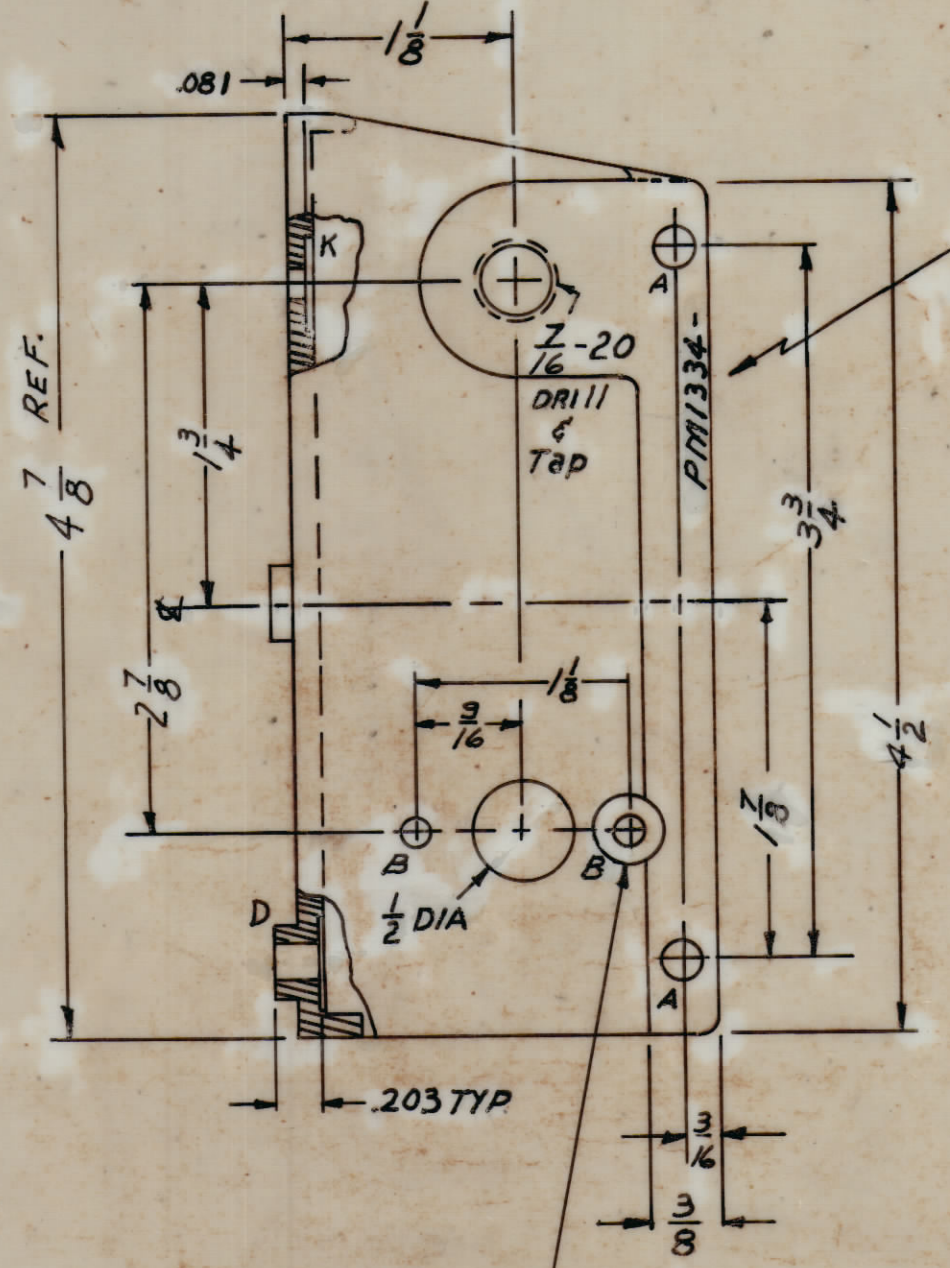
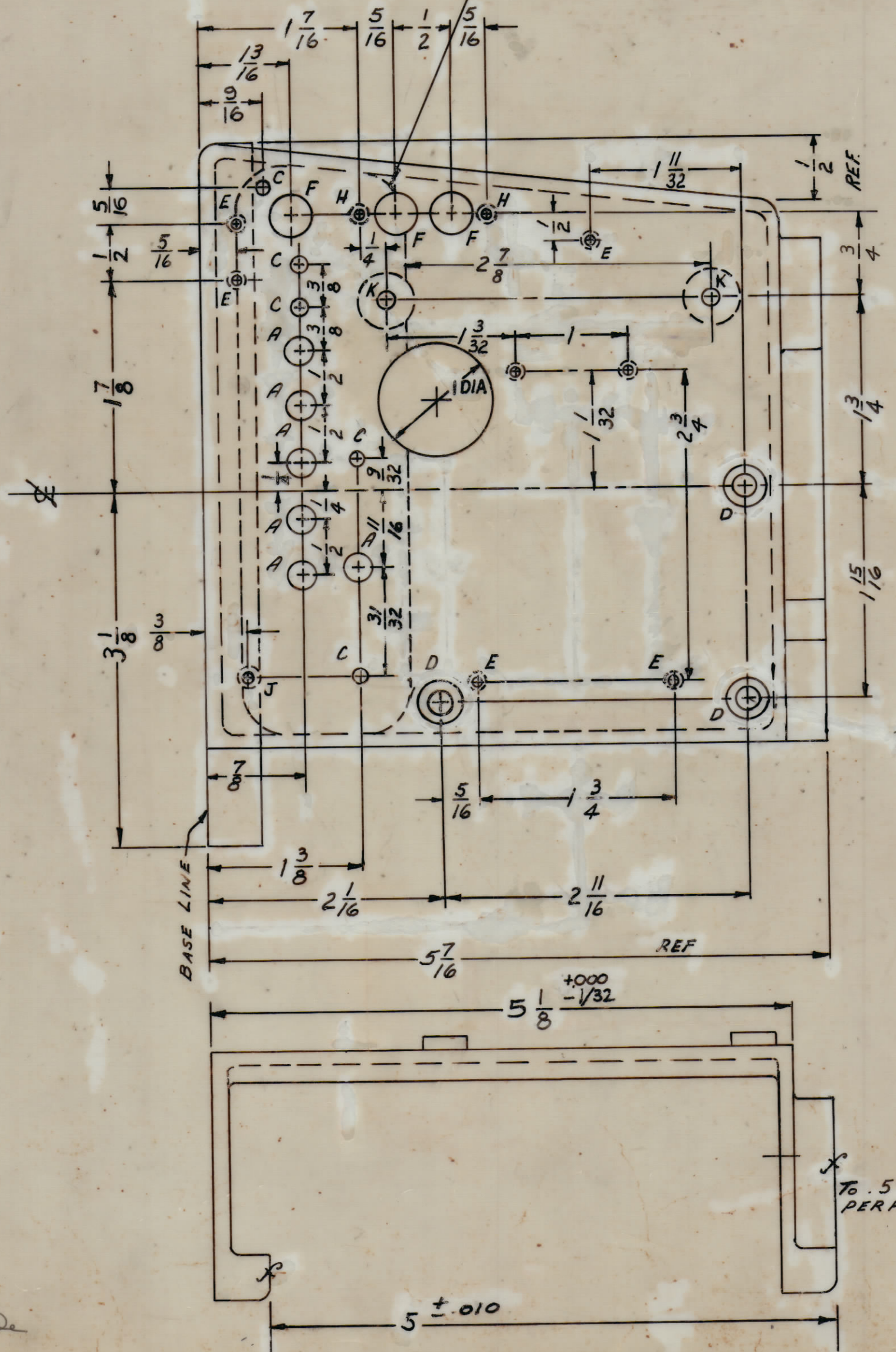
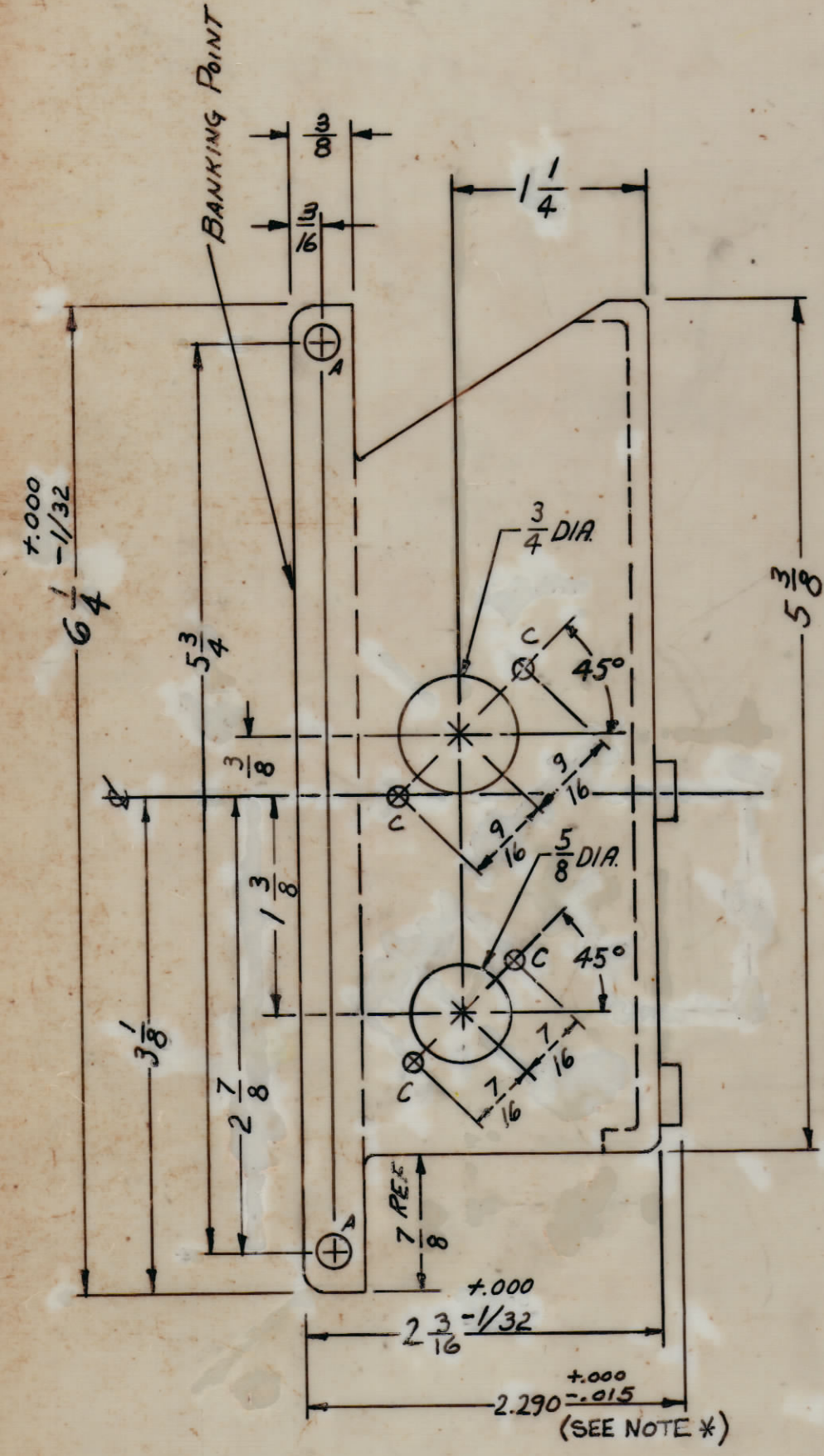
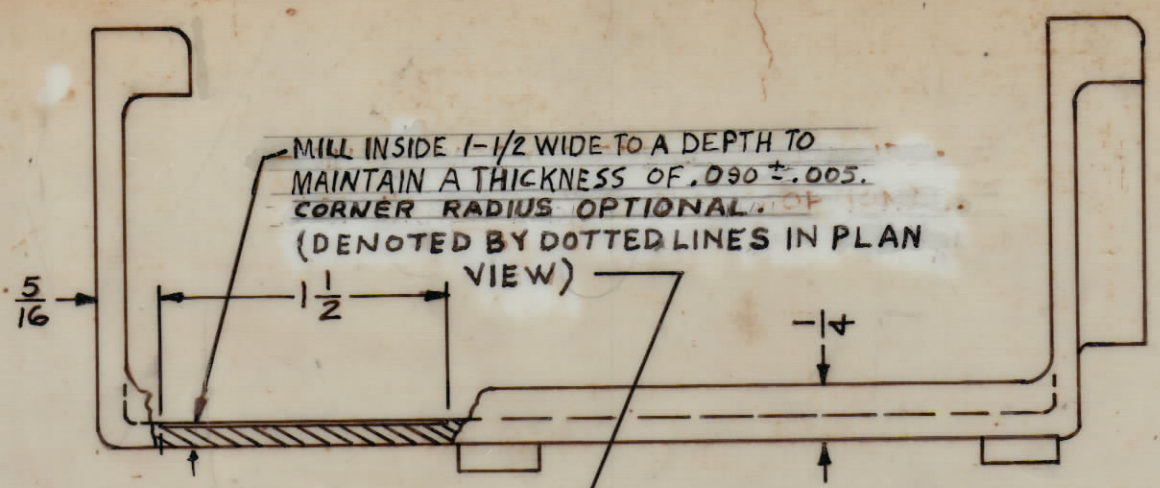


IF IT IS FOUND DESIRABLE TO CHANGE ANY TOLERANCE OR OTHER DETAIL SPECIFIED ON THIS DRAWING NOTIFY THE PURCHASER PROMPTLY.

MAXIMUM ALLOWABLE TOLERANCES HAVE BEEN DETERMINED AND DEVIATIONS WILL BE CAUSE FOR REJECTION. REMOVE ALL BURRS AND SHARP EDGES.

**\*NOTE:**  
THIS DIMENSION TO BE MAINTAINED ON EACH OF THE 3 BOSSES BY MACHINING THE TOP SURFACE ONLY



**HOLE LEGEND**

- A - 1/4 (.250) DIA HOLE - 10 REQ.
- B - 1/64 (.171) DIA. HOLE 2 REQ.
- C - 9/64 (.140) DIA. HOLE 9 REQ.
- D - 13/64 (.203) DIA. HOLE THRU, 3 REQ.  
C'BORE FROM BOTTOM TO THICKNESS OF .203 x 3/8 DIA.
- E - 6-32 - DRILL & TAP 7 REQ.
- F - 3/8 (.375) DIA. 3 REQ.
- H - DRILL & TAP 4-40 2 REQ.
- J - DRILL & TAP 8-32 1 REQ.
- K - 11/64 (.171) DIA. HOLE THRU & C'BORE FROM BOTTOM TO THICKNESS OF .081 x 1/2 DIA. 2-REQ.

MARK TMC PART NO. 1/8 HIGH, GOTHIC WITH LATEST REV. LETTER.

PM1334 A

THIS HOLE ONLY TO BE 11/32 DIA. C'BORE x .010 DEEP.

REF: TMC # CS-123  
TMC # LD-976

ISSUE	ITEM	CHANGED FROM	DATE	CN. NO.	DRAFTS	CHECKER	ENG. APP.
1	A	Ø HOLE 3/8 D. WAS 1/2 D. MILLING REV. 1/4 R DEL.	9-14-67	18485	H.G.		OP
2	Ø	ORIGINAL RELEASE FOR PRODUCTION	4-3-67	Ø	CV		

1	REQ PER UNIT	AO-100	MODEL	A1742	PROJECT NO.	ASS'Y. NO.	DATE
---	--------------	--------	-------	-------	-------------	------------	------

REQ. ITEM	PART NO.	DESCRIPTION	SYMBOL
THE TECHNICAL MATERIEL CORP. MAMARONECK, NEW YORK			
STOCK SIZE			
CHASSIS, OSCILLATOR			
MATERIAL WEIGHT PER PC. MACHINING			
TYPE & TEMPER LAK			
DRAWN		ELEC. DES. APP.	
CHECKED		MECH. DES. APP.	
HEAT TREAT. SPEC. S404 YEL. IRIDITE			
FINISH & SPEC. NO. PM1334 A			