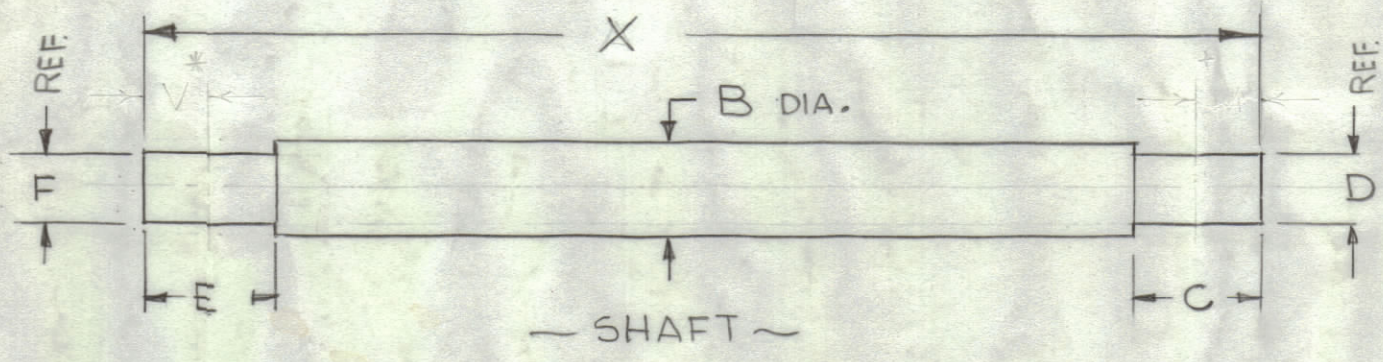


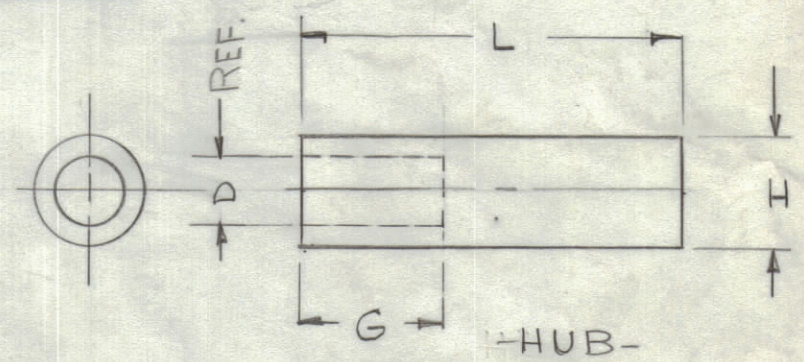
TMC PART NO.	DIMENSIONS								HUB STYLE		X	FIT	
	A	B	C	D	E	F	G	H	RIGHTSIDE	LEFT SIDE			
PM1326-1*	6-3/8	1/4	15/32	3/16	15/32	3/16	1/2	.2495 .2490	1	STYLE 1	STYLE 1	5-5/16	NONE
PM1326-2	5-7/8	1/4	15/32	3/16	15/32	3/16	1/2	.2495 .2490	1-7/16	STYLE 1	STYLE 1	3-15/16	NONE

REVISIONS						
ZONE	SYM	DESCRIPTION	DATE	E.M.N. NO.	DRAFT	CHKD
	X	EXP. RELEASE	8-23-66	X		
	X1	X DIM ADDED, X WAS A	10-12-66	X1		
	X2	PIN OPTIONAL ADDED	11-17-66			
	Ø	ORIGINAL RELEASE FOR PRODUCTION	11-18-66	Ø	RME	

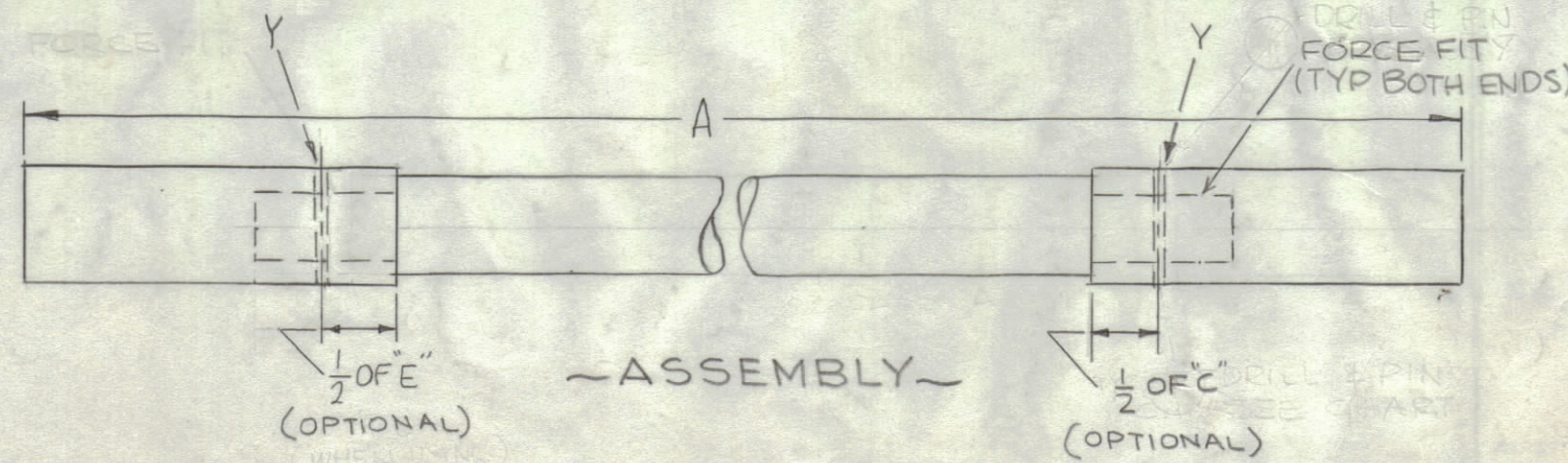


MATERIAL: GIL EPOXY

STYLE 1



MATERIAL: STAINLESS STEEL #303 - S104 PASSIVATED



WHEN ASSEMBLED, HUBS & SHAFT MUST BE CONCENTRIC TO C/L WITHIN .004

NOTES

IEA	TLAA-2.5K	BMA12B
QTY./UNIT	MODEL USED ON	ASS'Y. NO.
SCALE	CODE	
DO NOT SCALE		

THE CONTENTS OF THIS DRAWING ARE THE EXCLUSIVE PROPERTY OF THE TECHNICAL MATERIEL CORP. ITS UNAUTHORIZED USE OR REPRODUCTION IN WHOLE OR IN PART IS STRICTLY FORBIDDEN.

REQ'D.	ITEM	PART NUMBER	DESCRIPTION	SYMBOL
LIST OF MATERIAL				
MATERIAL		AS NOTED		
FINISH		AS NOTED		
		THE TECHNICAL MATERIEL CORP. DEGREGO MAMARONECK, NEW YORK		
		SHAFT,		
DRAWN	G.D.L.	DATE	8-18-66	FINAL APPROVAL
CHECKED	JCB	DATE		
ELECT. DES.	aa	DATE	11-17-66	
MECH. DES.		DATE	11-17-66	
		SHEET		REV. LTR.

PM1326