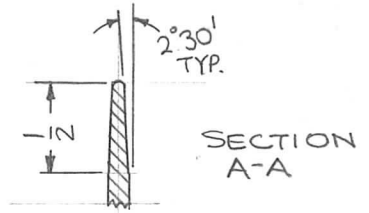
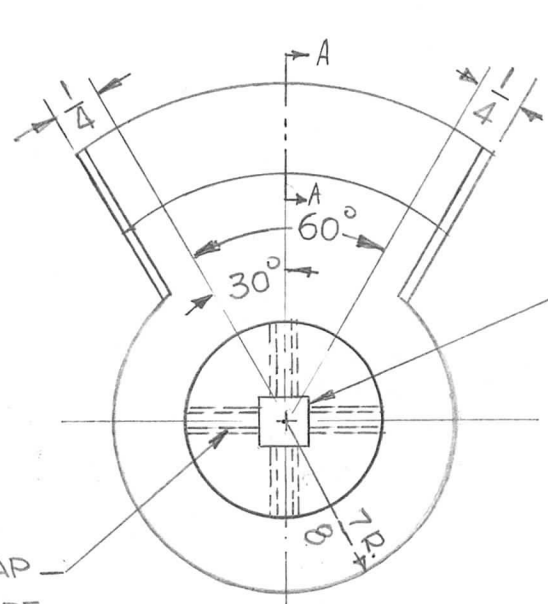
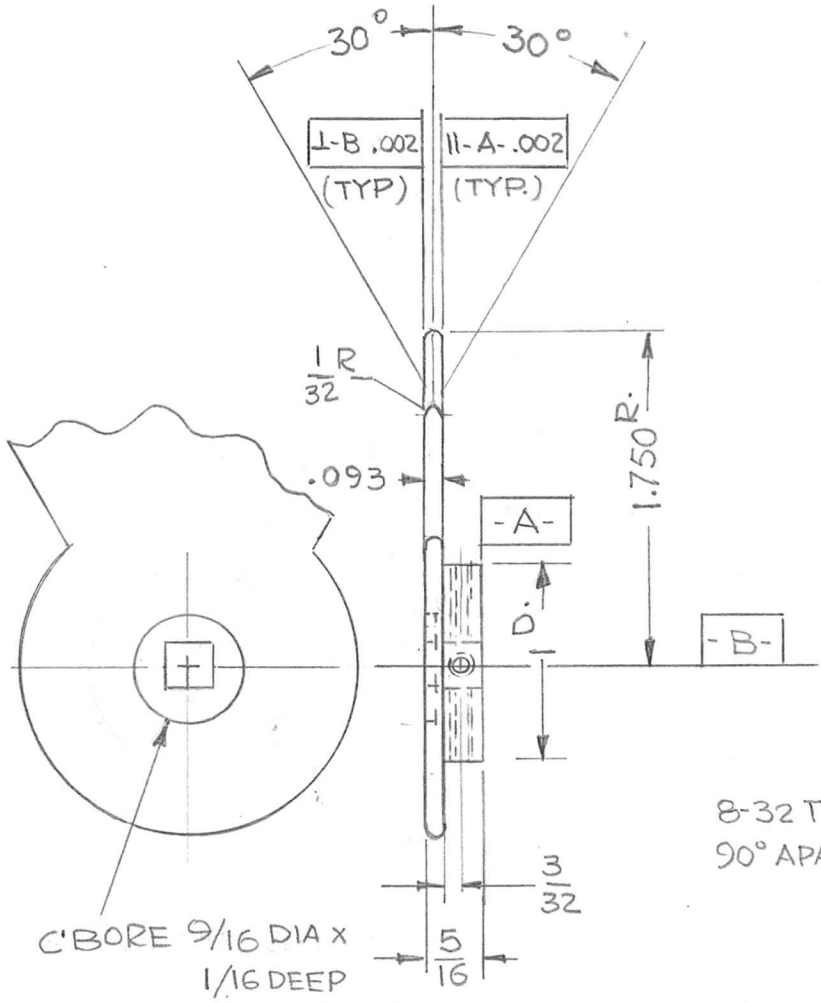


REQ. PER UNIT	USED ON			PM1320 \emptyset
	MODEL	ASS'Y. NO.	DATE	
1	TLAA-2.5K	AS128	8-9-66	



.250 SQ. BROACH
+0.001
-0.000

8-32 TAP
90° APART

NOTE
ROUND ALL EDGES 1/64R
ALL DIM APPLY AFTER
PLATING.

SYM	DESCRIPTION	DATE	CH. NO.	DRAFTS	CHECKER	ENG. APP.	REQ. ITEM	PART NO.	BUDETTI DESCRIPTION	SYMBOL		
\emptyset	ORIGINAL RELEASE FOR PRODUCTION	11/17/66	\emptyset	CV				AS NOTED	THE TECHNICAL MATERIEL CORP. MAMARONECK, NEW YORK	\emptyset		
X ₁	BEVEL ADDED	8-25-66	X ₁	<i>MB</i>		<i>oars</i>		STOCK SIZE				
X	EXP. RELEASE	8-9-66		G.D.L.				BRASS	ROTOR BANDSWITCH			
								MATERIAL	PI SECTION			
	UNLESS OTHERWISE SPECIFIED DIMENSIONS ARE IN INCHES AND INCLUDE CHEMICALLY APPLIED OR PLATED FINISHES	SCALE	1:1					HALF HARD	8-9-66 G.D.L.	<i>oars</i>	<i>MB</i>	
	DECIMALS .X ± .05 .XX ± .01 .XXX ± .005	FRACTIONS ± 1/64 ANGLES ± 0° 30'	TOLERANCES					TYPE & TEMPER S245 SILVER PLATE S423 SILVER KOTE	HEAT TREAT. SPEC.	DRAWN <i>oars</i>	CHECKED <i>MB</i>	FINAL APPROVAL <i>MB</i>
							FINISH & SPEC. NO.	ELEC. DES. APP.	MECH. DES. APP.	PM1320 \emptyset		