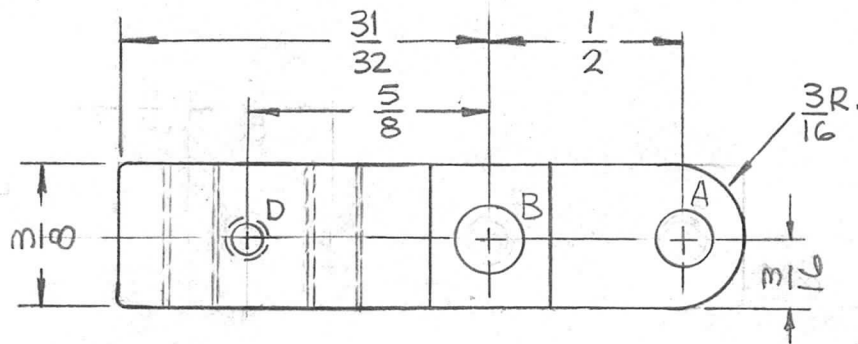
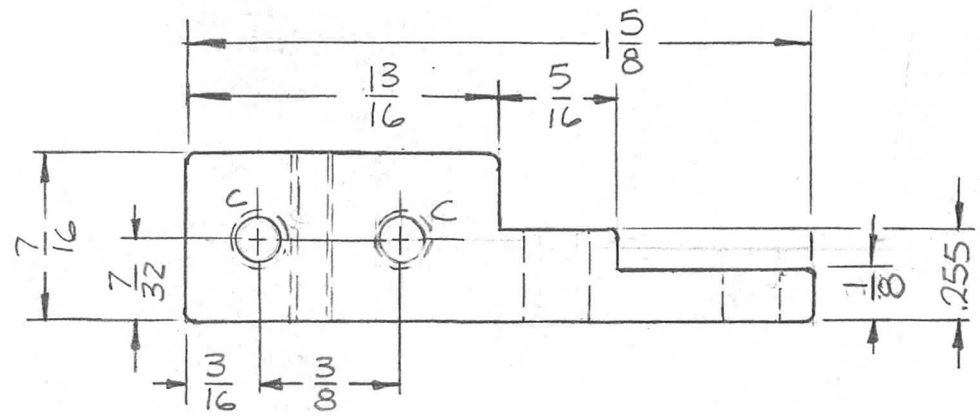


TMC P/N	D	REQ. PER UNIT	USED ON			PM-1319	B
PM-1319	DRILL & TAP FOR 6-32	2	MODEL	ASS'Y. NO.	DATE		
PM-1319-2	11/64 DIA.		TLAA-25K	AS128	8-4-66		



HOLES.
 A- 9/64 DIA. (1 REQ.)
 B- 11/64 DIA. (1 REQ.)
 C- DRILL & TAP FOR 8-32 (2 REQ.)
 D- SEE CHART (1 REQ.)



NOTE: ROUND ALL CORNERS & SHARP EDGES.

SYM	DESCRIPTION	DATE	CH. NO.	DRAFTS	CHECKER	ENG. APP.	REQ. ITEM	PART NO.	F. BUDETTI	DESCRIPTION	SYMBOL	
B	ADD P/N CHIT TO INC-2	9-8-70	19971	GE	FB/CW		AS NOTED			THE TECHNICAL MATERIEL CORP. MAMARONECK, NEW YORK	BASE, SWITCH CONTACT	
A	1/8 DIM WAS 3/16	1.24.68	18728	RME	FB		STOCK SIZE					
Ø	ORIGINAL RELEASE FOR PRODUCTION	11.18.66	Ø	RME			BRASS					
	UNLESS OTHERWISE SPECIFIED DIMENSIONS ARE IN INCHES AND INCLUDE CHEMICALLY APPLIED OR PLATED FINISHES	SCALE	2:1					1/2 HARD				
	DECIMALS .X ± .05 .XX ± .01 .XXX ± .005	FRACTIONS ± 1/64 ANGLES ± 0° 30'	CODE	A				TYPE & TEMPER S245 SILVER PLATE S423 SILVER KOTE	HEAT TREAT. SPEC.	DRAWN	CHECKED	FINAL APPROVAL
	TOLERANCES						FINISH & SPEC. NO.	ELEC. DES. APP.	MECH. DES. APP.		PM-1319 B	