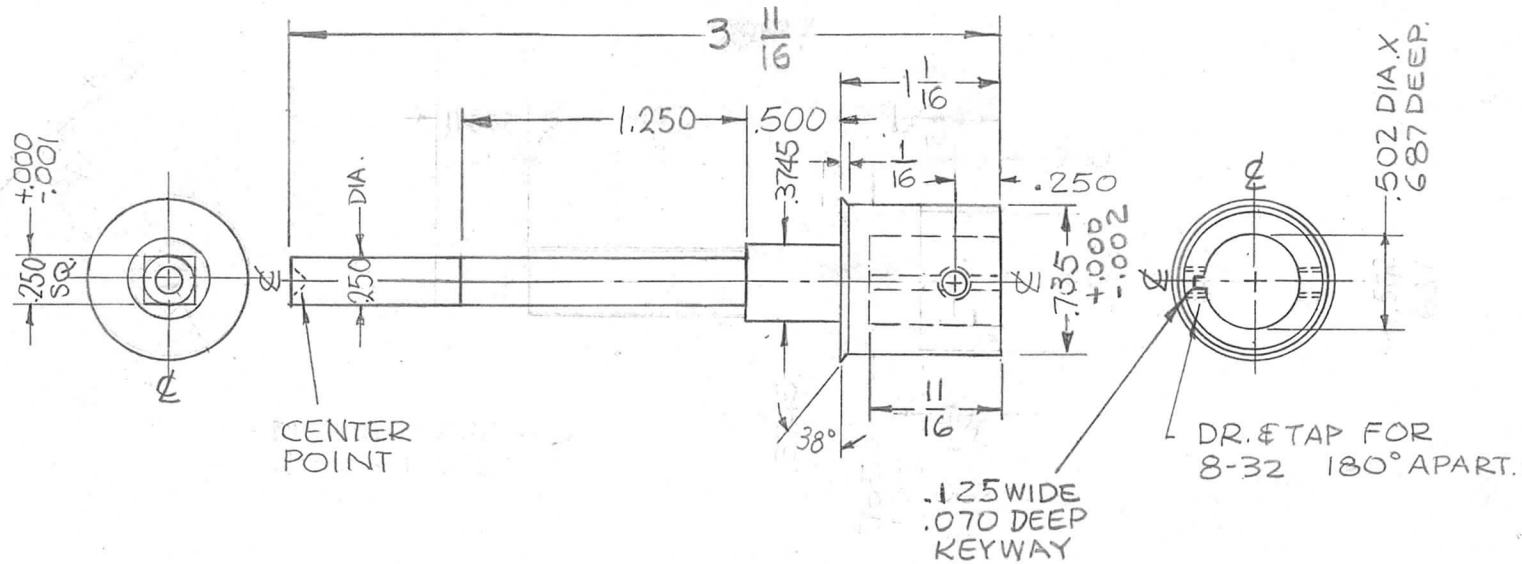


REQ. PER UNIT	USED ON			PM1317	Ø
	MODEL	ASS'Y. NO.	DATE		
1	TLAA-2.5K	AS128	7-13-66		



NOTE
REMOVE ALL ROUGH EDGES.

MATES WITH PM1275

REQ. ITEM	PART NO.	F. BUDETTI	DESCRIPTION	SYMBOL
			THE TECHNICAL MATERIEL CORP. MAMARONECK, NEW YORK	
	STOCK SIZE		HUB, BANDSWITCH	
Ø	ORIGINAL RELEASE FOR PRODUCTION	11.18.66	Ø RME	
SYM	DESCRIPTION	DATE	CH. NO.	DRAFTS
	UNLESS OTHERWISE SPECIFIED DIMENSIONS ARE IN INCHES AND INCLUDE CHEMICALLY APPLIED OR PLATED FINISHES	SCALE	DO NOT SCALE	
DECIMALS .X ± .05 .XX ± .01 .XXX ± .005	TOLERANCES	FRACTIONS ± 1/64 ANGLES ± 0° 30'	CODE A	
	TYPE & TEMPER S245 SILVER PLATE S243 SILVER KOTE	HEAT TREAT. SPEC.	DRAWN	CHECKED
	FINISH & SPEC. NO.	ELEC. DES. APP.	MECH. DES. APP.	PM1317 Ø