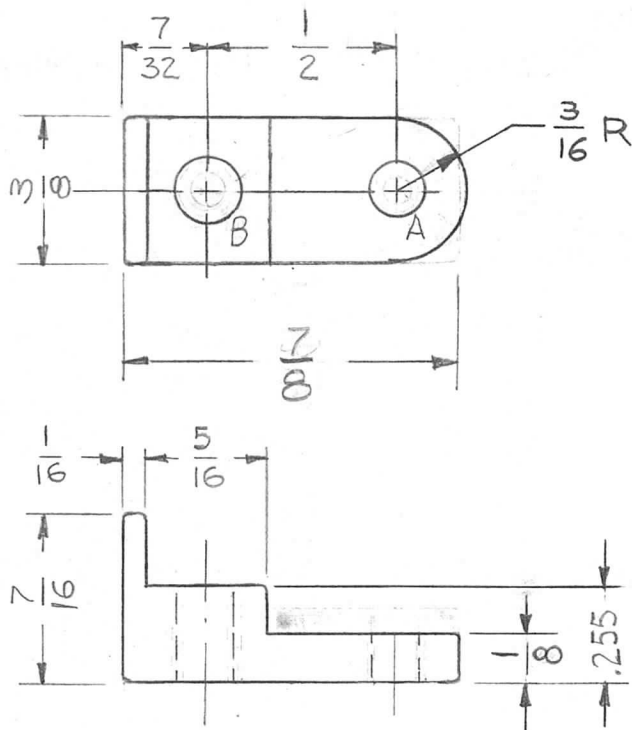


TMC P/N	A
PM1309-1	9/64 Dia
PM1309-2	8-32 DR & TAP

REQ. PER UNIT	USED ON			PM 1309 B
	MODEL	ASS'Y. NO.	DATE	
19	TLAA-2.5K	A SIZE	6-9-66	



HOLES:

A ~ SEE CHART  
 B ~ 11/64 DIA. (1 REQ.)

NOTE:  
 ROUND ALL CORNERS &  
 SHARP EDGES

B	ADDED CHART	10/23/69	19608	KD	<i>for F.B. M</i>
A	1/8 WAS 3/16	7-11-67	18350	LAK	<i>Jde</i>
Ø	ORIGINAL RELEASE FOR PRODUCTION	11/17/66	Ø	CV	<i>of</i>
XI	HOLES WERE 6-32 TAP	8-23-66	XI	<i>MH</i>	<i>OCB</i>
X	EXPERIMENTAL RELEASE	6-16-66	-#	Jc	<i>OCB</i>
SYM	DESCRIPTION	DATE	CH. NO.	DRAFTS	CHECKER
UNLESS OTHERWISE SPECIFIED DIMENSIONS ARE IN INCHES AND INCLUDE CHEMICALLY APPLIED OR PLATED FINISHES		SCALE 2:1			
DECIMALS .X ± .05 .XX ± .01 .XXX ± .005	TOLERANCES	FRACTIONS ± 1/64 ANGLES ± 0° 30'	CODE A		

REQ. ITEM	PART NO.	BUDETTI	DESCRIPTION	SYMBOL
	AS NOTED	THE TECHNICAL MATERIEL CORP. MAMARONECK, NEW YORK		
	STOCK SIZE	BASE, SWITCH CONTACT		
	BRASS			
	MATERIAL			
	1/2 HARD	6-9-66 G.D.L.	<i>OCB</i>	<i>OCB</i>
	TYPE & TEMPER	HEAT TREAT. SPEC.	DRAWN	CHECKED
	S245 SILVER PLATE		<i>OCB</i>	<i>OCB</i>
	S423 IRIDITE 18-P SILVER-KOTE			
	FINISH & SPEC. NO.	ELEC. DES. APP.	MECH. DES. APP.	PM 1309 B