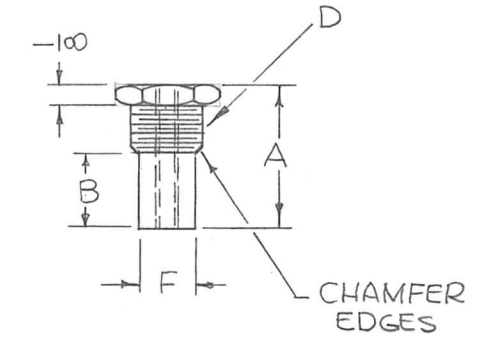
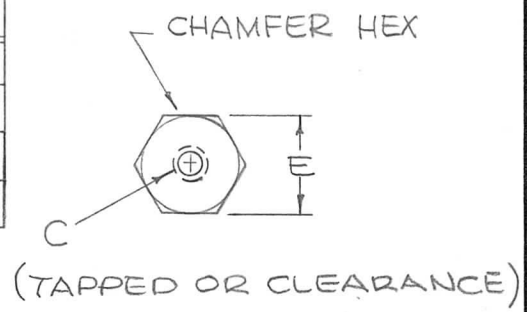


REQ. PER UNIT	USED ON			PM1299 B
	MODEL	ASS'Y. NO.	DATE	
	STANDARD		5-19-66	

TMC P/N	A	B	C	D	E	F	MATERIAL	FINISH
PM1299-1	3/4	3/8	6-32	3/8-32	3/8	5/16	2011-T3 ALUM	S245 SILVER PL. 3423 SILVER KOTE
PM1299-2	5/8	1/4	6-32	3/8-32	3/8	5/16	2011-T3 ALUM	"
PM1299-3	3/4	—	8-32	3/8-32	1/2	—	2011-T3 ALUM	"
PM129-4	3/8	—	.120	3/8-32	3/8	—	2011-T3 ALUM	"



SYM	DESCRIPTION	DATE	CH. NO.	DRAFTS	CHECKER	ENG. APP.	REQ. ITEM	PART NO.	F. BUDETTI DESCRIPTION	SYMBOL	
B	PM129-4 E" TAPPED OR CLEAR. ADD. -3"F 5/16 DELE.	12.14.66	17268	WHD	JCB				<b>THE TECHNICAL MATERIEL CORP.</b> MAMARONECK. NEW YORK  CONTACT, ELECTRICAL		
A	PM1299-3 3/4" DIA DELE (5/16)	11.18.66	17268	WHD	JCB						
Ø	ORIGINAL RELEASE FOR PRODUCTION	7.11.66	A	WHD							
UNLESS OTHERWISE SPECIFIED DIMENSIONS ARE IN INCHES AND INCLUDE CHEMICALLY APPLIED OR PLATED FINISHES		SCALE									
DECIMALS .X ± .05 .XX ± .01 .XXX ± .005	TOLERANCES	FRACTIONS ± 1/64 ANGLES ± 0° 30'	CODE A	STANDARD			TYPE & TEMPER	HEAT TREAT. SPEC.	DRAWN 7-11-66	CHECKED JCB	FINAL APPROVAL 02.03 [Signature]
							FINISH & SPEC. NO.	ELEC. DES. APP.	MECH. DES. APP.	PM1299 B	