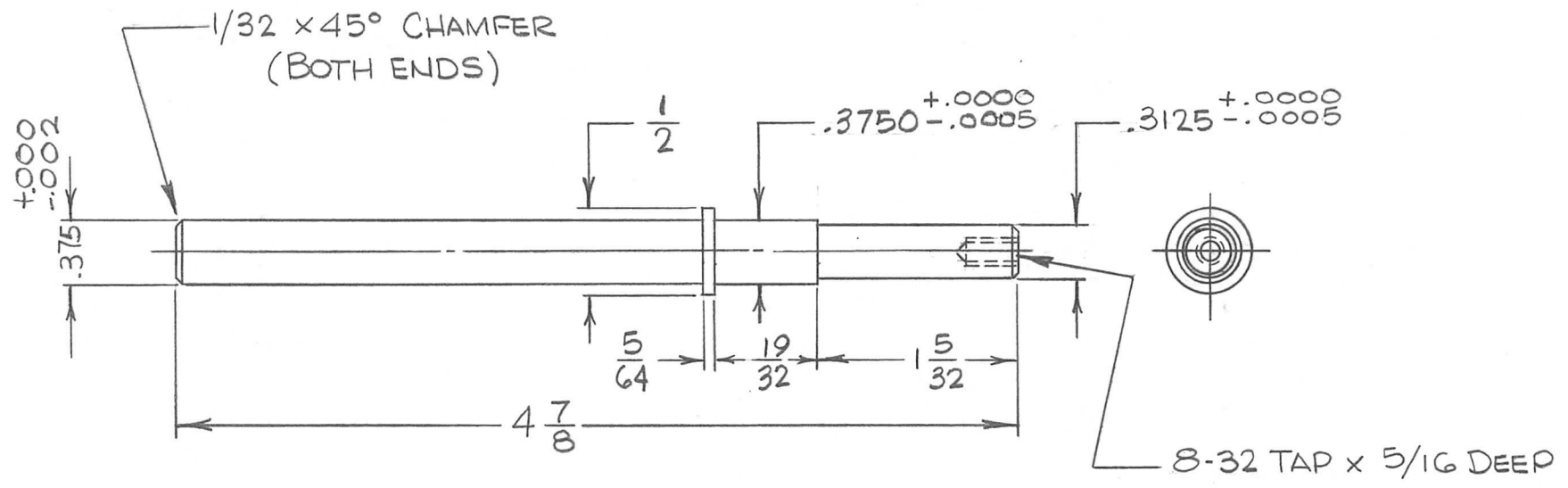


REQ. PER UNIT	USED ON			PM1292 Ø
	MODEL	ASS'Y. NO.	DATE	
	GPT-10KLF	A 4095	11-15-65	



REQ. ITEM	PART NO.	BUDETTI	DESCRIPTION	SYMBOL					
			THE TECHNICAL MATERIEL CORP. MAMARONECK, NEW YORK						
Ø	ORIGINAL RELEASE FOR PRODUCTION	2-2-66	Ø						
XI	TOL. REVERSED ON .3750 & .3125	2-1-66	AT Jc						
SYM	DESCRIPTION	DATE	CH. NO.	DRAFTS	CHECKER	ENG. APP.			
UNLESS OTHERWISE SPECIFIED DIMENSIONS ARE IN INCHES AND INCLUDE CHEMICALLY APPLIED OR PLATED FINISHES		SCALE		1:1					
DECIMALS .X ± .05 .XX ± .01 .XXX ± .005	TOLERANCES	FRACTIONS ± 1/64 ANGLES ± 0° 30'	CODE						
# 303		H. AUSTIN	QC/S						
TYPE & TEMPER	HEAT TREAT. SPEC.	DRAWN	CHECKED	FINAL APPROVAL					
S104 PASSIVATE				PM1292 Ø					
FINISH & SPEC. NO.		ELEC. DES. APP.	MECH. DES. APP.						