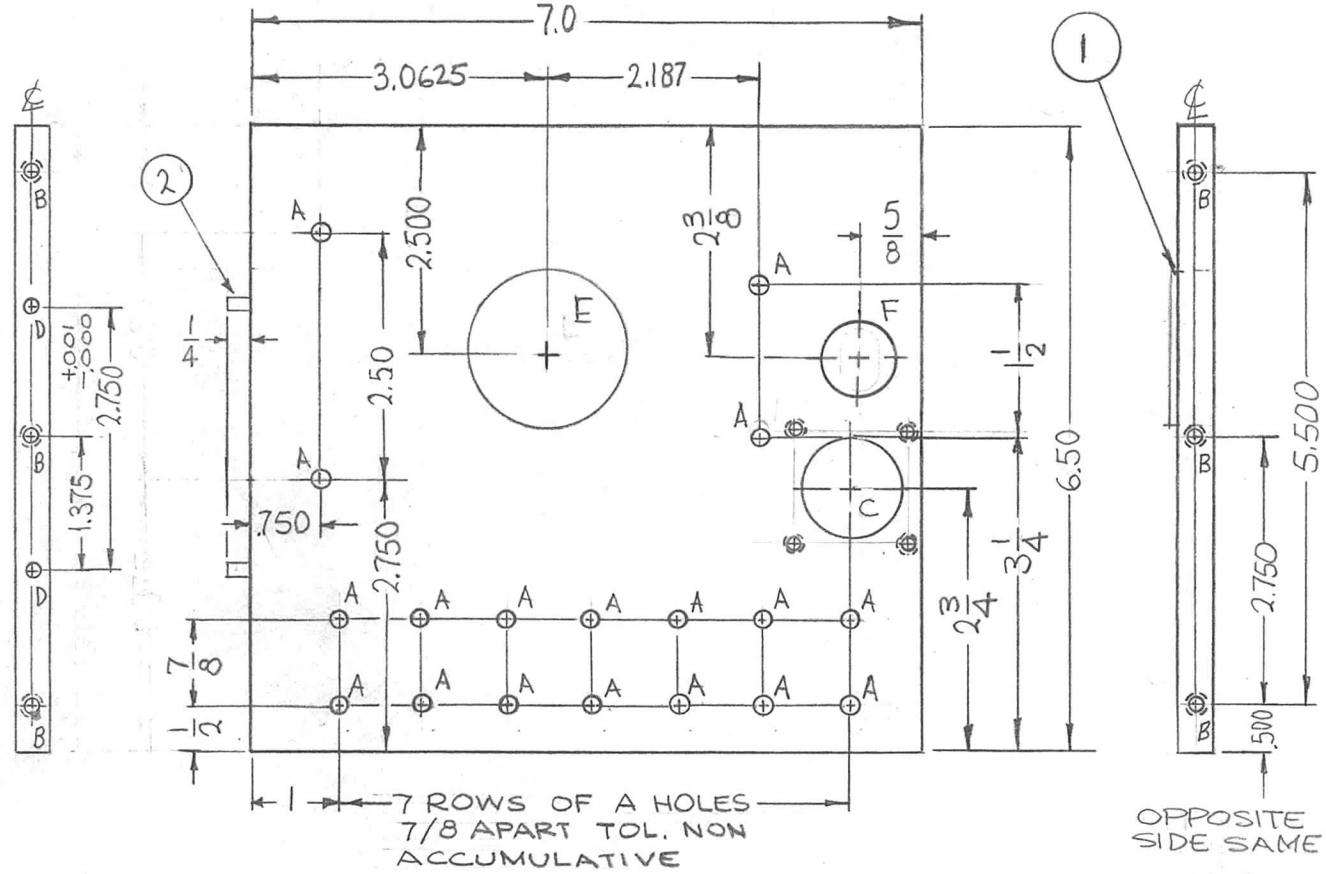
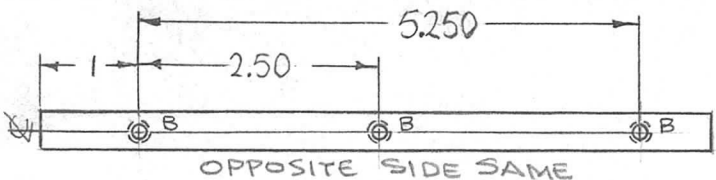
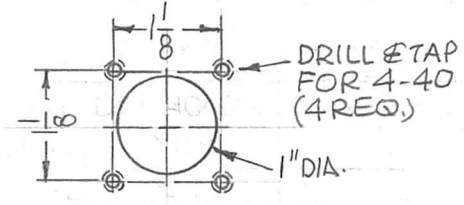


REQ. PER UNIT	USED ON			PM1273	Ø
	MODEL	ASS'Y. NO.	DATE		
1	TST-10K		6-24-65		



HOLE	DESCRIPTION	REQ.
A	11/64 DIA.	18
B	DRILL & TAP FOR 6-32 X 1/4 DP	12
C	SEE DETAIL	1
D	.124 ±.000 DIA. X 1/4 DP.	2
E	PRESS FIT ITEM 1	1
F	3/4 DIA.	1



C-DETAIL

OPPOSITE SIDE SAME (FOR "B" LOCATIONS)

2	2	PN116-A-4-S	PIN, DOWEL	D
1	1	BB 120-4	BEARING., BALL ANNL	E
REQ. ITEM		PART NO.	F. BUDETTI DESCRIPTION	SYMBOL

Ø	ORIGINAL RELEASE FOR PRODUCTION	3-3-66	MA	Jc	JCB	OC
X3	DWG WAS -1-2, F, C MODIFIED E & 4 TOP A HOLES DROPPED 1/8	8-1-65	X3			
X2	SLOT ADDED TO PM1273-1	7-20-65	X2			
X1	ITEM 1 & "E" HOLE ADDED	7-13-65	X1	G.D.L.		
SYM	DESCRIPTION	DATE	CH. NO.	DRAFTS	CHECKER	ENG. APP.
UNLESS OTHERWISE SPECIFIED DIMENSIONS ARE IN INCHES AND INCLUDE CHEMICALLY APPLIED OR PLATED FINISHES		SCALE 1/2:1				
DECIMALS .X ± .05 .XX ± .01 .XXX ± .005	TOLERANCES	FRACTIONS ± 1/64 ANGLES ± 0° 30'	CODE A			

1/4 THICK		THE TECHNICAL MATERIEL CORP. MAMARONECK, NEW YORK			
STOCK SIZE		PLATE, MTG. CAPACITORS			
ALUMINUM		MATERIAL			
2024-T4		JCB	JCB	MM	
TYPE & TEMPER	HEAT TREAT. SPEC.	DRAWN	CHECKED	FINAL APPROVAL	
S404 YEL IRIDITE				PM1273 Ø	
FINISH & SPEC. NO.		ELEC. DES. APP.	MECH. DES. APP.		