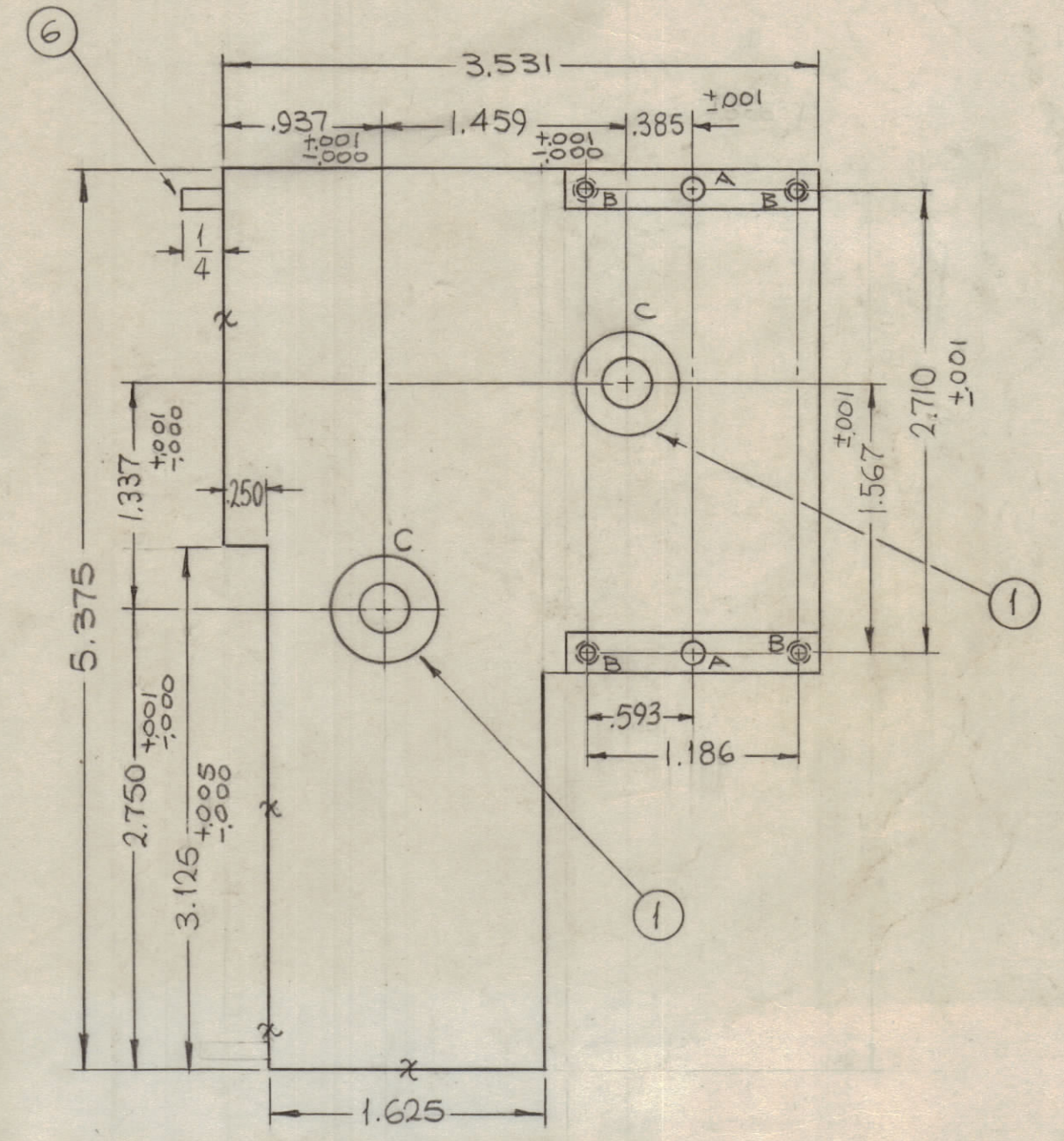
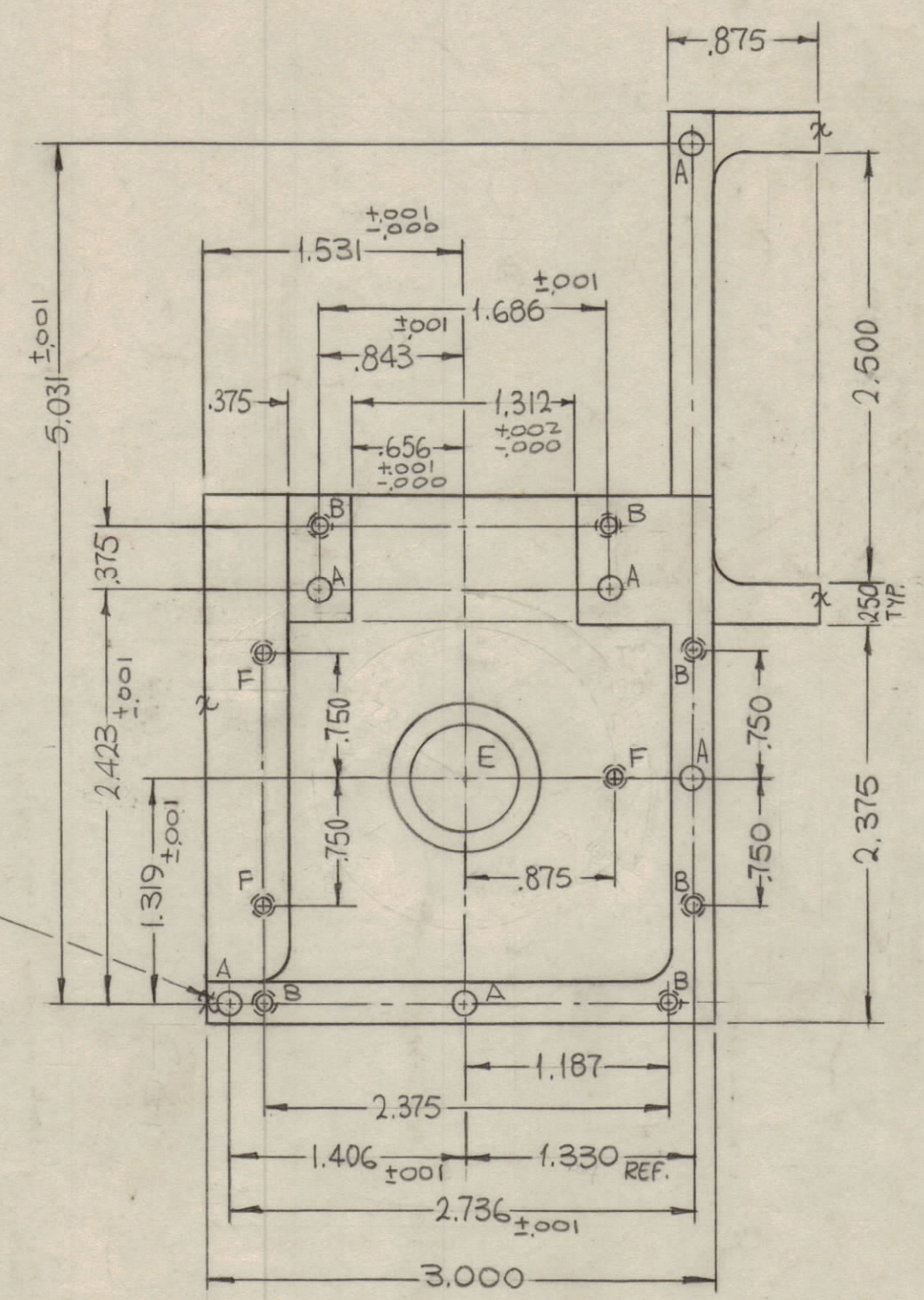
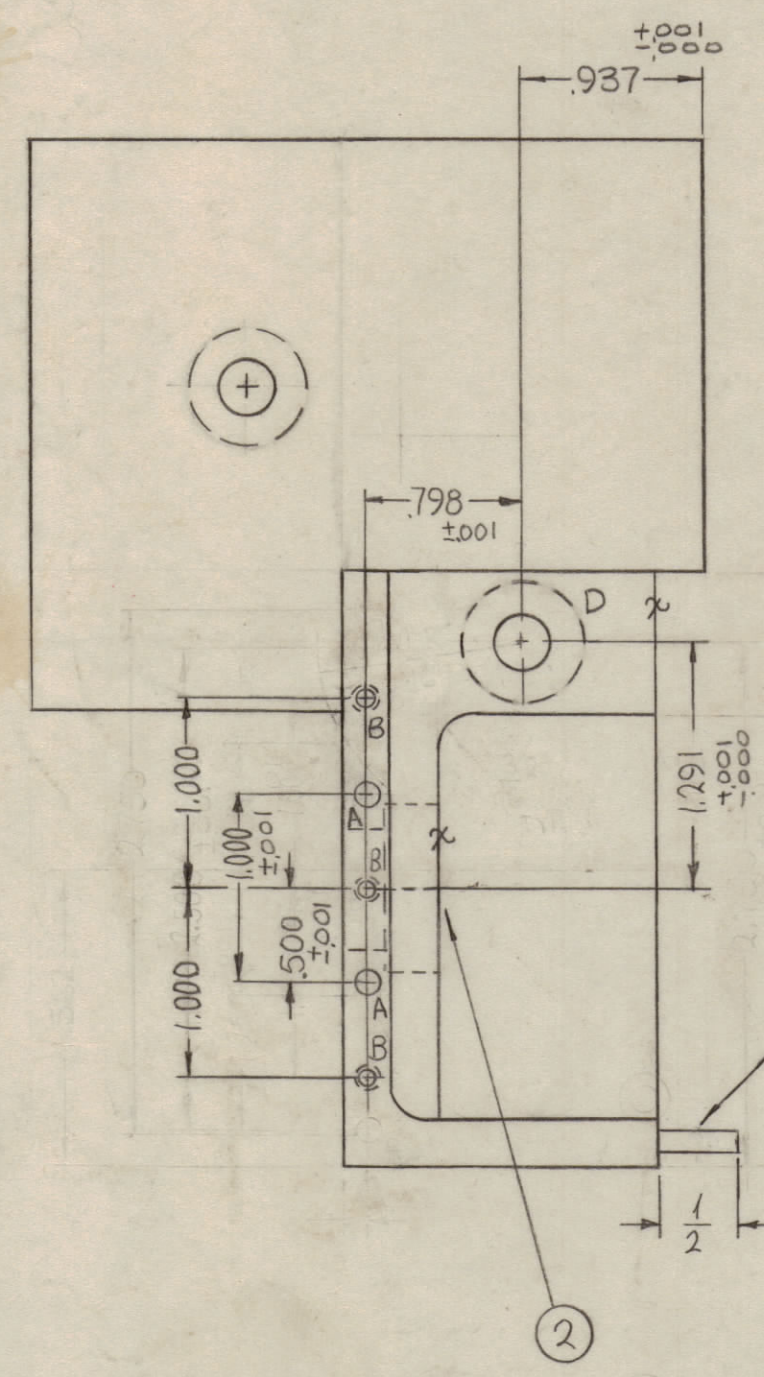
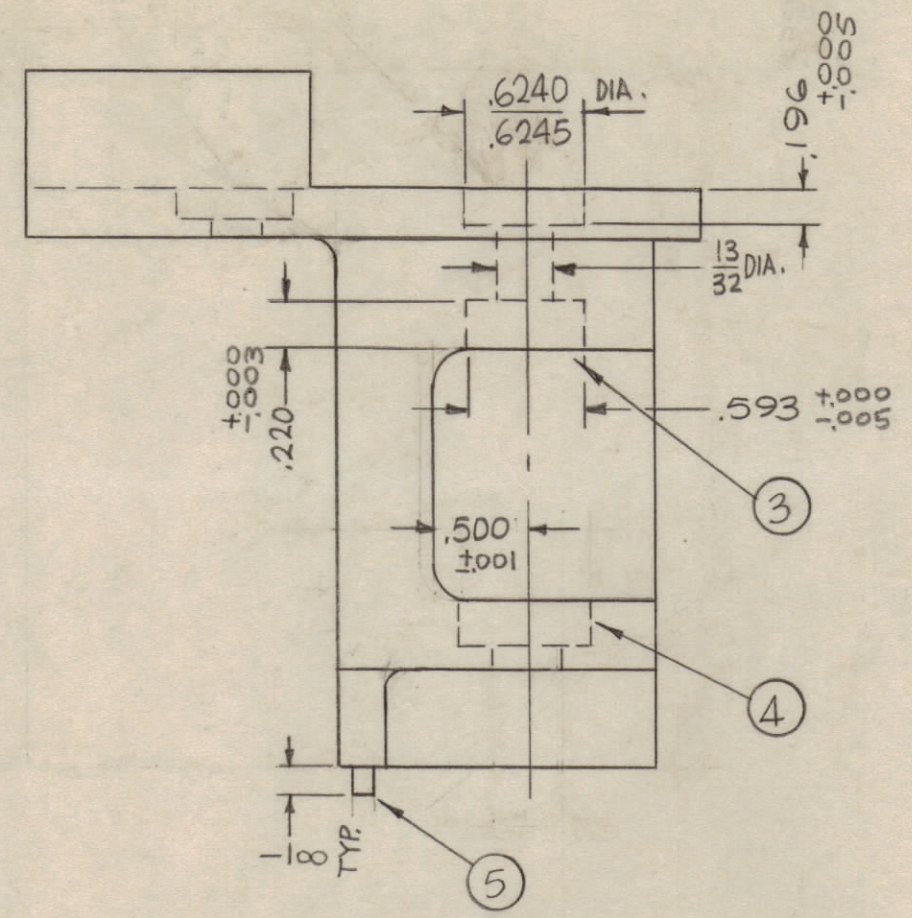


REVISIONS							
ZONE	SYM	DESCRIPTION	DATE	E.M.N. NO.	DRAFT	CHKD	APPD
	X1	F HOLES WERE B HOLES	7-29-65	X1	MLA		
	Ø	ORIGINAL RELEASE FOR PRODUCTION	3-14-66	Ø	MLA		jl



HOLES	DESCRIPTION	REQ
A	.1247-.1250 DIA X 3/16 DP.	10
B	DRILL & TAP FOR 4-40 X 3/8 DP.	13
C	DRILL 13/32 DIA. C'BORE .6240-.6245 DIA. X .196 ±.0005 DP.	2
D	DRILL 11/32 DIA. C'BORE .656 ±.0005 DIA. X .252 ±.0003 DP.	1
E	DRILL .625 DIA. C'BORE .8740-.8745 DIA. X .281 ±.0005 DP.	1
F	DRILL & TAP FOR 4-40 THRU	3

REF: CS132

REQ'D.	ITEM	PART NUMBER	DESCRIPTION	SYMBOL
1	7	PN116-A-65	PIN, DOWEL	A
1	6	PN116-A-45	PIN, DOWEL	A
8	5	PN116-A-35	PIN, DOWEL	A
1	4	BB129-14	BEARING, RACE	D
1	3	BB129-13	BEARING, RACE	E
1	2	BB120-2	BEARING, BALL	E
2	1	BB120-1	BEARING, BALL	C

F. BUDETTI LIST OF MATERIAL			
MATERIAL SEE CASTING		THE TECHNICAL MATERIEL CORP. MAMARONECK, NEW YORK	
FINISH S404 YELLOW IRIDITE		TITLE MACHINING, GEAR BOX, BANDSWITCH	
DRAWN SRC	DATE 5-13-65	FINAL APPROVAL [Signature]	DATE 3/1/66
CHECKED [Signature]	DATE 3-9-66	PM1264	
ELECT. DES.	DATE	REV. LTR.	
MECH. DES. [Signature]	DATE 3/1/66	SHEET	

QTY./UNIT	MODEL USED ON	ASS'Y. NO.
1	TST ( ) 10K	A4286
SCALE 1:1	CODE A	

THE CONTENTS OF THIS DRAWING ARE THE EXCLUSIVE PROPERTY OF THE TECHNICAL MATERIEL CORP. ITS UNAUTHORIZED USE OR REPRODUCTION IN WHOLE OR IN PART IS STRICTLY FORBIDDEN.

NOTES