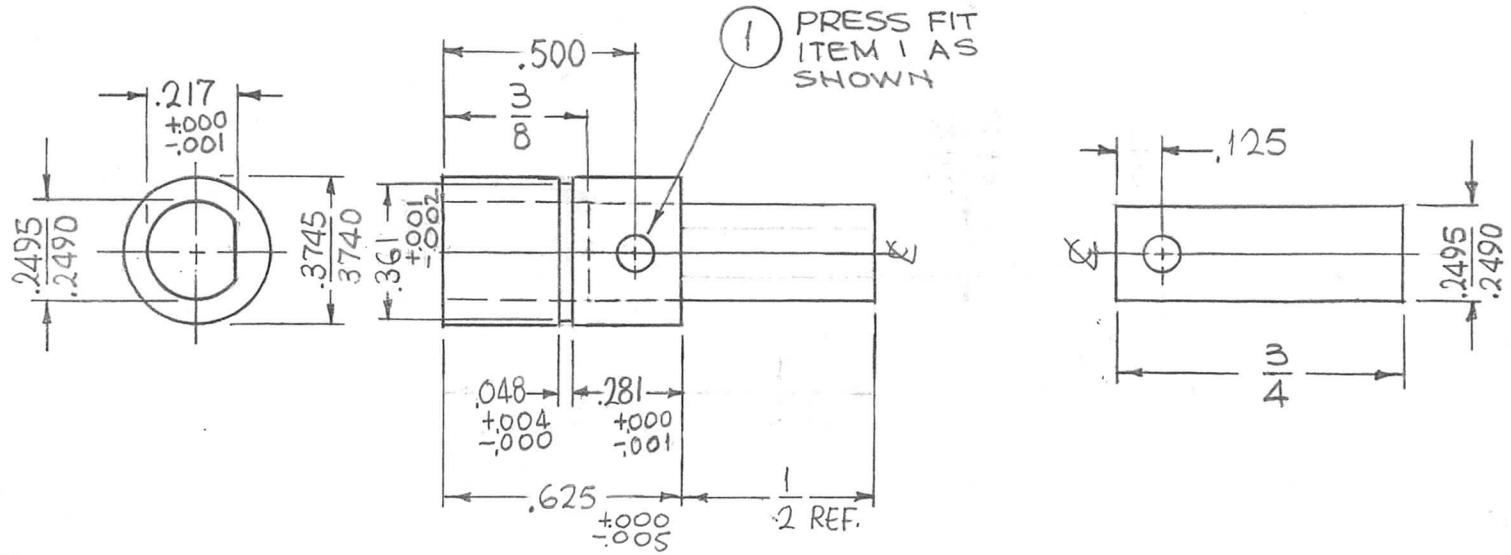


REQ. PER UNIT	USED ON			PM1256 \emptyset
	MODEL	ASS'Y. NO.	DATE	
2	TSTE-10K		4-27-65	



						1	1	PN 116-M-2-S	PIN, DOWEL		
						REQ. ITEM		PART NO.	F. BUDETTI DESCRIPTION	SYMBOL	
\emptyset	ORIGINAL RELEASE FOR PRODUCTION	3-3-66	AA	Jc	JCB anc	AS NOTED		THE TECHNICAL MATERIEL CORP. MAMARONECK, NEW YORK			
X ₂	.625 WAS 5/8, .281 WAS $\pm .001$	10-21-65	X ₂	APY	PC.	STOCK SIZE		SHAFT, CAP. DRIVE			
X ₁	.125 WAS .250, GROOVE ADDED	8-9-65	X ₁	APY		MATERIAL					
SYM	DESCRIPTION	DATE	CH. NO.	DRAFTS	CHECKER	ENG. APP.	#303	SRG	JCB	APY	
UNLESS OTHERWISE SPECIFIED DIMENSIONS ARE IN INCHES AND INCLUDE CHEMICALLY APPLIED OR PLATED FINISHES		SCALE		2:1		TYPE & TEMPER		HEAT TREAT. SPEC.	DRAWN	CHECKED	FINAL APPROVAL
DECIMALS	TOLERANCES	FRACTIONS	CODE			S104 PASSIVATE		ELEC. DES. APP.		MECH. DES. APP.	PM1256 \emptyset
.X \pm .05		\pm 1/64	A			FINISH & SPEC. NO.					
.XX \pm .01		ANGLES									
.XXX \pm .005		\pm 0° 30'									