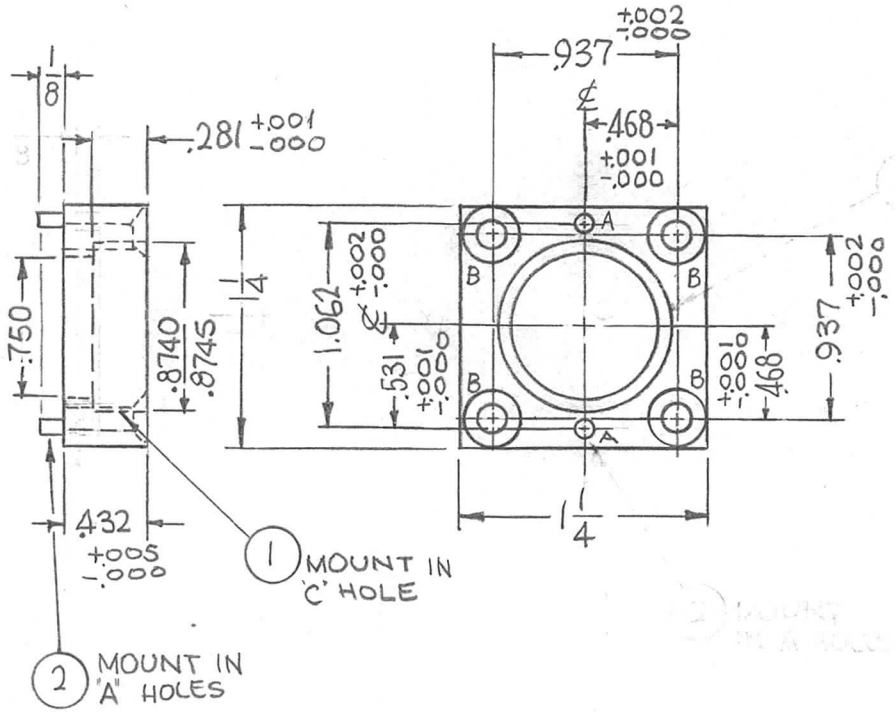


REQ. PER UNIT	USED ON		
	MODEL	ASS'Y. NO.	DATE
1	TSTE-10K		4-6-65

PM1237  $\emptyset$



HOLES	DESCRIPTION	REQ.
A	.092 DIA. $\pm .001$	2
B	DR. 14.4 DIA. C'SINK 82° X .284 DIA.	4

2	2	PN116-N-3-S	PIN, DOWEL	A
1	1	BB120-2	BEARING RACE	C
REQ. ITEM	PART NO.		F. BUDETTI DESCRIPTION	SYMBOL
SEE DWG			THE TECHNICAL MATERIEL CORP. MAMARONECK. NEW YORK	
STOCK SIZE			PLATE, BEARING	
ALUMINUM				
MATERIAL				
2024-T4			SRG	<i>[Signature]</i>
TYPE & TEMPER	HEAT TREAT. SPEC.	DRAWN	CHECKED	FINAL APPROVAL
S404 YEL. IRIDITE		aa	<i>[Signature]</i>	PM1237 $\emptyset$
FINISH & SPEC. NO.		ELEC. DES. APP.	MECH. DES. APP.	

$\emptyset$	ORIGINAL RELEASE FOR PRODUCTION	4/26/67	$\emptyset$	CV	<i>[Signature]</i>	
X2	.281 DIM WAS $\pm .005$	10-21-65	X2	<i>[Signature]</i>	<i>[Signature]</i>	
X1	THICKNESS WAS 1/4, 750 $\pm$ .281 DIM. ADDED	4-26-65	X1	SRG		
SYM	DESCRIPTION	DATE	CH. NO.	DRAFTS	CHECKER	ENG. APP.
UNLESS OTHERWISE SPECIFIED DIMENSIONS ARE IN INCHES AND INCLUDE CHEMICALLY APPLIED OR PLATED FINISHES		SCALE 1:1				
DECIMALS .X $\pm$ .05 .XX $\pm$ .01 .XXX $\pm$ .005	TOLERANCES	FRACTIONS $\pm$ 1/64 ANGLES $\pm$ 0° 30'	CODE A			