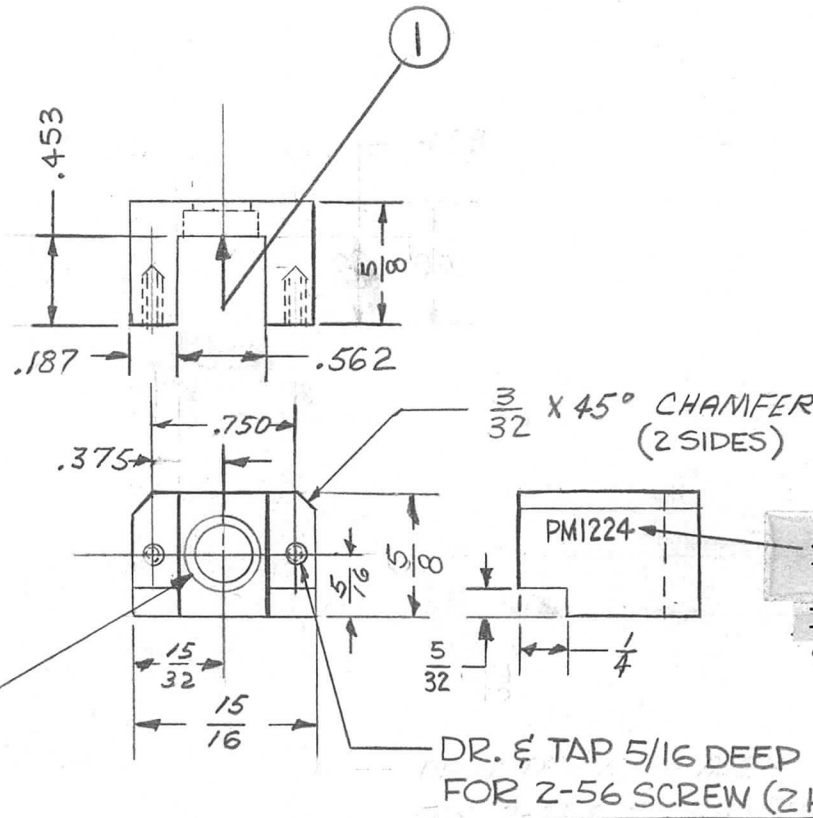


REQ. PER UNIT	USED ON			PM1224	A
	MODEL	ASS'Y. NO.	DATE		
1	AFCR-3	A5008	3-24-65		



.281 DR. THRU  
 & C'BORE .3746-.3749  
 x .125 DEEP.

DR. & TAP 5/16 DEEP  
 FOR Z-56 SCREW (2 HOLES)

METAL STAMP TMC PART NO.  
 1/8 HIGH GOTHIC.  
 WITH LATEST REVISION LETTER.

							1	1	BB126-10	RACE, BEARING		
							REQ. ITEM	PART NO.		DESCRIPTION	SYMBOL	
A	IT. ① ADDED		5-17-65	14092	CL	JL	THE TECHNICAL MATERIEL CORP. MAMARONECK, NEW YORK YOKE, ALUMINUM					
Ø	ORIGINAL RELEASE FOR PRODUCTION		3-26-65	Ø	2Z							
X	EXP. RELEASE		3-23-65	1	CL							
SYM	DESCRIPTION		DATE	CH. NO.	DRAFTS	CHECKER	ENG. APP.					
UNLESS OTHERWISE SPECIFIED DIMENSIONS ARE IN INCHES AND INCLUDE CHEMICALLY APPLIED OR PLATED FINISHES			SCALE				2024-73					
DECIMALS .X ± .05 .XX ± .01 .XXX ± .005			TOLERANCES		FRACTIONS ± 1/64 ANGLES ± 0° 30'		CODE	5404 YEL. IRIDITE		C. LANZA	<i>[Signature]</i>	<i>[Signature]</i>
							TYPE & TEMPER	HEAT TREAT. SPEC.	DRAWN	CHECKED	FINAL APPROVAL	
							FINISH & SPEC. NO.		ELEC. DES. APP.	MECH. DES. APP.	PM1224 A	