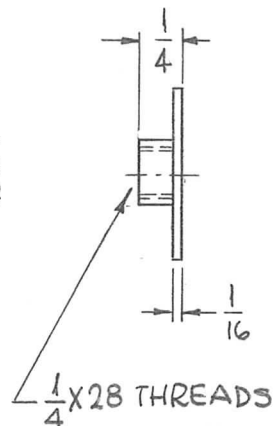
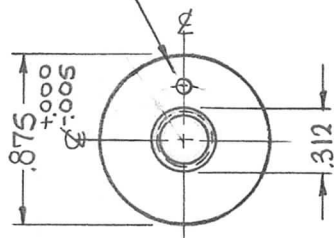


REQ. PER UNIT	USED ON			PM1219	Ø
	MODEL	ASS'Y. NO.	DATE		
1	RFTA-1		3-10-65		

1/16 DIA. HOLE
ON .250 $\pm .001$



REQ. ITEM	PART NO.	F. BUDETTI DESCRIPTION				SYMBOL
Ø	AS NOTED	THE TECHNICAL MATERIEL CORP. MAMARONECK, NEW YORK				
	STOCK SIZE	WHEEL, DIRECTIONAL				
XI	STAINLESS STEEL					
	MATERIAL					
	# 303	SRG	QCB	DB	1/11/65	
	TYPE & TEMPER	HEAT TREAT. SPEC.	DRAWN	CHECKED	FINAL APPROVAL	
	S104 PASSIVATE		RFB	AK	PM1219	Ø
	FINISH & SPEC. NO.	ELEC. DES. APP.	MECH. DES. APP.			

UNLESS OTHERWISE SPECIFIED DIMENSIONS ARE IN INCHES AND INCLUDE CHEMICALLY APPLIED OR PLATED FINISHES	SCALE 1:1				
DECIMALS .X ± .05 .XX ± .01 .XXX ± .005	FRACTIONS ± 1/64 ANGLES ± 0° 30'	TOLERANCES	CODE △		