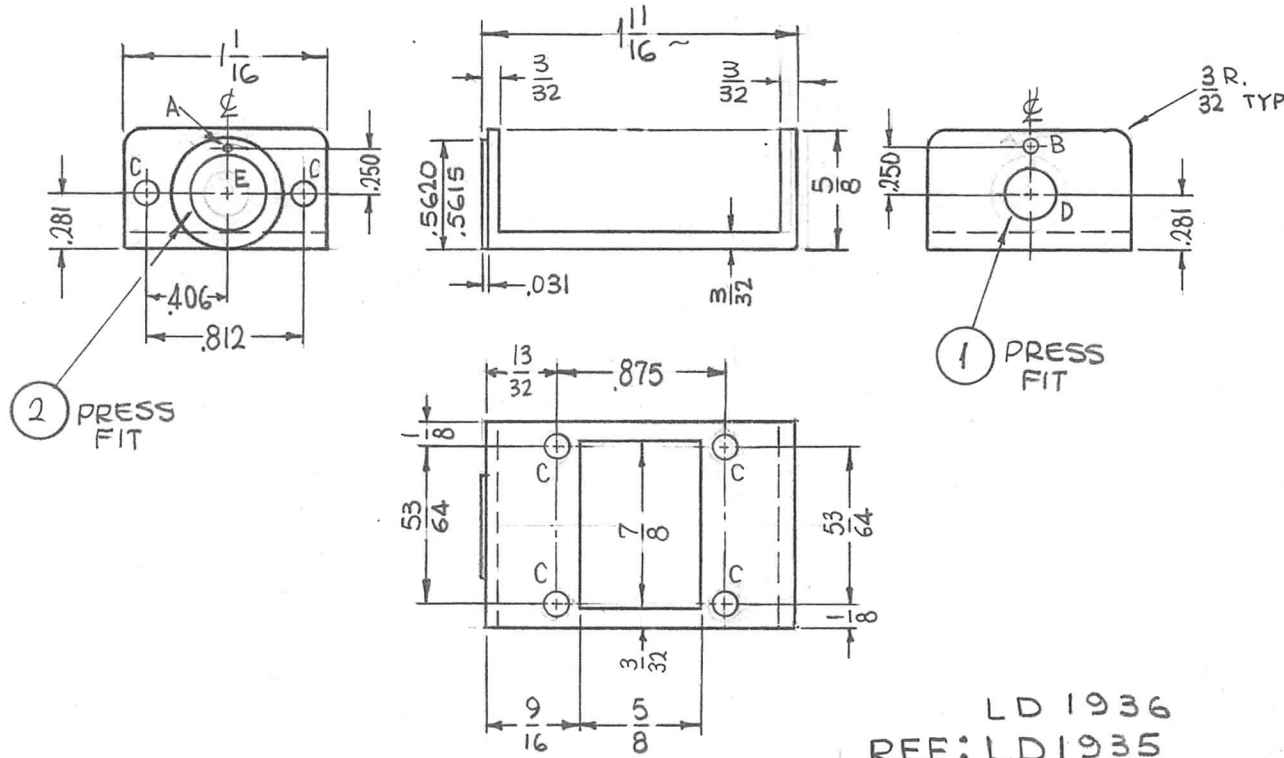


REQ. PER UNIT	USED ON		
	MODEL	ASS'Y. NO.	DATE
2	RFTA-1		3-10-65
2	TSTE-10K	AX580	3-10-65

PM1218 \emptyset



HOLES	DESCRIPTION	REQ
A	.043 DIA. $\begin{matrix} +.002 \\ -.000 \end{matrix}$	1
B	.062 DIA.	1
C	#31 DRILL (.120 DIA.)	6
D	.312 DIA. $\begin{matrix} +.000 \\ -.001 \end{matrix}$	1
E	.375 DIA. $\begin{matrix} +.000 \\ -.001 \end{matrix}$	1

LD 1936
REF: LD1935

REQ.	ITEM	PART NO.	F. BUDETTI DESCRIPTION	SYMBOL
1	2	BB123-30	BEARING CYLINDRICAL	E
1	1	BB123-29	BEARING CYLINDRICAL	D

SYM	DESCRIPTION	DATE	CH. NO.	DRAFTS	CHECKER	ENG. APP.
\emptyset	ORIGINAL RELEASE FOR PRODUCT	6.7.66	\emptyset	WFD		<i>HW</i>
X2	ITEM (1) WAS BB 123 ITEM (2) WAS BB 123	6-21-65	X2	GDL		
X1	"D" HOLE WAS .250 DIA.	3-31-65	X1	SRG		

UNLESS OTHERWISE SPECIFIED
DIMENSIONS ARE IN INCHES AND INCLUDE
CHEMICALLY APPLIED OR PLATED FINISHES

SCALE 1:1

DECIMALS
.X \pm .05
.XX \pm .01
.XXX \pm .005

FRACTIONS
 \pm 1/64
ANGLES
 \pm 0° 30'

TOLERANCES

CODE
A

SEE DWG		THE TECHNICAL MATERIEL CORP. MAMARONECK, NEW YORK			
STOCK SIZE		HOUSING, SWITCH			
ALUMINUM					
MATERIAL					
5052-H32		SRG	<i>QCB</i>	<i>QJB</i>	<i>M. May</i>
TYPE & TEMPER	HEAT TREAT. SPEC.	DRAWN	CHECKED	FINAL APPROVAL	
S404 YEL. IRIDITE		<i>R/S</i>	<i>QCB</i>	PM1218 \emptyset	
FINISH & SPEC. NO.		ELEC. DES. APP.	MECH. DES. APP.		