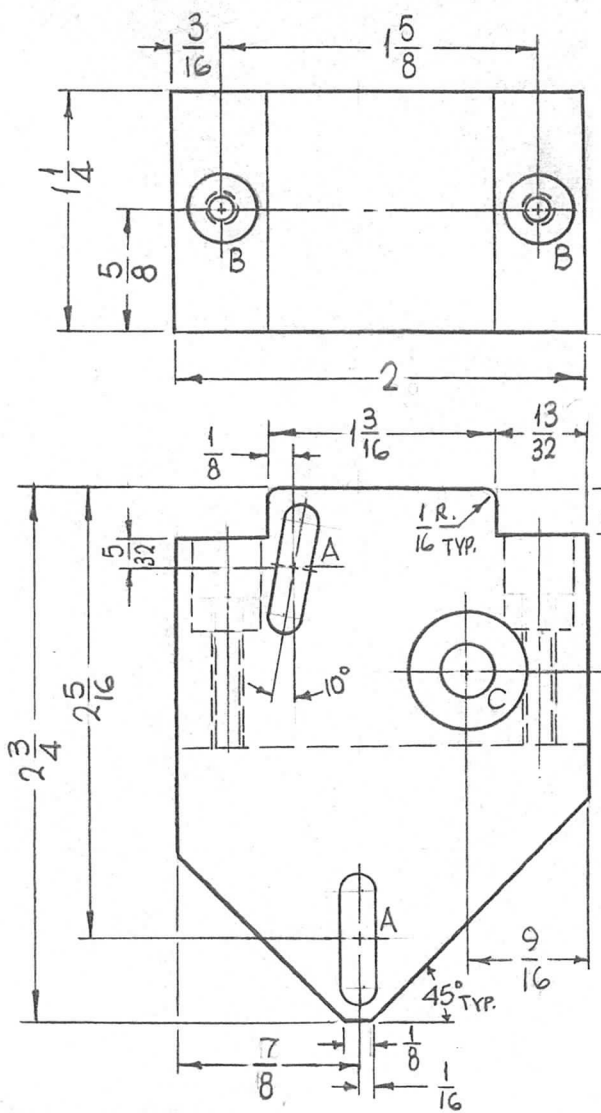
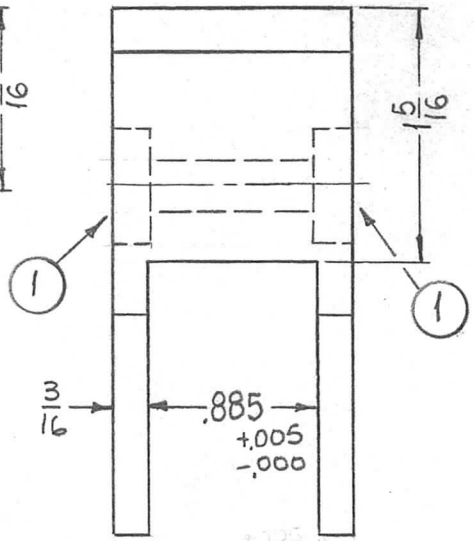


REQ. PER UNIT	USED ON			PM1213	Ø
	MODEL	ASS'Y. NO.	DATE		
1	RFTA-1		2-16-65		



HOLES	DESCRIPTION	REQ.
A	3/16 X 11/16 SLOT	2
B	DRILL & TAP FOR 8-32, C'BORE .281 DIA. X 1/2 DP.	2
C	DRILL 23/64 & C'BORE ON BOTH SIDES $\frac{.6240}{.6245}$ DIA. X .200 DP.	1



Ø	ORIGINAL RELEASE FOR PRODUCTION	6.27.66	#	WHD		HDe
X ₂	C HOLE WAS DR. 9/32, BEARINGS ADDED.	3-9-65	X ₂	SRG		SRG
X ₁	3/16 WAS 1/4, 2 WAS 2-1/8, 9/16 WAS 5/8 7/8 WAS 15/16, 13/32 WAS 15/32, B WAS 10/32	3-3-65	X ₁	SRG		
X	EXP. RELEASE	2-16-65	X	SRG		
SYM	DESCRIPTION	DATE	CH. NO.	DRAFTS	CHECKER	ENG. APP.
UNLESS OTHERWISE SPECIFIED DIMENSIONS ARE IN INCHES AND INCLUDE CHEMICALLY APPLIED OR PLATED FINISHES		SCALE	1:1			
DECIMALS .X ± .05 .XX ± .01 .XXX ± .005	TOLERANCES	FRACTIONS ± 1/64 ANGLES ± 0° 30'	CODE A			

2	1	BB126-1	BEARING, RACE	C
REQ.	ITEM	PART NO.	F. BUDETTI DESCRIPTION	SYMBOL
		AS NOTED	THE TECHNICAL MATERIEL CORP. MAMARONECK, NEW YORK	
		STOCK SIZE	PLATE, SPROCKET ADJUSTMENT	
		ALUMINUM		
		MATERIAL		
2024-T3		SRG	SRG	SRG
TYPE & TEMPER	HEAT TREAT. SPEC.	DRAWN	CHECKED	FINAL APPROVAL
S404 YEL. IRIDITE		SRG	SRG	SRG
FINISH & SPEC. NO.	ELEC. DES. APP.	MECH. DES. APP.	PM1213 Ø	