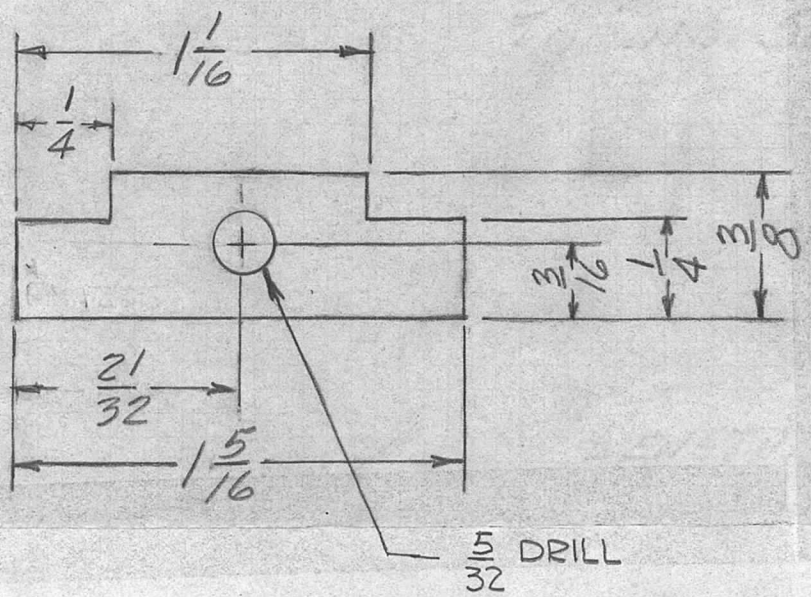
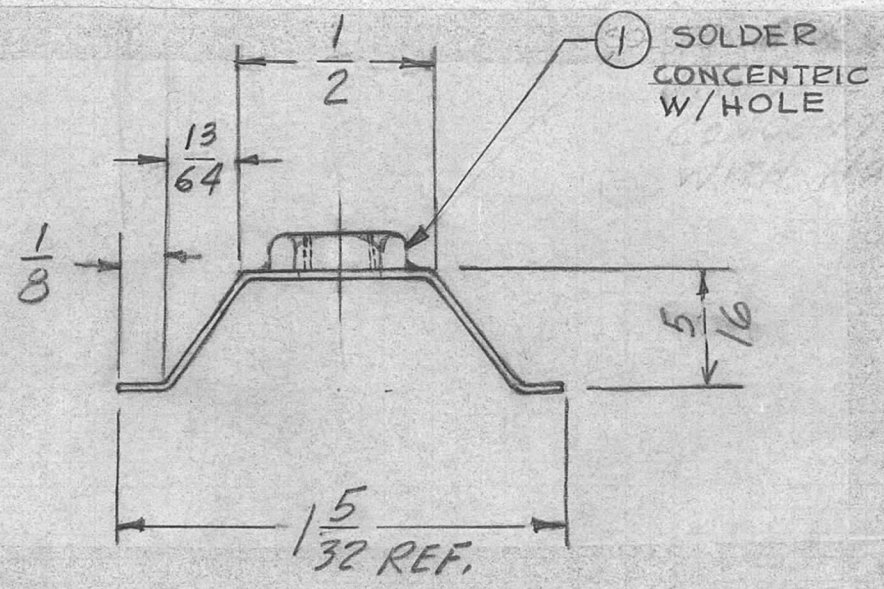


REQ. PER UNIT	USED ON			PM 1206 $\emptyset$
	MODEL	ASS'Y. NO.	DATE	
1	GPR-92		2-6-65	

METAL STAMP THE PINK LINE HIGH BOTH SIDES  
W/ LATEST FILE



LENGTH BEFORE BENDING



NOTE :  
HARDEN AFTER FORMING  
2 HOURS AT 600°F

				1	1	NTH0632BR10	NUT, PLN, HEX.			
				REQ. ITEM	PART NO.		D. HAY	DESCRIPTION	SYMBOL	
						# 28 (.0156) THK.	THE TECHNICAL MATERIEL CORP. MAMARONECK, NEW YORK			
						BERYLLIUM COPPER	TENSIONER, TUNING SLUG			
						MATERIAL				
						ALLOY 25	G.D.L. 2-6-65	JCB	RJC	
						TYPE & TEMPER	HEAT TREAT. SPEC.	DRAWN	CHECKED	FINAL APPROVAL
								MMK 2/8/65	PM1206 $\emptyset$	
						FINISH & SPEC. NO.		ELEC. DES. APP.	MECH. DES. APP.	
UNLESS OTHERWISE SPECIFIED DIMENSIONS ARE IN INCHES AND INCLUDE CHEMICALLY APPLIED OR PLATED FINISHES		SCALE		2:1						
DECIMALS .X ± .05 .XX ± .01 .XXX ± .005		FRACTIONS ± 1/64 ANGLES ± 0° 30'		CODE						
TOLERANCES										