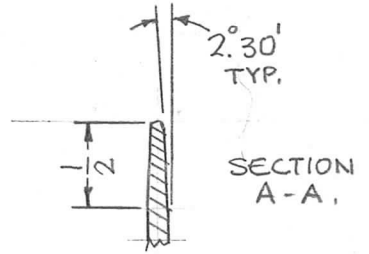
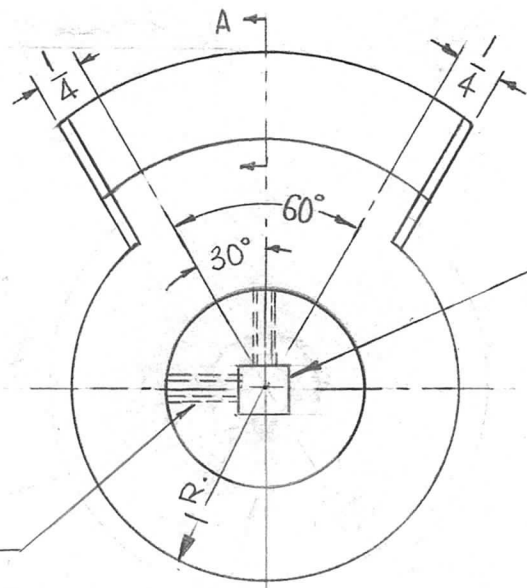
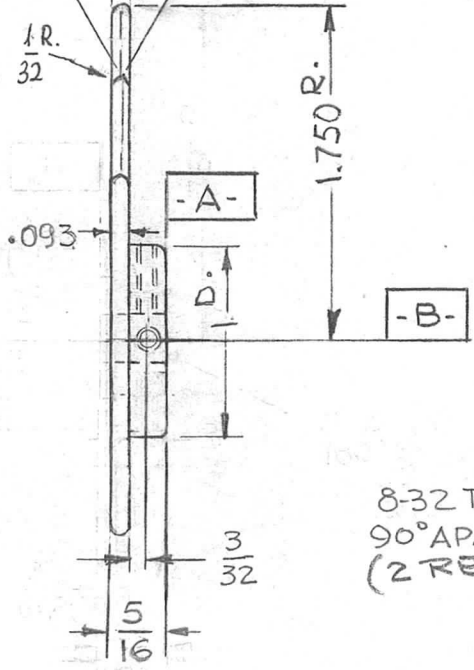
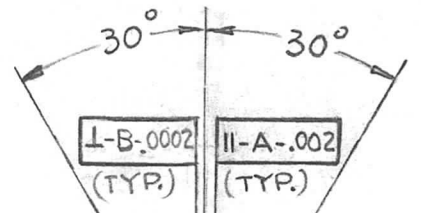


REQ. PER UNIT	USED ON			PM1201	Ø
	MODEL	ASS'Y. NO.	DATE		
2	RFTA-1		12-22-64		



8-32 TAP
90° APART
(2 REQ)

.250 SQ-BROACH
+.0005
-.0000

NOTE:
- ROUND ALL EDGES 1/64R.
- ALL DIM. APPLY AFTER PLATING.

Ø	ORIGINAL RELEASE FOR PRODUCTION	4/26/67	Ø	CV	<i>Handwritten initials</i>	REQ. ITEM	PART NO.	DESCRIPTION	SYMBOL	
X8	BEVEL ADDED	8-25-66	X8	<i>Handwritten initials</i>	<i>Handwritten initials</i>	AS NOTED		THE TECHNICAL MATERIEL CORP. MAMARONECK. NEW YORK		
X7	MODEL TLAA-2.5K DELETED	8-9-66	X7	GDL		STOCK SIZE		ROTOR, BANDSWITCH		
X6	UPDATED	7-14-66	-	GDL		BRASS				
SYM	DESCRIPTION	DATE	CH. NO.	DRAFTS	CHECKER	ENG. APP.	MATERIAL			
UNLESS OTHERWISE SPECIFIED DIMENSIONS ARE IN INCHES AND INCLUDE CHEMICALLY APPLIED OR PLATED FINISHES		SCALE 1:1				HALF HARD		SRG	<i>Handwritten initials</i>	
DECIMALS .X ± .05 .XX ± .01 .XXX ± .005		FRACTIONS ± 1/64 ANGLES ± 0° 30'		CODE A		TYPE & TEMPER S245 SILVER PLATE S423 IRIDITE 18 P SILVER KOTE		DRAWN <i>Handwritten initials</i>	CHECKED <i>Handwritten initials</i>	FINAL APPROVAL <i>Handwritten initials</i>
TOLERANCES						FINISH & SPEC. NO.		ELEC. DES. APP.	MECH. DES. APP.	PM1201