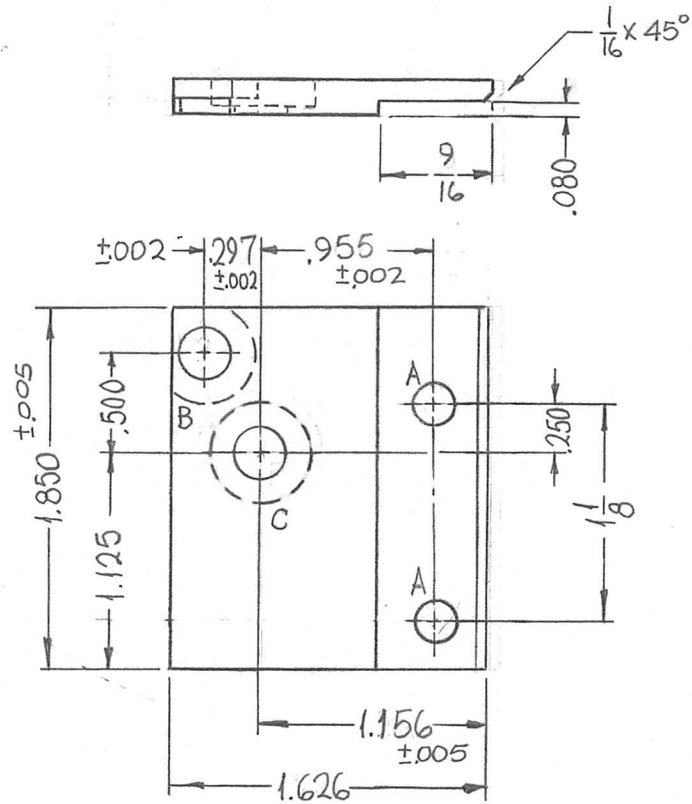
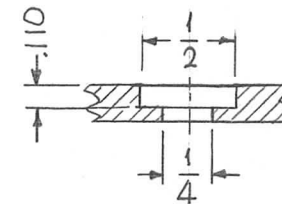


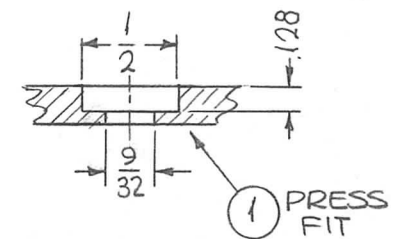
REQ. PER UNIT	USED ON			PM1198	Ø
	MODEL	ASS'Y. NO.	DATE		
1	RFTA-1		1-12-64		



HOLES	DESCRIPTION	REQ.
A	13/64 DIA.	2
B	SEE DETAIL	1
C	SEE DETAIL	1



B-DETAIL



C-DETAIL

REF. LD 1765

Ø	ORIGINAL RELEASE FOR PRODUCTION	6.7.66	#	LHW			1	1	BB 126-15	BEARING RACE	C		
X1	297 WAS 292, 955 WA 906 1.156 WAS 1.240, 1.626 WAS 1.710	2-4-65	X1	SRG					REQ. ITEM	PART NO.	F. BUDETTI DESCRIPTION	SYMBOL	
X	EXP. RELEASE								3/16 THICK		THE TECHNICAL MATERIEL CORP. MAMARONECK. NEW YORK		
									STOCK SIZE		PLATE, SWITCH. MTG.		
									ALUMINUM				
									MATERIAL				
	UNLESS OTHERWISE SPECIFIED DIMENSIONS ARE IN INCHES AND INCLUDE CHEMICALLY APPLIED OR PLATED FINISHES	SCALE					2024-T3		SRG	QCB	QCB	FINAL APPROVAL	
		1:1					TYPE & TEMPER	HEAT TREAT. SPEC.	DRAWN	CHECKED			
	DECIMALS .X ± .05 .XX ± .01 .XXX ± .005	FRACTIONS ± 1/64 ANGLES ± 0° 30'	CODE					5404 YEL. IRIDITE		R/B		PM1198	Ø
	TOLERANCES		A					FINISH & SPEC. NO.		ELEC. DES. APP.	MECH. DES. APP.		