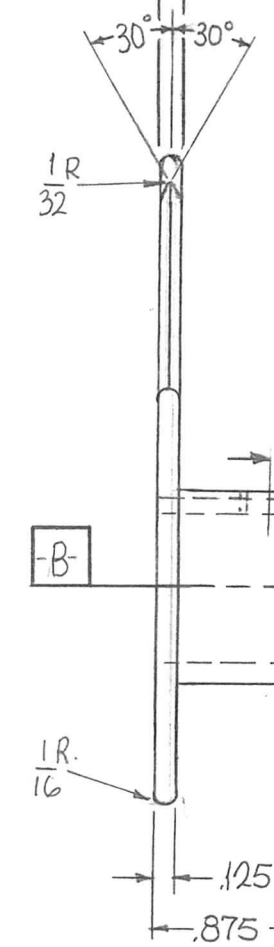
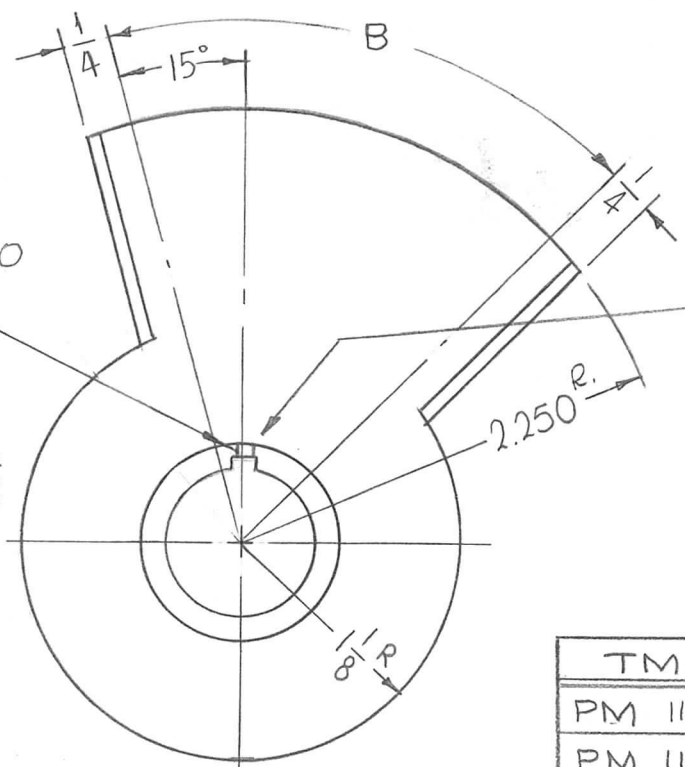


REQ. PER UNIT	USED ON			PM1186	A
	MODEL	ASS'Y. NO.	DATE		
1	TST-10K		G-28-65		

1-B-.002 TYP. 11-A-.002 TYP.



KEYWAY
1/8 WIDE X .070
DEEP.



DRILL & TAP THRU
FOR 8-32

TMC P/N	A	B
PM 1186-1	.501 ^{+0.001} _{-.000}	60°
PM 1186-2	.501 ^{+0.001} _{-.000}	90°

A	ADD CHART	1-9-70	19702	KD	<i>[Signature]</i>	<i>[Signature]</i>	REQ. ITEM	PART NO.	F. BUDETTI	DESCRIPTION	SYMBOL	
Ø	ORIGINAL RELEASE FOR PRODUCTION	6/17/66	Ø	CV	<i>[Signature]</i>	<i>[Signature]</i>	SEE DNG		THE TECHNICAL MATERIEL CORP. MAMARONECK, NEW YORK			
XZ	8-32 TAPPED HOLE ADDED	11/9/65	XZ	FO	<i>[Signature]</i>	<i>[Signature]</i>	STOCK SIZE		ROTOR, BANDSWITCH, "L" SECT.			
X1	.756 WAS .502, 111 ADDED	6-28-65	X1	<i>[Signature]</i>	<i>[Signature]</i>	<i>[Signature]</i>	MATERIAL		BRASS			
SYM	DESCRIPTION	DATE	CH. NO.	DRAFTS	CHECKER	ENG. APP.	MATERIAL		UNLESS OTHERWISE SPECIFIED DIMENSIONS ARE IN INCHES AND INCLUDE CHEMICALLY APPLIED OR PLATED FINISHES			
		SCALE		1:1			HALF HARD		DRAWN: <i>[Signature]</i> 6/15/66			
							TYPE & TEMPER		HEAT TREAT. SPEC.		CHECKED: <i>[Signature]</i>	FINAL APPROVAL: <i>[Signature]</i>
DECIMALS		FRACTIONS		CODE			S423 SILVER-KOTE		S245 SILVER PLATE		PM1186	
.X ± .05		± 1/64		A			FINISH & SPEC. NO.		ELEC. DES. APP.		MECH. DES. APP.	A
.XX ± .01		ANGLES										
.XXX ± .005		± 0° 30'										