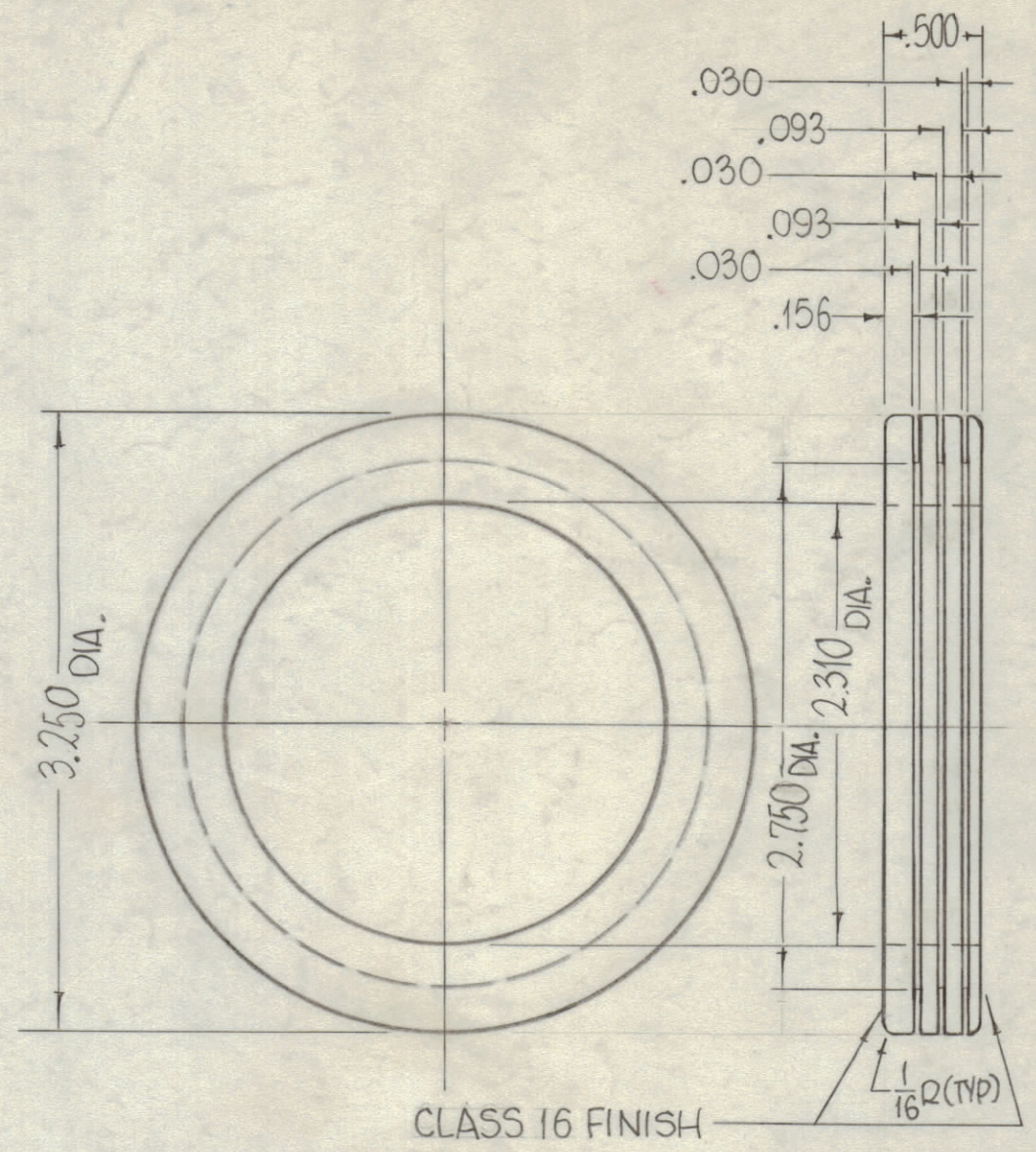
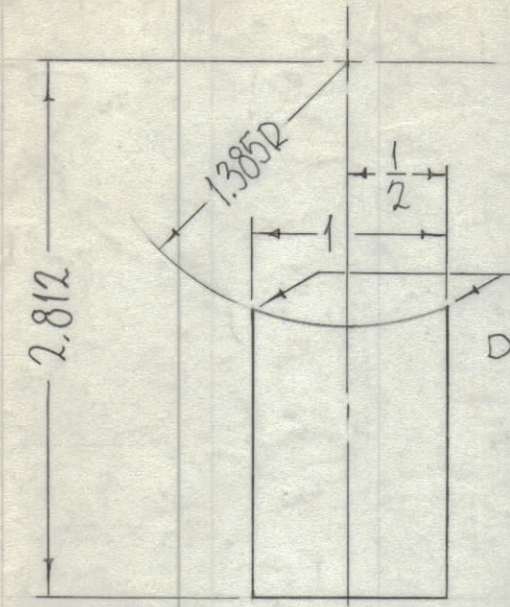


REVISIONS					
ZONE	SYM	DESCRIPTION	DATE	E.M.N. NO.	APPD
X		EXPERIMENTAL RELEASE	12-1-64	X	SRS
Ø		ORIGINAL RELEASE FOR PRODUCTION	6/17/66	Ø	CV



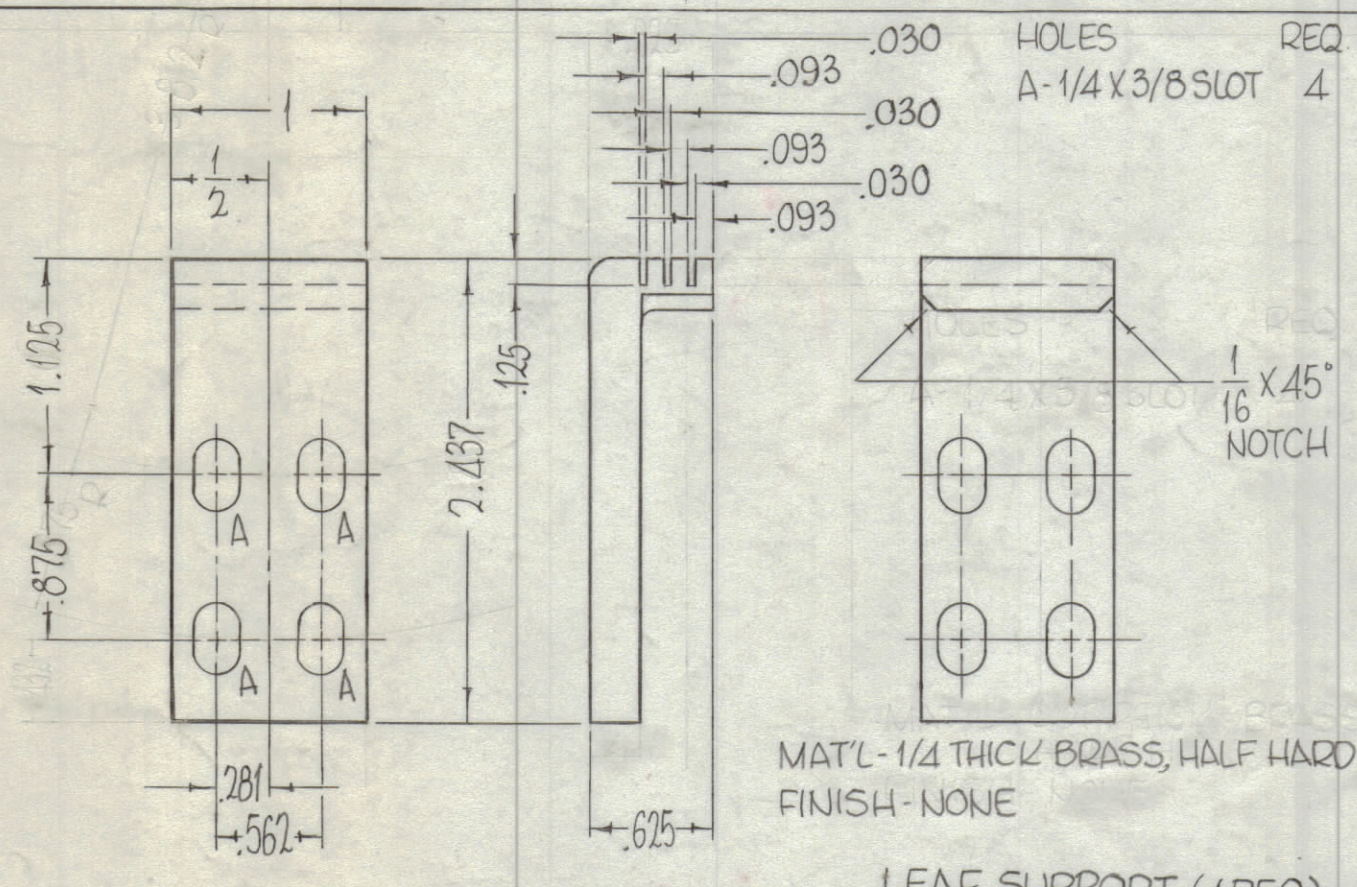
STOCK SIZE AS NOTED
MATERIAL - BRASS, FREE MACHINING
FINISH - NONE

RING (1REQ)



MAT'L - .025 THICK MAX.
COPPER, SOFT
FINISH - NONE
DO NOT BREAK

LEAF (3REQ)

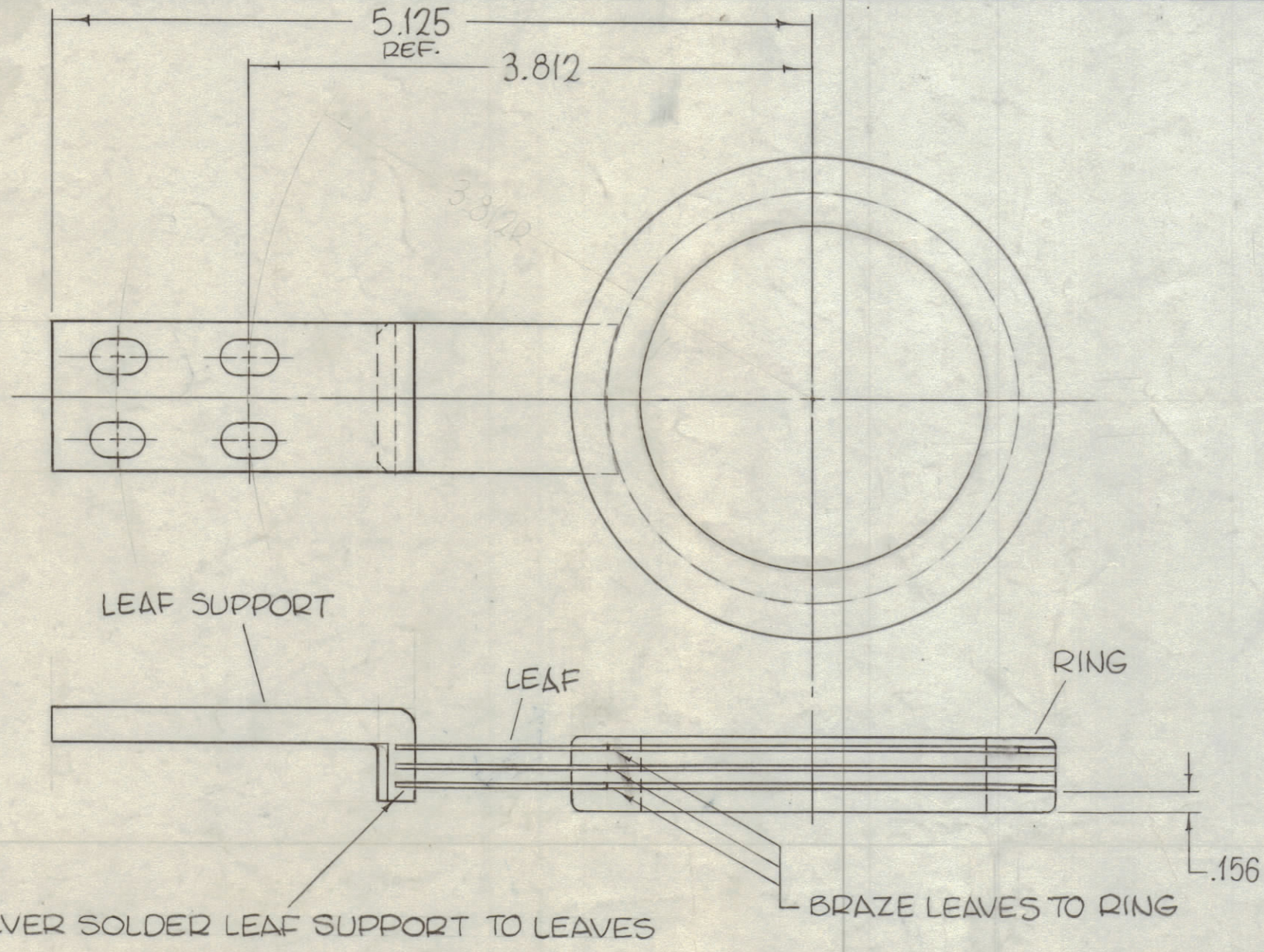


HOLES REQ.
A-1/4 X 3/8 SLOT 4

1/16 X 45°
NOTCH

MAT'L - 1/4 THICK BRASS, HALF HARD
FINISH - NONE

LEAF SUPPORT (1REQ)



LEAF SUPPORT

LEAF

RING

SILVER SOLDER LEAF SUPPORT TO LEAVES

BRAZE LEAVES TO RING

PM1176

REQ'D.	ITEM	PART NUMBER	DESCRIPTION	SYMBOL
	F. BUDETTI		LIST OF MATERIAL	PM16
MATERIAL		THE TECHNICAL MATERIEL CORP. MAMARONECK, NEW YORK		
SEE INDIVIDUAL PARTS		TITLE		
FINISH		CONTACT, WIPER		
SEE NOTES		DRAWN John C. Biele		
		DATE 11-3-64		
		CHECKED JLB		
		DATE 6-15-66		
		ELECT. DES. JLB		
		DATE 6/17/66		
		MECH. DES. JLB		
		DATE 6/17/66		
		SHEET		
		REV. LTR.		

UNLESS OTHERWISE SPECIFIED:
ROUND ALL EDGES & CORNERS 1/32 R.
POLISH BEFORE PLATING
ALL DIMENSIONS APPLY AFTER PLATING

S245 - SILVER PLATE, BRIGHT
S423 - IRIDITE 18-0 SILVER-KOTE
SEMI-BUFF BRASS RING AFTER PLATING

NOTES

Q'TY/UNIT	MODEL USED ON	ASS'Y. NO.
1	TST-10K	
SCALE 1:1	CODE A	

THE CONTENTS OF THIS DRAWING ARE THE EXCLUSIVE PROPERTY OF THE TECHNICAL MATERIEL CORP. ITS UNAUTHORIZED USE OR REPRODUCTION IN WHOLE OR IN PART IS STRICTLY FORBIDDEN.

UNLESS OTHERWISE SPECIFIED
DIMENSIONS ARE IN INCHES AND INCLUDE
CHEMICALLY APPLIED OR PLATED FINISHES

DECIMALS .X ± .05 .XX ± .01 .XXX ± .005
FRACTIONS ± 1/64
TOLERANCES ANGLES ± 0° 30'

DATE	FINAL APPROVAL	DATE
11-3-64	JLB	6/17/66
6-15-66	JLB	
6/17/66	JLB	
6/17/66	JLB	