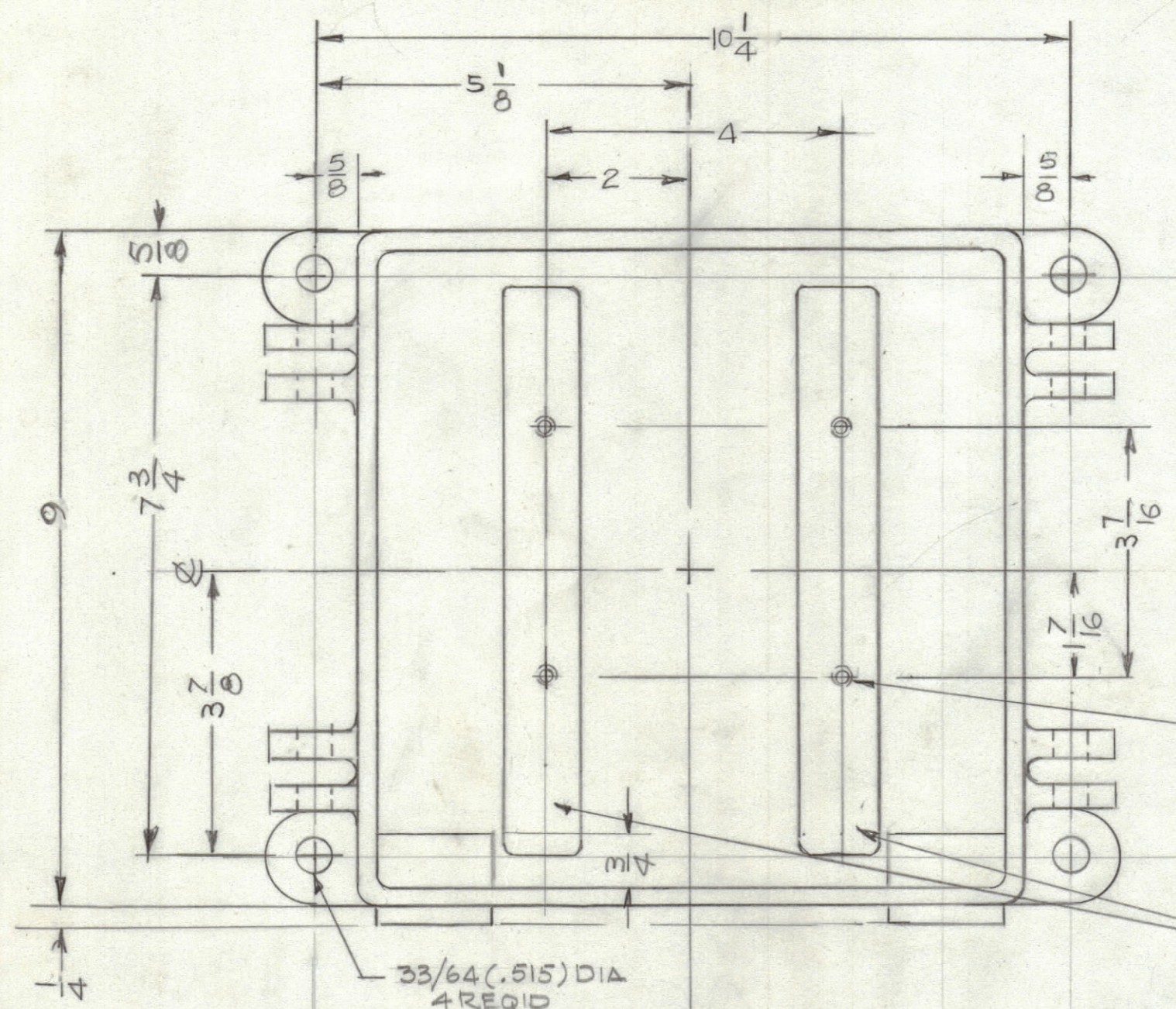
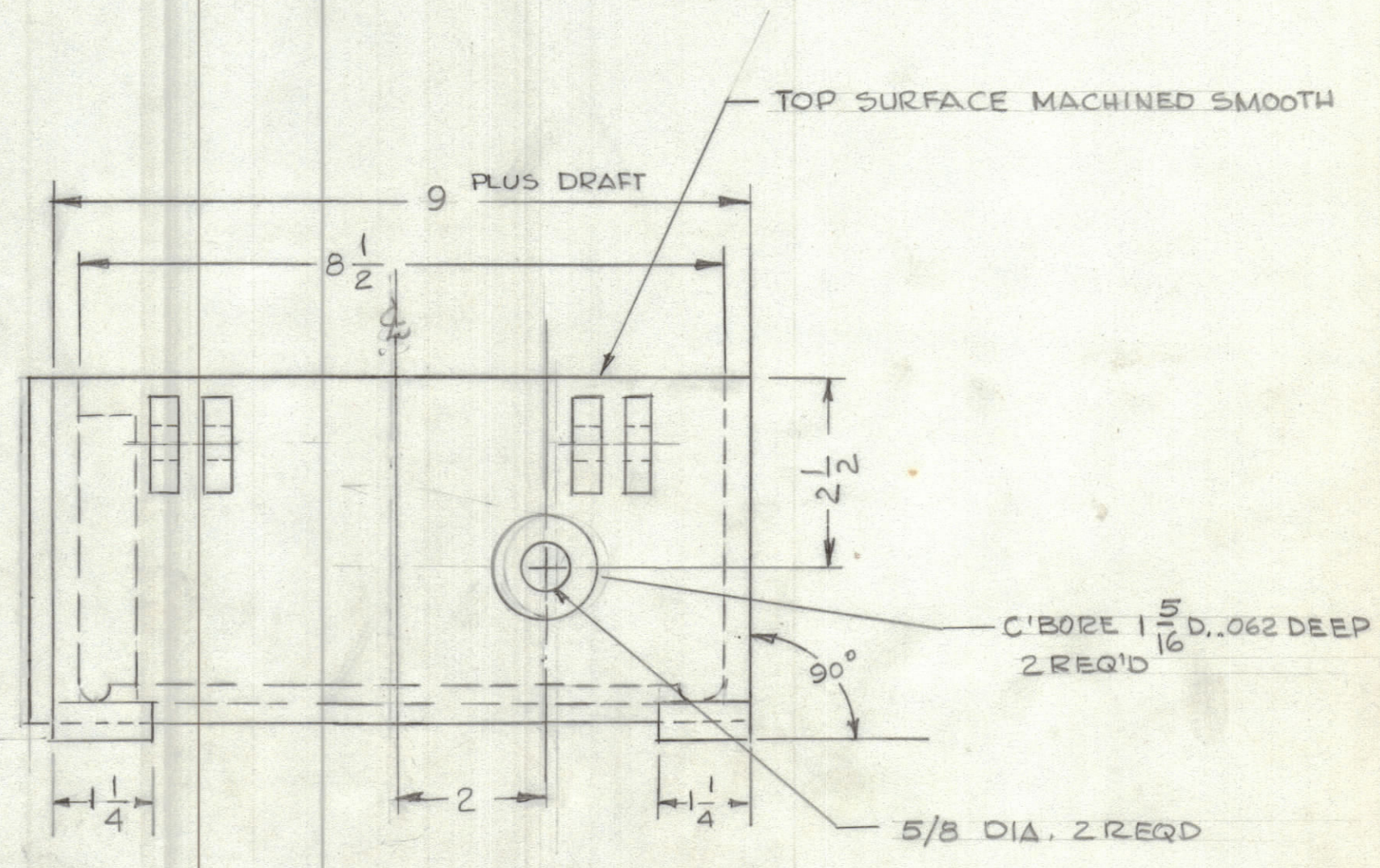
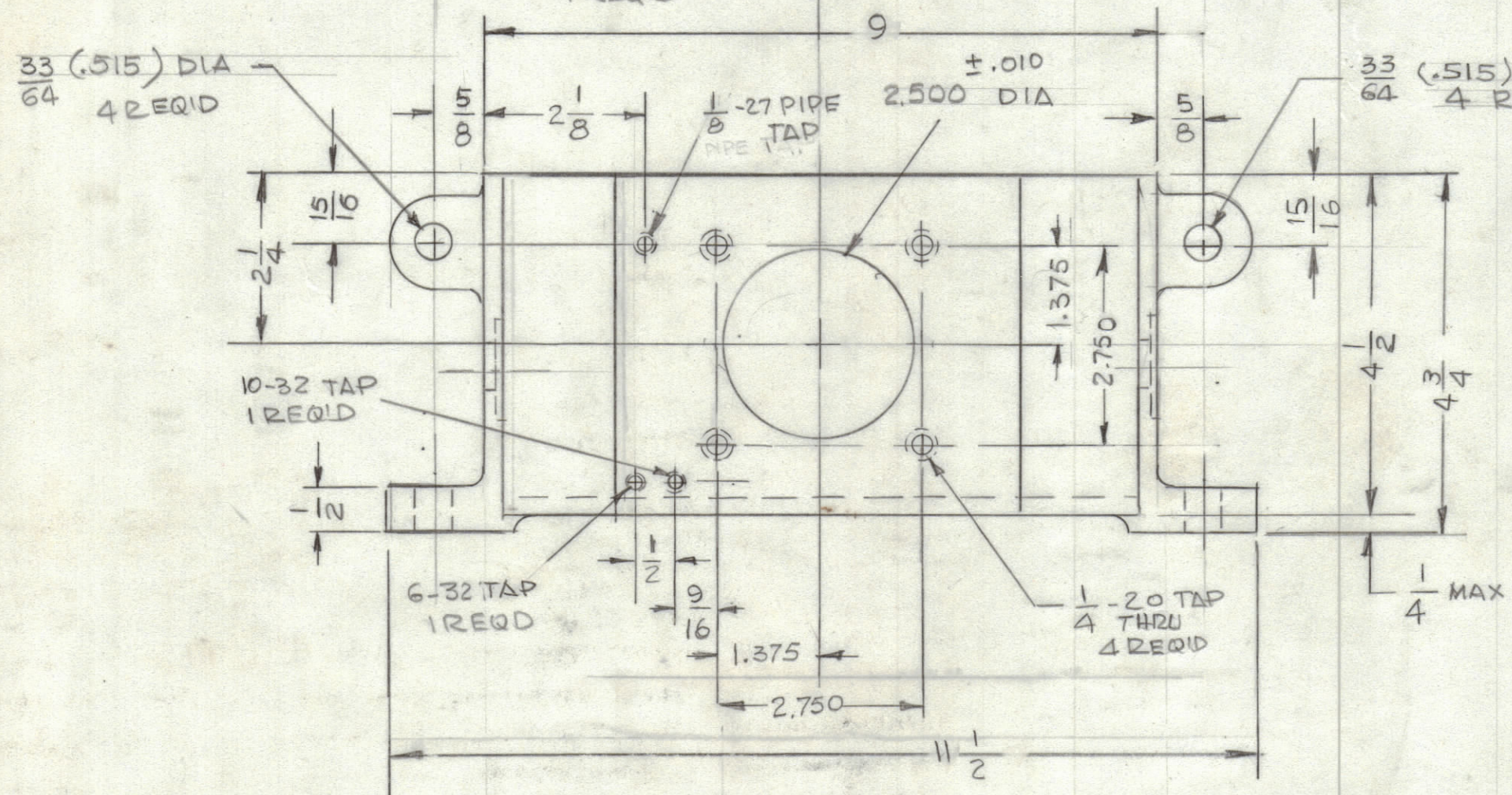


REVISIONS						
ZONE	LTR	DESCRIPTION	DATE	E.M.N.O	DRAFT	CHKD APPD
	A	SHEET 1 OBSOLETE, SHEET 2 ADD	7-3-91		GDL	



8-32 BLIND TAP 3/8 DEEP
4 REQ'D

NOTE:
MASK RIBS
BEFORE PAINTING



TOP SURFACE MACHINED SMOOTH

C-BORE 1 5/16 DIA, .062 DEEP
2 REQ'D

5/8 DIA, 2 REQ'D

REF: CS 120

UNLESS OTHERWISE SPECIFIED
DIMENSIONS ARE IN INCHES
AND INCLUDE CHEMICALLY APPLIED
OR PLATED FINISHES

TOLERANCES ON

DECIMALS	FRACTIONS
.X ± .05	± 1/64
.XX ± .01	ANGLES
.XXX ± .005	± 0° -30'

MATERIAL ALUMINUM
TYPE 356-T6

FINISH S402 VEL IRIDITE
S114 ZINC CHROMATE PRIMER
S115 SMOOTH GREY ENAMEL

QTY. REQ.	ITEM	PART NO.	DESCRIPTION	SYMBOL
LIST OF MATERIAL				
THE TECHNICAL MATERIEL CORP. MAMARONECK, NEW YORK				
CASE, MACHINING				
MATERIAL ALUMINUM TYPE 356-T6			SIZE CODE IDENT.NO. DWG NO.	ISSUE
			C 82679 PM 1158	Δ
SCALE 1/2			SHEET 2 OF 2	

QTY / UNIT	MODEL USED ON	ASS'Y NO.
APPLICATION		
RAC-45		
CODE		
NOTICE TO PERSONS RECEIVING THIS DRAWING		
THE TECHNICAL MATERIEL CORPORATION claims proprietary right in the material disclosed hereon. This drawing is issued in confidence for engineering information only and may not be reproduced or used to manufacture anything shown hereon without permission from THE TECHNICAL MATERIEL CORPORATION to the user. This drawing is loaned for mutual assistance and is subject to recall at any time.		