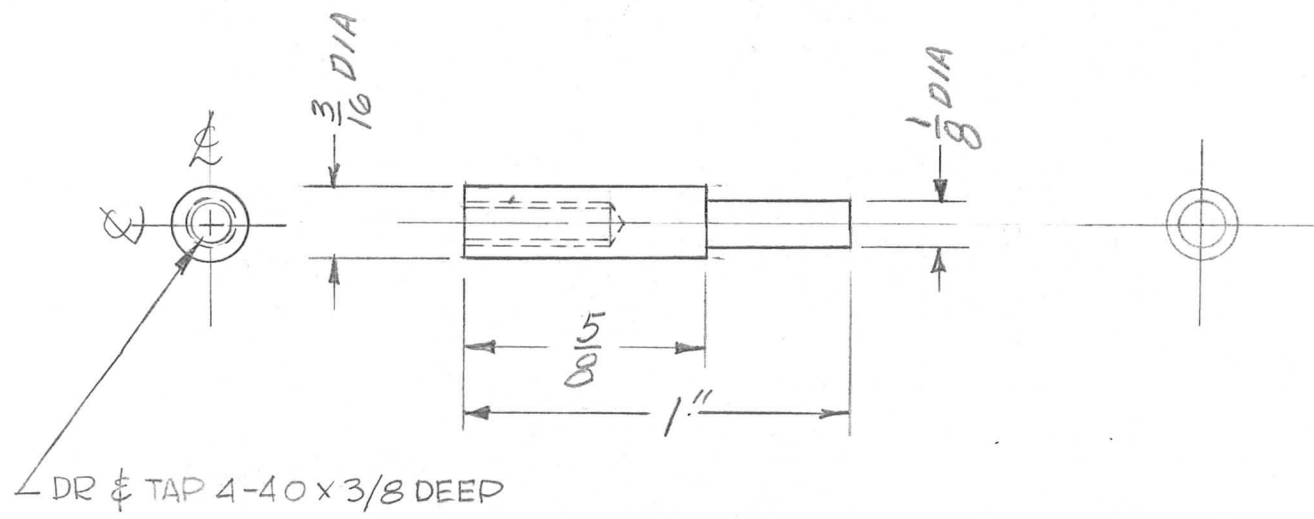


REQ. PER UNIT	USED ON			PM1139	⊗
	MODEL	ASS'Y. NO.	DATE		
1	VLRB-1				



							REQ.	ITEM	PART NO.	0. POSE	DESCRIPTION	SYMBOL	
⊗	ORIGINAL RELEASE FOR PRODUCTION	4.9.65	⊗	DL1			STOCK SIZE			THE TECHNICAL MATERIEL CORP. MAMARONECK, NEW YORK			
X	EXPER. RELEASE						MATERIAL			STOP PIN			
SYM	DESCRIPTION	DATE	CH. NO.	DRAFTS	CHECKER	ENG. APP.	MATERIAL			MAIN PULLEY DIAL DRIVE			
UNLESS OTHERWISE SPECIFIED DIMENSIONS ARE IN INCHES AND INCLUDE CHEMICALLY APPLIED OR PLATED FINISHES						SCALE	303			D.A.I.C.	⊗	⊗	
						2:1	TYPE & TEMPER	HEAT TREAT. SPEC.	DRAWN		CHECKED	FINAL APPROVAL	
DECIMALS .X ± .05 .XX ± .01 .XXX ± .005	TOLERANCES	FRACTIONS ± 1/64 ANGLES ± 0° 30'	CODE A				S104 PASSIVATE					PM1139	⊗
							FINISH & SPEC. NO.		ELEC. DES. APP.	MECH. DES. APP.			