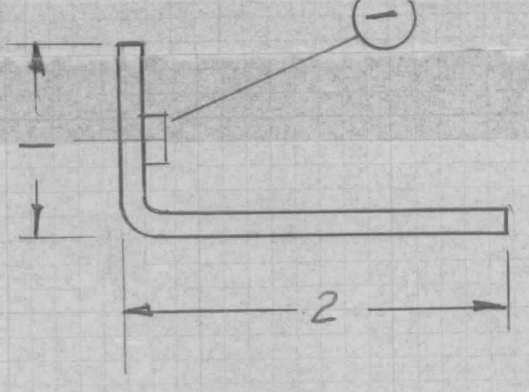


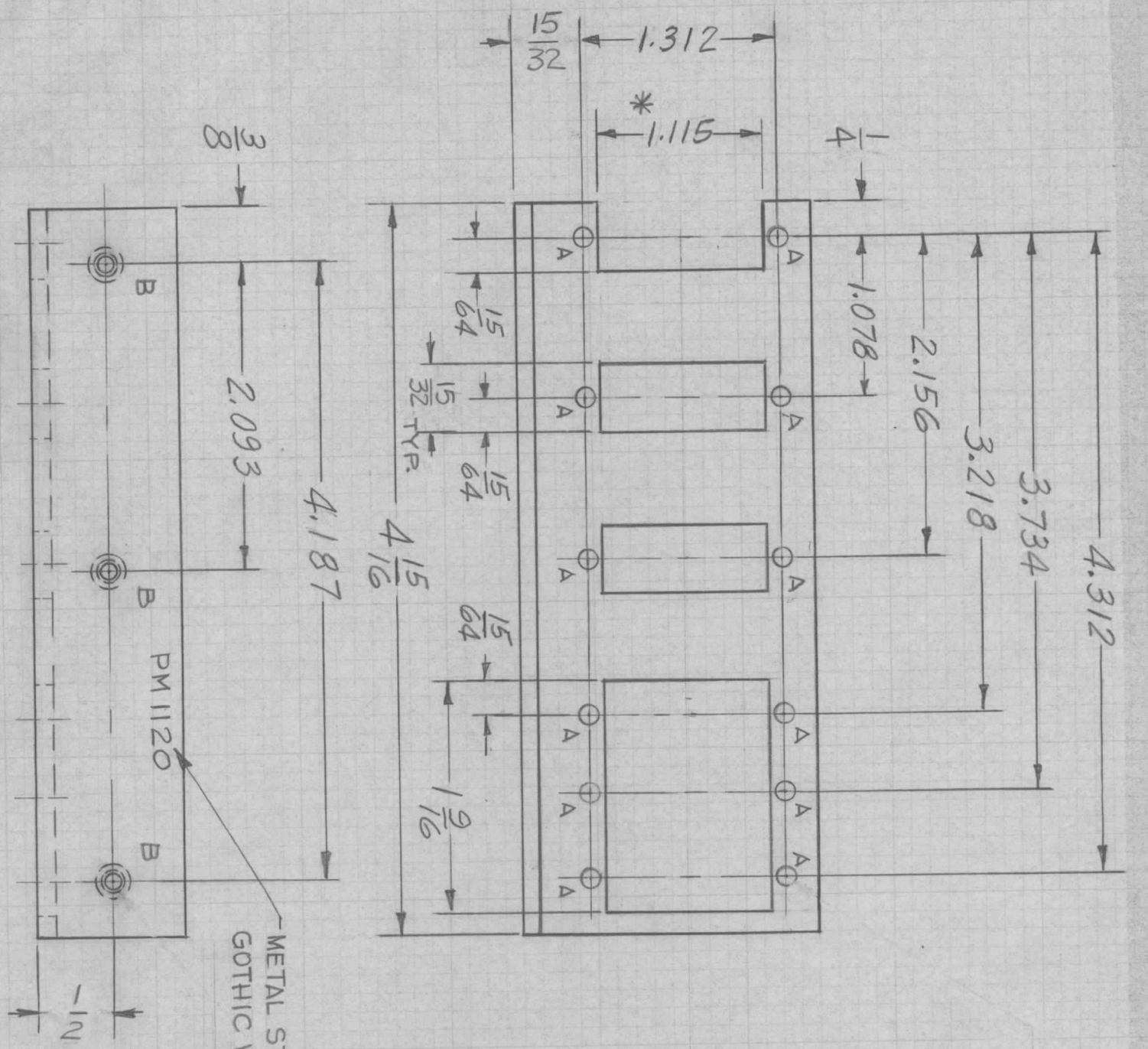
REVISIONS		DATE	E.M.N. NO.	DRAFT	CHKD	APPD
SYM	DESCRIPTION					
X	EXPER. RELEASE					
X1	CHANGED FROM EXTRUDED TO FLAT	12-1-64		GDL		
Ø	ORIGINAL RELEASE FOR PRODUCTION	4/9/65		Ø		

PM1120						
--------	--	--	--	--	--	--

HOLE	DESCRIPTION	REQ
A	9/64 DIA	12
B	.191-.194 DIA	3



MOUNT IN ALL 'B' HOLES (1)



METAL STAMP TMC P/NO 1/8 HIGH
GOTHIC W/LATEST REV. LETTER

REQ'D.	ITEM	PART NUMBER	DESCRIPTION	SYMBOL
3	1	NT129-632-6	NUT, PLAIN, SPLINE	

LIST OF MATERIAL		TITLE	
MATERIAL	.125 THK ALUMINUM 5052-H32	THE TECHNICAL MATERIEL CORP. MAMARONECK, NEW YORK	
FINISH	5404 YEL. IRIDITE	BRACKET, CONNECTOR, MTG	

DRAWN	CHECKED	ELECT. DES.	MECH. DES.	DATE	FINAL APPROVAL	DATE
GDL	Ø					
					PM1120	

- UNLESS OTHERWISE SPECIFIED:
1. USE MATERIAL THICKNESS FOR MAXIMUM RADIUS ON ALL BENDS
 2. ALL ANGULAR BENDS 90 DEGREES
 3. REMOVE ALL BURRS AND SHARP EDGES
 4. MOUNT INSERTS AFTER FINISHING

* CUTOUTS CENTERED BETWEEN HOLES

NOTES

QTY./UNIT	1	VL2B-1	MODEL USED ON	ASS'Y. NO.
SCALE	1:1	A	CODE	

THE CONTENTS OF THIS DRAWING ARE THE EXCLUSIVE PROPERTY OF THE TECHNICAL MATERIEL CORP. ITS UNAUTHORIZED USE OR REPRODUCTION IN WHOLE OR IN PART IS STRICTLY FORBIDDEN.