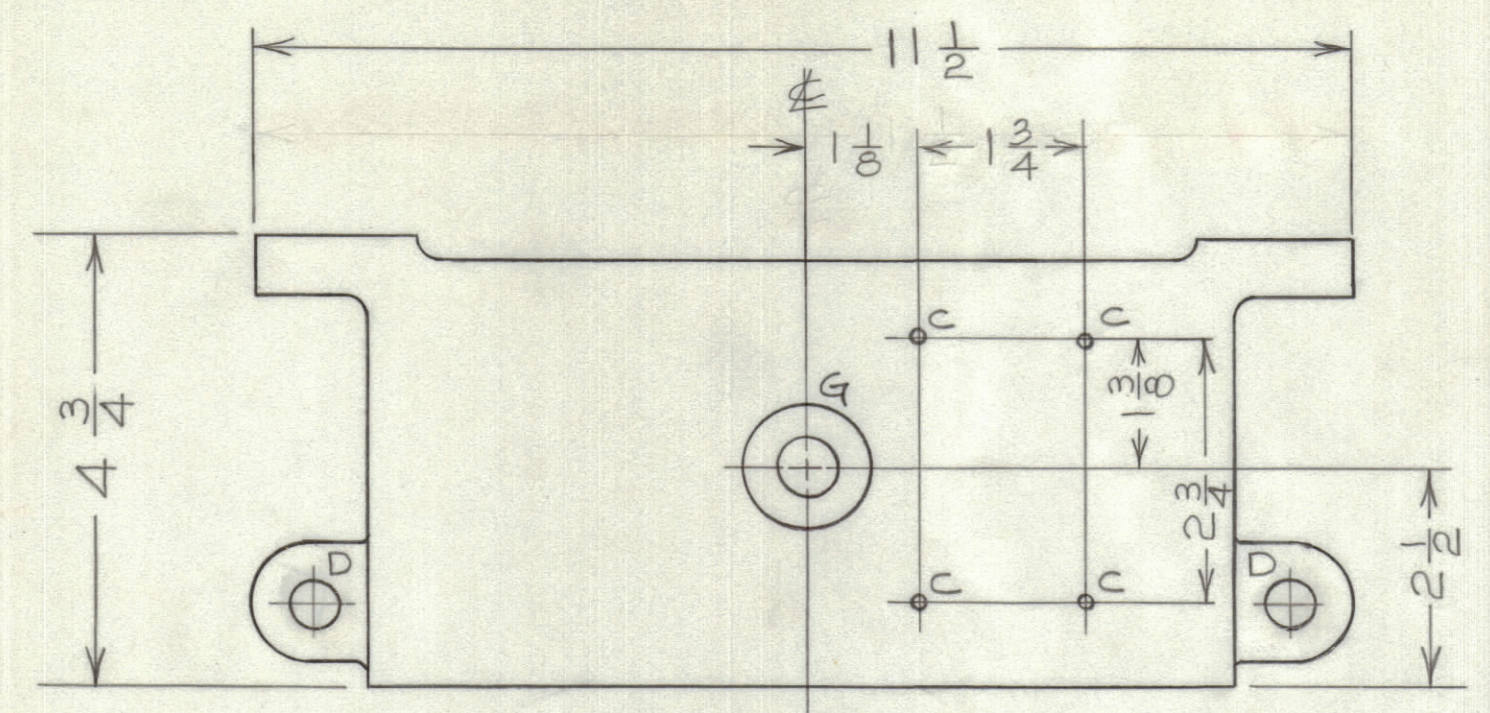


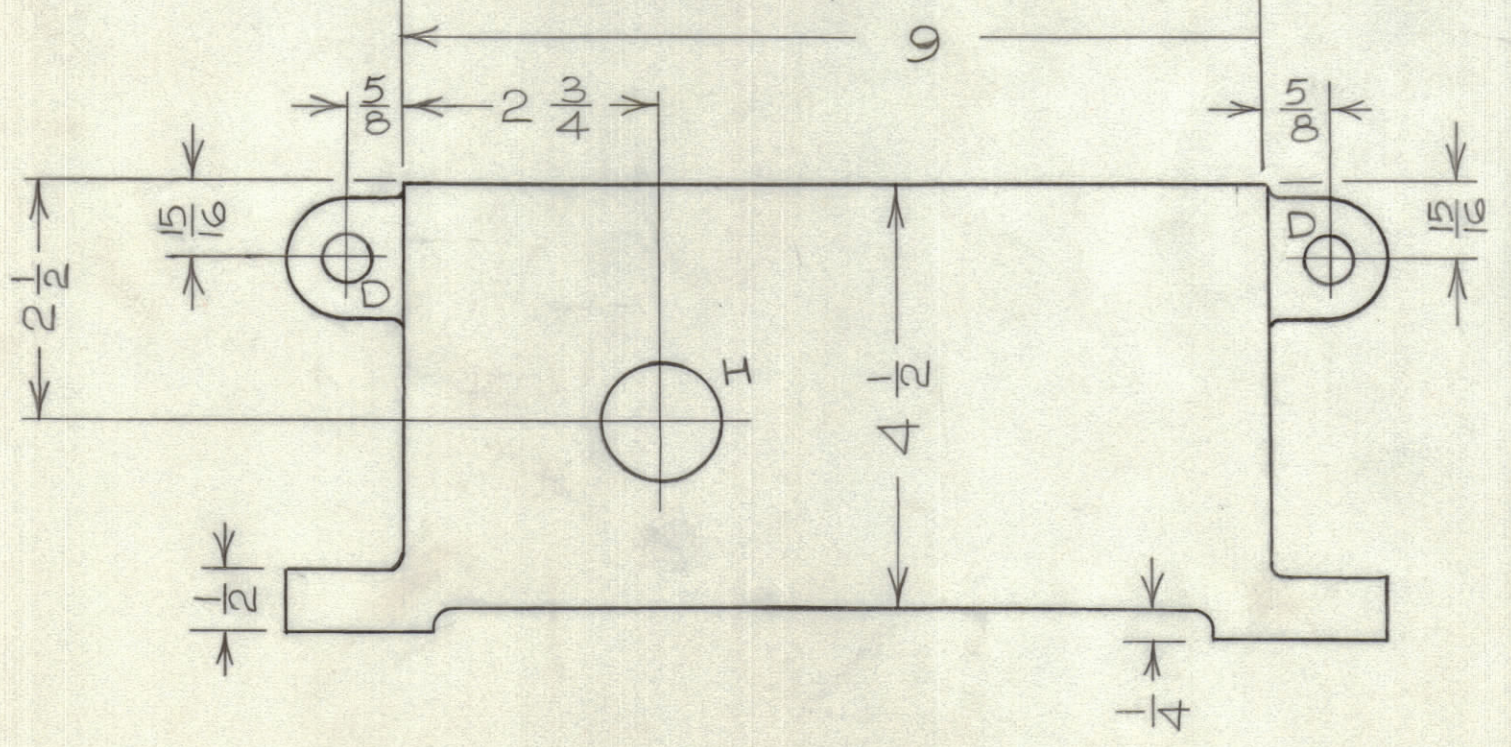
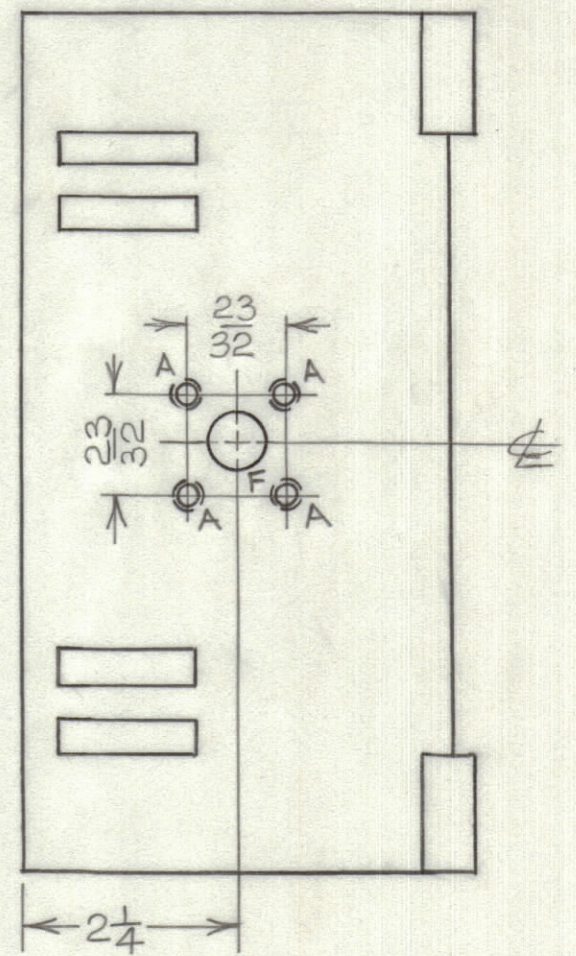
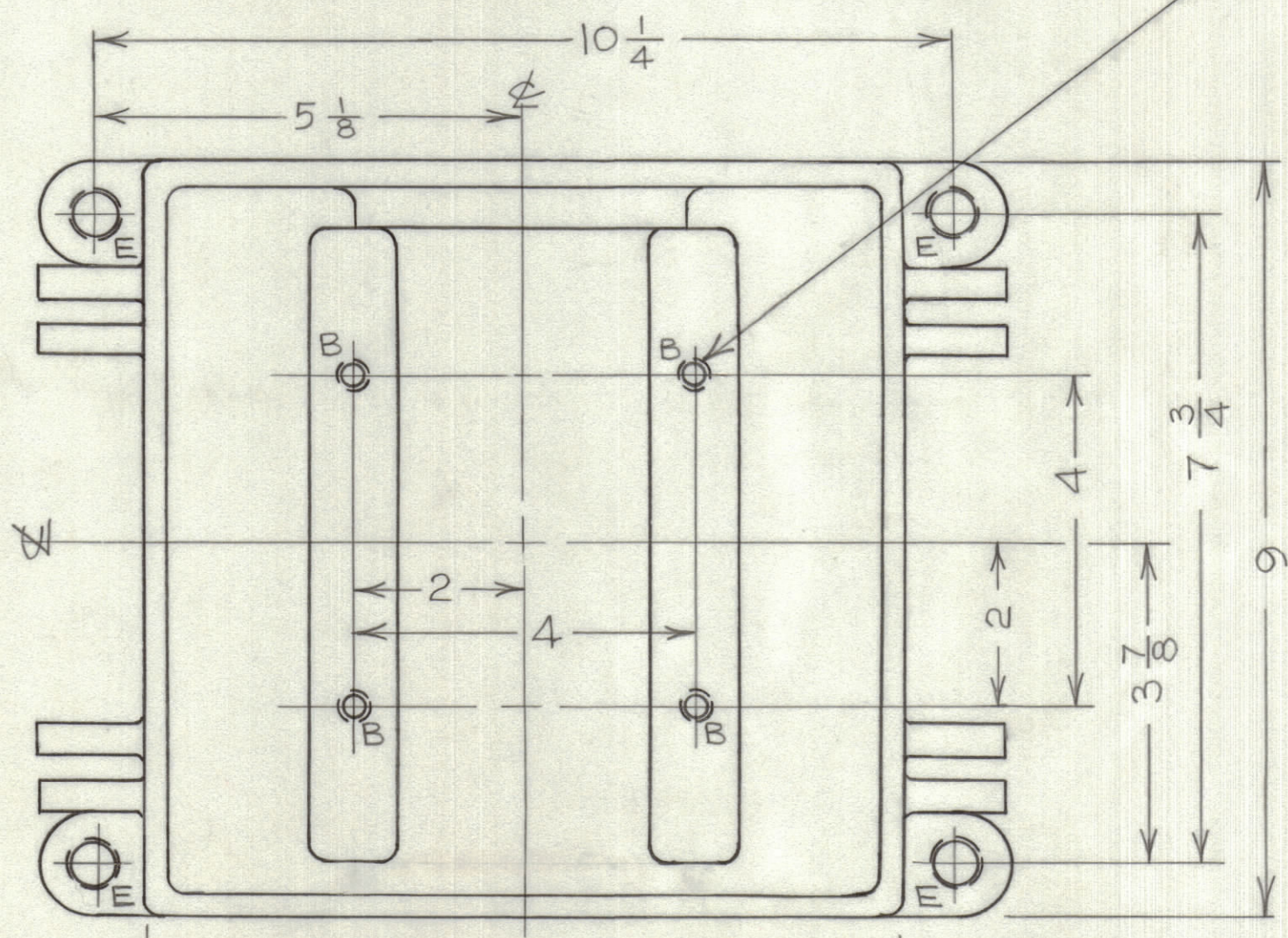
IF IT IS FOUND DESIRABLE TO CHANGE ANY TOLERANCE OR OTHER DETAIL SPECIFIED ON THIS DRAWING NOTIFY THE PURCHASER PROMPTLY.		DIMENSIONS IN INCHES UNLESS OTHERWISE SPECIFIED					
MAXIMUM ALLOWABLE TOLERANCES HAVE BEEN DETERMINED AND DEVIATIONS WILL BE CAUSE FOR REJECTION. REMOVE ALL BURRS AND SHARP EDGES.							
ISSUE	ITEM	CHANGED FROM	DATE	CN. NO.	DRAFTS	CHECKER	ENG. APP.

REQ.	ITEM	PART NO.	DESCRIPTION	SYMBOL
------	------	----------	-------------	--------



HOLE A - 4-40 DRILL & TAP
HOLE B - 8-32 BLIND TAP - 3/8" DEEP
HOLE C - No. 47 DRILL - 3/16" DEEP
HOLE D - 33/64 DIA.
HOLE E - 3/8 X 16 DRILL & TAP
HOLE F - 11/16 DIA.
HOLE G - 5/8 DIA. - 1 5/16 DIA. C'BORE .062" DEEP
HOLE H - 1 1/4 DIA.

COVER "B" HOLES BEFORE PAINTING



PM10079

NOTICE TO PERSONS RECEIVING THIS DRAWING
THE TECHNICAL MATERIEL CORPORATION claims proprietary right in the material disclosed hereon. This drawing is issued in confidence for engineering information only and may not be reproduced or used to manufacture anything shown hereon without permission from THE TECHNICAL MATERIEL CORPORATION to the user. This drawing is loaned for mutual assistance and is subject to recall at any time.
Property of:
THE TECHNICAL MATERIEL CORPORATION
MAMARONECK, NEW YORK

REF: CASTING CS101

TOLERANCES		SCALE:
ALL OTHERS	DEC. DIM. ± FRAC. DIM. ± ANGULAR DIM. ±	DRILL, PUNCH, COMMERCIAL STOCK SIZES AND MANUFACTURERS TOLERANCES ARE NOT INCLUDED.

VRA SPECIAL	PROJECT NO.	ASS'Y. NO.	MAY, 9, 1962
MODEL			DATE
USED ON			

STOCK SIZE		TMC (Canada) LIMITED OTTAWA ONTARIO	
MATERIAL		CASE MACHINING	
WEIGHT PER PC.		VRA-SPECIAL	
TYPE & TEMPER		JPC	
HEAT TREAT. SPEC.		DRAWN	ELC. DES. APP. MECH. DES. APP.
FINISH & SPEC. NO.		5114 & 5115	CHECKED FINAL APPROVAL
			PM10079