

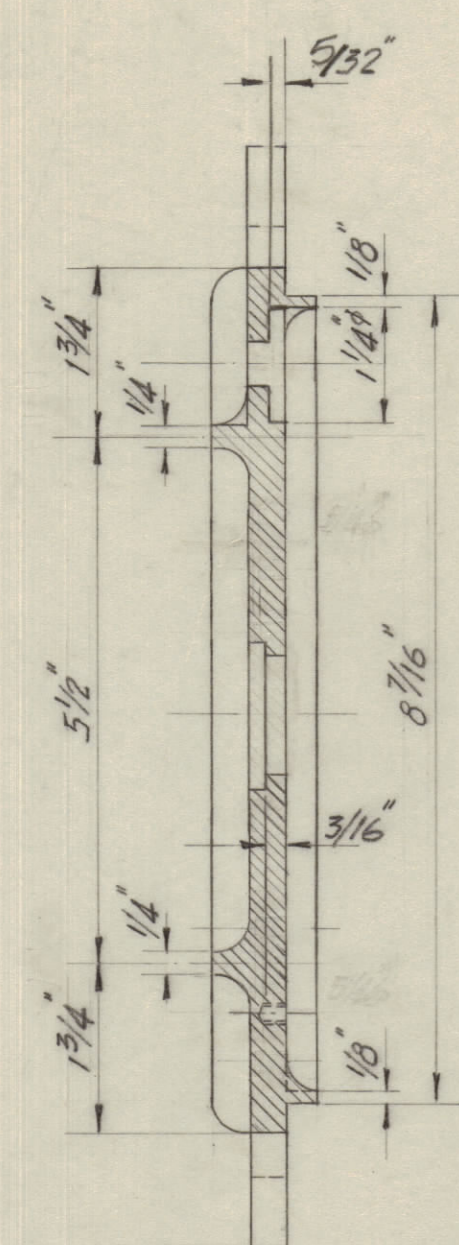
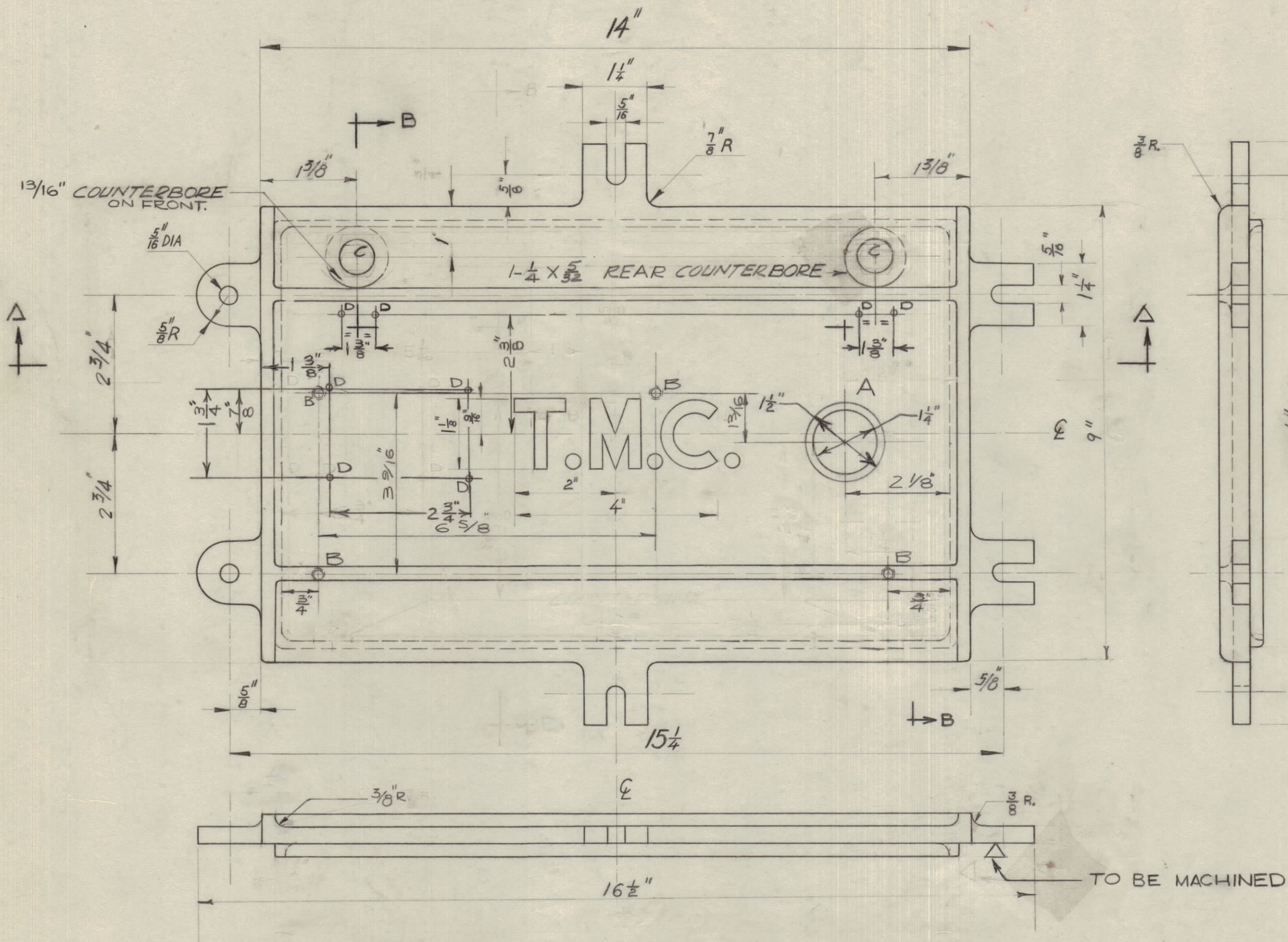
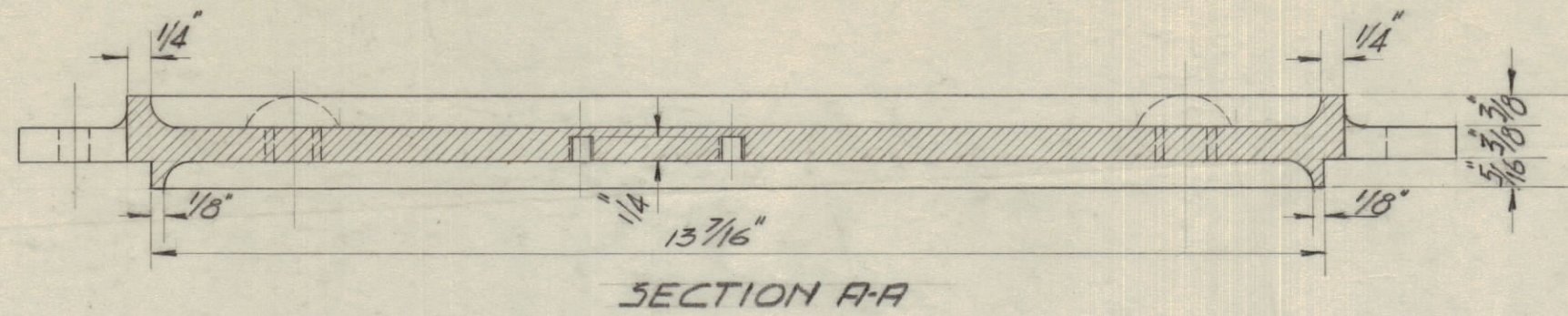
IF IT IS FOUND DESIRABLE TO CHANGE ANY TOLERANCE OR OTHER DETAIL SPECIFIED ON THIS DRAWING NOTIFY THE PURCHASER PROMPTLY.

MAXIMUM ALLOWABLE TOLERANCES HAVE BEEN DETERMINED AND DEVIATIONS WILL BE CAUSE FOR REJECTION. REMOVE ALL BURRS AND SHARP EDGES

NOTICE TO PERSONS RECEIVING THIS DRAWING

THE TECHNICAL MATERIEL CORPORATION claims proprietary right in the material disclosed hereon. This drawing is issued in confidence for engineering information only and may not be reproduced or used to manufacture anything shown hereon without permission from THE TECHNICAL MATERIEL CORPORATION to the user. This drawing is loaned for mutual assistance and is subject to recall at any time.

Property of:
THE TECHNICAL MATERIEL CORPORATION
MAMARONECK, NEW YORK



SECTION B-B

PM10076 E

- NOTE
- CASTING MUST BE FREE OF POROSITY AND SAND HOLES
 - ALL SURFACES MUST BE SMOOTH
 - SAND BLAST
 - CORNER RADIUS TO CONFORM WITH DWG CE-10002 "CASE CASTING"
 - A-A AS SHOWN C'BORE FROM FRONT 1-1/2 X 5/32
 - B- DRILL & TAP #8-32, 3/16 DEEP FROM BACK - 4 HOLES
 - C- 1/4 DRILL (2 HOLES)
 - D # 47 DRILL - 5/32 DEEP.
 - 5-101- CAUSTIC DIP
 - 3-114- ZINC CHROMATE PRIMER
 - 5-115- SMOOTH GREY ENAMEL

The contents of this drawing are the exclusive property of T.M.C. (Canada) Ltd. Its use or reproduction in whole or in part is strictly forbidden.

REF: CS-104

E	"TO BE MACHINED" ADDED	FEB 20/61	JPC				
D	"D" HOLES ADDED 4/64 D. WAS 5/8 D.	DEC 6/60	JPC				
C	CORRECTED	25-460	JPC				
B	"B" HOLES CH'D PER A-10194	13-2-59	DCM				
A	MACHINING ADDED	7-8-57	F5Z				
ISSUE	ITEM	CHANGED FROM	DATE	CN. NO.	DRAFTS	CHECKER	ENG. APP.
TOLERANCES		SCALE: NTS					
ALL OTHERS	DEC. DIM. ± FRAC. DIM. ± ANGULAR DIM. ±	DRILL, PUNCH, COMMERCIAL STOCK SIZES AND MANUFACTURERS TOLERANCES ARE NOT INCLUDED.					

BAA-1	CE-8503	A-10103-A	7-8-57
MODEL	PROJECT NO.	ASS'Y. NO.	DATE
USED ON			

REQ. ITEM	PART NO.	DESCRIPTION	SYMBOL
STOCK SIZE		TMC (Canada) LIMITED OTTAWA ONTARIO	
ALUMINIUM		COVER, CASTING	
MATERIAL	WEIGHT PER PC.	E MACHINING	
356-T6			
TYPE & TEMPER			
STRESS RELIEVED			
HEAT TREAT. SPEC.			
SEE NOTE			
FINISH & SPEC. NO.			

PM10076 E