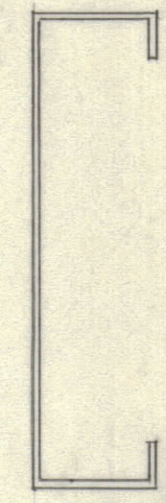
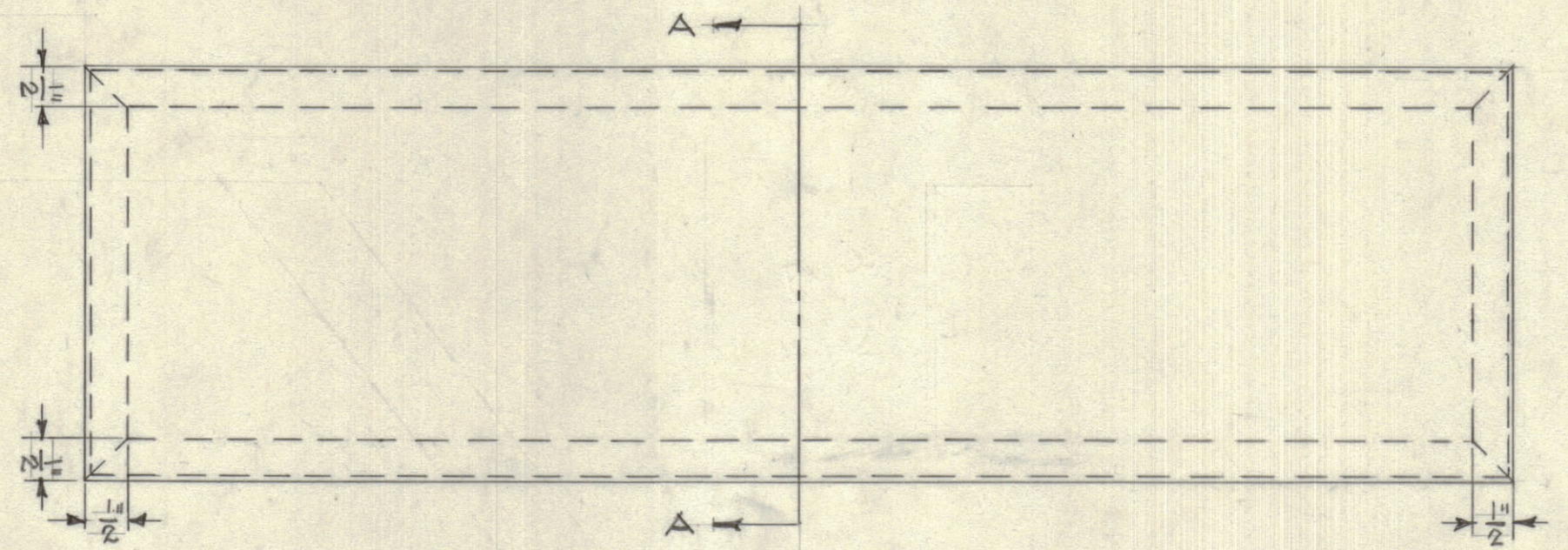


NOTICE TO PERSONS RECEIVING THIS DRAWING

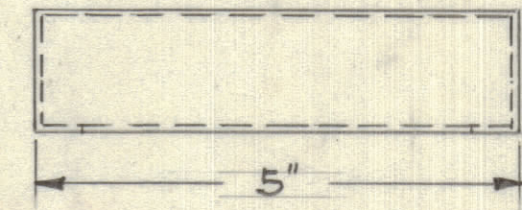
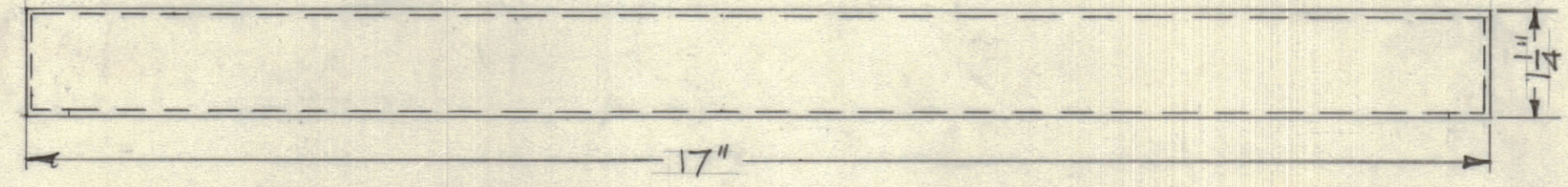
THE TECHNICAL MATERIEL CORPORATION claims proprietary right in the material disclosed hereon. This drawing is issued in confidence for engineering information only and may not be reproduced or used to manufacture anything shown hereon without permission from THE TECHNICAL MATERIEL CORPORATION to the user. This drawing is loaned for mutual assistance and is subject to recall at any time.

Property of:
THE TECHNICAL MATERIEL CORPORATION
MAMARONECK, NEW YORK

PM-10018



SECTION A-A.



JOINTS TO BE WELDED.

.051" SHEET		T.M.C. (Canada) LTD.	
STOCK SIZE		OTTAWA ONTARIO	
ALUMINUM		CHASSIS AMC. 10	
MATERIAL	WT PER PC.	POWER UNIT	
ALCAN 578-1/2 HARD		JRH. 13-1-53	
TYPE & TEMPER.		DRAWN	ELEC. DES. APP. MECH. DES. APP.
HEAT TREAT SPEC.	CHECKED.	<i>Wag</i>	
FINISH & SPEC NO.		FINAL APPROVAL.	
		PM-10018	

A.M.C.	10002	ASS'Y. NO.	DATE.
MODEL	PROJECT NO.		
USED ON			

SCALE HALF SIZE