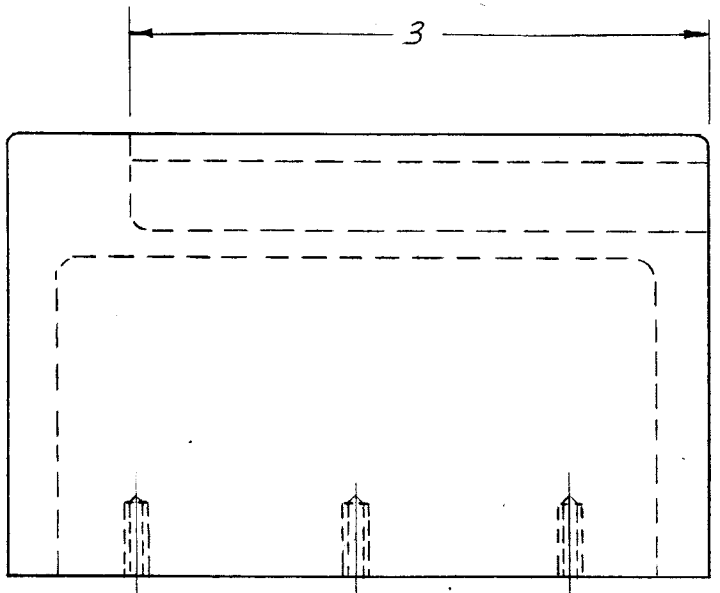


IF IT IS FOUND DESIRABLE TO CHANGE ANY TOLERANCE OR OTHER DETAIL SPECIFIED ON THIS DRAWING NOTIFY THE PURCHASER PROMPTLY.

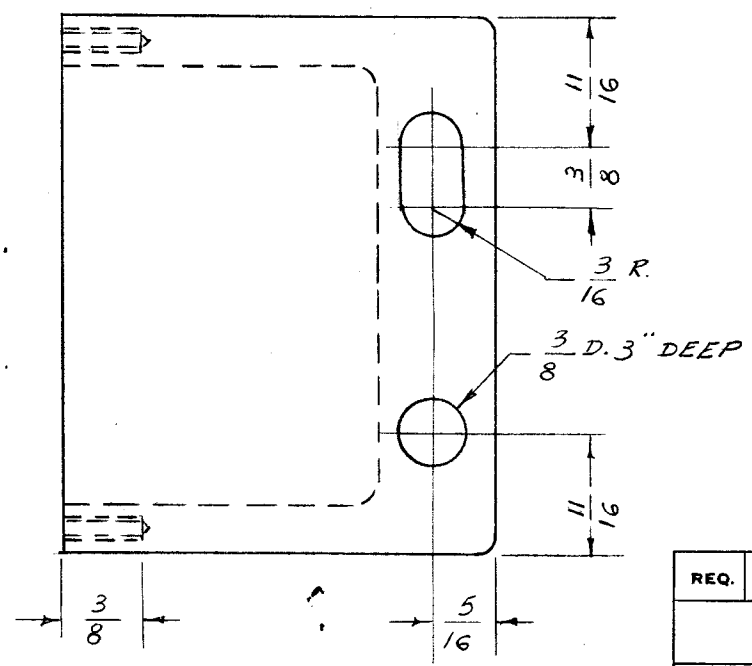
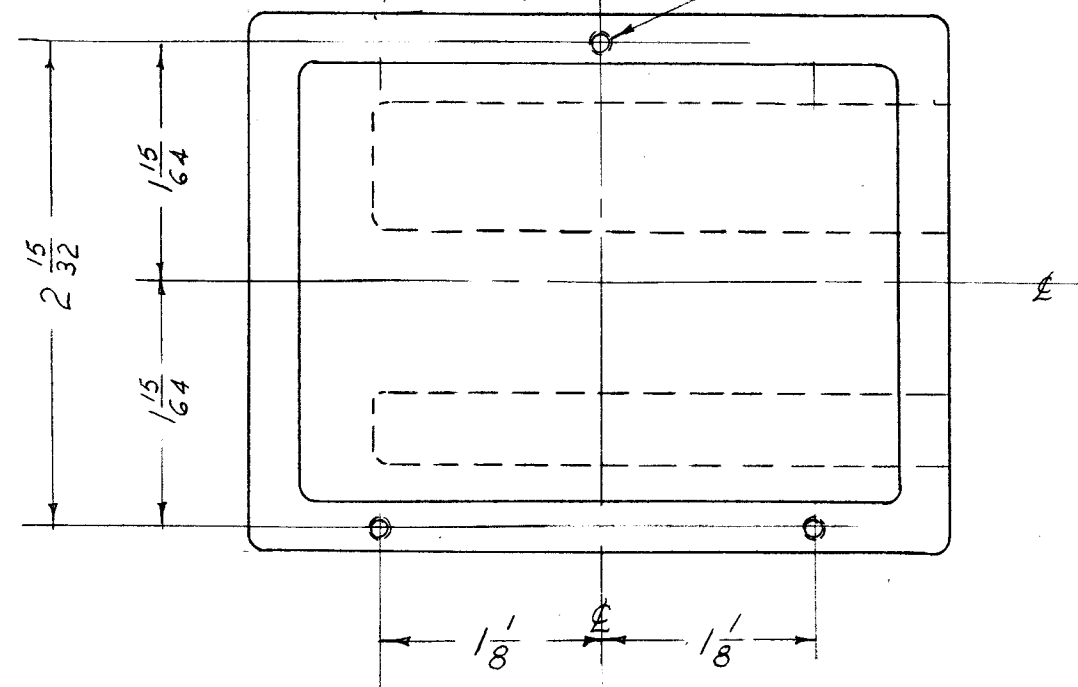
MAXIMUM ALLOWABLE TOLERANCES HAVE BEEN DETERMINED AND DEVIATIONS WILL BE CAUSE FOR REJECTION. REMOVE ALL BURRS AND SHARP EDGES

PM-188 A



NOTE:  
SLOT 3" DEEP, LENGTH 3/4"  
WIDTH 3/8"

DRILL & TAP 4-40  
3/8 DEEP, 3 HOLES



**NOTICE TO PERSONS RECEIVING THIS DRAWING**  
THE TECHNICAL MATERIEL CORPORATION claims proprietary right in the material disclosed hereon. This drawing is issued in confidence for engineering information only and may not be reproduced or used to manufacture anything shown hereon without permission from THE TECHNICAL MATERIEL CORPORATION to the user. This drawing is loaned for mutual assistance and is subject to recall at any time.

Property of:  
THE TECHNICAL MATERIEL CORPORATION  
MAMARONECK, NEW YORK

A	1	FINISH ADDED	8/10/61	5416	WA	RU	
*	1	Redrawn No Change	7/4/55	-H	HA	CDW WJC	
ISSUE	ITEM	CHANGED FROM	DATE	CN. NO.	DRAFTS	CHECKER	ENG. APP.

TOLERANCES		SCALE:	1	FSS	1 MC	3-22-55	
ALL OTHERS	DEC. DIM. ± FRAC. DIM. ± 1/64 ANGULAR DIM. ±	DRILL, PUNCH, COMMERCIAL STOCK SIZES AND MANUFACTURERS TOLERANCES ARE NOT INCLUDED.	1	XFK	200KC	5-18-51	
			REQ. PER UNIT	MODEL	PROJECT NO.	ASS'Y. NO.	DATE

1	FSS	1 MC	3-22-55	
1	XFK	200KC	5-18-51	
REQ. PER UNIT	MODEL	PROJECT NO.	ASS'Y. NO.	DATE

REQ. ITEM	PART NO.	DESCRIPTION	SYMBOL
	CS-107	THE TECHNICAL MATERIEL CORP. MAMARONECK, NEW YORK	
	STOCK SIZE	OVEN MACHINING	
	MATERIAL	WEIGHT PER PC.	
	TYPE & TEMPER	P.B. 3-22-55	WJC
	HEAT TREAT. SPEC.	DRAWN	ELEC. DES. APP. MECH. DES. APP.
	FINISH & SPEC. NO.	FINAL APPROVAL	WJC
		PM-188	A