

IF IT IS FOUND DESIRABLE TO CHANGE ANY TOLERANCE OR OTHER DETAIL SPECIFIED ON THIS DRAWING NOTIFY THE PURCHASER PROMPTLY.

RELEASED

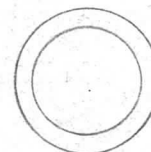
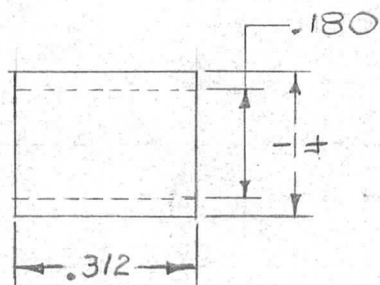
PM-170

Ø

MAXIMUM ALLOWABLE TOLERANCES HAVE BEEN DETERMINED AND DEVIATIONS WILL BE CAUSE FOR REJECTION. REMOVE ALL BURRS AND SHARP EDGES

USED ON

MODEL	PROJECT NO.	ASS'Y. NO.	DATE
CK-2	168	A-269	11-25-52



REQ.	ITEM	PART NO.	DESCRIPTION	SYMBOL
		1/4 O.D. X .180 I.D.	THE TECHNICAL MATERIEL CORP. MAMARONECK, NEW YORK	
		STOCK SIZE		
		ALUMINUM TUBING	SPACER	
		MATERIAL		
		WEIGHT PER PC.		
		615-T6		
		TYPE & TEMPER	15 11-25-52	
			DRAWN	ELEC. DES. APP. MECH. DES. APP.
			12-12-52	9/26/69
		HEAT TREAT. SPEC.	CHECKED	FINAL APPROVAL
		(S-120) BLACK ANODIZE		PM-170
		FINISH & SPEC. NO.		Ø

ISSUE	ITEM	CHANGED FROM	DATE	CN. NO.	DRAFTS	CHECKER	ENG. APP.
Ø		ORIGINAL RELEASE	9/26/69				
TOLERANCES		SCALE 3" = 1"					
ALL OTHERS	DEC. DIM. ± .005 FRAC. DIM. ± 1/64 ANGULAR DIM. ±		DRILL, PUNCH, COMMERCIAL STOCK SIZES AND MANUFACTURERS TOLERANCES ARE NOT INCLUDED.				