

IF IT IS FOUND DESIRABLE TO CHANGE ANY TOLERANCE OR OTHER DETAIL SPECIFIED ON THIS DRAWING NOTIFY THE PURCHASER PROMPTLY.

RELEASED

PM-154

MAXIMUM ALLOWABLE TOLERANCES HAVE BEEN DETERMINED AND DEVIATIONS WILL BE CAUSE FOR REJECTION. REMOVE ALL BURRS AND SHARP EDGES

USED ON

MODEL

PROJECT NO.

ASS'Y. NO.

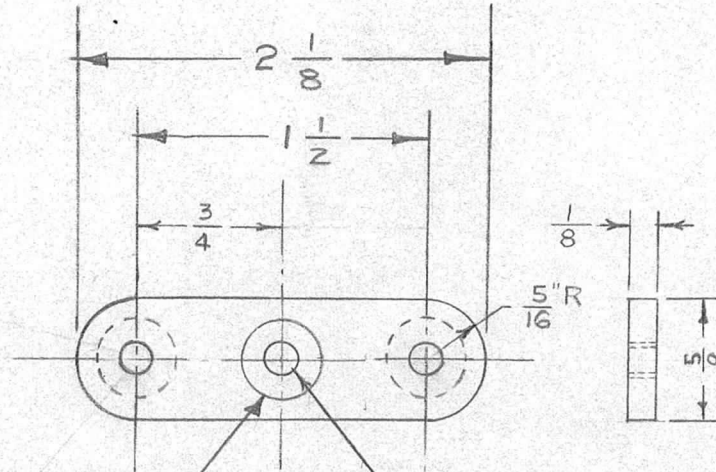
DATE

TWR-115

151

A-220

9-8-52



MASK 7/16 DIA. - CENTER HOLE ON ONE SIDE, END HOLES ON REVERSE SIDE, BEFORE PAINTING.

#9 DR: (.196) 3 HOLES

NOTE:

1. S-101 (CAUSTIC DIP)
2. S-151 (GREY WRINKLE PAINT)

REQ.	ITEM	PART NO.	DESCRIPTION	SYMBOL
		1/8 THK.	THE TECHNICAL MATERIEL CORP. MAMARONECK, NEW YORK	
		STOCK SIZE		
		ALUMINUM	TAPE GUIDE SUPPORT	
		MATERIAL		
		525-H32		
		TYPE & TEMPER		
		HEAT TREAT. SPEC.		
		FINISH & SPEC. NO.		
			DRAWN	ELEC. DES. APP.
			CHECKED	MECH. DES. APP.
			FINAL APPROVAL	
			PM-154	

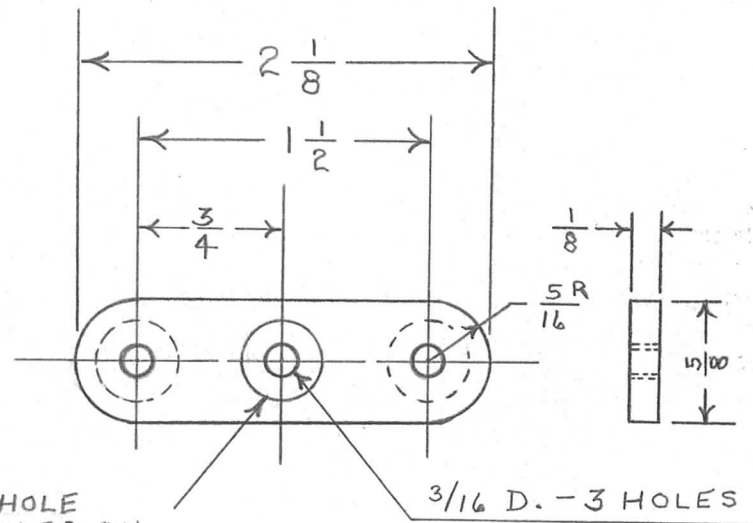
ISSUE	ITEM	CHANGED FROM	DATE	CN. NO.	DRAFTS	CHECKER	ENG. APP.
TOLERANCES				SCALE FULL SIZE			
ALL OTHERS	DEC. DIM. ±			DRILL, PUNCH, COMMERCIAL STOCK SIZES AND MANUFACTURERS TOLERANCES ARE NOT INCLUDED.			
	FRAC. DIM. ±						
	ANGULAR DIM. ±						

IF IT IS FOUND DESIRABLE TO CHANGE ANY TOLERANCE OR OTHER DETAIL SPECIFIED ON THIS DRAWING NOTIFY THE PURCHASER PROMPTLY.

PM-154

MAXIMUM ALLOWABLE TOLERANCES HAVE BEEN DETERMINED AND DEVIATIONS WILL BE CAUSE FOR REJECTION. REMOVE ALL BURRS AND SHARP EDGES

TWR-115 USED ON
 MODEL PROJECT NO. ASS'Y. NO. DATE



MASK 7/16 DIA.- CENTRE HOLE ON ONE SIDE, END HOLES ON REVERSE SIDE, BEFORE PAINTING

3/16 D. - 3 HOLES

NOTE

1. S-101 (CAUSTIC DIP)
2. S-151 (GREY WRINKLE PAINT)

REQ.	ITEM	PART NO.	DESCRIPTION	SYMBOL
		1/8 THK.	TMC (Canada) LIMITED OTTAWA ONTARIO	
		STOCK SIZE		
		ALUMINUM	TAPE GUIDE SUPPORT	
		MATERIAL	WEIGHT PER PC.	
		52S-H32	TAPE WINDING	
		TYPE & TEMPER	DR 6/5/55	
			DRAWN	ELEC. DES. APP. MECH. DES. APP.
		HEAT TREAT. SPEC.		
		SEE NOTE	CHECKED	FINAL APPROVAL
		FINISH & SPEC. NO.		PM-154

ISSUE	ITEM	CHANGED FROM	DATE	CN. NO.	DRAFTS	CHECKER	ENG. APP.
TOLERANCES				SCALE FULL SIZE			
ALL OTHERS	DEC. DIM. ± FRAC. DIM. ± 1/64 ANGULAR DIM. ±		DRILL, PUNCH, COMMERCIAL STOCK SIZES AND MANUFACTURERS TOLERANCES ARE NOT INCLUDED.				