

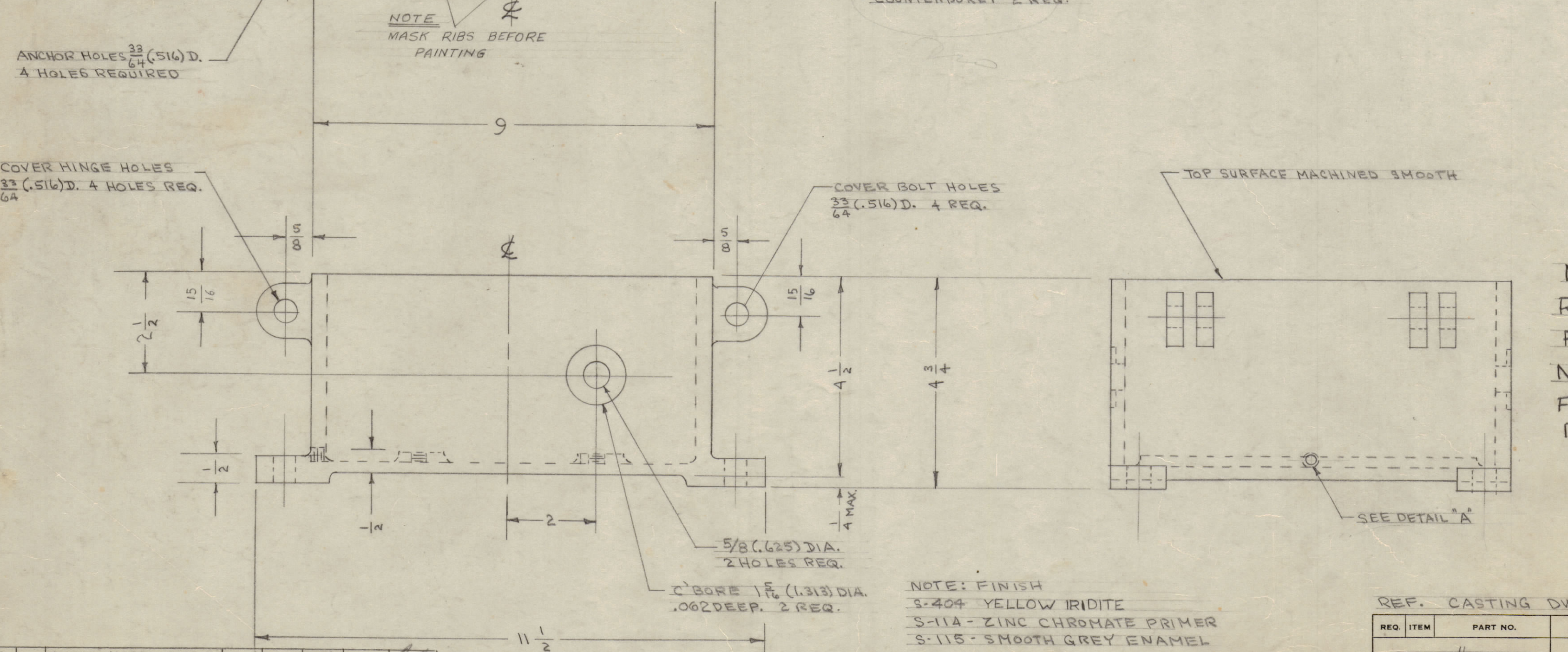
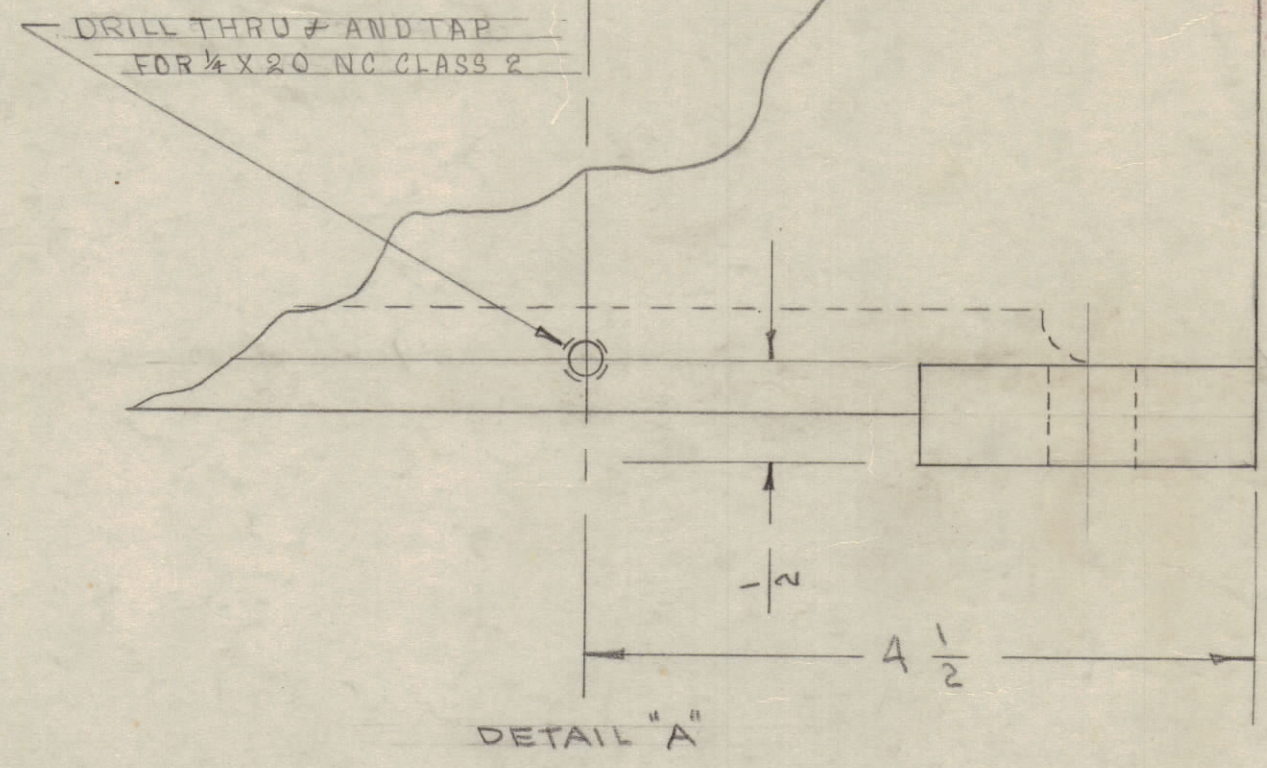
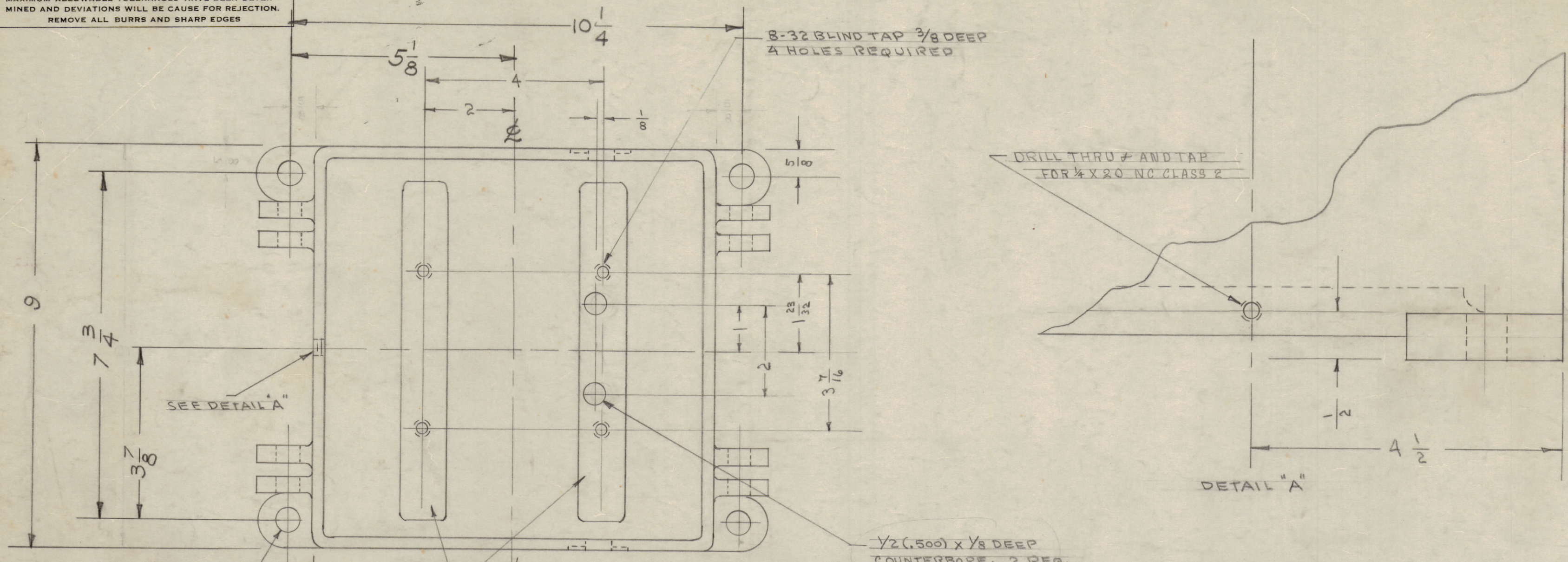
RELEASED

IF IT IS FOUND DESIRABLE TO CHANGE ANY TOLERANCE OR OTHER DETAIL SPECIFIED ON THIS DRAWING NOTIFY THE PURCHASER PROMPTLY.

MAXIMUM ALLOWABLE TOLERANCES HAVE BEEN DETERMINED AND DEVIATIONS WILL BE CAUSE FOR REJECTION. REMOVE ALL BURRS AND SHARP EDGES

NOTICE TO PERSONS RECEIVING THIS DRAWING
 THE TECHNICAL MATERIEL CORPORATION claims proprietary right in the material disclosed herein. This drawing is issued in confidence for engineering information only and may not be reproduced or used to manufacture anything shown hereon without permission from THE TECHNICAL MATERIEL CORPORATION to the user. This drawing is loaned for mutual assistance and is subject to recall at any time.

Property of:
 THE TECHNICAL MATERIEL CORPORATION
 MAMARONECK, NEW YORK



PM-122 F

NOTE:
 REPLACED BY
 PM106-2 (CS101)
 NO LONGER USED
 FOR RTB, RTB1, RTB-4
 RTB-5 & RTB-11

| ISSUE | ITEM | CHANGED FROM | DATE | CN. NO. | DRAFTS | CHECKER | ENG. APP. |
|-------|------|---|----------|---------|--------|---------|-----------|
| E | | ADDED MODEL-RTB-11 | 10-24-55 | C.C. | W.S. | J.R. | |
| D | 1 | 3 7/8 - 7 3/4 - 5 1/8 - 10 1/4 DIM. ADDED | 6-2-60 | 238A | J.P. | | |
| C | 1 | S-404 YEL IRIDITE WAS S-101 CAUSTIC DIP | 4/10/53 | 1001 | K.B. | | EMN |
| B | 1 | NOTE ADDED | 2/2/54 | Z | T.S. | | W.S. |
| A | 1 | .062 WAS .031 | 7/20/54 | 1 | W.S. | | W.S. |

| ISSUE | CHANGE FROM | DATE | CN. NO. | DRAFT | ENGR. |
|-------|-----------------|----------|---------|--------|-------|
| F | NOTE-REPL BY AD | 10-16-55 | 22109 | G.B.L. | |

| MODEL | PROJECT NO. | ASSY. NO. | DATE |
|--------|-------------|-----------|---------|
| RTB-11 | | | |
| RTB-1 | | | 9-7-55 |
| RTB | 158 | A-168 | 10-3-52 |

| REQ. ITEM | PART NO. | DESCRIPTION | SYMBOL |
|-----------|----------|--|-----------------|
| | | THE TECHNICAL MATERIEL CORP. MAMARONECK, NEW YORK | |
| | | STOCK SIZE | |
| | | ALUMINUM | CASE, MACHINING |
| | | MATERIAL | WEIGHT PER PC. |
| | | 356-T6 | |
| | | TYPE & TEMPER | CPP-10-3-52 |
| | | STRESS RELIEVED | DRAWN |
| | | HEAT TREAT. SPEC. | ELEC. DES. APP. |
| | | SEE NOTE | MECH. DES. APP. |
| | | FINISH & SPEC. NO. | CHECKED |
| | | | FINAL APPROVAL |
| | | | PM-122 F |