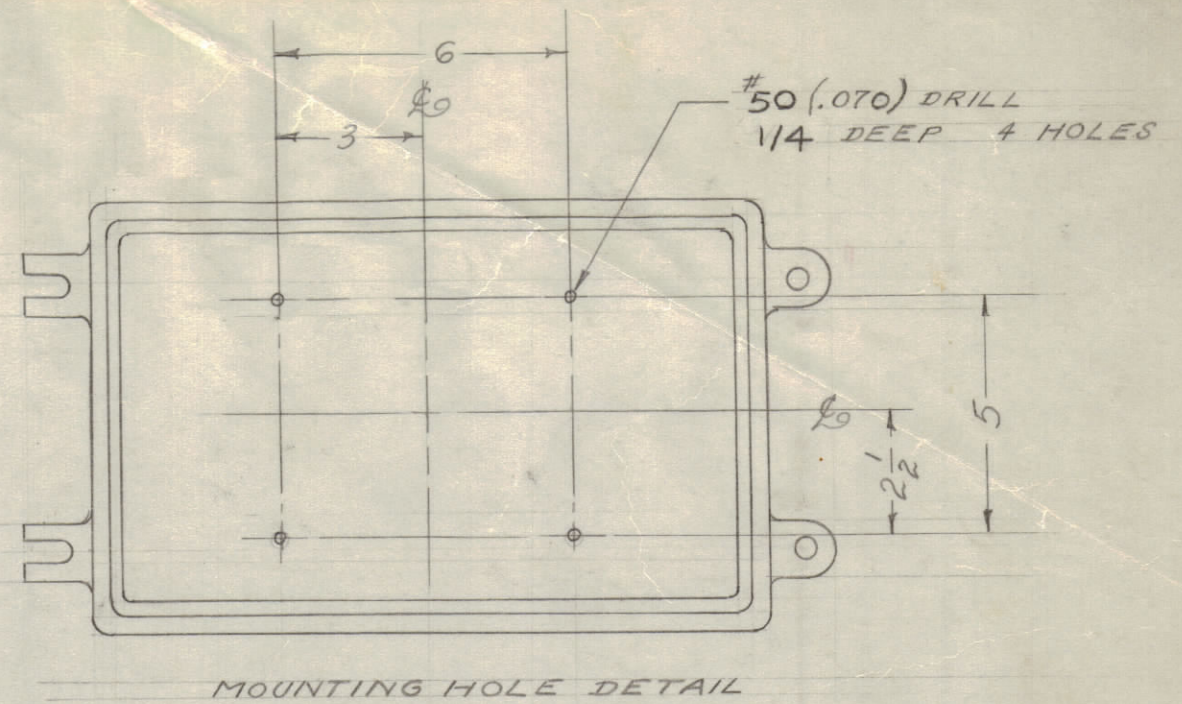
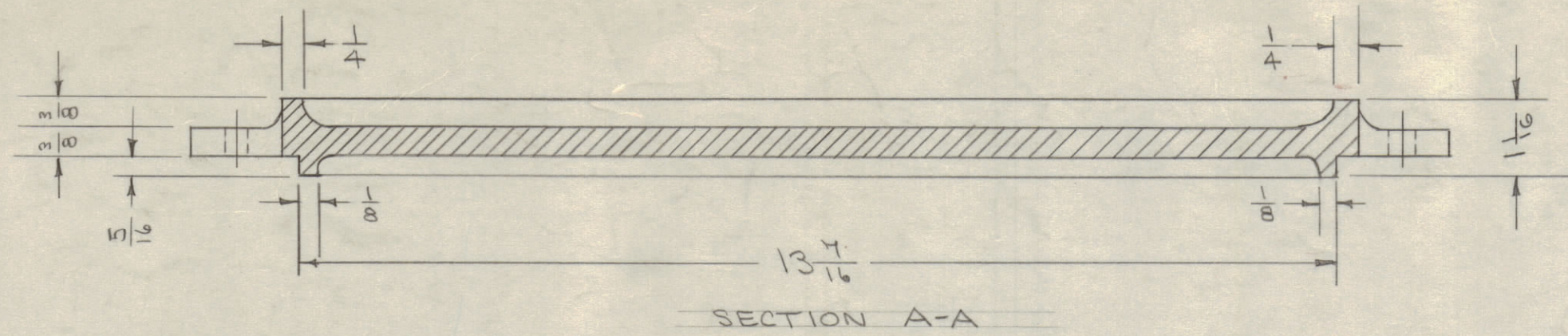
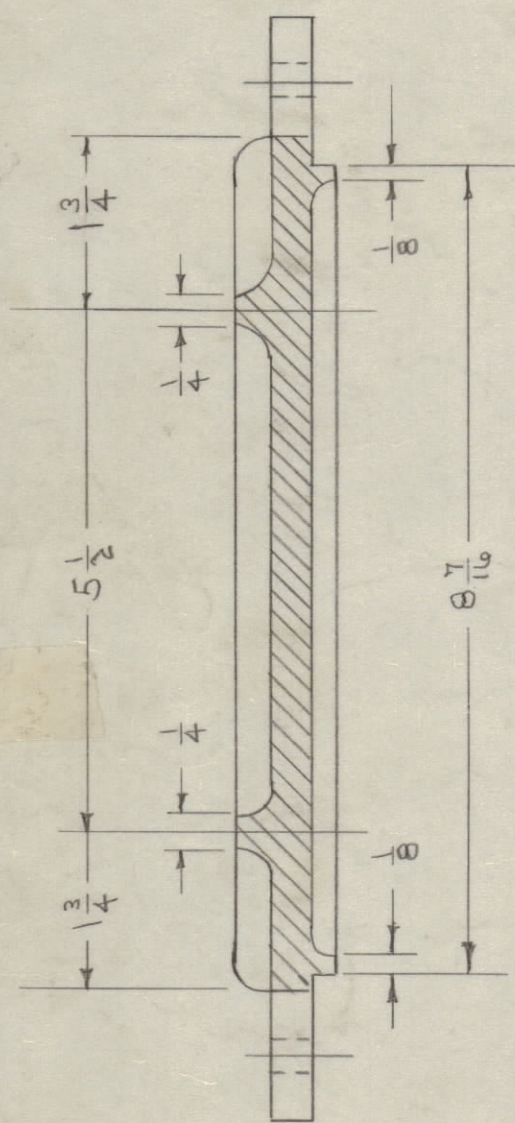


IF IT IS FOUND DESIRABLE TO CHANGE ANY TOLERANCE OR OTHER DETAIL SPECIFIED ON THIS DRAWING NOTIFY THE PURCHASER PROMPTLY.

MAXIMUM ALLOWABLE TOLERANCES HAVE BEEN DETERMINED AND DEVIATIONS WILL BE CAUSE FOR REJECTION. REMOVE ALL BURRS AND SHARP EDGES

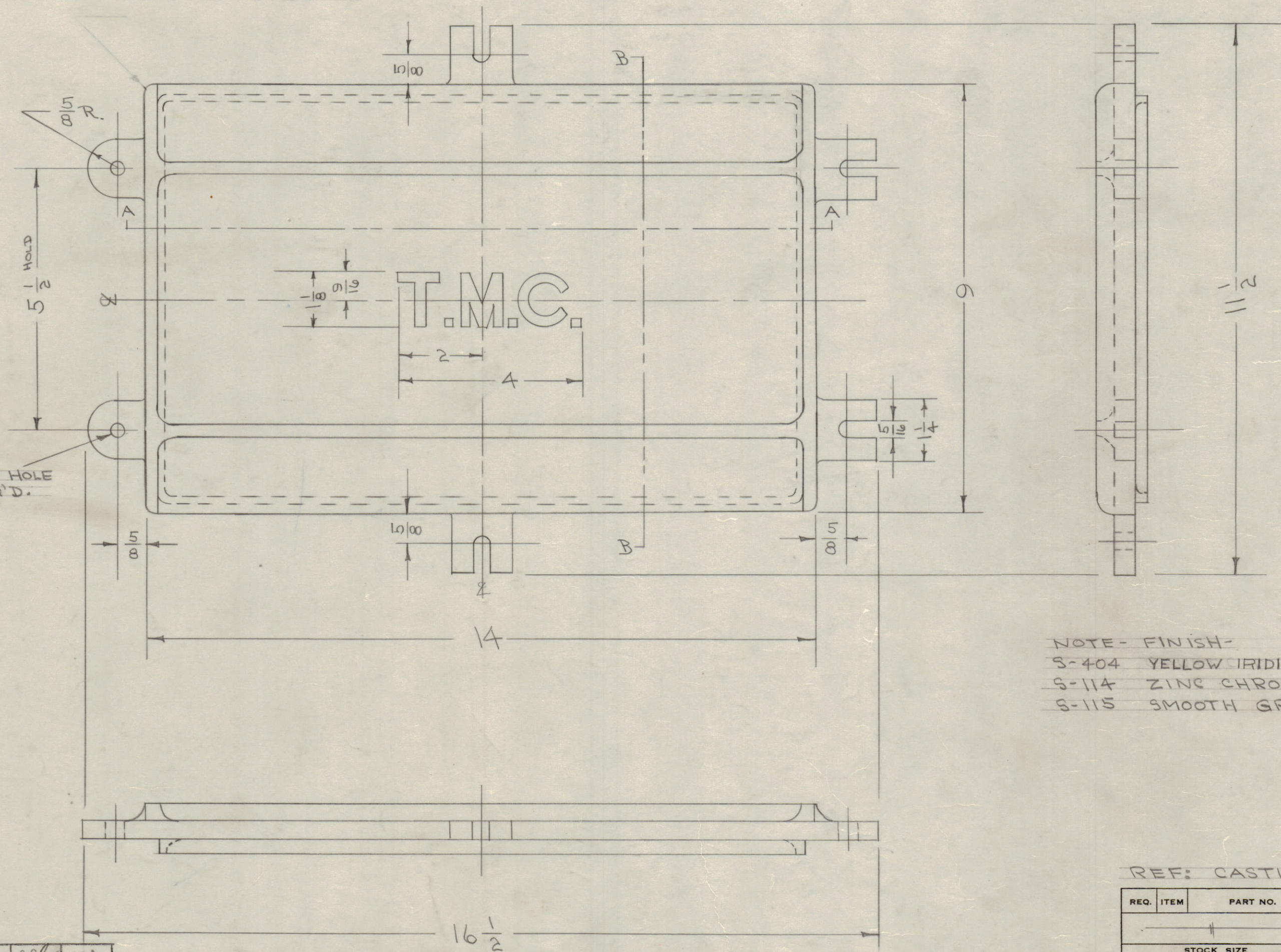


CORNER RADIUS TO CONFORM WITH CORNERS ON CASE



SECTION B-B

5/16" D. HOLE 2 REQ'D.



NOTE - FINISH -
 S-404 YELLOW IRIDITE
 S-114 ZINC CHROMATE PRIMER
 S-115 SMOOTH GREY ENAMEL

PM-114 D

REF: CASTING DWG. CS-104

D	DELE CORNER NOTE	10/6/66	16986	RME	QC	MM	
C	CHGD MOUNTING HOLE SIZE	12/1/59	1001	AB	EMN		
B	S-101 CAUSTIC DIP	9-21-53	2	PA	JAW		
A	MOUNTING HOLE DETAIL AD	9-21-53	2	PA	JAW		
	REDRAWN - NO CHANGE	4/3/53		CD	JAW	Pg	
ISSUE	ITEM	CHANGED FROM	DATE	CN. NO.	DRAFTS	CHECKER	ENG. APP.
TOLERANCES							
SCALE: #							
ALL OTHERS	DEC. DIM. ± .005 FRAC. DIM. ± 1/64 ANGULAR DIM. ±		DRILL, PUNCH, COMMERCIAL STOCK SIZES AND MANUFACTURERS TOLERANCES ARE NOT INCLUDED.				

TRC 3500-50/600			
TRC-3600		A-1203	2-10-61
BAC-2-5-1.5	230	A-526	1-9-56
BAC-2	157	A-188	10-17-52
BAC-2-S-20	108	A-107	7-17-52
MODEL	PROJECT NO.	ASS'Y. NO.	DATE
USED ON			

REQ. ITEM	PART NO.	DESCRIPTION	SYMBOL
#		THE TECHNICAL MATERIEL CORP. MAMARONECK, NEW YORK	
ALUMINUM	#	COVER, MACHINING	
MATERIAL	WEIGHT PER PC.		
356-T6			
TYPE & TEMPER		CD.D. 4-B-53	AKB
STRESS RELIEVED		DRAWN	ELEC. DES. APP.
HEAT TREAT. SPEC.		10/22/53	AKB
SEE NOTE		CHECKED	FINAL APPROVAL
FINISH & SPEC. NO.			PM-114 D