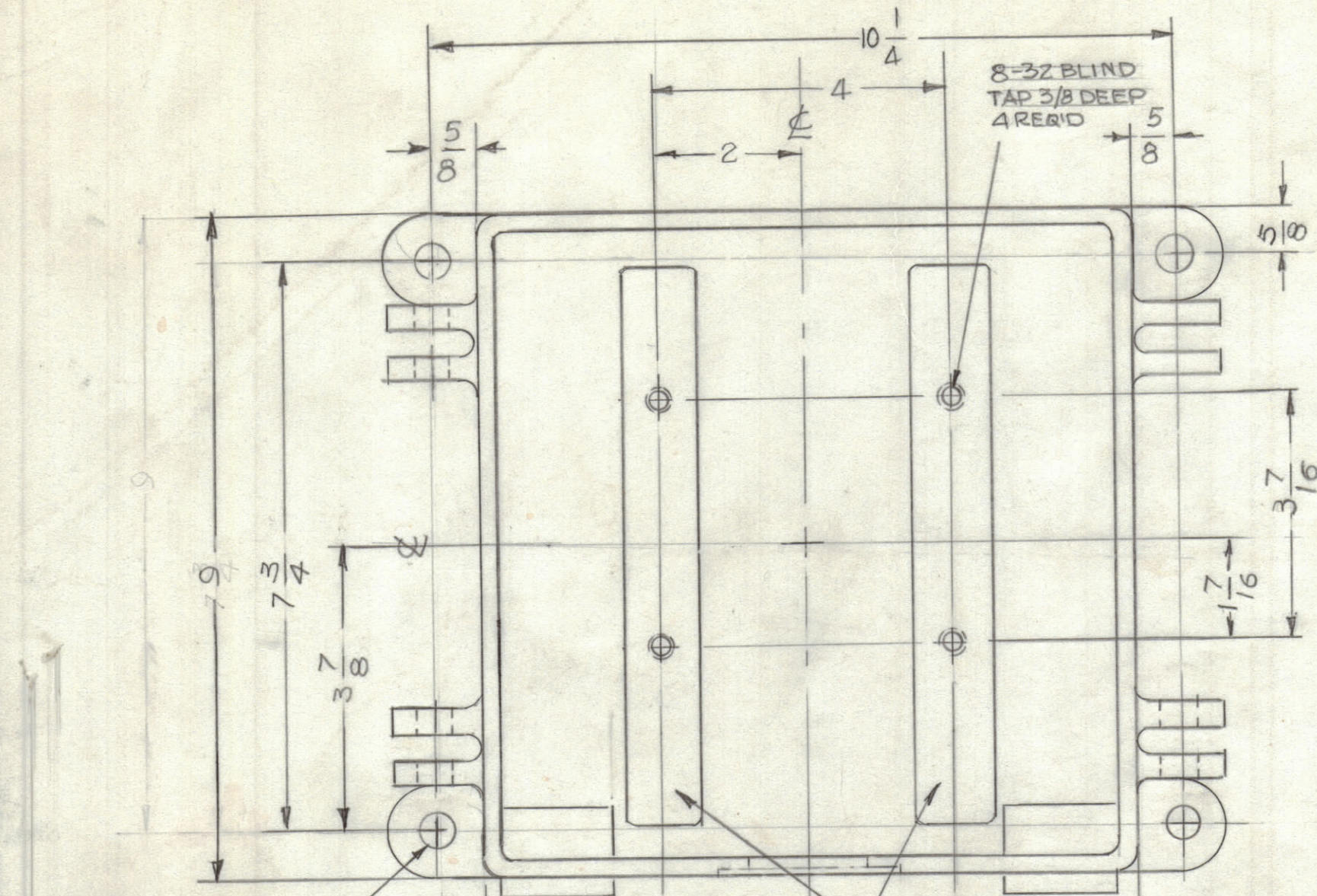
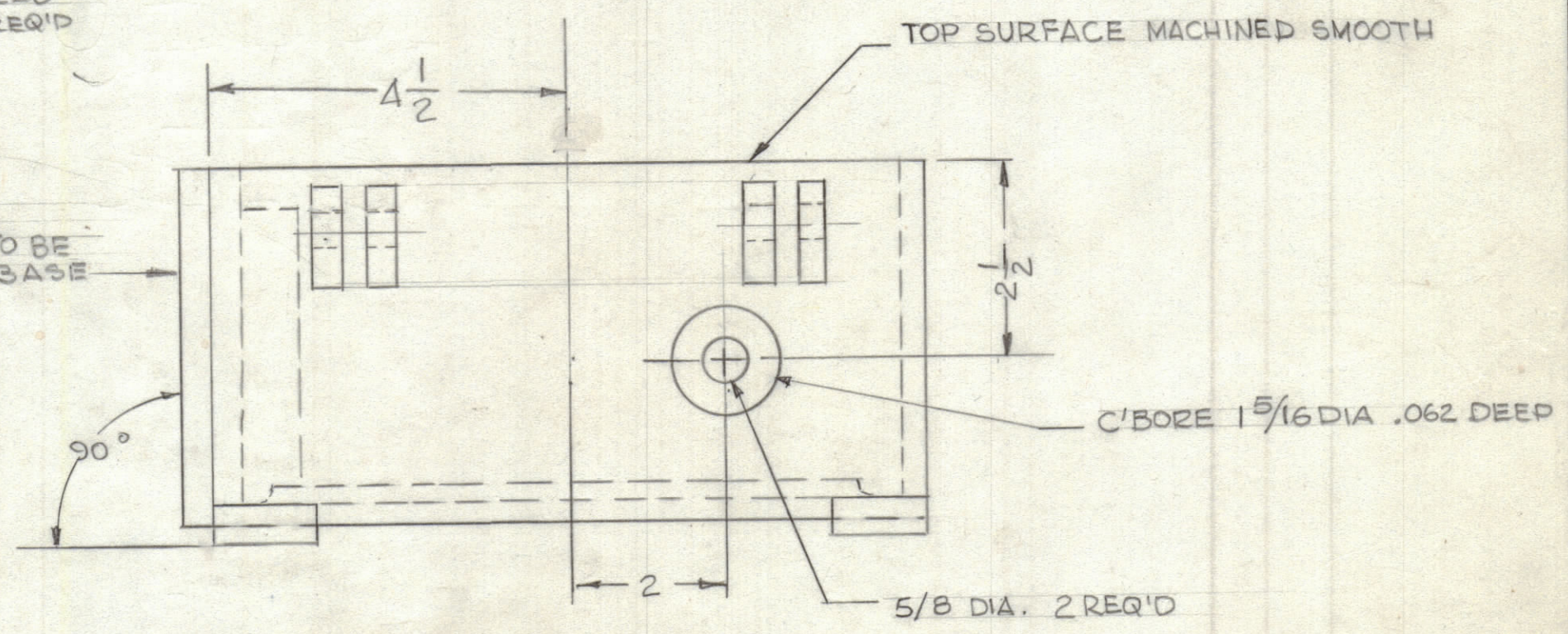
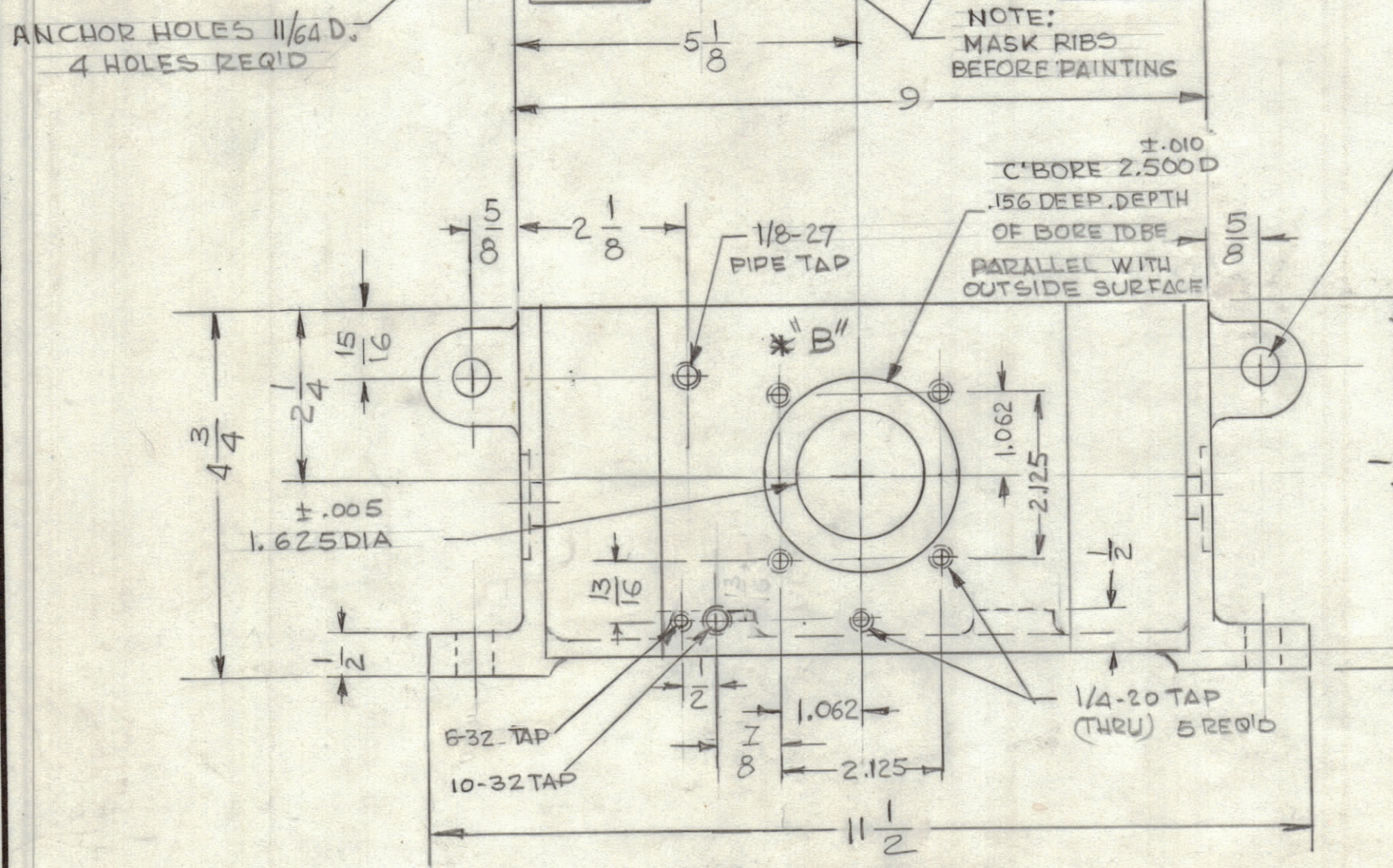


REVISIONS						
ZONE	LTR	DESCRIPTION	DATE	E.M.N.NO	DRAFT	CHKD APPD
	P	SHEET 1 OBSOLETE, SHEET 2 ADD.	7-9-91		G.D.L.	
	Q	*NOTE ADDED (DIM'S 9" ON LEFT SIDE CLAR'D)	7-28-93		G.D.L.	



* NOTE :
DO NOT USED
* DETAIL "B" FOR
PM 106-2 (RTB SERIES)



QTY/UNIT	MODEL	ASSY
	TRC-500	A 1222
	RAC-17	A 1074
	RAC-16	A 1048
	RAC-15	A 1031
	RAC-14	A 1029
	RAC-13	A 1068

QTY / UNIT	MODEL USED ON	ASS'Y NO.
	RAC-12	A 998
	RAC-10	A 745
	RAC-8	A 592
	RAC-7	A 481
	RAC-2	A 574
	BAC-1-5-13	A 525
	BAC-1	A 189
	BAC	A 101

APPLICATION

CODE

NOTICE TO PERSONS RECEIVING THIS DRAWING
THE TECHNICAL MATERIEL CORPORATION claims proprietary right in the material disclosed hereon. This drawing is issued in confidence for engineering information only and may not be reproduced or used to manufacture anything shown hereon without permission from THE TECHNICAL MATERIEL CORPORATION to the user. This drawing is loaned for mutual assistance and is subject to recall at any time.

REF: CS120

UNLESS OTHERWISE SPECIFIED DIMENSIONS ARE IN INCHES AND INCLUDE CHEMICALLY APPLIED OR PLATED FINISHES

TOLERANCES ON

DECIMALS	FRACTIONS
.X ± .05	± 1/64
.XX ± .01	ANGLES
.XXX ± .005	± 0° .30'

MATERIAL ALUM
356-T6

FINISH S404 VEL IRIDITE
S-114 ZINC CHROMATE PRIMER
S-115 SMOOTH GREY ENAMEL

QTY. REQ.	ITEM	PART NO.	DESCRIPTION	SYMBOL
LIST OF MATERIAL				
THE TECHNICAL MATERIEL CORP. MAMARONECK, NEW YORK				
CASE, MACHINING				
FINAL APPROVAL G.D.L.		DATE 7/9/92		SIZE C
MECH. DES.		DATE		
ELECT. DES.		DATE		
CHECKED		DATE		
DRAWN G.D.L.		DATE 7-9-91		CODE IDENT. NO. 82679
DWG NO. PM 106		ISSUE Q		SCALE —
SHEET 2		OF 2		