

IF IT IS FOUND DESIRABLE TO CHANGE ANY TOLERANCE OR OTHER DETAIL SPECIFIED ON THIS DRAWING NOTIFY THE PURCHASER PROMPTLY.

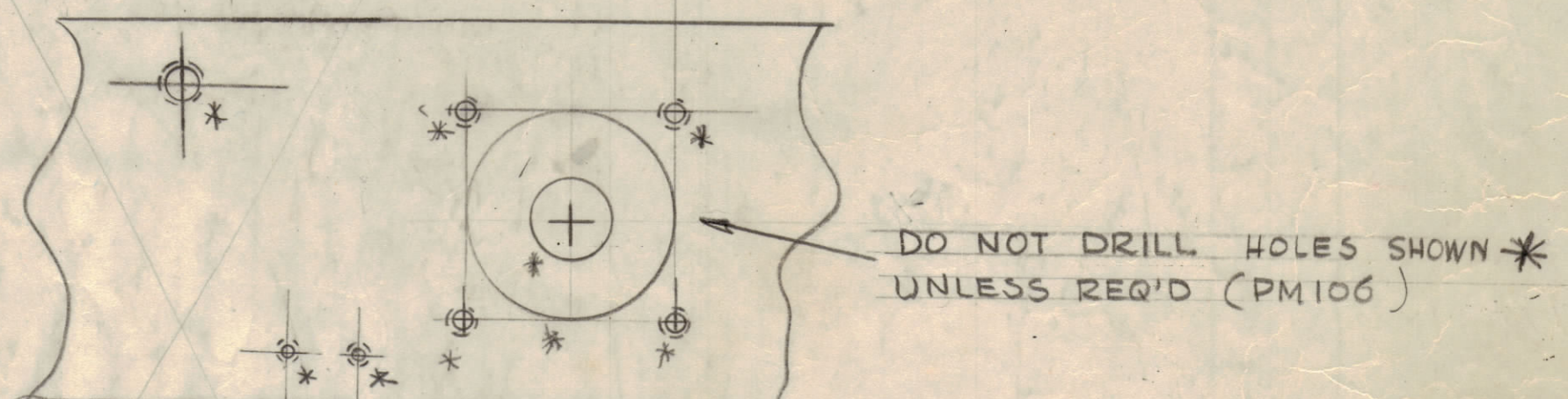
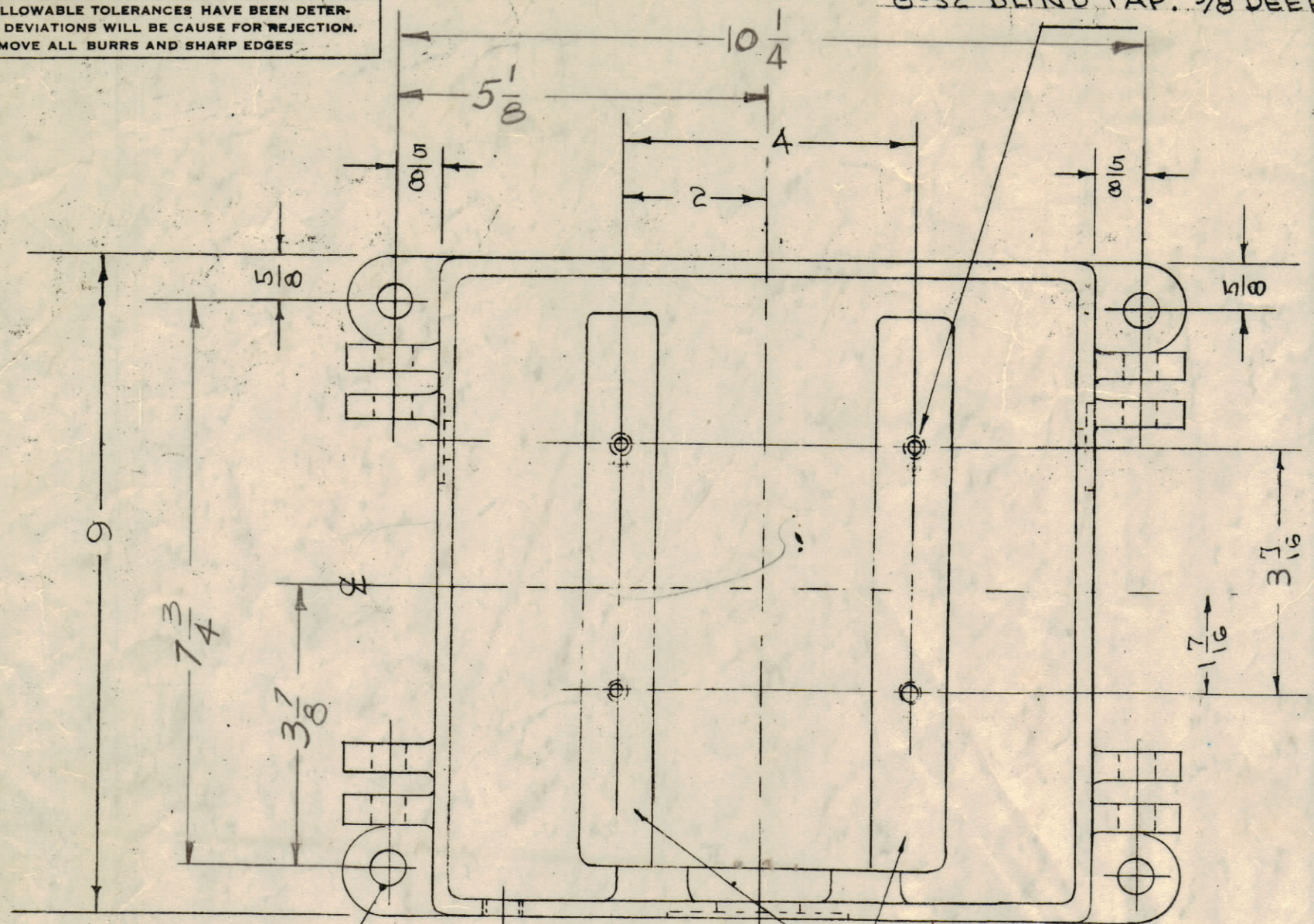
MAXIMUM ALLOWABLE TOLERANCES HAVE BEEN DETERMINED AND DEVIATIONS WILL BE CAUSE FOR REJECTION. REMOVE ALL BURRS AND SHARP EDGES

8-32 BLIND TAP, 3/8 DEEP 4 REQ'D.

| MODEL      | PROJ. | ASSY. NO | DATE |
|------------|-------|----------|------|
| RAC        |       | A-101    | 9-1  |
| BAC-1      |       | A-189    |      |
| BAC-1-S-15 |       | A-525    |      |
| RAC-2      |       | A-574    |      |
| RAC-7      |       | A-481    |      |
| RAC-8      |       | A-592    |      |
| RAC-10     |       | A-745    |      |
| RAC-12     |       | A-990    |      |
| RAC-13     |       | A-1068   |      |
| RAC-14     |       | A-1029   |      |
| RAC-15     |       | A-1031   |      |
| RAC-16     |       | A-1048   |      |
| RAC-17     |       | A-1074   |      |
| REC-506    |       | A-1222   |      |

— OBSOLETE —  
— SEE SHEET 2 —  
(USE CS120)

NOTE:  
PM 106-2 IS NOW USED FOR RTB, RTB-1, RTB4-RTB-5 & RTB-11 IT REPLACES PM 122



ANCHOR HOLES 33/64 (.515) D. 4 HOLES REQ'D.

COVER HINGE HOLES 33/64 (.515) D. 4 HOLES REQ'D.

NOTE: MASK RIBS BEFORE PAINTING.

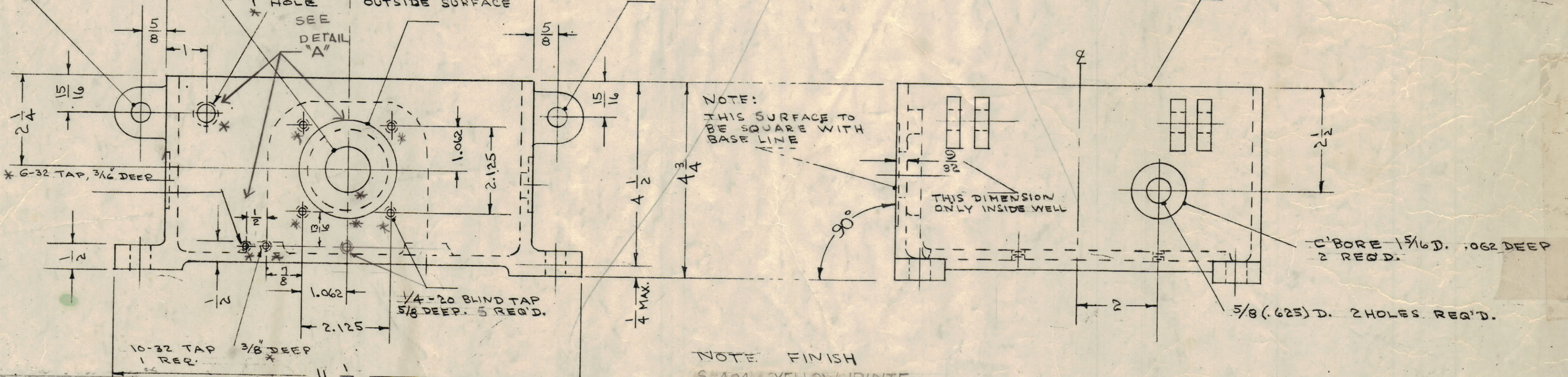
+ .005  
1.625 D.  
1/8x27 PIPE TAP  
HOLE SEE DETAIL "A"  
C-BORE 2.500 D. .156 DEEP. DEPTH OF C-BORE TO BE PARALLEL WITH OUTSIDE SURFACE

COVER BOLT HOLES 33/64 (.515) D. 4 HOLES REQ'D.

DETAIL "A"

PM-106-N

TOP SURFACE MACHINED SMOOTH



NOTE FINISH  
S-404 YELLOW IRIDITE  
S-114 ZINC CHROMATE PRIMER  
S-115 SMOOTH GREY ENAMEL

REF: CASTING DWG. CS-101

| ISSUE ITEM | CHANGED FROM                                    | DATE     | CN. NO. | DRAFTS | CHECKER | ENG. APP. |
|------------|---|----------|---------|--------|---------|-----------|
| K 1        | S-404 YEL. IRIDITE WAS S-106 CAUSTIC DIP        | 1/10/56  | 100     | AB     | JAG     | EMM       |
| I 1        | PIPE TAP WAS 3/8x16 TAP                         | 9/28/50  | 10      | ESB    | JAG     | ORR       |
| L 1        | DRAIN PLUG HOLES ADDED                          | 5/10/56  | 7       | JAG    | ORR     | WZ        |
| M 1        | NOTE ADDED                                      | 2/28/56  | 8       | JAG    | ORR     | WZ        |
| G 1        | 10-32 TAP ADDED                                 | 1/19/56  | 7       | JAG    | ORR     | WZ        |
| E 1        | 1 5/8 WAS 1 3/8                                 | 8-3-55   | 6       | PD     | JAG     | ORR       |
| F 2        | 1 5/16 C-BORE WAS .031<br>2 1/2 C-BORE WAS .062 | 10/18/54 |         | JAG    | WZ      | ORR       |
| D 1        | 1.133 WAS 1.131                                 | 4/10/53  |         | C.D.   | JAG     | ORR       |

| REV | DESCRIPTION                        | DATE     | BY | CHKD  |
|-----|------------------------------------|----------|----|-------|
| P   | NOTE "OBSOLETE SEE SH 2000-7-9-91" |          |    |       |
| N 1 | NOTE & DETAIL ADD WAS ONLY PM-106  | 10-16-85 |    | 22101 |
| M 1 | ONE 1/4-20 TAP THD HOLE ADD        | 12-26-4  |    | 6090  |
| L 1 | 1.625 Dia. W/ 1.133 Dia. ±.005     | 12-26-4  |    | 6090  |
|     | DIM. ADDED 7 3/4 - 3 3/8           | 1-6-52   |    | 2384  |
|     | 5 1/2 - 10 1/4                     | 1-6-52   |    | 2384  |

| REQ. ITEM  | PART NO.       | DESCRIPTION     | SYMBOL          |
|--|----------------|-----------------|-----------------|
| THE TECHNICAL MATERIEL CORP.<br>MAMARONECK, NEW YORK |                |                 |                 |
| ALUMINUM — CASE, MACHINING                           |                |                 |                 |
| MATERIAL   | WEIGHT PER PC. |                 |                 |
| 356-T6   |                |                 |                 |
| TYPE & TEMPER  | CDD 4-9-53     |                 |                 |
| STRESS RELIEVED                                      | DRAWN          | ELEC. DES. APP. | MECH. DES. APP. |
| HEAT TREAT. SPEC.                                    | HAD 4-22-53    |                 |                 |
| SEE NOTE   | CHECKED        | FINAL APPROVAL  |                 |
| FINISH & SPEC. NO.                                   | SEET 1 OF 2    | PM-106-N        |                 |

| MODEL | PROJECT NO. | ASSY. NO. | DATE |
|-------|-------------|-----------|------|
|       |             |           |      |