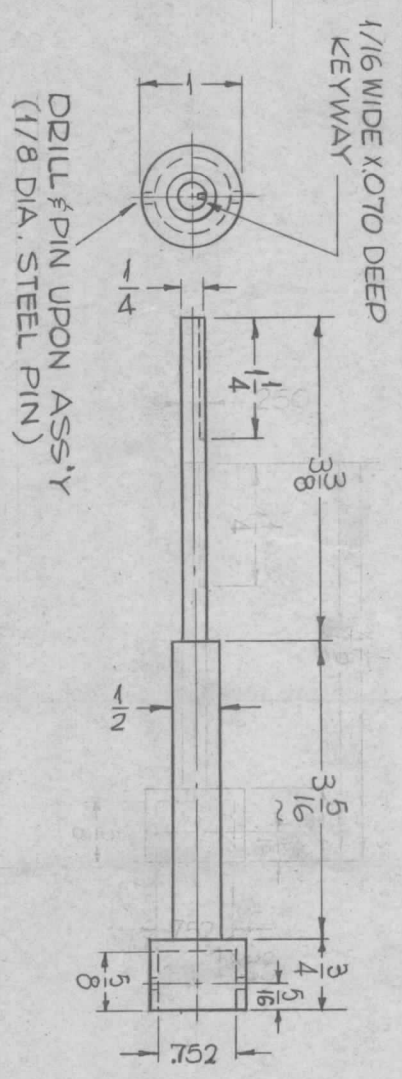
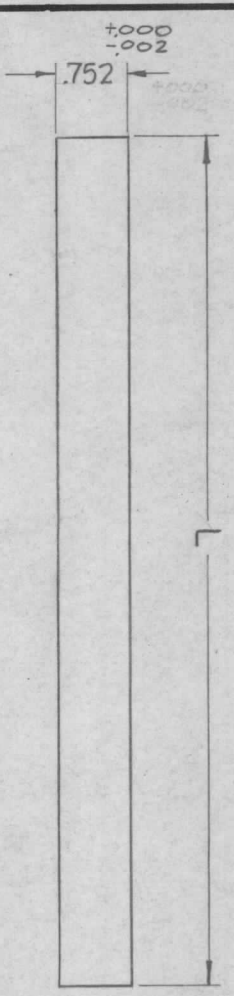


COUPLING, SHAFT NO.1
 MAT'L - STAINLESS STEEL (NON MAG.)
 FINISH - S-104 PASSIVATE,
 PM-1001 1REQ.

PM-1001



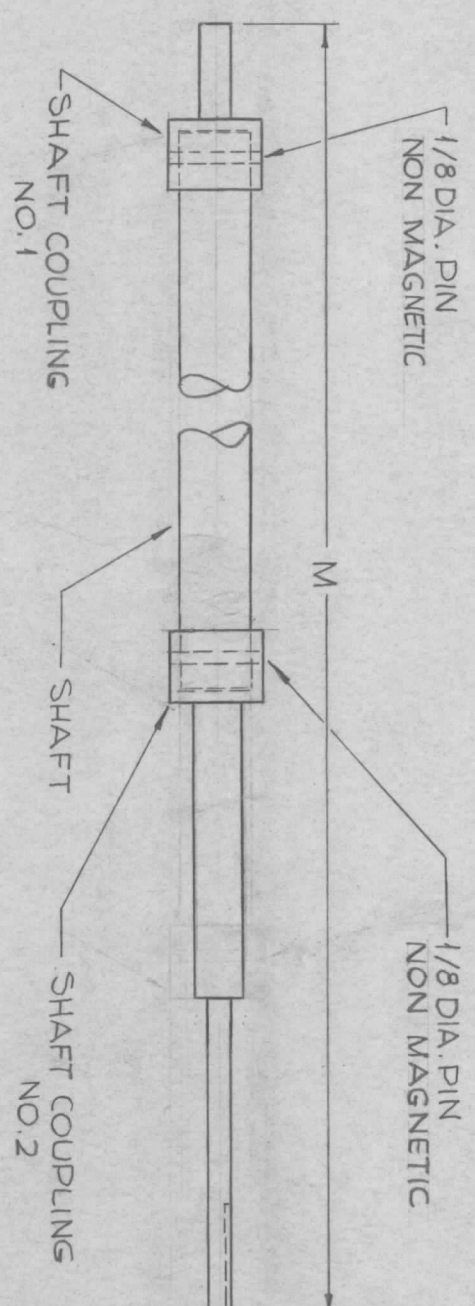
COUPLING, SHAFT NO.2
 MAT'L - STAINLESS STEEL (NON MAG.)
 FINISH - S-104 PASSIVATE,
 PM-1001 1REQ.



TMC PT. NO	L	REQ/ASSY
PM-1001-1	24-1/4	1

SHAFT
 MAT'L - SILICONE GLASS, TYPE-G-7

SYM		DESCRIPTION	DATE	E.M.N. NO.	DRAFT	CHKD	APPD
X1	REDRAWN	SHAFT NO.2 REVISED	10-23-63		SPG		
X2	GOODING	ORIGINAL RELEASE FOR PRODUCTION	10-28-63		SPG		
0			5-18-64		SPG		



FINAL ASSY

TMC PT. NO.	M	REQ/UNIT	USED ON
PM-1001-1	32-3/16	1	AX-395 (TUNE)

REQ'D.	ITEM	PART NUMBER	DESCRIPTION	SYMBOL
	F. BUDETTI		LIST OF MATERIAL	

MATERIAL	THE TECHNICAL MATERIEL CORP. MAMARONECK, NEW YORK		
FINISH	SHAFT, CAPACITOR DRIVE		

UNLESS OTHERWISE SPECIFIED DIMENSIONS ARE IN INCHES AND INCLUDE CHEMICALLY APPLIED OR PLATED FINISHES	DRAWN SPG	DATE 10-23-63	FINAL APPROVAL KRE	DATE
DECIMALS .XX ± .01 .XXX ± .005	CHECKED AA			
TOLERANCES	ELECT. DES. MECH. DES.	DATE 9/19/64	DATE	
FRACTIONS ± 1/64 ANGLES ± 0° 30'				

NOTES

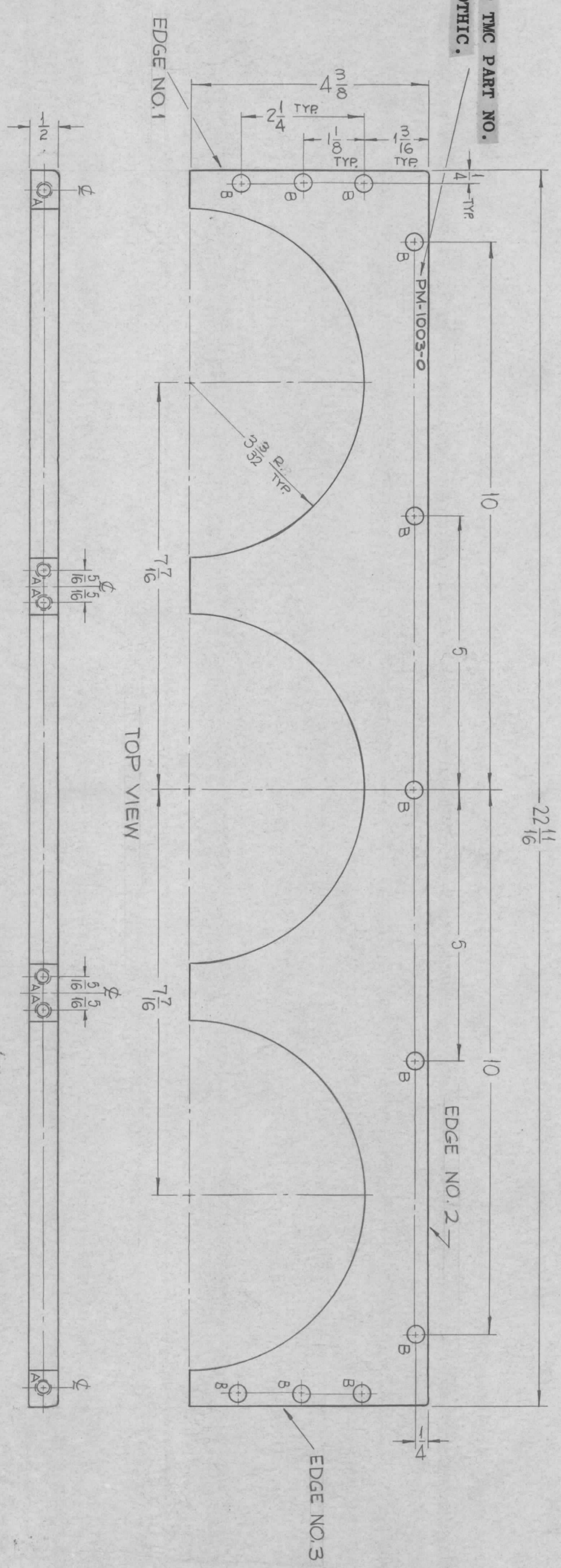
QTY./UNIT	MODEL USED ON	ASSY. NO.
SCALE 1/2" = 1"		

THE CONTENTS OF THIS DRAWING ARE THE EXCLUSIVE PROPERTY OF THE TECHNICAL MATERIEL CORP. ITS UNAUTHORIZED USE OR REPRODUCTION IN WHOLE OR IN PART IS STRICTLY FORBIDDEN.

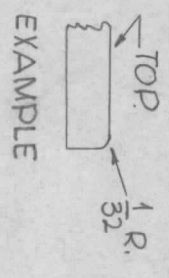
HOLES:
 A- DRILL # TAP FOR 1/4-20 X 5/8 DEEP — 6 REQ.
 B- 9/32 DIA. — 11 REQ.

REVISIONS		DATE	E.M.N. NO.	DRAFT	CHKD	APPD
0	ORIGINAL RELEASE FOR PRODUCTION	3/3/64				

METAL STAMP TMC PART NO.
 1/8 HIGH GOTHIC.



NOTE: EDGES NO.1, NO.2 AND NO.3 ARE TO BE RADIUS 1/32, ON TOP EDGES ONLY.



NOTES

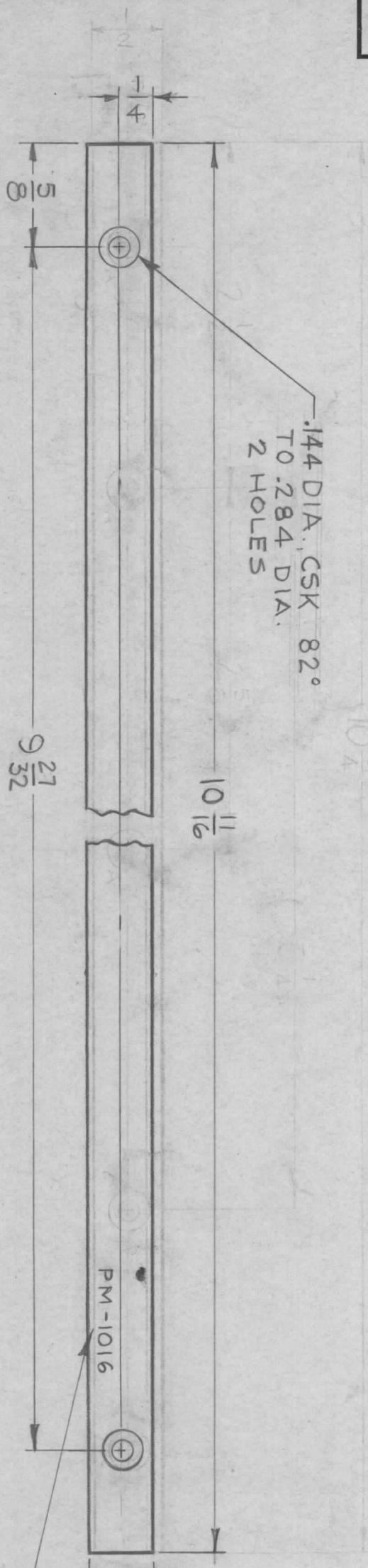
Q'TY./UNIT	MODEL USED ON	ASS'Y. NO.
1	A-32240	
SCALE	1/2" = 1"	

REQ'D. ITEM	PART NUMBER	DESCRIPTION	SYMBOL
F. BUDETTI			
MATERIAL	1/2 THICK ALUMINUM 2024-T4		
FINISH	S-245 SILVER PLATE, BRIGHT		

LIST OF MATERIAL		DESCRIPTION		SYMBOL
THE TECHNICAL MATERIEL CORP.				
MAMARONECK, NEW YORK				
TITLE	PLATE SUPPORT CAP. (3)			
DRAWN	SRG	DATE		
CHECKED	AA	DATE	3/3/64	
DESIGN	AP	DATE		
MECH. DES.	AP	DATE		
SHEET	PM-1003	REV. LTR.	0	

THE CONTENTS OF THIS DRAWING ARE THE EXCLUSIVE PROPERTY OF THE TECHNICAL MATERIEL CORP. ITS UNAUTHORIZED USE OR REPRODUCTION IN WHOLE OR IN PART IS STRICTLY FORBIDDEN.

PM-1016



.144 DIA. CSK 82°
TO .284 DIA.
2 HOLES

METAL STAMP TMC PART NO.
1/8 HIGH GOTHIC.

LEGEND	
HOLE DESCRIPTION	1/8"
SEE DETAIL	5



NOTE:
REMOVE ALL BURRS AND SHARP EDGES.

SYM	DESCRIPTION	DATE	CH. NO.	DRAFTS	CHECKER	ENG. APP.
		SCALE: 1:1				

UNLESS OTHERWISE SPECIFIED:
DIMENSIONS ARE IN INCHES
TOLERANCES ON FRACTIONS ± 1/64 DECIMALS ± .005 ANGLES ± 1/2°

MAXIMUM ALLOWABLE TOLERANCES HAVE BEEN DETERMINED AND ANY DEVIATIONS WILL BE CAUSE FOR REJECTION.
REMOVE ALL BURRS AND SHARP EDGES

REQ. PER UNIT	MNF - I	MODEL	SECTION	ASSY. NO.	DATE
2					4-22-63

USED ON

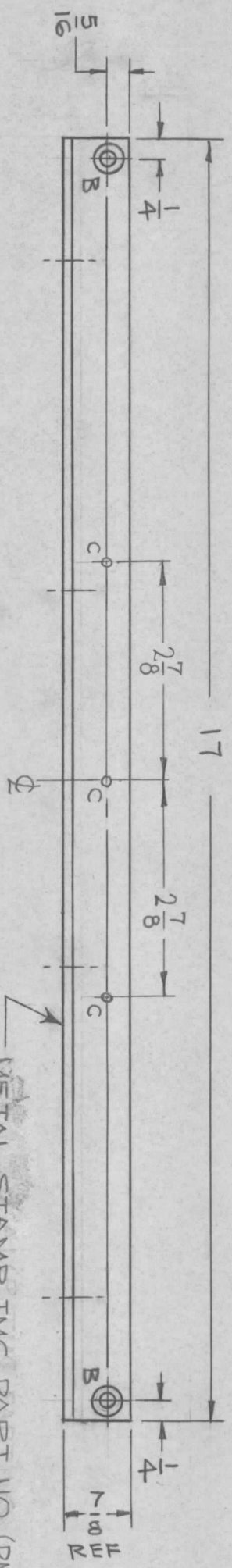
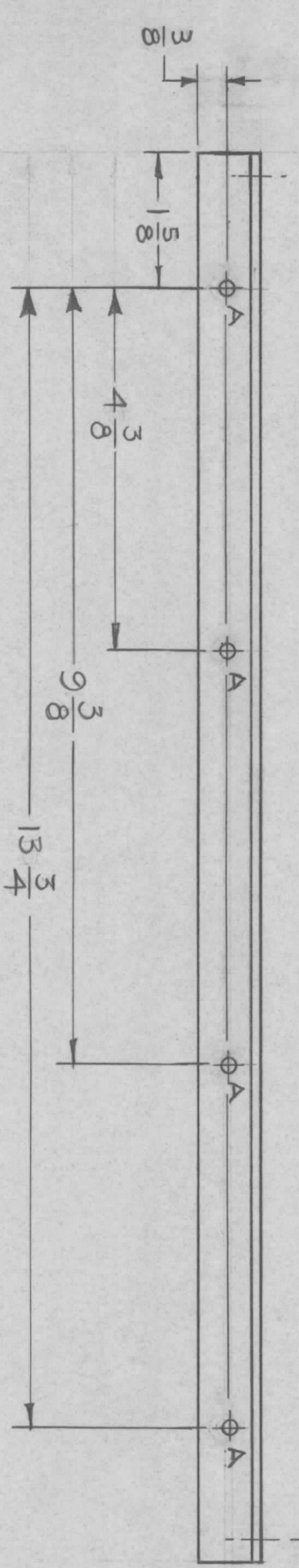
REQ. ITEM	PART NO.	AALTONEN	DESCRIPTION	SYMBOL
1/8 x 1/2 ROD, RECT.			THE TECHNICAL MATERIEL CORP. MAMARONECK, NEW YORK	
EXTRUDED ALUMINUM RECTANGULAR ROD			GUIDE, MODULE	
MATERIAL				
6063-T5	H1			
TYPE & TEMPER	HEAT TREAT. SPEC.	DRAWN	CHECKER	FINAL APPROVAL
5-404 IRIDITE (YELLOW)				PM-1016
FINISH & SPEC. NO.				
ELEC. DES. APP. MECH. DES. APP.				

HOLE	DESCRIPTION	REQ'D
A	1 1/64 DIA	4
B	DR -196 DIA & CSK 82° X .390 DIA (10-32)	2
C	SEE CHART	

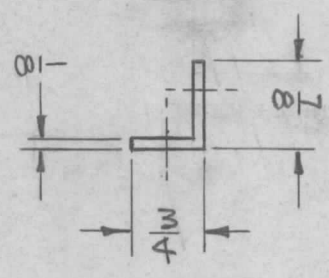
PM 1021

SYM	DESCRIPTION	DATE	E.M.N. NO.	DRAFT	CHKD	APPD
X	EXPER. RELEASE	3/9/64	1	SS		
O	ORIGINAL RELEASE FOR PRODUCTION	3-9-64	2	SS		
A	3 "C" HOLES AND CHART ADDED	7-27-64	11963	SRG		

REVISIONS



METAL STAMP TMC PART NO. (PM1021-) 1/8" HIGH GOTHIC W/LATEST REV. LETTER.



TMC P/N	"C" HOLES	QTY
PM1021-1	NONE REQ.	NONE
PM1021-2	#47 (.078) DIA.	3

1. REMOVE ALL BURRS AND SHARP EDGES.
2. FINISH; ZINC CHROMATE PRIMER PER TMC S-114, & SMOOTH GREY ENAMEL PER TMC S-115.

NOTES

QTY./UNIT	2	MODEL USED ON	LPP-4	ASS'Y. NO.	
SCALE	1:2	CODE	A		

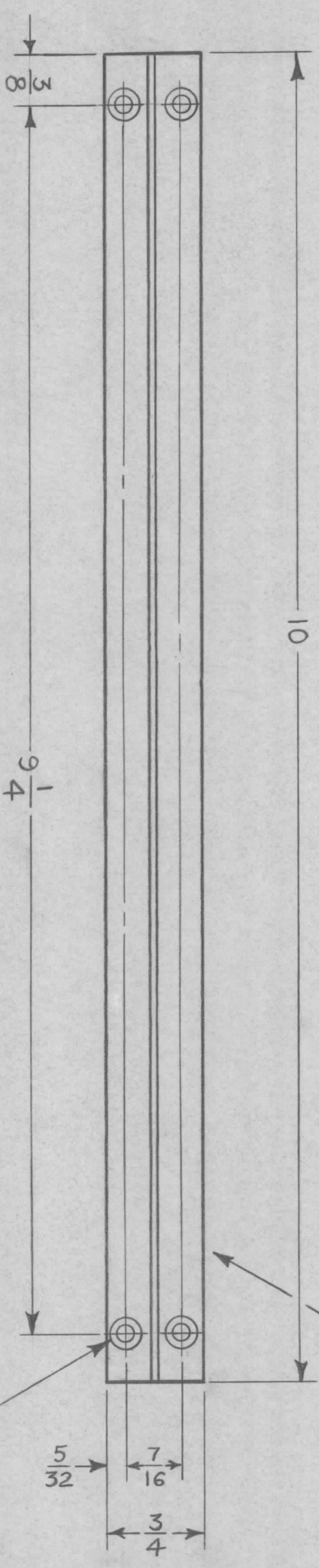
THE CONTENTS OF THIS DRAWING ARE THE EXCLUSIVE PROPERTY OF THE TECHNICAL MATERIEL CORP. ITS UNAUTHORIZED USE OR REPRODUCTION IN WHOLE OR IN PART IS STRICTLY FORBIDDEN.

REQ'D.	ITEM	PART NUMBER	DESCRIPTION	SYMBOL
	I. JOHNSON		LIST OF MATERIAL	
	MATERIAL ALCOA DIE NO. 7385 EXTR ALUMINUM 6063-T5, 3/4 x 1 x 1/8 THK		THE TECHNICAL MATERIEL CORP. MAMARONECK, NEW YORK	
	FINISH SEE NOTE 2		SUPPORT, PANEL	

DRAWN	CHECKED	ELECT. DES.	MECH. DES.	DATE	DATE	DATE	DATE
[Signature]	[Signature]	[Signature]	[Signature]	12-4-63	3-9-64	3-9-64	3-9-64

REVISIONS		DATE	E.M.N. NO.	DRAFT	CHKD	APPD
0	ORIGINAL RELEASE FOR PRODUCTION	4/24/64	0	A.M.	<i>[Signature]</i>	

PM-1024 0



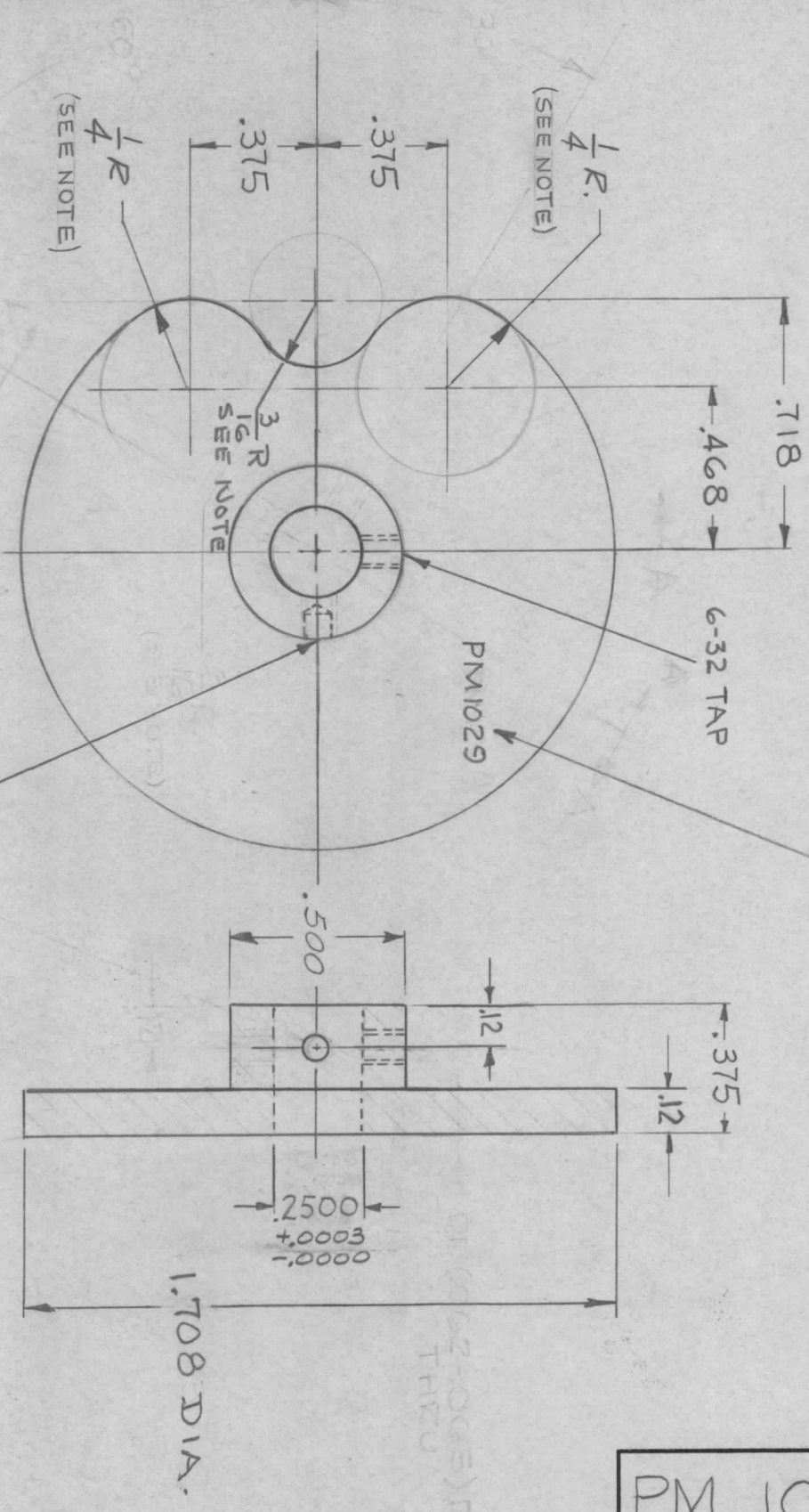
.120 DIA. HOLE CSINK 82° X .230 DIA.
(4 PLACES)

NOTE:
REMOVE ALL BURRS AND SHARP EDGES.

Q'TY./UNIT	3	MODEL USED ON	MAF-1	ASS'Y. NO.	
SCALE	1:1	CODE	A		

REQ'D.	ITEM	PART NUMBER	DESCRIPTION	SYMBOL
	AALTONEN		LIST OF MATERIAL	
MATERIAL REF: ALCOA DIE # 2012 3/4 X 1 X 1/8 " STEEL" 6063-T5 EXTRUDED ALUM.				
FINISH S404 YEL IRIDITE 14-2AL COAT				
UNLESS OTHERWISE SPECIFIED DIMENSIONS ARE IN INCHES AND INCLUDE CHEMICALLY APPLIED OR PLATED FINISHES				
DECIMALS .X ± .05 .XX ± .01 .XXX ± .005				
TOLERANCES FRACTIONS ± 1/64 ANGLES ± 0° 30'				
DRAWN		DATE	FINAL APPROVAL	DATE
CHECKED		DATE		
ELECT. DES.		DATE		
MECH. DES.		DATE		
TITLE		THE TECHNICAL MATERIEL CORP. MAMARONECK, NEW YORK		
GUIDE, MODULE "T" TYPE				
SHEET		PM-1024 0		
REV. LTR.				

METAL STAMP TMC P/NO 1/8 HIGH
GOTHIC W/LATEST REVISION LETTER



REVISIONS						
SYM	DESCRIPTION	DATE	E.M.N. NO.	DRAFT	CHKD	APPD
X1	RELOCATED 8-32 DRILL TAP HOLES	5-19-64	X1	AM		
Ø	ORIGINAL RELEASE FOR PRODUCTION	8-14-64	#	Shah		
A	8-32 HOLES DELETED, 1.708 WAS 1.7083 PICTORIAL CLARIFIED	11/3/64	12851	MD		
B	ADDED .12 DIM. ADDED 6/32 TAPPED HOLE. ADDED #50 (.070) DR.	9-26-66	16886	RME		

DETENT DATA	
OD DIA	1.7083
BORE	.2500
HOLE DIA	.500

NOTE:
ALL RADII DIMENSIONS MUST RESULT INTO A SMOOTH SURFACE

NOTES

1	HERR-2	A3533
	HER-2	A3548
QTY./UNIT	MODEL USED ON	ASSY. NO.
SCALE	CODE	
2:1	A	

REQ'D.	ITEM	PART NUMBER	DESCRIPTION	SYMBOL
	T.KROY		LIST OF MATERIAL	
	MATERIAL		THE TECHNICAL MATERIEL CORP.	
	STAINLESS STEEL		MAMARONECK, NEW YORK	
	# 303			
	FINISH		DETENT	
	S104 PASSIVATE			

UNLESS OTHERWISE SPECIFIED DIMENSIONS ARE IN INCHES AND INCLUDE CHEMICALLY APPLIED OR PLATED FINISHES

DECIMALS: .X ± .05
.XX ± .01
.XXX ± .005

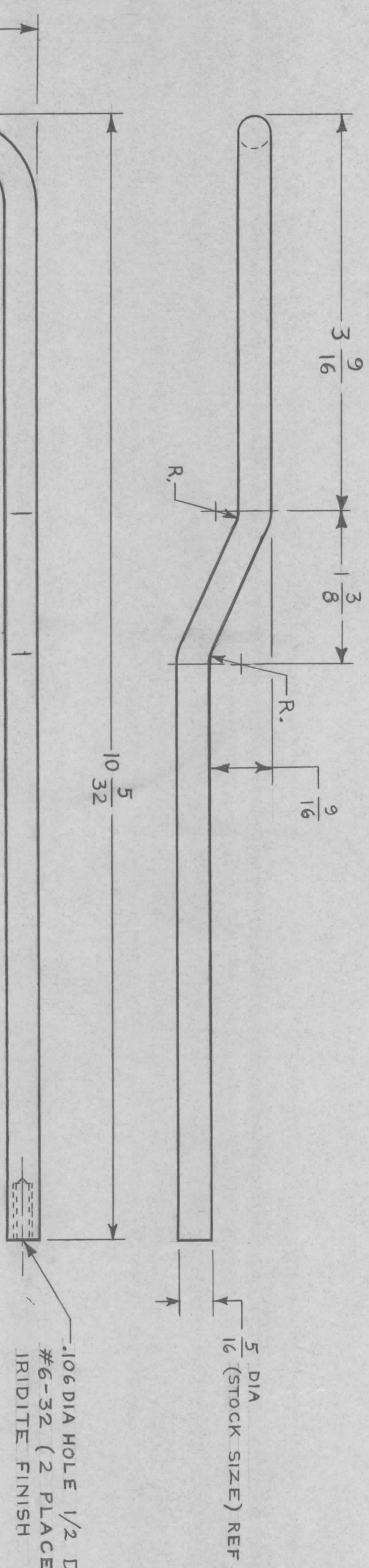
FRACTIONS: ± 1/64 ANGLES ± 0° 30'

DRAWN	DATE	FINAL APPROVAL	DATE
MECH. DES.	DATE		
DATE	DATE		
DATE	DATE		
DATE	DATE		

SYM	DESCRIPTION	DATE	E.M.N. NO.	DRAFT	CHKD	APPD

PM-1032

REVISIONS



REC'D.	ITEM	PART NUMBER	DESCRIPTION	SYMBOL
	T. AALTONEN		LIST OF MATERIAL	
	MATERIAL	5/16 DIA. 1100-H18 (2S HARD) ALUMINUM WIRE	THE TECHNICAL MATERIEL CORP. MAMARONECK, NEW YORK	
	FINISH	S 404 IRIDITE 14 2 AL COAT	HANDLE, GUARD	

DECIMALS	TOLERANCES	FRACTIONS
X ± .05		± 1/64
.XX ± .01		ANGLES
.XXX ± .005		± 0° 30'

DRAWN	CHECKED	ELECT. DES.	MECH. DES.	DATE	DATE	DATE	DATE	FINISH APPROVAL	DATE
<i>R. Roten</i>	<i>A. J. ...</i>	<i>A. J. ...</i>	<i>A. J. ...</i>	2-13-64	2-15-64	2-15-64	2-15-64	<i>R. Roten</i>	2/21/64

QTY./UNIT	MODEL USED ON	ASSY. NO.
1	MNF-1	

SCALE
1:1

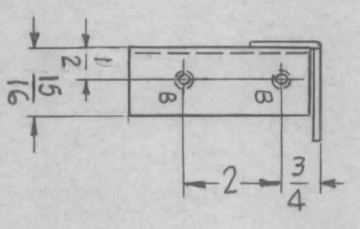
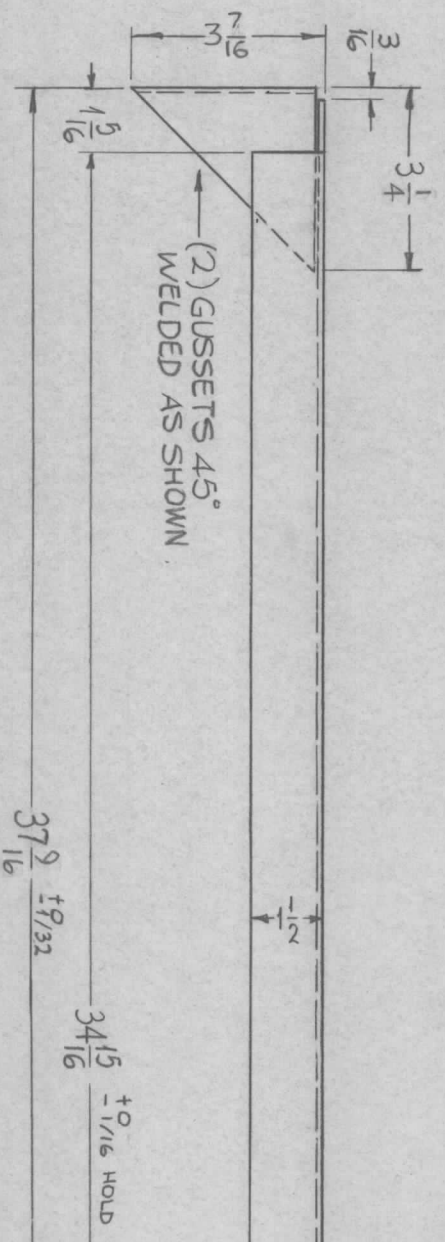
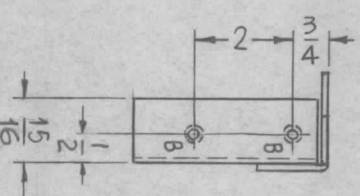
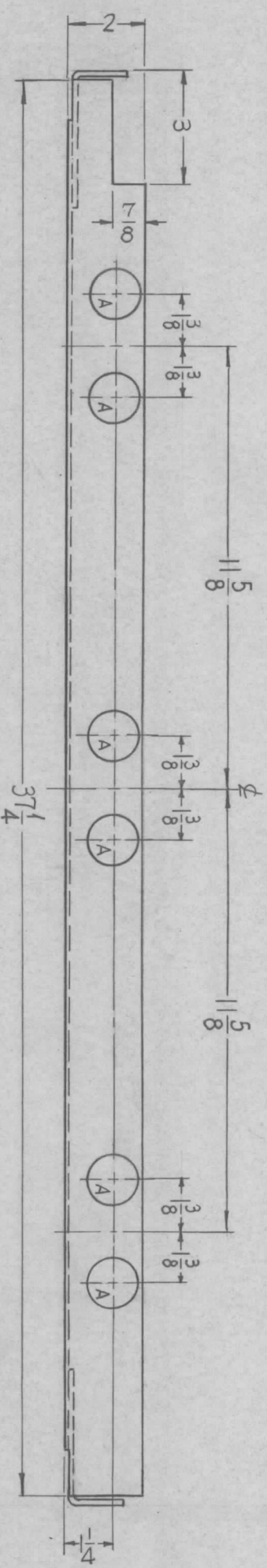
CODE
A

NOTES

THE CONTENTS OF THIS DRAWING ARE THE EXCLUSIVE PROPERTY OF THE TECHNICAL MATERIEL CORP. ITS UNAUTHORIZED USE OR REPRODUCTION IN WHOLE OR IN PART IS STRICTLY FORBIDDEN.

- UNLESS OTHERWISE SPECIFIED:
1. USE MATERIAL THICKNESS FOR MAXIMUM RADIUS ON ALL BENDS.
 2. ALL ANGULAR BENDS 90°.
 3. REMOVE ALL BURRS AND SHARP EDGES.

REVISIONS		DATE	EM.N. NO.	DRAFT	CHKD	APPD
0	ORIGINAL RELEASED FOR PRODUCTION	3.5.64		MSB		
A	DIM. 3/4 WAS 35/8 (2 PL.), 37/16 WAS 4, 15/16 WAS 15/16	5.14.64	11390	MSB	MSB	
B	DIM. 1/2 WAS 9/16 (2 PL.); 37-9/16 WAS 37-5/8.	3.23.65	13755	MSB	MSB	



REF. LD-1465

REQ'D.	ITEM	PART NUMBER	DESCRIPTION	SYMBOL
	F. BUDETTI		LIST OF MATERIAL	

MATERIAL		TITLE	
1-1/2 X 2 X 3/16 #	STEEL	SUPPORT TRANSFORMERS P.S. FRAME	
FINISH		COPPER FLASHED	

UNLESS OTHERWISE SPECIFIED		DIMENSIONS ARE IN INCHES AND INCLUDE CHEMICALLY APPLIED OR PLATED FINISHES	
DECIMALS	TOLERANCES	FRACTIONS	ANGLES
.X ± .05		± 1/64	± 0° 30'
.XX ± .01			
.XXX ± .005			

HOLES: REQ.
 A - 1-1/4 DIA. — 6
 B - 1/4-20 TAP — 4

QTY./UNIT	MODEL USED ON	ASSY. NO.
1	GPT-40K	AP-118
SCALE	CODE	
1/4" = 1"	A	

NOTES

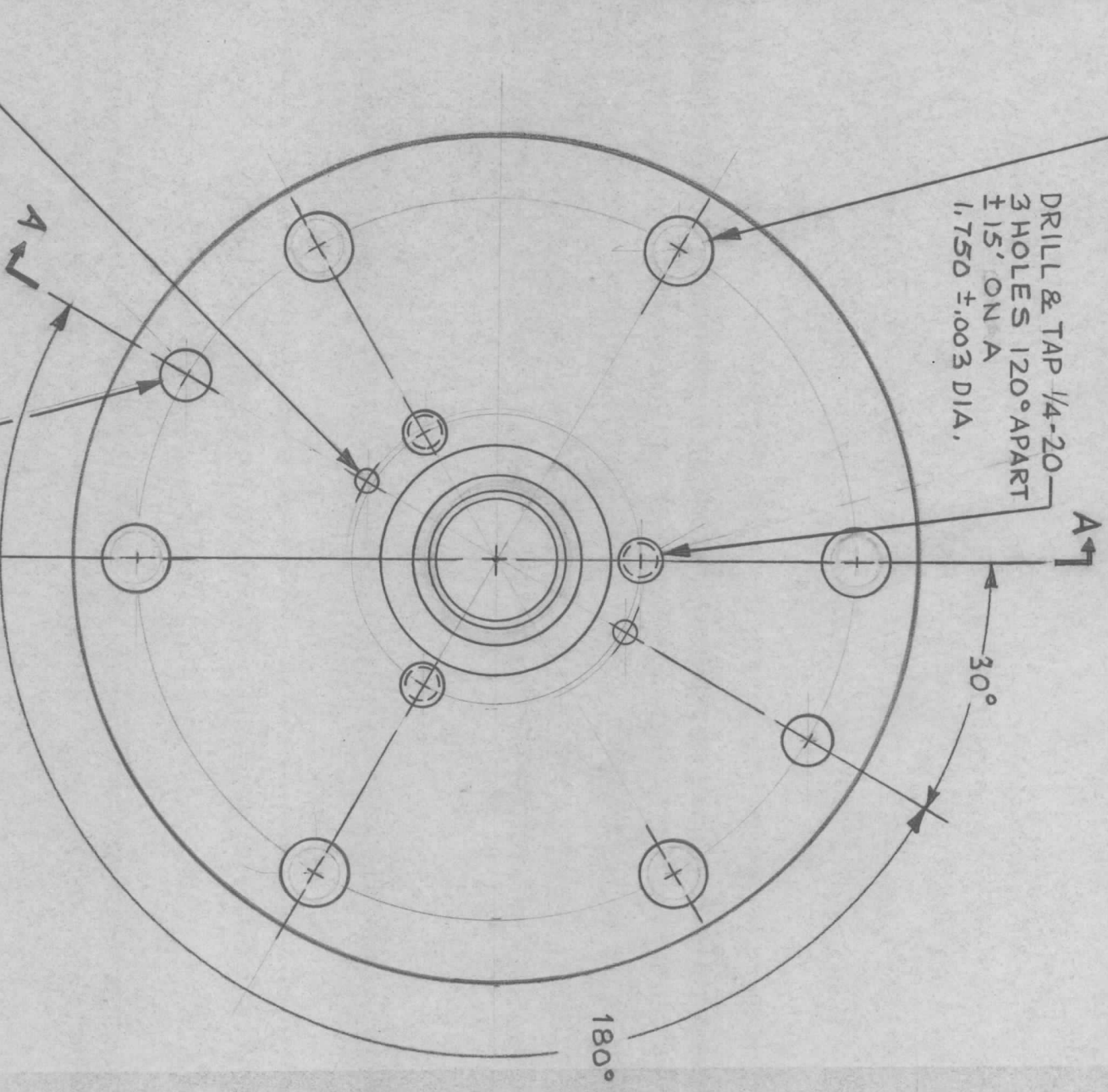
THE CONTENTS OF THIS DRAWING ARE THE EXCLUSIVE PROPERTY OF THE TECHNICAL MATERIEL CORP. ITS UNAUTHORIZED USE OR REPRODUCTION IN WHOLE OR IN PART IS STRICTLY FORBIDDEN.

REVISIONS

SYM	DESCRIPTION	DATE	EM.N. NO.	DRAFT	CHKD	APPD
0	ORIGINAL RELEASE FOR PRODUCTION	3/3/64	1	SP		

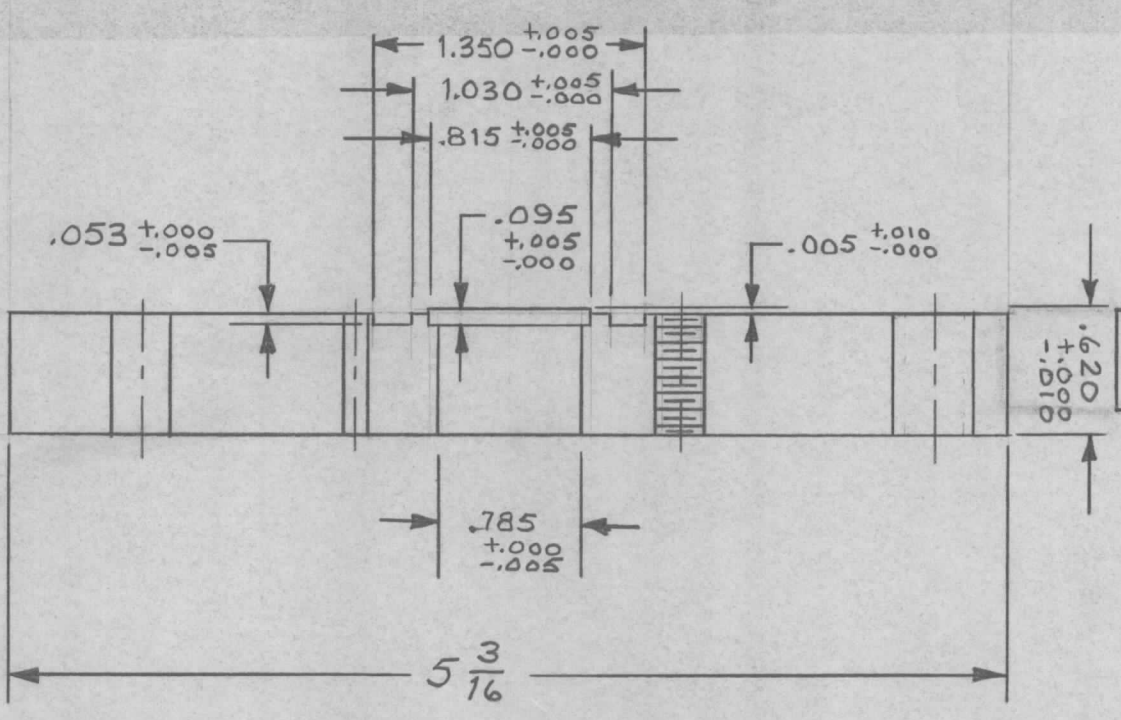
406 DIA. DRILL - 6 HOLES
EQUAL SPACED 60° APART
± 1/5" NOT CUMULATIVE
ON A 4.375 ± .005 DIA

DRILL & TAP 1/4-20
3 HOLES 120° APART
± 1/5" ON A
1.750 ± .003 DIA.



.129 ^{+0.004}/_{-0.000} DIA. DRILL
ON A 1.812 ± .003 DIA.
2 REQ. 180° APART

.253 ^{+0.004}/_{-0.000} DIA. DRILL
ON A 4.375 ± .003 DIA.
2 REQ. 180° DIA.



SECTION A-A

NOTES

- All diameters to be concentric within .005 except Stock Size Q.D.
- All inner and outer surfaces shall be as free as possible from detrimental holes, burrs, die marks, chatter marks, or foreign material.
- Metal Stamp TMC Part No. 1/8 high Gothic on Outer Diameter.

LIST OF MATERIAL

REQ'D.	ITEM	PART NUMBER	DESCRIPTION	SYMBOL
	MARTINENGO		THE TECHNICAL MATERIEL CORP. MAMARONECK, NEW YORK	
	MATERIAL		BRASS - 1/2 HARD	
	FINISH		Brass, Bright TMC-S-425	
			Iridite	

QTY./UNIT	AX 452-	MODEL USED ON	ASSY. NO.
SCALE	#	CODE	A

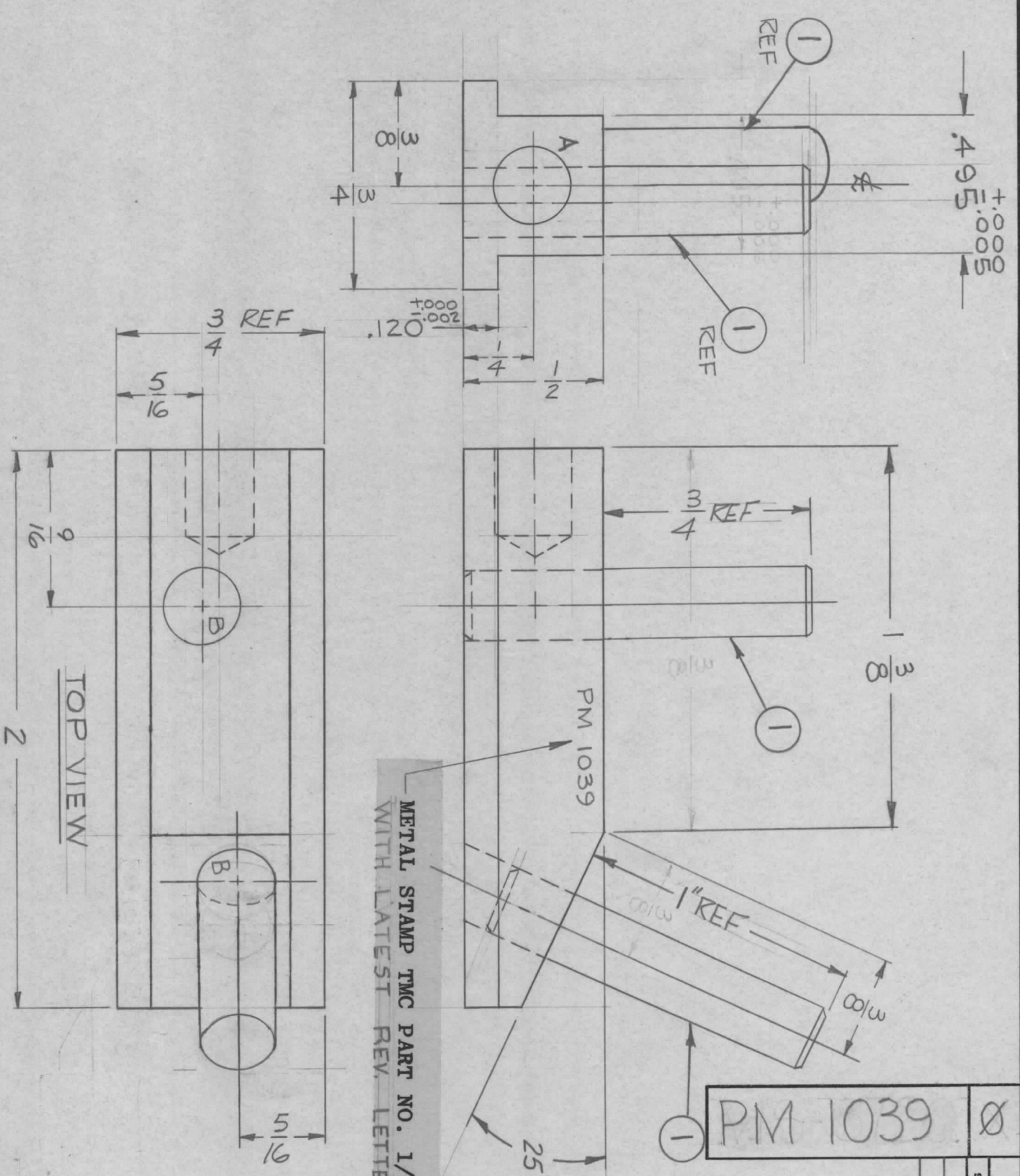
UNLESS OTHERWISE SPECIFIED DIMENSIONS ARE IN INCHES AND INCLUDE CHEMICALLY APPLIED OR PLATED FINISHES			
DECIMALS	TOLERANCES	FRACTIONS	ANGLES
.X ± .05		± 1/64	
.XX ± .01		± 30'	
.XXX ± .005			

TITLE	PLATE, ADAPTER CONNECTOR	DATE	3/3/64
DRAWN	M. TAVITILLO	DATE	2-26-64
CHECKED	SPB	DATE	2-16-64
ELECT. DES.		DATE	
MECH. DES.	SPB	DATE	2-26-64
FINAL APPROVAL	SPB	DATE	3/3/64
SHEET	PM-1035	REV. LTR.	0

NOTES

THE CONTENTS OF THIS DRAWING ARE THE EXCLUSIVE PROPERTY OF THE TECHNICAL MATERIEL CORP. ITS UNAUTHORIZED USE OR REPRODUCTION IN WHOLE OR IN PART IS STRICTLY FORBIDDEN.

REVISIONS					
SYM	DESCRIPTION	DATE	E.M.N. NO.	DRAFT	CHKD
X	EXPERIMENTAL RELEASE	3-6-64	11	AD	
Ø	ORIGINAL RELEASE FOR PRODUCTION	9-14-64	Ø	22	



HOLE LEGEND			
HOLE	DESCRIPTION	REQD	
A	17/64 DIA X 5/16 DP.	1	
B	.2500 ±.0004 DIA DRILL THRU	2	

NOTE:

REMOVE ALL BURRS & SHARP EDGES.

Q'TY./UNIT	1	HFRR-2	AS625
SCALE	281	HER-2	A3625
MODEL USED ON	A		
ASS'Y. NO.			

THE CONTENTS OF THIS DRAWING ARE THE EXCLUSIVE PROPERTY OF THE TECHNICAL MATERIEL CORP. ITS UNAUTHORIZED USE OR REPRODUCTION IN WHOLE OR IN PART IS STRICTLY FORBIDDEN.

NOTES

REQ'D.	ITEM	PART NUMBER	DESCRIPTION	SYMBOL
2	1	PM691-RF-1.250-5	SHAFT, STRAIGHT	

T. KROY

MATERIAL: BRASS-HALF HARD

FINISH: S135 NICKLE PLATE

UNLESS OTHERWISE SPECIFIED DIMENSIONS ARE IN INCHES AND INCLUDE CHEMICALLY APPLIED OR PLATED FINISHES

DECIMALS: X ± .05, .XX ± .01, .XXX ± .005

FRACTIONS: ± 1/64 ANGLES: ± 0° 30'

LIST OF MATERIAL

THE TECHNICAL MATERIEL CORP.
MAMARONECK, NEW YORK

TITLE: SLIDE, CHAIN DRIVE

DRAWN: *Adwards* DATE: 3-6-64

CHECKED: *@* DATE: 9-11-64

ELECT. DES. DATE: _____

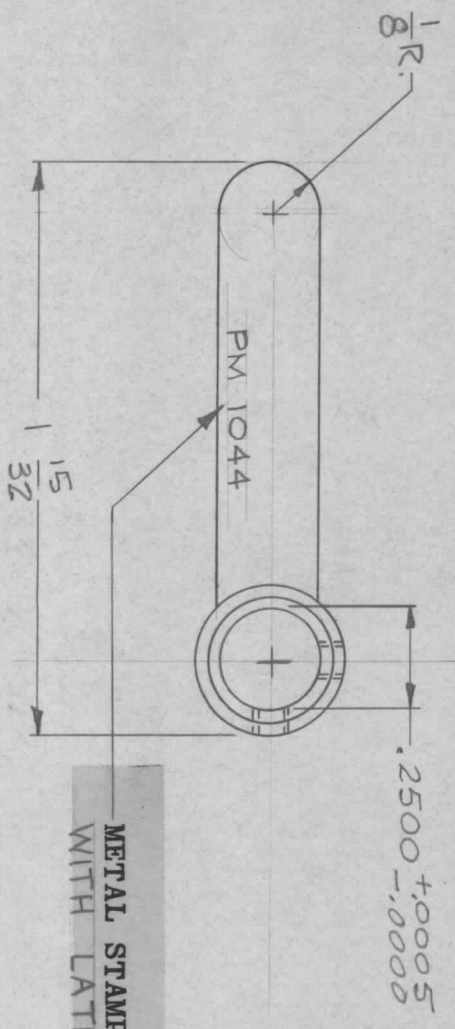
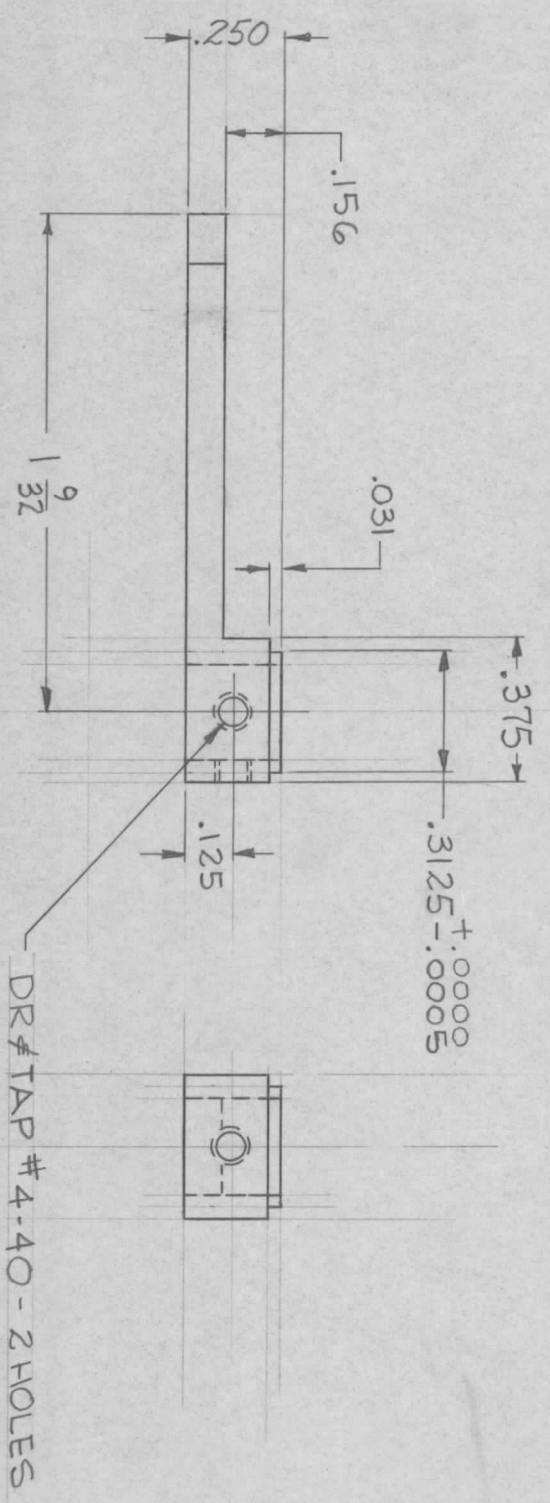
MECH. DES. DATE: 1-11-64

FINAL APPROVAL: *RSE* DATE: _____

PM 1039

REV. LTR. Ø

REVISIONS						
SYM	DESCRIPTION	DATE	E.M.N. NO.	DRAFT	CHKD	APPD
X	EXPERIMENTAL RELEASE	3/23/64	4	AKD		
Ø	ORIGINAL RELEASE FOR PRODUCTION	9-14-64	Ø	JK		



METAL STAMP TMC PART NO. 1/8 HIGH GOTHIC WITH LATEST REV LETTER

NOTE: REMOVE ALL BURRS & SHARP EDGES

PM 1044 Ø

QTY./UNIT	1	MODEL USED ON	HFRR-2	ASS'Y. NO.	A3625
SCALE	2:1	CODE	A		

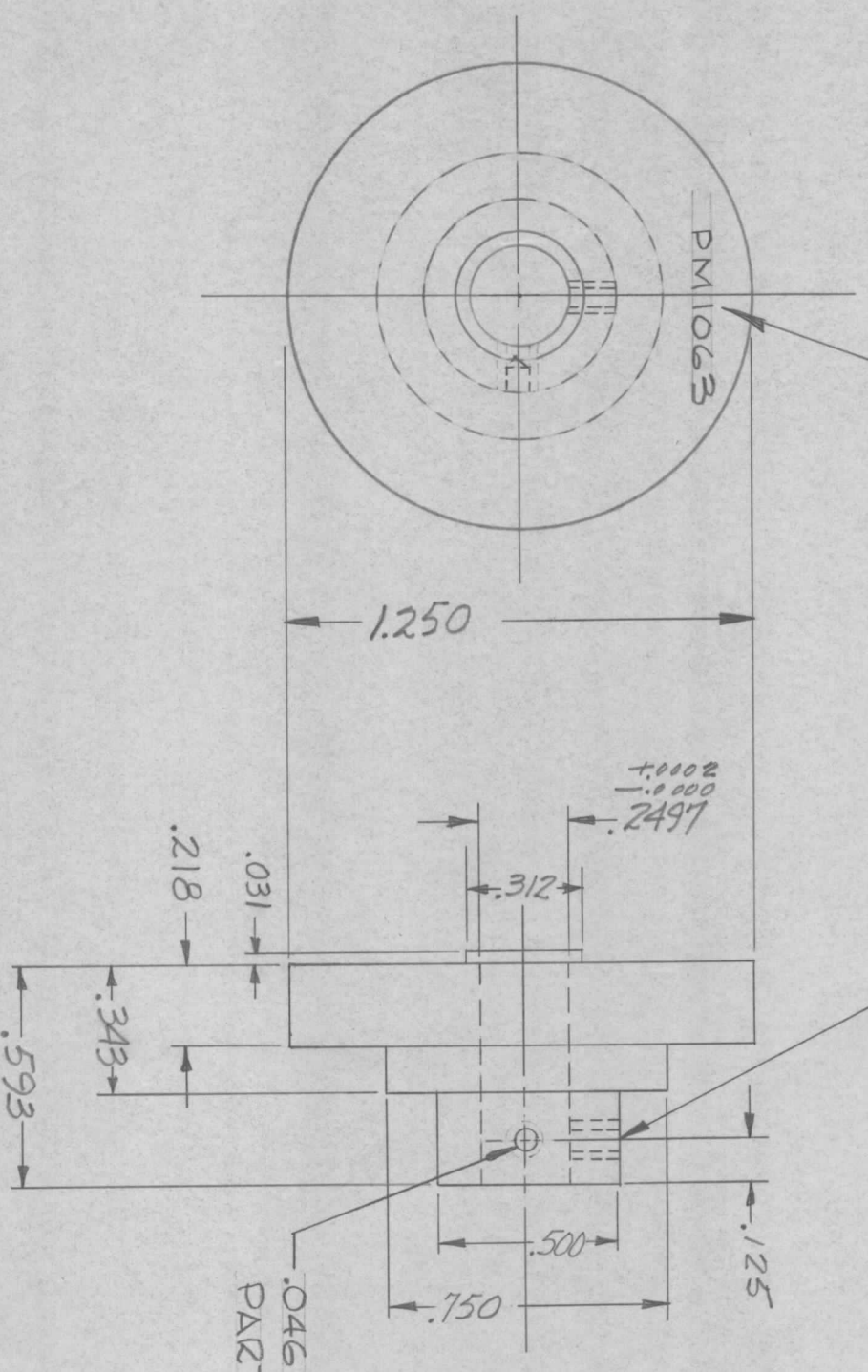
THE CONTENTS OF THIS DRAWING ARE THE EXCLUSIVE PROPERTY OF THE TECHNICAL MATERIAL CORP. ITS UNAUTHORIZED USE OR REPRODUCTION IN WHOLE OR IN PART IS STRICTLY FORBIDDEN.

REQ'D.	ITEM	PART NUMBER	DESCRIPTION	SYMBOL
	T. KRUY	E3112B	LIST OF MATERIAL	
MATERIAL # 303 STAINLESS STEEL				
FINISH S104 PASSIVATE				
TITLE ARM, ACTUATOR				
THE TECHNICAL MATERIAL CORP. MAMARONECK, NEW YORK				
DRAWN <i>T. Kruy</i>		DATE	FINAL APPROVAL	DATE
CHECKED <i>T. Kruy</i>		DATE		
ELECT. DES.		DATE		
MECH. DES. <i>T. Kruy</i>		DATE		
PM 1044				Ø
SHEET				REV. LTR.

UNLESS OTHERWISE SPECIFIED DIMENSIONS ARE IN INCHES AND INCLUDE CHEMICALLY APPLIED OR PLATED FINISHES

DECIMALS: .X ± .05, .XX ± .01, .XXX ± .005
 FRACTIONS: ± 1/64 ANGLES ± 0° 30'

METAL STAMP TMC PART NO. 1/8 HIGH GOTHIC WITH LATEST REV LETTER



PM1063 A

REVISIONS						
SYM	DESCRIPTION	DATE	E.M.N. NO.	DRAFT	CHKD	APPD
X	EXPERIMENTAL RELEASE	5/13/64				
Ø	ORIGINAL RELEASE FOR PRODUCTION	9-14-64				
A	.046 DRILL WAS 4-40 DRILL & TAP	10/18/66	17046	WPO	gsc	gsc

NOTE:
REMOVE ALL BURRS & SHARP EDGES

QTY./UNIT	1	HERR-2	A3625
SCALE	DO NOT SCALE	MODEL USED ON	ASSY. NO.
		HFR-2	A3624
		CODE	A

REC'D.	ITEM	PART NUMBER	DESCRIPTION	SYMBOL
	TICKLER	E3112B	LIST OF MATERIAL	
	MATERIAL	#303 STAINLESS STEEL		
	FINISH	S104 PASSIVATE		

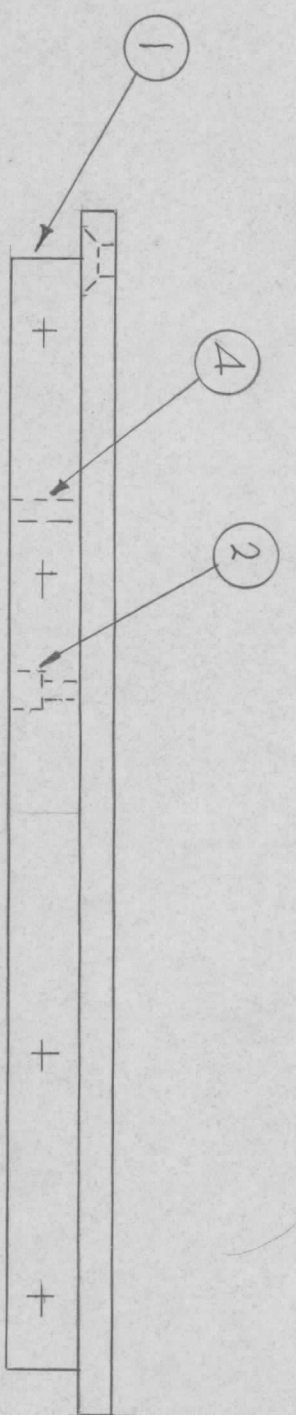
UNLESS OTHERWISE SPECIFIED DIMENSIONS ARE IN INCHES AND INCLUDE CHEMICALLY APPLIED OR PLATED FINISHES			
DECIMALS	TOLERANCES	FRACTIONS	ANGLES
.X ± .05		± 1/64	± 0° 30'
.XX ± .01			
.XXX ± .005			

DRAWN		DATE	FINAL APPROVAL	DATE
CHECKED		DATE		
ELECT. DES.		DATE		
MECH. DES.		DATE		

THE TECHNICAL MATERIEL CORP.	
MAMARONECK, NEW YORK	
BRAKE, DRUM	

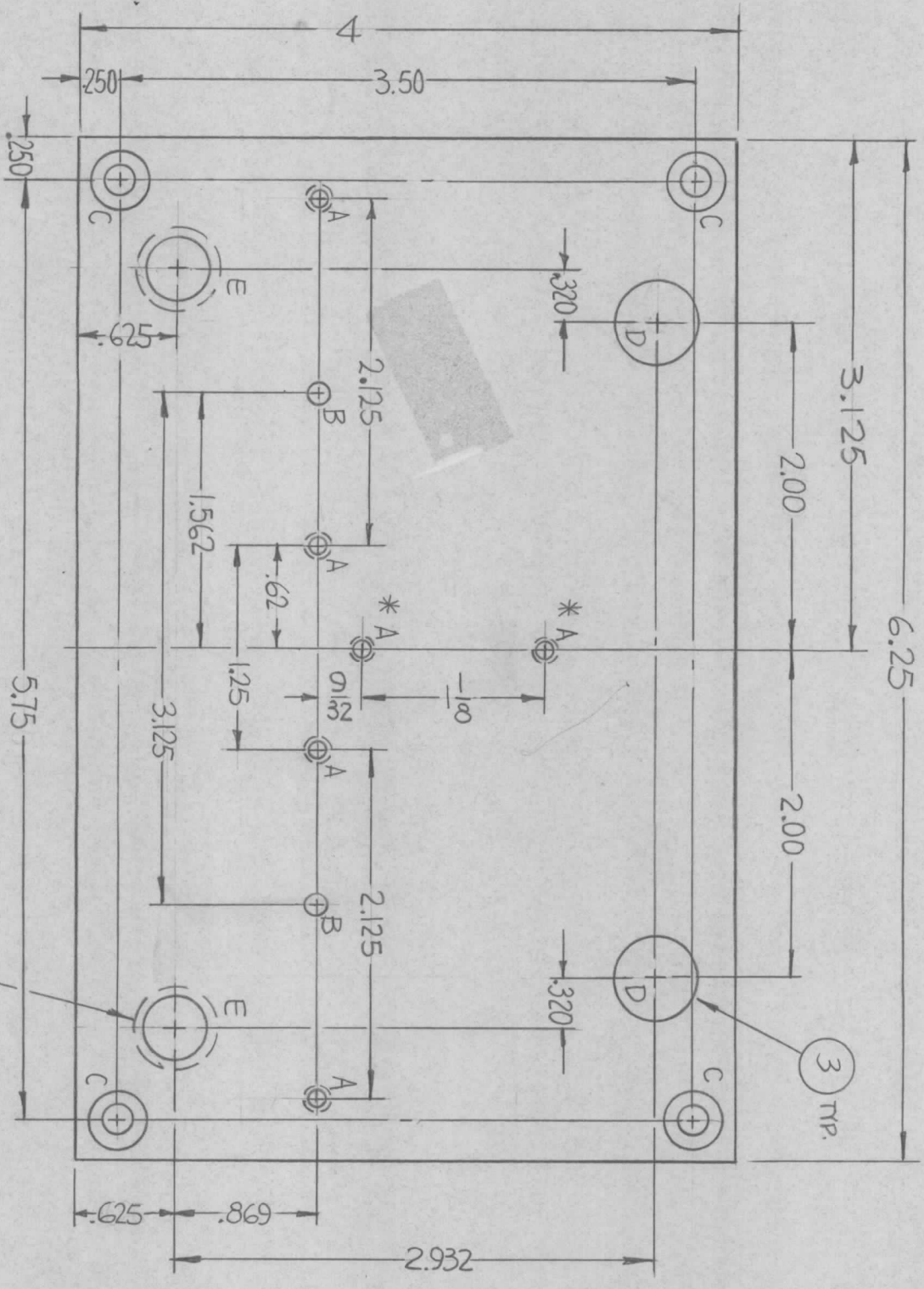
DATE	DATE	DATE	DATE
5/13/64	9-11-64	PM1063	A

NOTES



PM1068

REVISIONS		DATE	E.M.N. NO.	DRAFT	CHKD	APPD
X	EXP. RELEASE	11-28-66				
Ø	ORIGINAL RELEASE FOR PRODUCTION	3.1.67				



HOLES	DESCRIPTION	REQ.
A	DRILL & TAP FOR 4-40	6
B	.1240-.1245 DIA.	2
C	DR. 1.69 DIA. C'SINK 82° TO.337 DIA.	4
D	.4990-.4995 DIA.	2
E	DR. 3/8 DIA. C'BORE .4990-.4995 DIA. .130 DP.	2

PM1068-1 AS SHOWN.
 PM1068-2 a) EXCLUDE *A HOLES.
 b) C' BORE "E" HOLES OPP. SIDE.

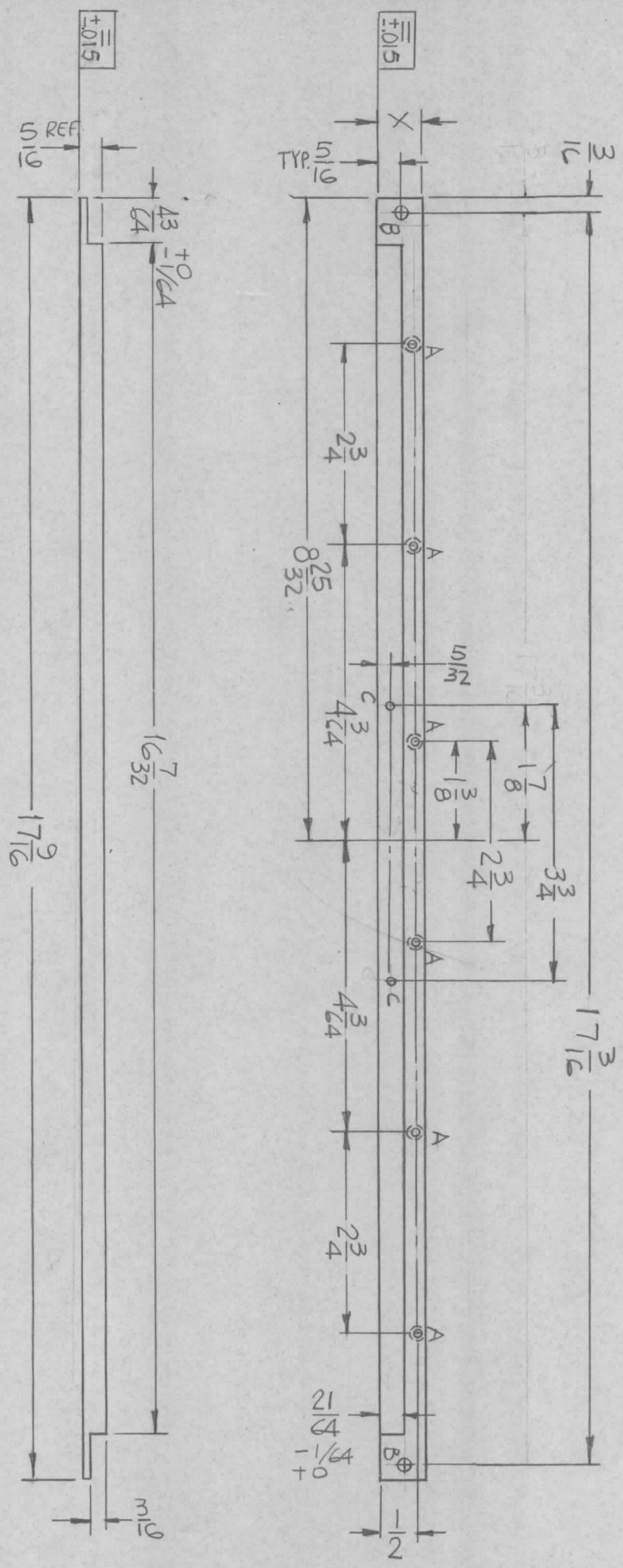
REQ. D.	ITEM	PART NUMBER	DESCRIPTION	SYMBOL
2	4	PN 116 A 3 S	PIN, DOWEL	B
4	3	BB126-15	BEARING, RACE	D, E
4	2	SC165-0440556	SCREW, SOCKET HEAD	A
1	1	PM1306-2	SUPPORT, GEAR BOX	

LIST OF MATERIAL		THE TECHNICAL MATERIEL CORP.	
MATERIAL		MAMARONECK, NEW YORK	
3/16 THICK ALUMINUM			
2024-T3			
FINISH		TITLE	
S404 YEL. IRIDITE		PLATE, GEAR BOX	

QTY./UNIT	1 EA	MODEL USED ON	TLAB-2.SK	ASSY. NO.	
SCALE	1:1	CODE	A		

NOTES
 THE CONTENTS OF THIS DRAWING ARE THE EXCLUSIVE PROPERTY OF THE TECHNICAL MATERIEL CORP. ITS UNAUTHORIZED USE OR REPRODUCTION IN WHOLE OR IN PART IS STRICTLY FORBIDDEN.

REVISIONS		DATE	E.M.N. NO.	DRAFT	CHKD	APPD
SYM	DESCRIPTION					
X	EXP. RELEASE	12-9-66				
Ø	ORIGINAL RELEASE FOR PRODUCTION	3.1.67				
A	DELE. NT139-5C06-10 Ø 70L ±(015) WAS (010)	4/15/68	18863	Wg.		FB



HOLES:
 A ~ DRILL & TAP FOR 4-40 (GREEN)
 B ~ 13/64 DIA. (2 REQ.)
 C ~ .078 DIA (SEE CHART)

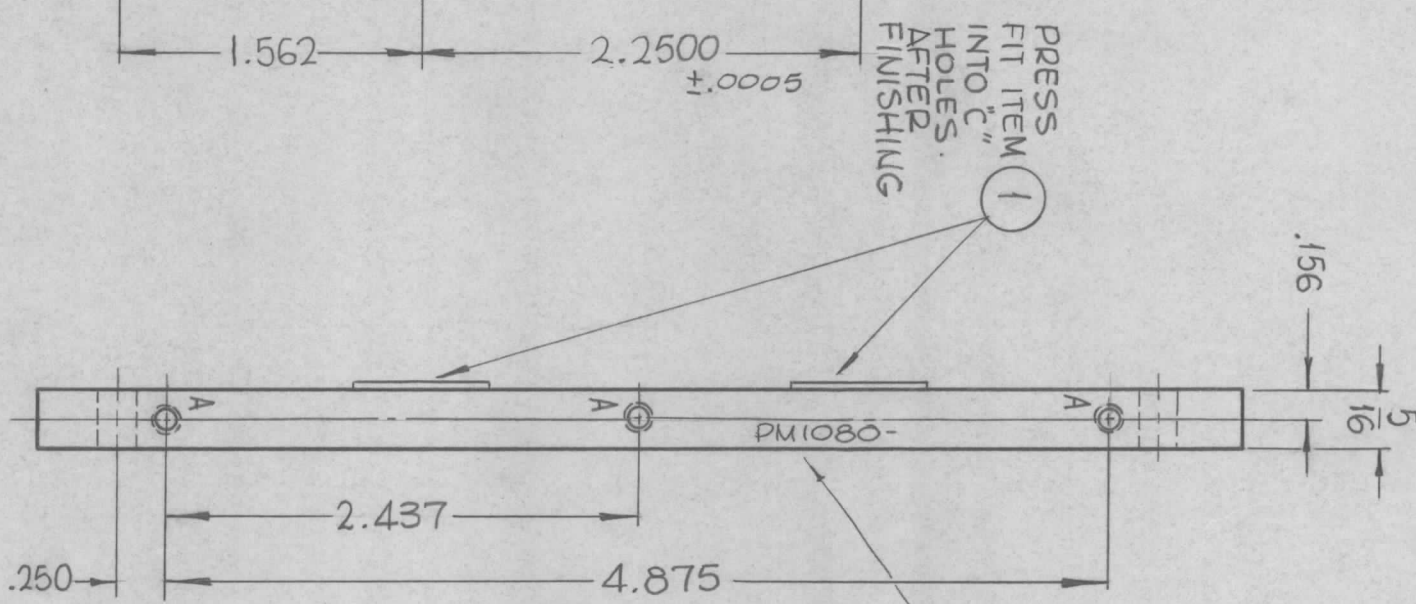
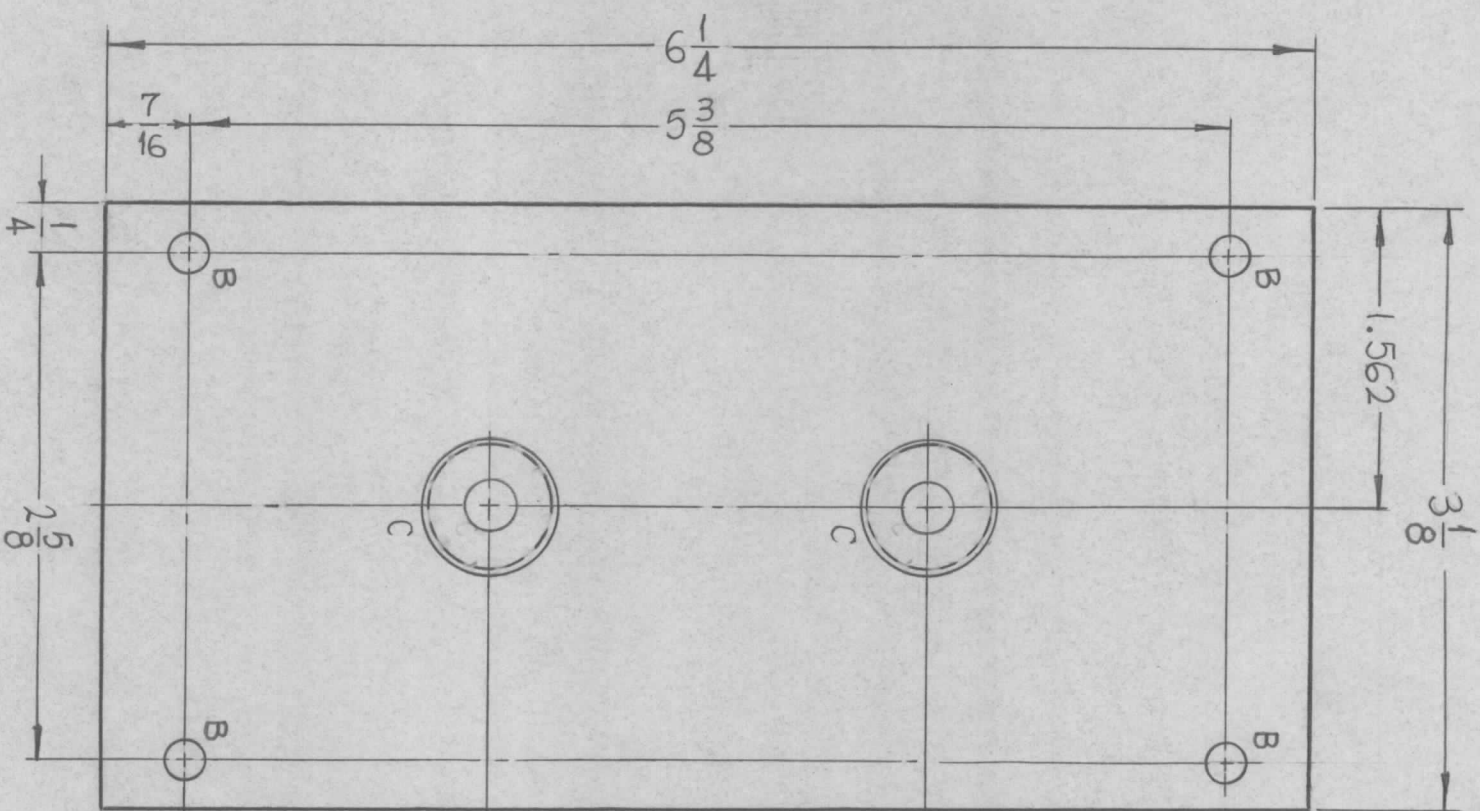
TMC P/N	X	"C" HOLES
PM1070-1	19/32	2 REQ
PM1070-2	5/8	NOT REQ.

Q'TY./UNIT	1 EA	MODEL USED ON	TC SA-1	ASSY. NO.	AXG32-2
SCALE	1:2	CODE	A		

REQ'D.	ITEM	PART NUMBER	DESCRIPTION	SYMBOL
	F. BUDETTI			A
MATERIAL				
5/16 ALUMINUM				
2024-T3				
FINISH				
S115 SMOOTH GREY ENAM.				
TITLE				
BRACKET, MTG MODULES				
LIST OF MATERIAL				
THE TECHNICAL MATERIEL CORP.				
MAMARONECK, NEW YORK				
DRAWN		DATE	FINAL APPROVAL	DATE
CHECKED		DATE		
ELECT. DES.		DATE		
MECH. DES.		DATE		
PM1070				REV. LTR.
				A

NOTES

THE CONTENTS OF THIS DRAWING ARE THE EXCLUSIVE PROPERTY OF THE TECHNICAL MATERIEL CORP. ITS UNAUTHORIZED USE OR REPRODUCTION IN WHOLE OR IN PART IS STRICTLY FORBIDDEN.



PM1080

REVISIONS				
SYM	DESCRIPTION	DATE	E.M.N. NO.	DRAFT
X	EXPERIMENTAL RELEASE	6-30-64		SRG
Ø	ORIGINAL RELEASE FOR PRODUCTION	3/10/65		MT

HOLE	DESCRIPTION	RECD
A	DRILL & TAP FOR 6-32 X 3/8 DP	6
B	3/16 DIA.	4
C	.6246-.6249 DIA.	2

OPPOSITE SIDE IDENTICAL

Q'TY./UNIT	1	MODEL USED ON	HFSR-1	ASSY. NO.	
SCALE	1:1	CODE	A		

NOTES
THE CONTENTS OF THIS DRAWING ARE THE EXCLUSIVE PROPERTY OF THE TECHNICAL MATERIAL CORP. ITS UNAUTHORIZED USE OR REPRODUCTION IN WHOLE OR IN PART IS STRICTLY FORBIDDEN.

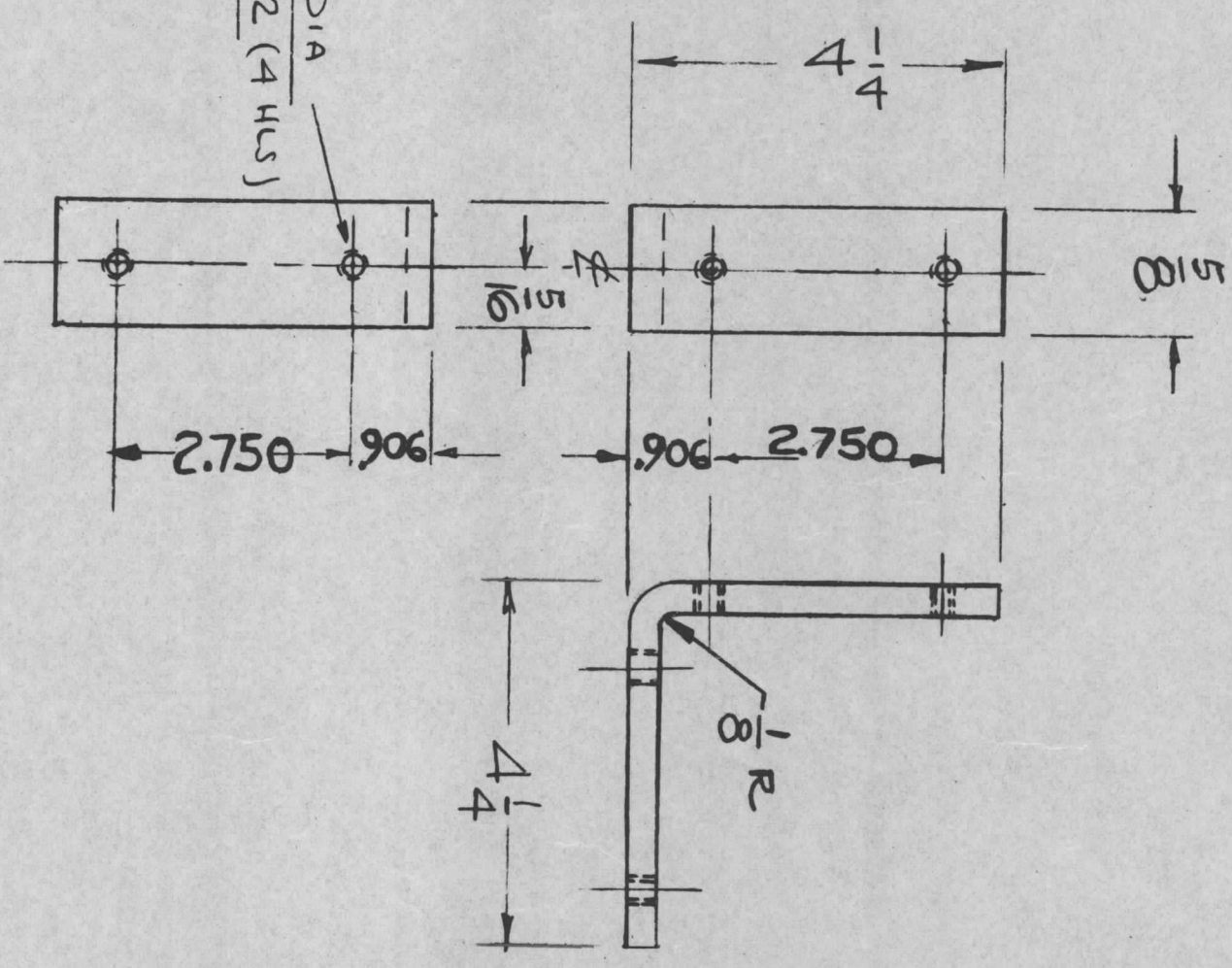
REQD.	ITEM	PART NUMBER	DESCRIPTION	SYMBOL
2	1	BB126-5	BEARING, RACE	

LIST OF MATERIAL		TITLE	
MATERIAL	EATON ALUMINUM	THE TECHNICAL MATERIAL CORP.	
FINISH	S404 YELLOW IRIDITE	MAMARONECK, NEW YORK	
		PLATE, MOUNTING	

UNLESS OTHERWISE SPECIFIED DIMENSIONS ARE IN INCHES AND INCLUDE CHEMICALLY APPLIED OR PLATED FINISHES	DRAWN	SRG	DATE	6-30-64	FINAL APPROVAL		DATE	
DECIMALS .X ± .05	CHECKED	QPS	DATE	3/10/65				
.XX ± .01	ELECT. DES.		DATE	3/10/65				
.XXX ± .005	MECH. DES.		DATE	3/10/65				
FRACTIONS ± 1/64								
ANGLES ± 0° 30'								

PM 1087

REVISIONS		DATE	E.M.N. NO.	DRAFT	CHKD	APPD
X	EXPER. RELEASE	10-14-64	X	<i>[Signature]</i>		
Ø	ORIGINAL RELEASE FOR PRODUCTION	11-25-64	Ø	<i>[Signature]</i>		



#21 (1.59) DIA
TAP # 10-32 (4 HRS)

QTY./UNIT	4	RAK 102-2	A 3716
SCALE		MODEL USED ON	CODE
			A
ASBY. NO.			

REQD. ITEM	PART NUMBER	DESCRIPTION	SYMBOL
STURMER		LIST OF MATERIAL	
MATERIAL		THE TECHNICAL MATERIEL CORP.	
5/16 x 5/8 H.R.S.		MAMARONECK, NEW YORK	
FINISH		TITLE	
CADMIUM PLATE		WINDOW FRAME ANGLE	
UNLESS OTHERWISE SPECIFIED		DRAWN	
DIMENSIONS ARE IN INCHES AND INCLUDE		CHECKED	
CHEMICALLY APPLIED OR PLATED FINISHES		ELECT. DES.	
TOLERANCES		MECH. DES.	
DECIMALS		DATE	
.X ± .05		DATE	
.XX ± .01		DATE	
.XXX ± .005		DATE	
FRACTIONS		DATE	
± 1/64		DATE	
ANGLES		DATE	
± 0° 30'		DATE	

NOTES