

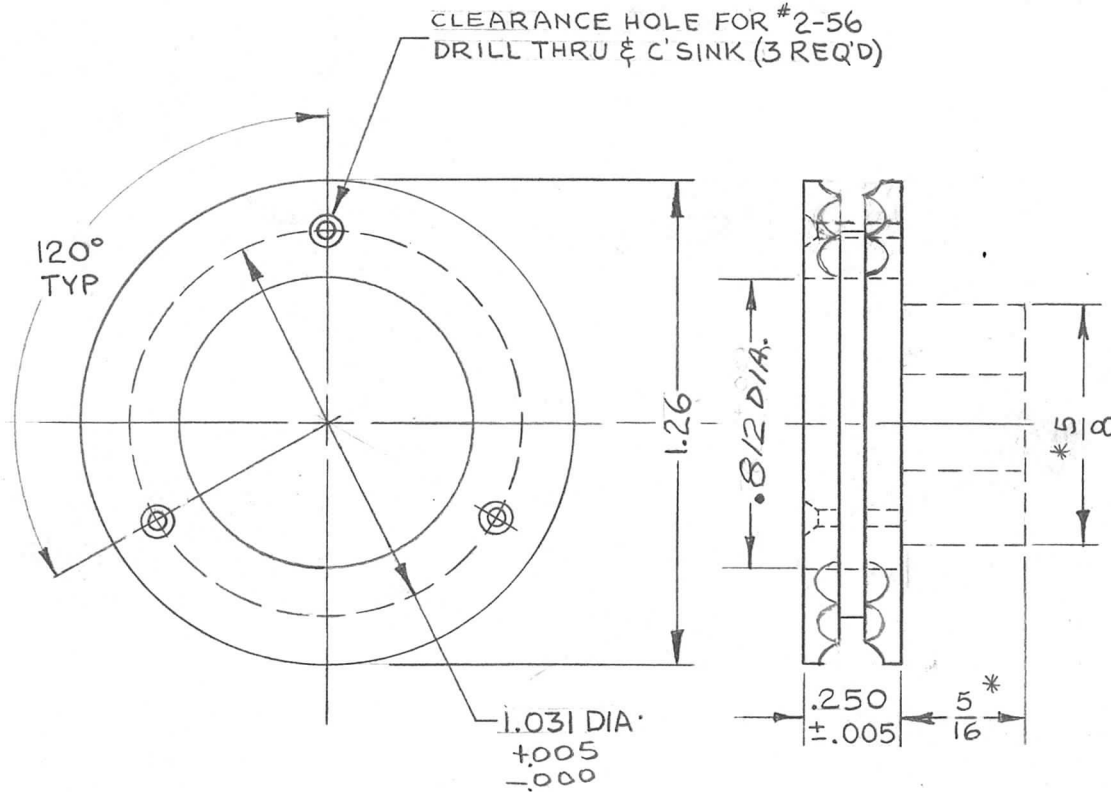
REQ. PER UNIT	USED ON		
	MODEL	ASS'Y. NO.	DATE
1	HFR-2A	A 3673	
1	HFRR-2	A 3625	9-11-64

PM1075 B

PITCH - .166

BALL DIA - 1/8

SOCKETS - 24



\* NOTE:

- 1 - HUB TO BE MACHINED OFF FLUSH WITH GEAR WALL.
- 2 - MATES WITH PM784

B	NOTE 2 & ±.005 TOL. ADDED	3-8-67	17939	MPZ	QC/B	MB
A	.812 WAS .760 ±.002	1/4/65	14948	REV.	QC/B	J
Ø	ORIGINAL RELEASE FOR PRODUCTION	9-11-64	Ø	JP		
X <sub>1</sub>	TITLE WAS SPROCKET	9-10-64		J.L.		
X	EXPERIMENTAL RELEASE	5-21-64	#	MB		
SYM	DESCRIPTION	DATE	CH. NO.	DRAFTS	CHECKER	ENG. APP.
UNLESS OTHERWISE SPECIFIED DIMENSIONS ARE IN INCHES AND INCLUDE CHEMICALLY APPLIED OR PLATED FINISHES		SCALE 2:1				
DECIMALS .X ±.05 .XX ±.01 .XXX ±.005	TOLERANCES	FRACTIONS ± 1/64 ANGLES ± 0° 30'	CODE C	S401-305		

MODIFIED PER TMC REQUIREMENT

REQ. ITEM	PART NO.	T. KRUY	DESCRIPTION	SYMBOL
	#		THE TECHNICAL MATERIEL CORP. MAMARONECK, NEW YORK	
	STOCK SIZE			
	BRASS		SPROCKET WHEEL	
	MATERIAL			
HALF HARD	#	MB 5.21.64	@	KAC
TYPE & TEMPER	HEAT TREAT. SPEC.	DRAWN	CHECKED	FINAL APPROVAL
S135 NICKEL PLATE			T. Kruey	PM1075 B
FINISH & SPEC. NO.	ELEC. DES. APP.	MECH. DES. APP.		