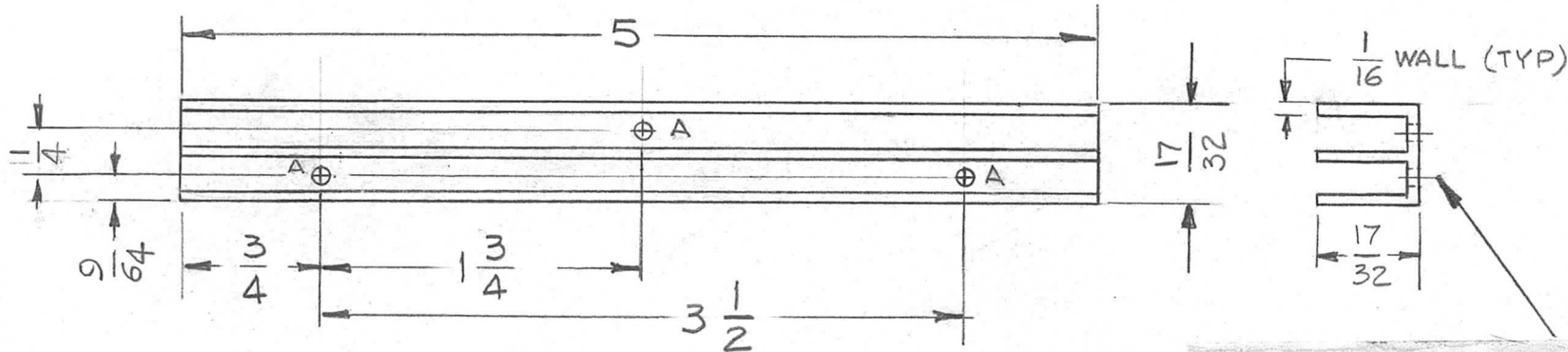


HOLE	DESCRIPTION	REQ
A	DRILL & TAP FOR 2-56	3

REQ. PER UNIT	USED ON		
	MODEL	ASS'Y. NO.	DATE
6	HFR-2	A3648	4-16-64

PM-1060 A



METAL STAMP TMC PART NO. 1/8 HIGH GOTHIC, WITH LATEST REVISION LETTER.

- UNLESS OTHERWISE SPECIFIED - REMOVE ALL BURRS & SHARP EDGES

SYM	DESCRIPTION	DATE	CH. NO.	DRAFTS	CHECKER	ENG. APP.	REQ. ITEM	PART NO.	DESCRIPTION	SYMBOL	
A	ADDED "EXTRUDED STOCK"	8-17-66	16752	RME	<i>QCS</i>	<i>MM</i>	1/16		THE TECHNICAL MATERIEL CORP. MAMARONECK, NEW YORK	ANGER	
Ø	ORIGINAL RELEASE FOR PRODUCTION	8-13-64	Ø	<i>QCS</i>			STOCK SIZE				
X	EXP. RELEASE			GDL			ALUMINUM EXTRUDED STOCK		HEAT SINK, ELECTRICAL		
							MATERIAL		ELECTRONIC COMPONENT		
UNLESS OTHERWISE SPECIFIED DIMENSIONS ARE IN INCHES AND INCLUDE CHEMICALLY APPLIED OR PLATED FINISHES		SCALE		1:1			HALF HARD	<i>M</i>	G.D.L	@	<i>RJC</i>
DECIMALS .X ± .05 .XX ± .01 .XXX ± .005		FRACTIONS ± 1/64 ANGLES ± 0° 30'		TOLERANCES		CODE A	SIZES	BLACK ANODIZE	<i>Anger</i>		
							FINISH & SPEC. NO.		ELEC. DES. APP.	MECH. DES. APP.	PM-1060 A