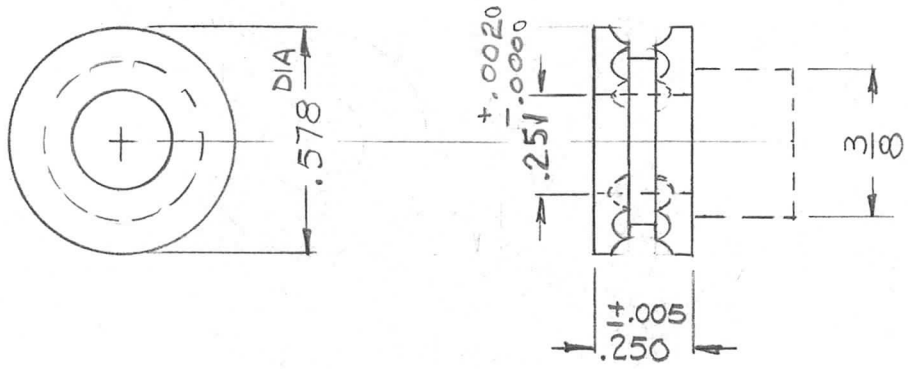


REQ. PER UNIT	USED ON		
	MODEL	ASS'Y. NO.	DATE
2	HFR-2A	A3224	6-4-64
2	HFR-2	A3225	9-11-64

PM1048 A

PITCH - .166
 BALL DIA - 1/8
 SOCKETS - 12



NOTE -
 HUB TO BE MACHINED OFF
 FLUSH W/GEAR WALL

MODIFIED PER TMC REQUIREMENTS

SYM	DESCRIPTION	DATE	CH. NO.	DRAFTS	CHECKER	ENG. APP.	REQ. ITEM	PART NO.	T. KRUY	DESCRIPTION	SYMBOL	
A	.251 ^{+0.0020} WAS .250 ^{+0.0003}	7-9-65	14380	LRV	QC/B	Q						
Ø	ORIGINAL RELEASE FOR PRODUCTION	9-11-64	Ø	PL			#			THE TECHNICAL MATERIEL CORP. MAMARONECK, NEW YORK		
X ₁	TITLE WAS SPROCKET	9-10-64		PL			STOCK SIZE			SPROCKET, WHEEL		
X	EXP. RELEASE	6-4-64	#	G.D.L			BRASS					
							MATERIAL					
	UNLESS OTHERWISE SPECIFIED DIMENSIONS ARE IN INCHES AND INCLUDE CHEMICALLY APPLIED OR PLATED FINISHES	SCALE	2:1					HALF HARD	#	G.D.L	@	RAC
							TYPE & TEMPER	HEAT TREAT. SPEC.	DRAWN	CHECKED	FINAL APPROVAL	
	DECIMALS .X ± .05 .XX ± .01 .XXX ± .005	TOLERANCES	CODE	S401-305				S135 NICKEL PLATE		T. Kruy	PM1048	A
		FRACTIONS ± 1/64 ANGLES ± 0° 30'					FINISH & SPEC. NO.		ELEC. DES. APP.	MECH. DES. APP.		