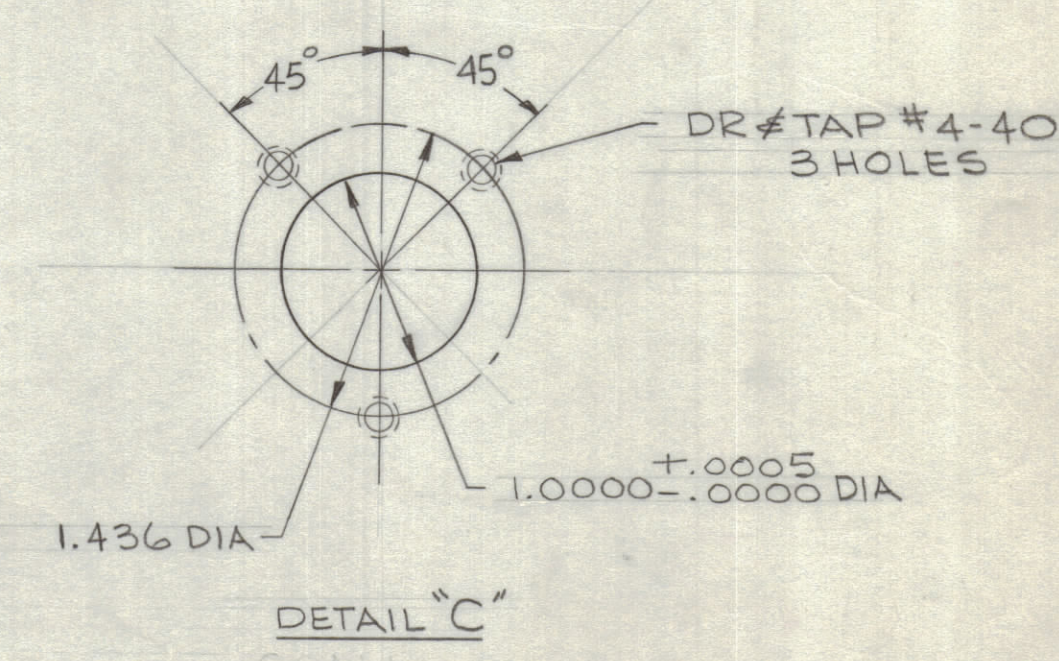
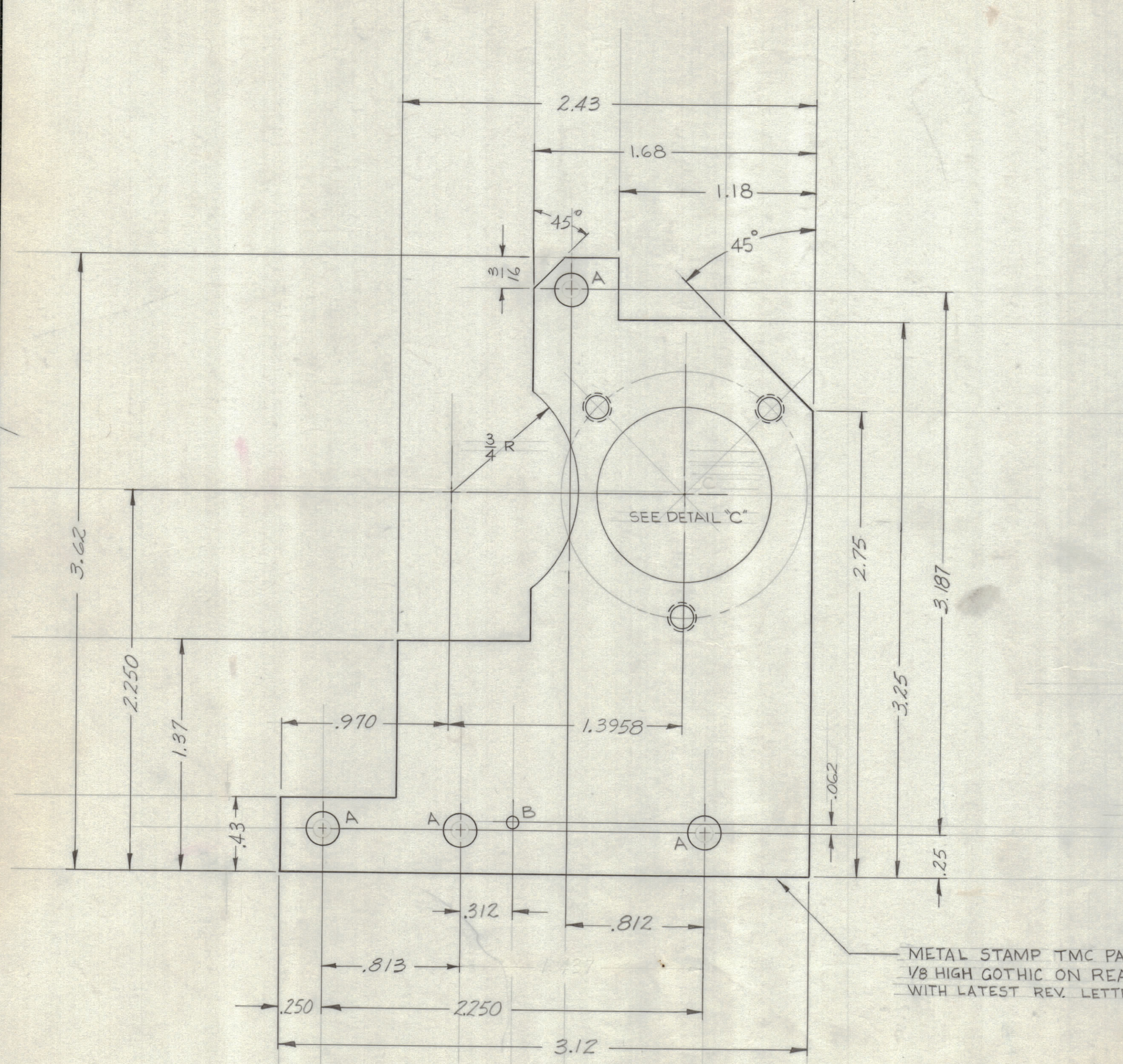


REVISIONS						
ZONE	SYM	DESCRIPTION	DATE	E.M.N. NO.	DRAFT	CHKD APPD
+	X	EXPERIMENTAL RELEASE	4/1/64			
∅		ORIGINAL RELEASE FOR PRODUCTION	9.14.64			



HOLE LEGEND		
HOLE	DESCRIPTION	REQD
A	.189 DIA	4
B	.063 DIA	1
C	SEE DETAIL	1

METAL STAMP TMC PART NO.
1/8 HIGH GOTHIC ON REAR
WITH LATEST REV. LETTER

- NOTES:
- 1.- PLATE TO BE FLAT WITHIN .003
 - 2.- REMOVE ALL BURRS & SHARP EDGES

REQ'D.	ITEM	PART NUMBER	DESCRIPTION	SYMBOL
	T. KRUY	E3112B	LIST OF MATERIAL	
MATERIAL		.113 THK BRASS HALF HARD		
FINISH		S135 NICKEL PLATE		
THE TECHNICAL MATERIEL CORP.		MAMARONECK, NEW YORK		
TITLE		PLATE, IDLER (TUNING)		
DRAWN	DATE	FINAL APPROVAL	DATE	
Checked	4-1-64			
	5-11-64			
ELECT. DES.	DATE	PM 1045 ∅		
MECH. DES.	DATE	SHEET		
REV. LTR.				

Q'TY./UNIT	MODEL USED ON	ASS'Y. NO.
1	HFR-2	A3625
1	HFR-2A	A3624
SCALE	CODE	
2:1	A	

THE CONTENTS OF THIS DRAWING ARE THE EXCLUSIVE PROPERTY OF THE TECHNICAL MATERIEL CORP. ITS UNAUTHORIZED USE OR REPRODUCTION IN WHOLE OR IN PART IS STRICTLY FORBIDDEN.

NOTES

PM 1045 ∅