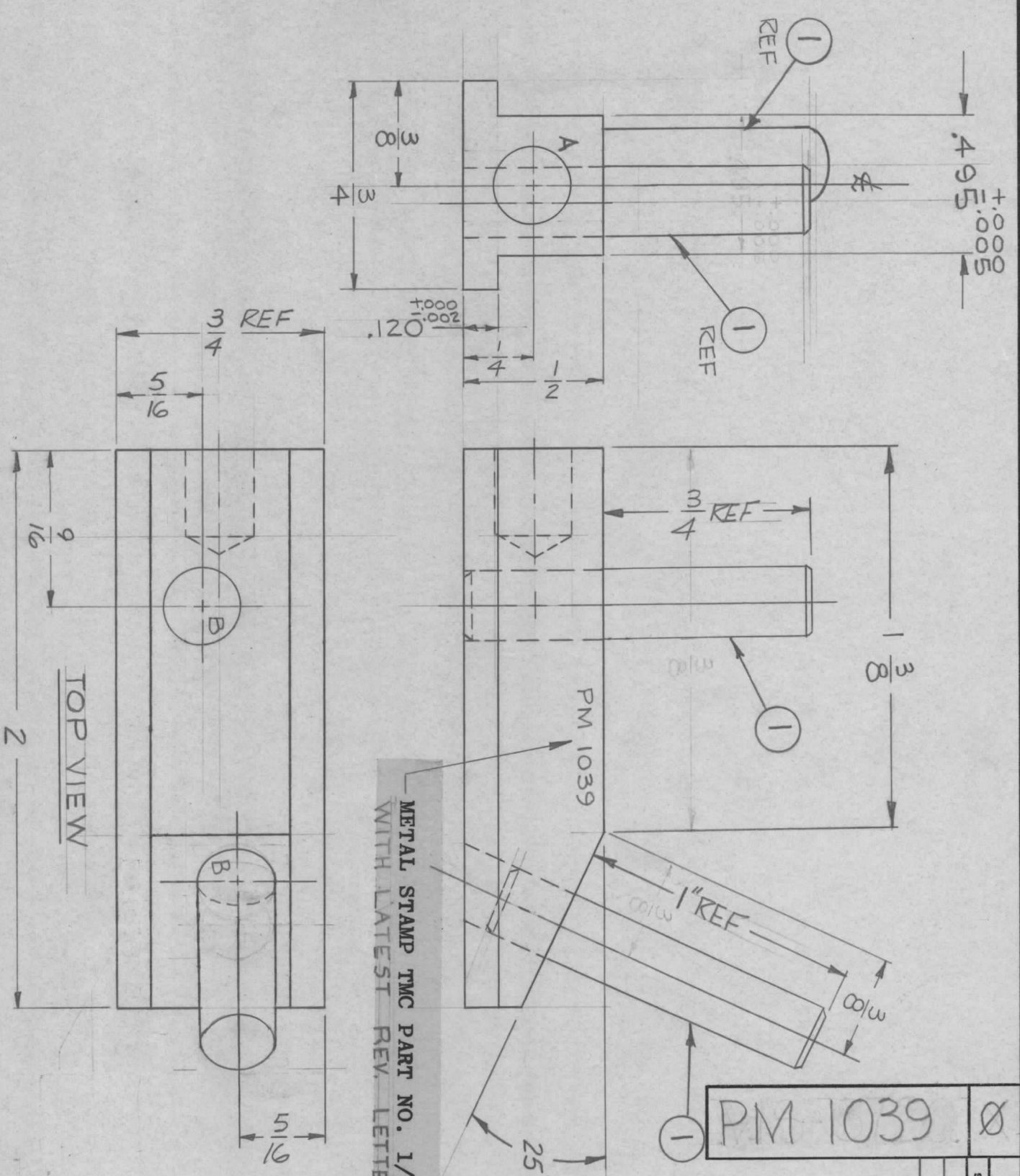


REVISIONS					
SYM	DESCRIPTION	DATE	E.M.N. NO.	DRAFT	CHKD
X	EXPERIMENTAL RELEASE	3-6-64	11	AD	
Ø	ORIGINAL RELEASE FOR PRODUCTION	9-14-64	Ø	Ø	



METAL STAMP TMC PART NO. 1/8 HIGH GOTHIC.  
WITH LATEST REV. LETTER

HOLE LEGEND		
HOLE	DESCRIPTION	REQD
A	17/64 DIA X 5/16 DP.	1
B	.2500 ±.0004 DIA DRILL THRU	2

NOTE:

REMOVE ALL BURRS & SHARP EDGES.

QTY./UNIT	1	HFRR-2	AS625
SCALE	281	HER-2	A3665
MODEL USED ON	A		
ASS'Y. NO.			

THE CONTENTS OF THIS DRAWING ARE THE EXCLUSIVE PROPERTY OF THE TECHNICAL MATERIEL CORP. ITS UNAUTHORIZED USE OR REPRODUCTION IN WHOLE OR IN PART IS STRICTLY FORBIDDEN.

NOTES

REQ'D.	ITEM	PART NUMBER	DESCRIPTION	SYMBOL
2	1	PM691-RF-1.250-5	SHAFT, STRAIGHT	

LIST OF MATERIAL		TITLE	
MATERIAL	FINISH	THE TECHNICAL MATERIEL CORP.	
BRASS-HALF HARD	S135 NICKLE PLATE	MAMARONECK, NEW YORK	
		SLIDE, CHAIN DRIVE	

UNLESS OTHERWISE SPECIFIED DIMENSIONS ARE IN INCHES AND INCLUDE CHEMICALLY APPLIED OR PLATED FINISHES			
DECIMALS	TOLERANCES	FRACTIONS	ANGLES
X ± .05		± 1/64	
.XX ± .01		ANGLES	
.XXX ± .005		± 0° 30'	

DRAWN	DATE	FINISH APPROVAL	DATE
Checked	3-6-64	Ø	
CHECKED	DATE		
	9-11-64		
ELECT. DES.	DATE		
MECH. DES.	DATE		
T. Huey	1-11-64	PM 1039	
			Ø