

PRELIMINARY DRAWING

REQ. PER UNIT

1

USED ON

MODEL

HFR-2

ASS'Y. NO.

A3533

DATE

3-2-64

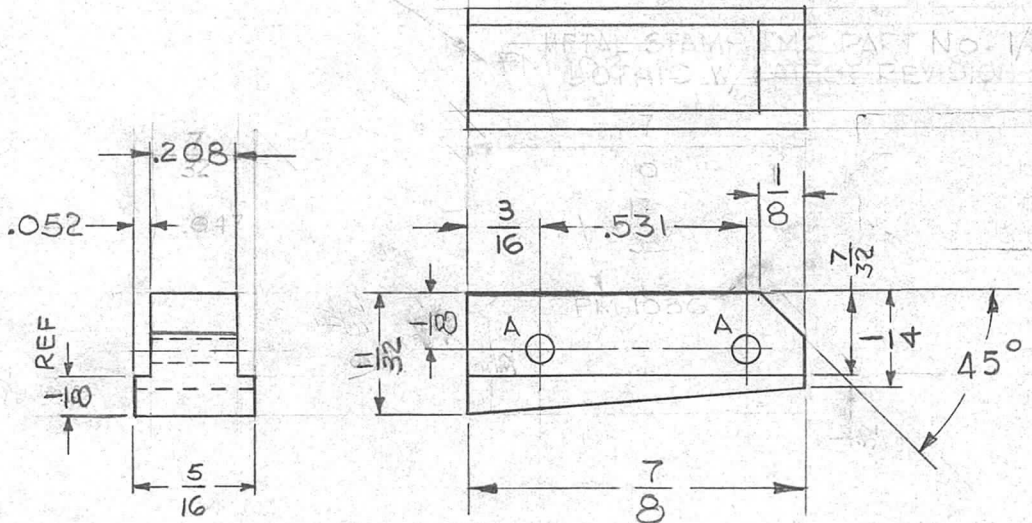
PM 1036

B

Not for Production RT NC

1/8 HIGH LOATHIC W/STAMP RE LETTER

METAL STAMP PART No. 1/8 HIGH
LOATHIC W/STAMP RE LETTER



UNLESS OTHERWISE SPECIFIED:
1. - REMOVE ALL BURRS & SHARP EDGES.

HOLE LEGEND		
HOLE	DESCRIPTION	REQ'D
A	.062-.065 DIA	2

B	PT/No & Note deleted	3.15.67	17957	WHD	QCB	
A	PM1036 LETTERING RELOC (METAL STAMP)	3.5.65	13615	LD	QCB	
Ø	ORIGINAL RELEASE FOR PRODUCTION	8/14/64		LD		
X1	DIMS. 1/8 & 45° ADDED	8-6-64	#	LD	@	
X	EXP. RELEASE	3-2-64	#	LD	@	
SYM	DESCRIPTION	DATE	CH. NO.	DRAFTS	CHECKER	ENG. APP.
UNLESS OTHERWISE SPECIFIED DIMENSIONS ARE IN INCHES AND INCLUDE CHEMICALLY APPLIED OR PLATED FINISHES		SCALE 2:1				
DECIMALS X ± .05 XX ± .01 XXX ± .005	TOLERANCES	FRACTIONS ± 1/64 ANGLES ± 0° 30'	CODE A			

REQ. ITEM	PART NO.	T. KRUY	DESCRIPTION	SYMBOL
	#		THE TECHNICAL MATERIEL CORP. MAMARONECK, NEW YORK	
	STOCK SIZE		WEDGE, ACTUATOR	
	MATERIAL			
# 303	#	Adams	@ 5-5-64	RAC
TYPE & TEMPER	HEAT TREAT. SPEC.	DRAWN	CHECKED	FINAL APPROVAL
S104 PASSIVATE			T. Kruy	PM 1036 B
FINISH & SPEC. NO.	ELEC. DES. APP.	MECH. DES. APP.		