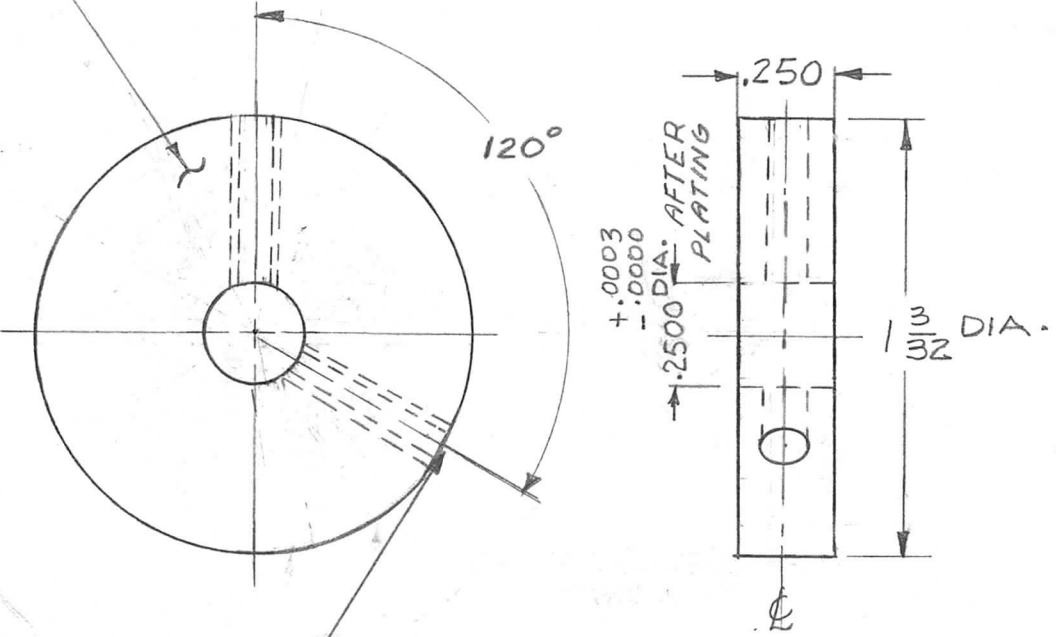


REQ. PER UNIT	USED ON		
	MODEL	ASS'Y. NO.	DATE
1	HFR-2A		2-11-64
1	HFRR-2		9-11-64

PM-1031 A

MARK TMC PART NO WITH LATEST REV. LETTER. (1/8 HIGH BLACK GOTHIC)



DR#TAP#6-32 THRU 2 PLACES

NOTE:
REMOVE ALL BURRS & SHARP EDGES

A	120° WAS 170°	10/1/65	14960	M.V.	J.W.	J.
Ø	ORIGINAL RELEASE FOR PRODUCTION	9-11-64	Ø	J.P.		
X ₂	NICKEL WAS NICKLE DIM. LINE 1-3/32 WAS EXTENDED	9-10-64		J.L.		
X ₁	3/4" HOLES .062-.065 DIA. & 3/8" HOLES .187 DIA DELETED	7-31-64		G.D.L.		
X	EXP. RELEASE	3/6/64	-4	A.Q.		
SYM	DESCRIPTION	DATE	CH. NO.	DRAFTS	CHECKER	ENG. APP.
UNLESS OTHERWISE SPECIFIED DIMENSIONS ARE IN INCHES AND INCLUDE CHEMICALLY APPLIED OR PLATED FINISHES		SCALE		Z:1		
DECIMALS	FRACTIONS	CODE				
.X ± .05	± 1/64	A				
.XX ± .01	ANGLES					
.XXX ± .005	± 0° 30'					

REQ. ITEM	PART NO.	T. KRUY	DESCRIPTION	SYMBOL
			THE TECHNICAL MATERIEL CORP. MAMARONECK, NEW YORK	
	— # —		PLATE, SPACER	
	STOCK SIZE			
	BRASS			
	MATERIAL			
	HALF HARD	A. Davis	@	R.T.C.
	TYPE & TEMPER		CHECKED	FINAL APPROVAL
	HEAT TREAT. SPEC.		T. Kruy	PM-1031 A
	S135 NICKEL PLATE			
	FINISH & SPEC. NO.	ELEC. DES. APP.	MECH. DES. APP.	