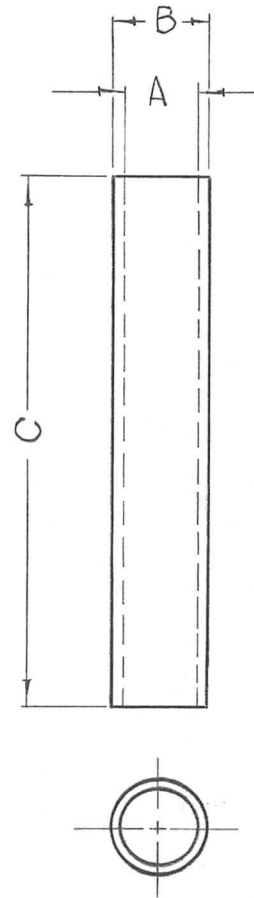


TMC NO.	A	B	C	MATERIAL	FINISH	REQ. PER UNIT	USED ON		DATE	PM-1010	Ø
							MODEL	ASS'Y. NO.			
PM-1010-1	.316 ±.003	1/2	.250	STAINLESS STL, 303	S104-PASSIVATE	1	GPT-200K (AX-395)	A-3242			
-2	.316 ±.003	1/2	1.937	STAINLESS STL, 303	S104-PASSIVATE	1	GPT-200K (AX-395)	A-3242			
-3	.501 ±.003	3/4	.515	STAINLESS STL, 303	S104-PASSIVATE	1	GPT-200K (AS-123)	A-2681			
-4	.376 ±.003	5/8	.687	STAINLESS STL, 303	S104-PASSIVATE	1	GPT-200K (AS-124)	A-2682			



SYM	DESCRIPTION	DATE	CH. NO.	DRAFTS	CHECKER	ENG. APP.	REQ. ITEM	PART NO.	F. BUDETTI	DESCRIPTION	SYMBOL	
Ø	ORIGINAL RELEASE FOR PRODUCTION	3-3-64					SEE CHART		THE TECHNICAL MATERIEL CORP. MAMARONECK, NEW YORK			
XI	PM-1010-3 C WAS .687 PM-1010-4 C WAS .515	2-24-64					SEE CHART		SLEEVE, SPACER			
	UNLESS OTHERWISE SPECIFIED DIMENSIONS ARE IN INCHES AND INCLUDE CHEMICALLY APPLIED OR PLATED FINISHES	SCALE	#						John C. Biele	gcb	RIC 3-30-64	
	DECIMALS .X ± .05 .XX ± .01 .XXX ± .005	FRACTIONS ± 1/64 ANGLES ± 0° 30'	CODE	A								
	TOLERANCES							SEE CHART				
								FINISH & SPEC. NO.	ELEC. DES. APP.	MECH. DES. APP.	PM-1010	Ø