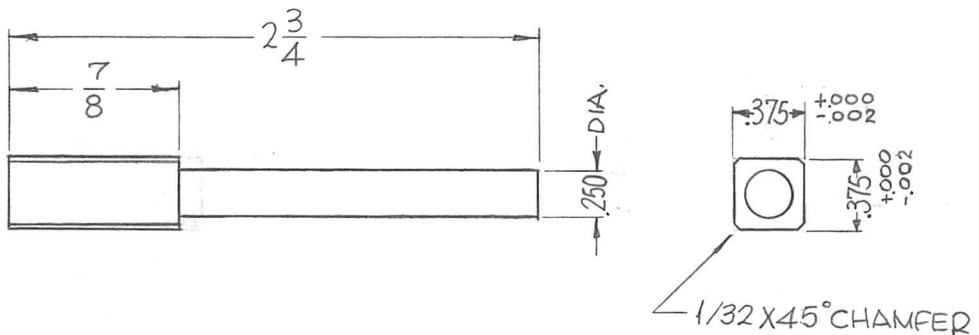


|               |          |            |          |         |
|---------------|----------|------------|----------|---------|
| REQ. PER UNIT | USED ON  |            |          | PM-1008 |
|               | MODEL    | ASS'Y. NO. | DATE     |         |
| 1             | GPT-200K | AX-392     | 12-27-63 |         |



| REQ. | ITEM | PART NO.           | F. BUDETTI DESCRIPTION       |                 |         |                | SYMBOL |
|------|------|--------------------|------------------------------|-----------------|---------|----------------|--------|
|      |      | AS NOTED           | THE TECHNICAL MATERIEL CORP. |                 |         |                |        |
|      |      | STOCK SIZE         | MAMARONECK, NEW YORK         |                 |         |                |        |
|      |      | STAINLESS STEEL    | SHAFT, COUNTER               |                 |         |                |        |
|      |      | MATERIAL           |                              |                 |         |                |        |
|      |      | 303                | SRG                          | aa gcb          | RDC     | 4-7-64         |        |
|      |      | TYPE & TEMPER      | HEAT TREAT. SPEC.            | DRAWN           | CHECKED | FINAL APPROVAL |        |
|      |      | S104-PASSIVATE     |                              | DB lb           | ac 3/16 | PM-1008        |        |
|      |      | FINISH & SPEC. NO. | ELEC. DES. APP.              | MECH. DES. APP. |         |                |        |

|   |   |            |
|---|---|------------|
| UNLESS OTHERWISE SPECIFIED<br>DIMENSIONS ARE IN INCHES AND INCLUDE<br>CHEMICALLY APPLIED OR PLATED FINISHES | SCALE<br>1" = 1"                          | CODE<br>A  |
| DECIMALS<br>.X ± .05<br>.XX ± .01<br>.XXX ± .005  | FRACTIONS<br>± 1/64<br>ANGLES<br>± 0° 30' | TOLERANCES |