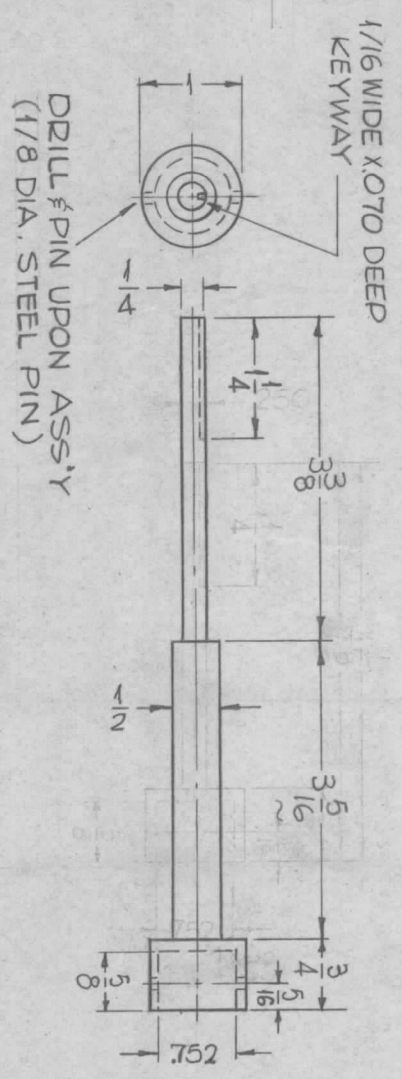
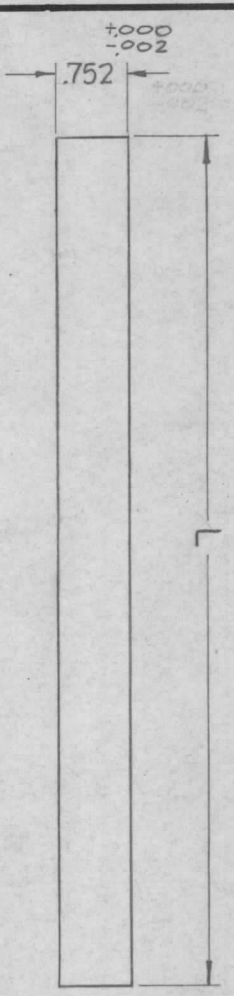


COUPLING, SHAFT NO.1
 MAT'L - STAINLESS STEEL (NON MAG.)
 FINISH - S-104 PASSIVATE,
 PM-1001 1REQ.



COUPLING, SHAFT NO.2
 MAT'L - STAINLESS STEEL (NON MAG.)
 FINISH - S-104 PASSIVATE,
 PM-1001 1REQ.

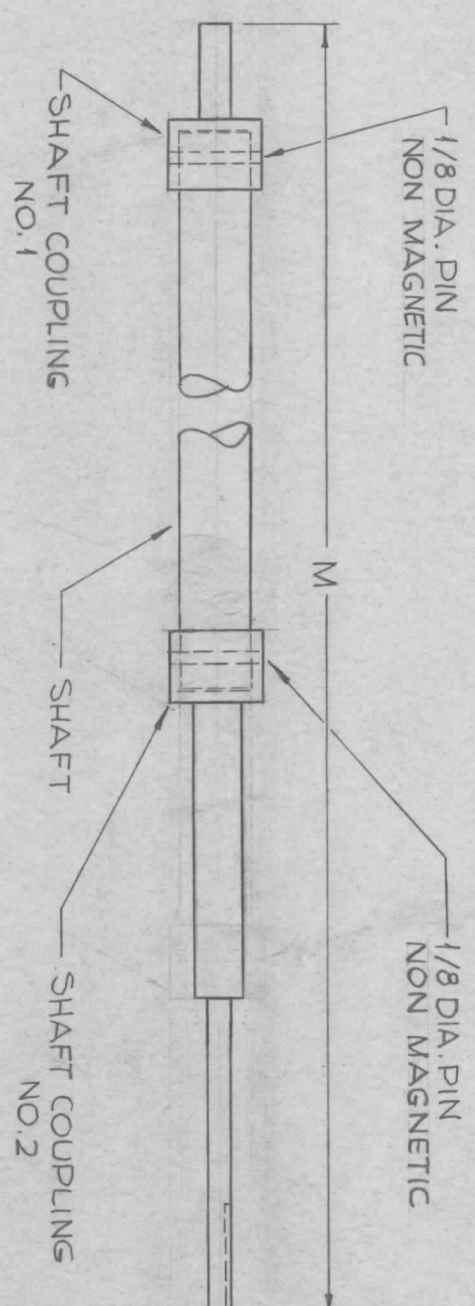


TMC PT. NO	L	REQ/ASS'Y
PM-1001-1	24-1/4	1

SHAFT
 MAT'L - SILICONE GLASS, TYPE-G-7

PM-1001

SYM		DESCRIPTION	DATE	E.M.N. NO.	DRAFT	CHKD	APPD
X1	REDRAWN	SHAFT NO.2 REVISED	10-23-63		SPG		
X2	GOODING	ORIGINAL RELEASE FOR PRODUCTION	10-28-63		SPG		
0			5-18-64		SPG		



FINAL ASS'Y

TMC PT. NO.	M	REQ/UNIT	USED ON
PM-1001-1	32-3/16	1	AX-395 (TUNE)

REQ'D.	ITEM	PART NUMBER	DESCRIPTION	SYMBOL
	F. BUDETTI		LIST OF MATERIAL	

MATERIAL

TITLE
 THE TECHNICAL MATERIEL CORP.
 MAMARONECK, NEW YORK

FINISH
 SHAFT, CAPACITOR DRIVE

UNLESS OTHERWISE SPECIFIED DIMENSIONS ARE IN INCHES AND INCLUDE CHEMICALLY APPLIED OR PLATED FINISHES	DRAWN SPG	DATE 10-23-63	FINAL APPROVAL KRE	DATE
DECIMALS .XX ± .01 .XXX ± .005	CHECKED AA			
TOLERANCES	ELECT. DES. MCH. DES.	DATE 9/19/64	DATE	
FRACTIONS ± 1/64 ANGLES ± 0° 30'			PM-1001	0
				REV. LTR.

NOTES

QTY./UNIT
 SCALE 1/2" = 1"

MODEL USED ON

ASS'Y. NO.

THE CONTENTS OF THIS DRAWING ARE THE EXCLUSIVE PROPERTY OF THE TECHNICAL MATERIEL CORP. ITS UNAUTHORIZED USE OR REPRODUCTION IN WHOLE OR IN PART IS STRICTLY FORBIDDEN.