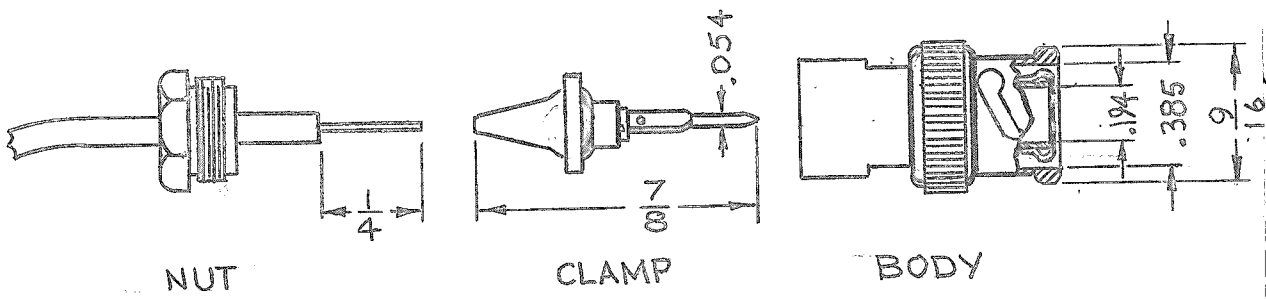


STANDARD DRAWING

REQ. PER UNIT	USED ON			PL-244 B
	MODEL	ASS'Y. NO.	DATE	
—	STANDARD	—	4-2-64	

TMC P/N	MFG P/N	CABLE ACCOMMODATED	REPLACES
PL244-1	30220-13	RG174/U	PL240 PL169



- ### SPECIFICATIONS
- QUANTITY OF CONTACTS: ONE
 - QUANTITY OF MATING CONTACTS: ONE
 - CONTACT DATA
 - (A) TYPE: MALE
 - (B) STYLE: PIN
 - (C) VOLTAGE RATING: 500V PEAK
 - (D) MATERIAL: BRASS
 - (E) FINISH: GOLD OR SILVER PLATE
 - DIELECTRIC: POLYTETRAFLUOROETHYLENE
 - SHELL DATA
 - (A) TYPE: INCLOSING
 - (B) MATERIAL: BRASS
 - (C) FINISH: SILVER PLATE
 - IMPEDANCE: 50 OHMS NOMINAL
 - POLORIZATION; BAYONET
 - LOCKING: TWIST
 - CABLE ACCOMMODATION DATA:
 - (A) COAX CABLE: SEE CHART
 - MATES WITH BNC RECEPTACLE.

NOTE:
APPROXIMATE ASSEMBLED LENGTH 1 1/16

B	COMPLETELY REVISED PER EMN, 14019	5.7.65	14019	dr.	ACB	REQ.	ITEM	PART NO.	CARMARZDA	DESCRIPTION	SYMBOL
A	"REPLACES" COLUMN ADDED	9.16.64	12370	WB	a	—			THE TECHNICAL MATERIEL CORP. MAMARONECK, NEW YORK		
O	ORIGINAL RELEASE FOR PRODUCTION	4-10-64		A.M.	Q	SEE SPEC.			CONNECTOR, PLUG, BNC, CRIMP TYPE		
X	EXPER. RELEASE	4-2-64	1	G. Jensen	Q	MATERIAL					
SYM	DESCRIPTION	DATE	CH. NO.	DRAFTS	CHECKER	ENG. APP.	UNLESS OTHERWISE SPECIFIED DIMENSIONS ARE IN INCHES AND INCLUDE CHEMICALLY APPLIED OR PLATED FINISHES			SCALE	
							TYPE & TEMPER	HEAT TREAT. SPEC.	DRAWN	CHECKED	FINAL APPROVAL
							SEE SPEC.	SEE SPEC.	G. Jensen @ 4-10-64	RAJ	
							FINISH & SPEC. NO.	ELEC. DES. APP.	MECH. DES. APP.	PL-244	B
DECIMALS		FRACTIONS		TOLERANCES		CODE					
.X ± .05		± 1/64		± .01		C	5401-133				
.XXX ± .005		ANGLES		± 0° 30'							