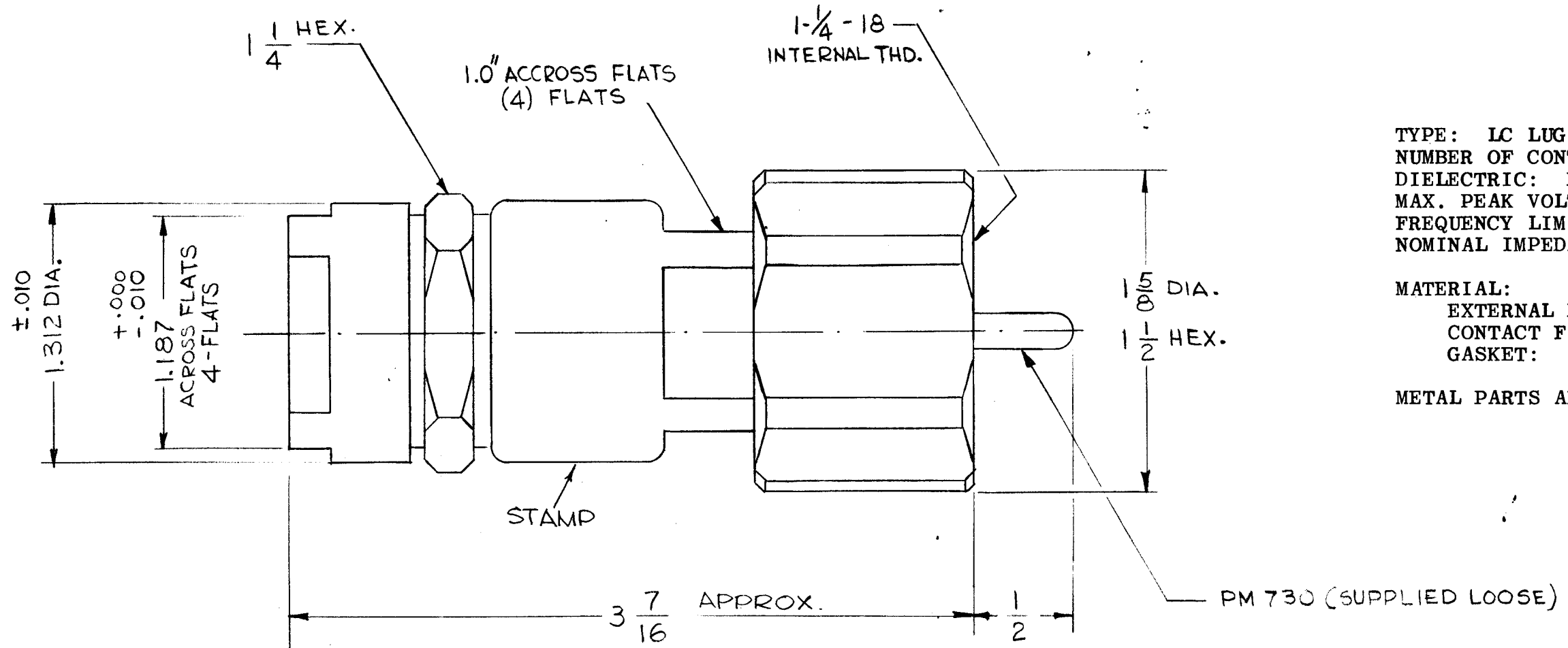


PL214	REVISIONS					
	SYM	DESCRIPTION	DATE	E.M.N. NO.	DRAFT	CHKD
B	REDRAWN & REVISED	7-14-66	16516	GDL	<i>[Signature]</i>	<i>[Signature]</i>



SPECIFICATIONS

TYPE: LC LUG, UG154A/U SUPPLIED WITH TMC PM730
 NUMBER OF CONTACTS: 1 MALE
 DIELECTRIC: PROVIDED BY CABLE (TEFLON)
 MAX. PEAK VOLTAGE: 5000 V
 FREQUENCY LIMITS: 1,000 MHZ
 NOMINAL IMPEDANCE: 50 Ω

MATERIAL:
 EXTERNAL PARTS: MACHINED BRASS
 CONTACT FINGERS: HEAT TREATED, BERYLLIUM COPPER
 GASKET: SILICONE RUBBER

METAL PARTS ARE SILVER PLATED

- NOTE:**
- MATES WITH UG-352B/U
 - FOR USE WITH CABLES RG-17/U, RG-18/U, RG-218, RG-219, RG-35/U & RG-164/U (SEE NOTE 3).
 - THE INSULATION & CENTER CONTACT ARE PROVIDED BY THE DIELECTRIC & CENTER CONDUCTOR OF THE CABLE. ADDITION OF PM-730 SLEEVE ALLOWS THE ACCOMODATION OF RG-35/U AND RG-164/U

MATERIAL		THE TECHNICAL MATERIEL CORP. MAMARONECK, NEW YORK			
FINISH		TITLE PLUG, CONNECTOR "LC" SERIES			
UNLESS OTHERWISE SPECIFIED DIMENSIONS ARE IN INCHES AND INCLUDE CHEMICALLY APPLIED OR PLATED FINISHES		DRAWN G.D.L.	DATE 7-14-66	FINAL APPROV. <i>[Signature]</i>	DATE 7/27/66
DECIMALS .X ± .05 .XX ± .01 .XXX ± .005		CHECKED <i>[Signature]</i>	DATE	SHEET PL214	
FRACTIONS ± 1/64 ANGLES ± 0° 30'		ELECT. DES.	DATE	REV. LTR. B	
TOLERANCES		MECH. DES.	DATE	SHEET	

Q'TY./UNIT	MODEL USED ON	ASS'Y. NO.
SCALE	CODE	S401-70-(9212)

NOTES

THE CONTENTS OF THIS DRAWING ARE THE EXCLUSIVE PROPERTY OF THE TECHNICAL MATERIEL CORP. ITS UNAUTHORIZED USE OR REPRODUCTION IN WHOLE OR IN PART IS STRICTLY FORBIDDEN.