

IF IT IS FOUND DESIRABLE TO CHANGE ANY TOLERANCE OR OTHER DETAIL SPECIFIED ON THIS DRAWING NOTIFY THE PURCHASER PROMPTLY.

STANDARD DRAWING

PL-100 A

MAXIMUM ALLOWABLE TOLERANCES HAVE BEEN DETERMINED AND DEVIATIONS WILL BE CAUSE FOR REJECTION. REMOVE ALL BURRS AND SHARP EDGES

USED ON

MODEL

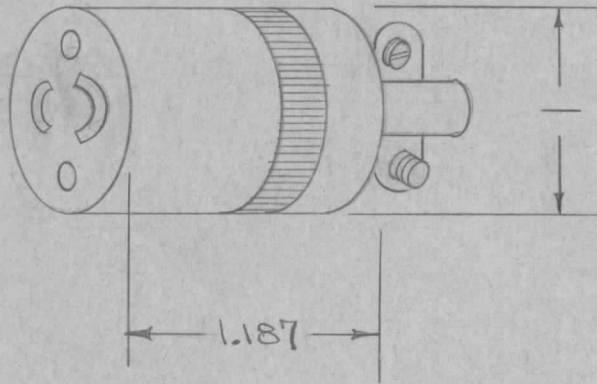
PROJECT NO.

ASS'Y. NO.

DATE

SPECIFICATIONS

- NUMBER OF CONTACTS- 2
- CURRENT RATING- 10 AMPS AT 250 VAC
15 AMPS AT 125 VAX
- SHIELDING-NONE
- POLARIZATION-CONTACT WIDTH
- LOCKING-- BY ROTATION
- CABLE SIZE- 0.218 TO 0.312 DIAMETER
- CONTACTS- PHOSPHER BRONZE, ONE CONTACT
ZINC PLATE
- BODY MATERIAL- BAKELITE, TYPE CFG PER
MIL-M-14F
- CABLE CLAMP- COLD ROLLED STEEL, STATUARY
BRONZE FINISH
- MATING CONNECTOR-TMC JJ-100



MATING JJ-100
REF: HUBBEL MFG CO. CAT. NO. 7464

REQ.	ITEM	PART NO.	DESCRIPTION	SYMBOL
			THE TECHNICAL MATERIEL CORP. MAMARONECK, NEW YORK	
		STOCK SIZE	PLUG, FEMALE TWIST	
		MATERIAL	LOCK	
		WEIGHT PER PC.	C.D.D. 6-28-54	G.T.O.
		TYPE & TEMPER	DRAWN	ELEC. DES. APP. MECH. DES. APP.
		HEAT TREAT. SPEC.	CHECKED	FINAL APPROVAL
		FINISH & SPEC. NO.		PL-100 A

A	1	UPDATED DWG.	3/25/64	11110	AM.	@	jc
#	#	REDRAWN - NO CHANGE	6/28/54	#	C.D.D.	JAL	jc
ISSUE	ITEM	CHANGED FROM	DATE	CN. NO.	DRAFTS	CHECKER	ENG. APP.

TOLERANCES		SCALE	5401-43(7464)
ALL OTHERS	DEC. DIM. ± FRAC. DIM. ± ANGULAR DIM. ±	DRILL, PUNCH, COMMERCIAL STOCK SIZES AND MANUFACTURERS TOLERANCES ARE NOT INCLUDED.	

IF IT IS FOUND DESIRABLE TO CHANGE ANY TOLERANCE OR OTHER DETAIL SPECIFIED ON THIS DRAWING NOTIFY THE PURCHASER PROMPTLY.

STANDARD DRAWING

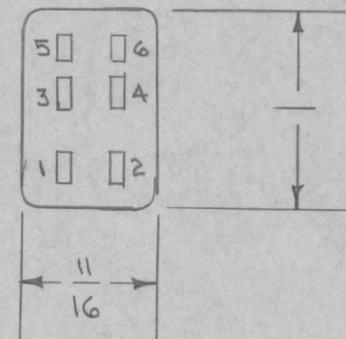
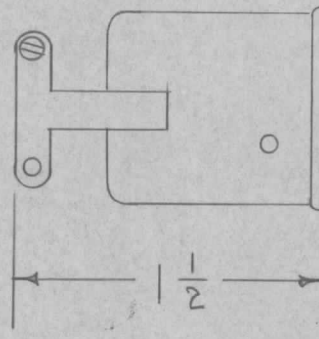
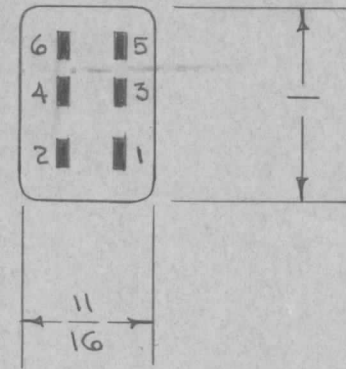
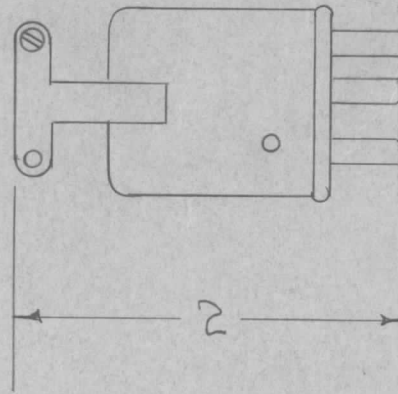
PL-101

MAXIMUM ALLOWABLE TOLERANCES HAVE BEEN DETERMINED AND DEVIATIONS WILL BE CAUSE FOR REJECTION. REMOVE ALL BURRS AND SHARP EDGES

USED ON

MODEL	PROJECT NO.	ASS'Y. NO.	DATE
-------	-------------	------------	------

TMC NO.	CAT. NO	TYPE
PL-101-1	P-306-CCT	MALE
PL-101-2	S-306-CCT	FEMALE



DIMENSIONS FOR REF. ONLY

REF: CINCH JONES MFG. CO.

REQ.	ITEM	PART NO.	DESCRIPTION	SYMBOL
			THE TECHNICAL MATERIEL CORP. MAMARONECK, NEW YORK	
		STOCK SIZE		
			CONNECTOR, 6 PRONG	
		MATERIAL	WEIGHT PER PC.	
		TYPE & TEMPER	C.D.D. 6-29-54	G.T.O. <i>WDE</i>
			DRAWN	ELEC. DES. APP. MECH. DES. APP.
		HEAT TREAT. SPEC.	<i>FALSE</i>	<i>WDE</i>
			CHECKED	FINAL APPROVAL
		FINISH & SPEC. NO.		PL-101

#	#	REDRAWN, NO CHANGE	6/29/54	#	C.D.D.	<i>WDE</i>
ISSUE	ITEM	CHANGED FROM	DATE	CN. NO.	DRAFTS	CHECKER ENG. APP.

TOLERANCES

SCALE $\frac{1}{16}$

DRILL, PUNCH, COMMERCIAL STOCK SIZES AND MANUFACTURERS TOLERANCES ARE NOT INCLUDED.

ALL OTHERS
DEC. DIM. \pm
FRAC. DIM. \pm
ANGULAR DIM. \pm

IF IT IS FOUND DESIRABLE TO CHANGE ANY TOLERANCE OR OTHER DETAIL SPECIFIED ON THIS DRAWING NOTIFY THE PURCHASER PROMPTLY.

STANDARD DRAWING

PL-102

MAXIMUM ALLOWABLE TOLERANCES HAVE BEEN DETERMINED AND DEVIATIONS WILL BE CAUSE FOR REJECTION.
REMOVE ALL BURRS AND SHARP EDGES

USED ON

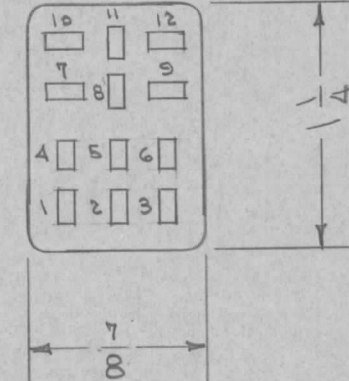
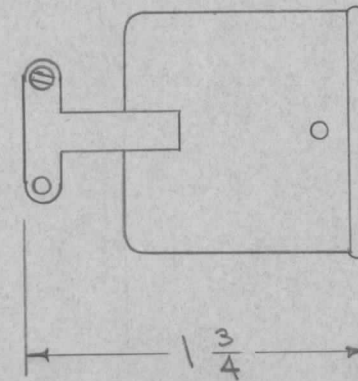
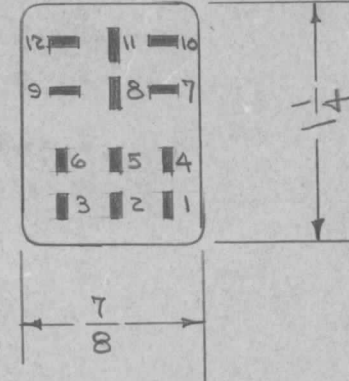
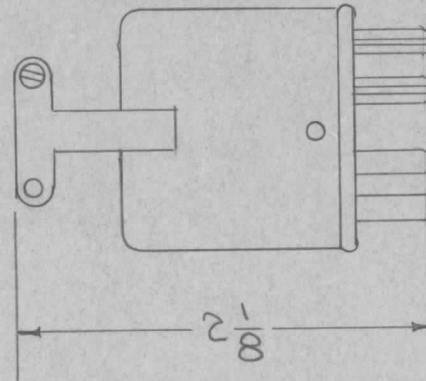
MODEL

PROJECT NO.

ASS'Y. NO.

DATE

T.M.C. No.	CAT. NO.	TYPE
PL-102-1	P-312-CCT	MALE
PL-102-2	S-312-CCT	FEMALE



DIMENSIONS FOR REF. ONLY

REF: CINCH JONES CO.

REQ.	ITEM	PART NO.	DESCRIPTION	SYMBOL
			THE TECHNICAL MATERIEL CORP. MAMARONECK. NEW YORK	
		STOCK SIZE	CONNECTOR, 12 PRONG	
		MATERIAL	WEIGHT PER PC.	
		TYPE & TEMPER	CD.D. 6-29-54	G.T.O. <i>WDE</i>
			DRAWN	ELEC. DES. APP. MECH. DES. APP.
			<i>FAID</i>	<i>WDE</i>
		HEAT TREAT. SPEC.	CHECKED	FINAL APPROVAL
		FINISH & SPEC. NO.		PL-102

#	#	REDRAWN - NO CHANGE	6/29/54	#	CD.D.	<i>FAID</i>	<i>WDE</i>
ISSUE	ITEM	CHANGED FROM	DATE	CN. NO.	DRAFTS	CHECKER	ENG. APP.

TOLERANCES		SCALE	#
ALL OTHERS	DEC. DIM. ± FRAC. DIM. ± ANGULAR DIM. ±	DRILL, PUNCH, COMMERCIAL STOCK SIZES AND MANUFACTURERS TOLERANCES ARE NOT INCLUDED.	

IF IT IS FOUND DESIRABLE TO CHANGE ANY TOLERANCE OR OTHER DETAIL SPECIFIED ON THIS DRAWING NOTIFY THE PURCHASER PROMPTLY.

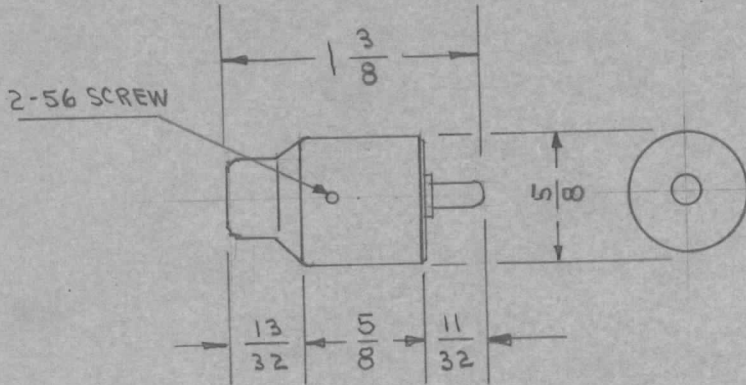
STANDARD DRAWING

PL-103

MAXIMUM ALLOWABLE TOLERANCES HAVE BEEN DETERMINED AND DEVIATIONS WILL BE CAUSE FOR REJECTION. REMOVE ALL BURRS AND SHARP EDGES

USED ON

MODEL	PROJECT NO.	ASS'Y. NO.	DATE
TMC NO.	CAT. NO.	NUMBER PRONGS	PRONG ARRANGEMENT
PL-103-1	801 PS	1	
PL-103-2	802 PS	2	
PL-103-3	803 PS	3	
PL-103-4	804 PS	4	
PL-103-5	805 PS	5	



DIMENSIONS FOR REFERENCE ONLY

NOTE: FOR MATING RECEPTACLE SEE JJ-102.

REF.: ALDEN PRODUCTS CO.

REQ.	ITEM	PART NO.	DESCRIPTION	SYMBOL
//			THE TECHNICAL MATERIEL CORP. MAMARONECK, NEW YORK	
STOCK SIZE			CONNECTOR, SHIELDED	
//		//		
MATERIAL		WEIGHT PER PC.		
//				
TYPE & TEMPER			C.D.D. 8-18-52	MB 8/21/52
//			DRAWN	ELEC. DES. APP.
//			HEAT TREAT. SPEC.	MECH. DES. APP.
//			FINISH & SPEC. NO.	
			CHECKED	FINAL APPROVAL
				PL-103

ISSUE	ITEM	CHANGED FROM	DATE	CN. NO.	DRAFTS	CHECKER	ENG. APP.
TOLERANCES		SCALE		FULL			
ALL OTHERS	DEC. DIM. ± FRAC. DIM. ± ANGULAR DIM. ±	DRILL, PUNCH, COMMERCIAL STOCK SIZES AND MANUFACTURERS TOLERANCES ARE NOT INCLUDED.					

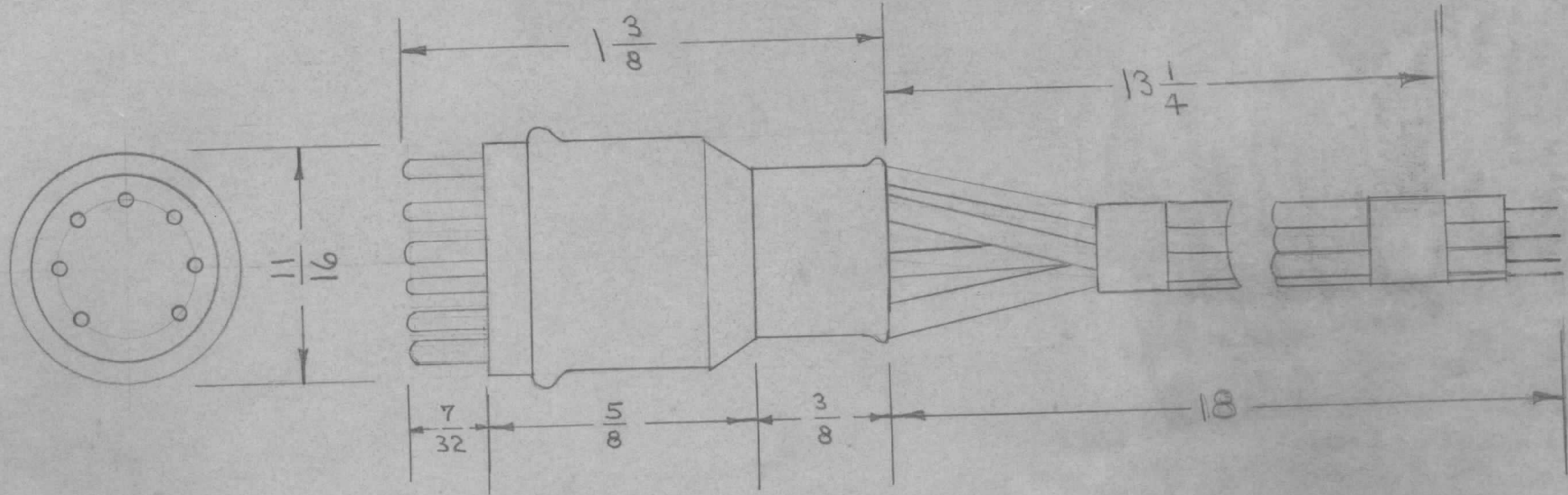
PL-104

IF IT IS FOUND DESIRABLE TO CHANGE ANY TOLERANCE OR OTHER DETAIL SPECIFIED ON THIS DRAWING NOTIFY THE PURCHASER PROMPTLY.

MAXIMUM ALLOWABLE TOLERANCES HAVE BEEN DETERMINED AND DEVIATIONS WILL BE CAUSE FOR REJECTION. REMOVE ALL BURRS AND SHARP EDGES

USED ON

MODEL	PROJECT NO.	ASS'Y. NO.	DATE
DMK4	140	A-129	8-27-52



TMC No.	CAT. No.	NUMBER OF LEADS
PL-104 -1	907	NONE
PL-104-2	907C	7

DIMENSIONS FOR REF. ONLY.

REF. ALDEN PRODUCTS CO.

NOTE: LEADS ARE STD. 22 GA. STRANDED INSULATED WIRE, FREE END STRIPPED AND TINNED 3/8".

REQ.	ITEM	PART NO.	DESCRIPTION	SYMBOL
			THE TECHNICAL MATERIEL CORP. MAMARONECK, NEW YORK	
			PLUG, MINIATURE 7 PIN	
			C.D.D. 8-26-52	
			DRAWN	ELEC. DES. APP.
			MECH. DES. APP.	
			CHECKED	FINAL APPROVAL
				PL-104

ISSUE	ITEM	CHANGED FROM	DATE	CN. NO.	DRAFTS	CHECKER	ENG. APP.
TOLERANCES			SCALE TWICE SIZE				
ALL OTHERS	DEC. DIM. ± FRAC. DIM. ± ANGULAR DIM. ±		DRILL, PUNCH, COMMERCIAL STOCK SIZES AND MANUFACTURERS TOLERANCES ARE NOT INCLUDED.				

IF IT IS FOUND DESIRABLE TO CHANGE ANY TOLERANCE OR OTHER DETAIL SPECIFIED ON THIS DRAWING NOTIFY THE PURCHASER PROMPTLY.

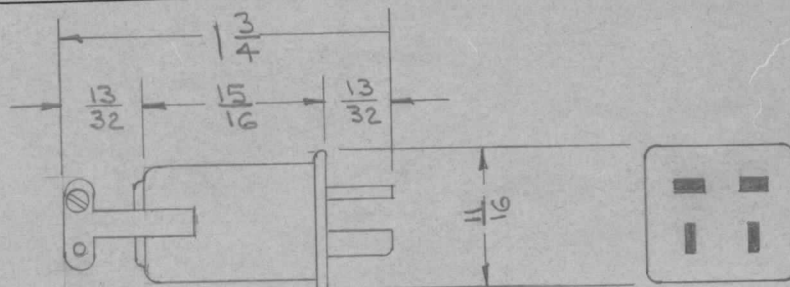
RELEASED

PL-106

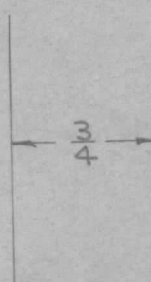
MAXIMUM ALLOWABLE TOLERANCES HAVE BEEN DETERMINED AND DEVIATIONS WILL BE CAUSE FOR REJECTION. REMOVE ALL BURRS AND SHARP EDGES

USED ON

MODEL	PROJECT NO.	ASS'Y. NO.	DATE
AMD-1	144	A-239	12-9-52

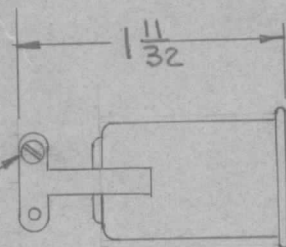


TMC NO	CINCH	TYPE
PL-106-1	P-304-CCT	MALE
PL-106-2	S-304-CCT	FEMALE



DIMENSIONS FOR REF. ONLY

4-36 SCR.
2 REQ.



REF: CINCH MFG. CORP.

REQ.	ITEM	PART NO.	DESCRIPTION	SYMBOL
			THE TECHNICAL MATERIEL CORP. MAMARONECK, NEW YORK	
		STOCK SIZE	CONNECTOR 4 PRONG	
		MATERIAL	WEIGHT PER PC.	
		TYPE & TEMPER		
		HEAT TREAT. SPEC.		
		FINISH & SPEC. NO.		

Handwritten notes in the table:
 - Part No: *16*
 - Material: *16*
 - Type & Temper: *11*
 - Heat Treat. Spec.: *11*
 - Finish & Spec. No.: *11*
 - Description: *CONNECTOR 4 PRONG*
 - Date: *12-9-52*
 - Drawn: *C.D.D. 12-16-52*
 - ELEC. DES. APP.: *[Signature]*
 - MECH. DES. APP.: *[Signature]*
 - Final Approval: *[Signature]*

ISSUE	ITEM	CHANGED FROM	DATE	CN. NO.	DRAFTS	CHECKER	ENG. APP.

TOLERANCES

SCALE *1/16"*

DRILL, PUNCH, COMMERCIAL STOCK SIZES AND MANUFACTURERS TOLERANCES ARE NOT INCLUDED.

ALL OTHERS
 DEC. DIM. \pm
 FRAC. DIM. \pm
 ANGULAR DIM. \pm

PL-106

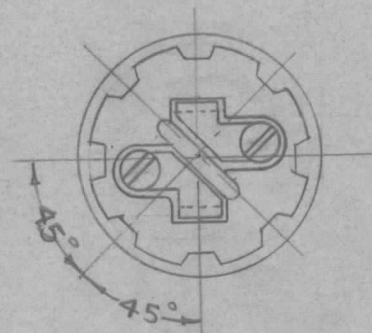
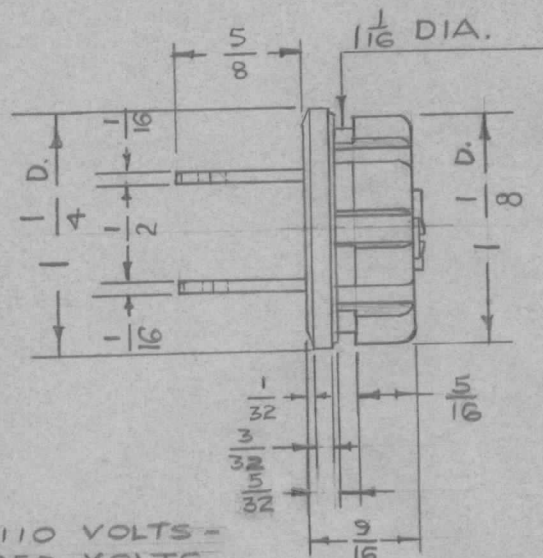
IF IT IS FOUND DESIRABLE TO CHANGE ANY TOLERANCE OR OTHER DETAIL SPECIFIED ON THIS DRAWING NOTIFY THE PURCHASER PROMPTLY.

MAXIMUM ALLOWABLE TOLERANCES HAVE BEEN DETERMINED AND DEVIATIONS WILL BE CAUSE FOR REJECTION. REMOVE ALL BURRS AND SHARP EDGES

PL-108

USED ON

MODEL	PROJECT NO.	ASS'Y. NO.	DATE
TWR-115	151	A-220	10-16-52



NOTE: 15 AMP.-110 VOLTS -
OR: 10 AMP.-250 VOLTS.

DIMENSIONS FOR REF. ONLY
REF.: AMPHENOL CAT. NO. 61-M

REQ.	ITEM	PART NO.	DESCRIPTION	SYMBOL
		— ff —	THE TECHNICAL MATERIEL CORP. MAMARONECK, NEW YORK	
		STOCK SIZE		
		BAKELITE — ff —	MALE PLUG	
		MATERIAL	WEIGHT PER PC.	
		— ff —		
		TYPE & TEMPER	10-16-52	W.D.C. 11-8
		— ff —	DRAWN	ELEC. DES. APP. MECH. DES. APP.
		HEAT TREAT. SPEC.	CHECKED	FINAL APPROVAL
		— ff —		PL-108
		FINISH & SPEC. NO.		

ISSUE	ITEM	CHANGED FROM	DATE	CN. NO.	DRAFTS	CHECKER	ENG. APP.
TOLERANCES			SCALE FULL SIZE				
ALL OTHERS	DEC. DIM. ± FRAC. DIM. ± ANGULAR DIM. ±	DRILL, PUNCH, COMMERCIAL STOCK SIZES AND MANUFACTURERS TOLERANCES ARE NOT INCLUDED.					

PL 112 B

IF IT IS FOUND DESIRABLE TO CHANGE ANY TOLERANCE OR OTHER DETAIL SPECIFIED ON THIS DRAWING NOTIFY THE PURCHASER PROMPTLY.

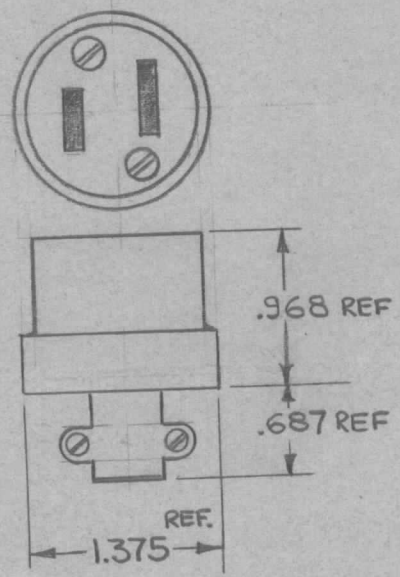
MAXIMUM ALLOWABLE TOLERANCES HAVE BEEN DETERMINED AND DEVIATIONS WILL BE CAUSE FOR REJECTION. REMOVE ALL BURRS AND SHARP EDGES

USED ON			
MODEL	PROJECT NO.	ASS'Y. NO.	DATE

TMC NO	CAT NO.	CORD HOLE INCHES
PL 112-1	7259	.296 To .406
PL 112-2	7257	.406 To .625

SPECIFICATIONS

QUAN. OF CONTACTS: 2
 QUAN. OF MATING ENDS: 1
CONTACT DATA:
 TYPE: FEMALE
 CURRENT RATING: 10A @ 250V
 15A @ 125V
 POLARIZATION: CONTACT SIZE
 CABLE ACCOMMODATION: SEE CHART
 FUSE ACCOMMODATION: NONE
 CORD PROTECTOR: NONE



STANDARD DRAWING

REQ.	ITEM	PART NO.	DESCRIPTION	SYMBOL
			THE TECHNICAL MATERIEL CORP. MAMARONECK. NEW YORK	
			CONNECTOR, PLUG	
			FEMALE, A.C.	
			DRAWN	ELEC. DES. APP. MECH. DES. APP.
			CHECKED	FINAL APPROVAL
				PL 112 B

ISSUE	ITEM	CHANGED FROM	DATE	CN. NO.	DRAFTS	CHECKER	ENG. APP.
B	2	DICT. & SPECS ADDED TITLE REVISED, MFR. DELE	10.27.64	12779	WBS	WBS	gc
A	1	CAT. NOS. ADDED	7/29/53	1	JAD		

TOLERANCES		SCALE
ALL OTHERS	DEC. DIM. ± FRAC. DIM. ± ANGULAR DIM. ±	S401-43
DRILL, PUNCH, COMMERCIAL STOCK SIZES AND MANUFACTURERS TOLERANCES ARE NOT INCLUDED.		

IF IT IS FOUND DESIRABLE TO CHANGE ANY TOLERANCE OR OTHER DETAIL SPECIFIED ON THIS DRAWING NOTIFY THE PURCHASER PROMPTLY.

STANDARD DRAWING

PL-115

MAXIMUM ALLOWABLE TOLERANCES HAVE BEEN DETERMINED AND DEVIATIONS WILL BE CAUSE FOR REJECTION. REMOVE ALL BURRS AND SHARP EDGES

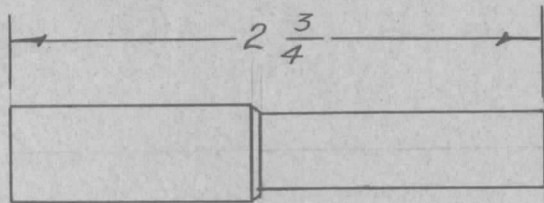
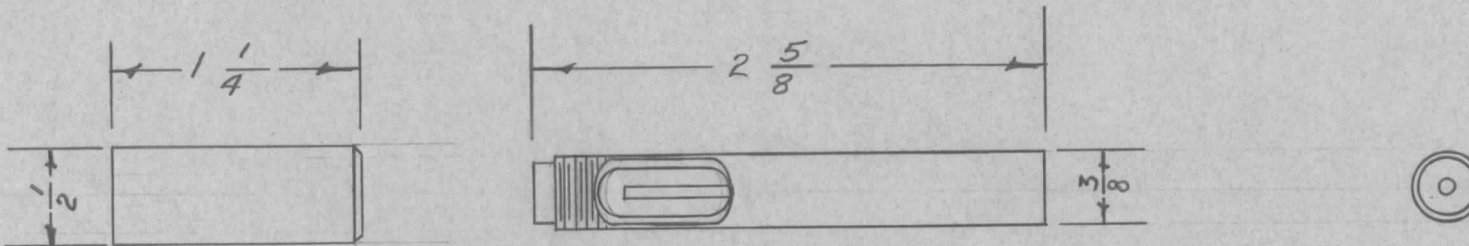
USED ON

MODEL

PROJECT NO.

ASS'Y. NO.

DATE



DIM. FOR REF. ONLY

REF.: NATIONAL ELECTRICAL MACH. SHOPS, INC. #968

REQ.	ITEM	PART NO.	DESCRIPTION	SYMBOL						
//			THE TECHNICAL MATERIEL CORP. MAMARONECK, NEW YORK							
STOCK SIZE										
//		//	PLUG, COAXIAL							
MATERIAL		WEIGHT PER PC.								
		//	161-4-54							
ISSUE	ITEM	CHANGED FROM	DATE	CN. NO.	DRAFTS	CHECKER	ENG. APP.	DRAWN	ELEC. DES. APP.	MECH. DES. APP.
TOLERANCES			SCALE //			TYPE & TEMPER				
ALL OTHERS	DEC. DIM. \pm FRAC. DIM. \pm ANGULAR DIM. \pm		DRILL, PUNCH, COMMERCIAL STOCK SIZES AND MANUFACTURERS TOLERANCES ARE NOT INCLUDED.			HEAT TREAT. SPEC.		CHECKED	FINAL APPROVAL	
						FINISH & SPEC. NO.			PL-115	

IF IT IS FOUND DESIRABLE TO CHANGE ANY TOLERANCE OR OTHER DETAIL SPECIFIED ON THIS DRAWING NOTIFY THE PURCHASER PROMPTLY.

STANDARD DRAWING

PL-116

MAXIMUM ALLOWABLE TOLERANCES HAVE BEEN DETERMINED AND DEVIATIONS WILL BE CAUSE FOR REJECTION. REMOVE ALL BURRS AND SHARP EDGES

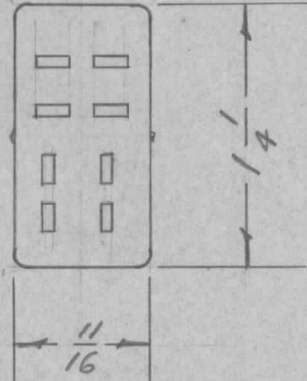
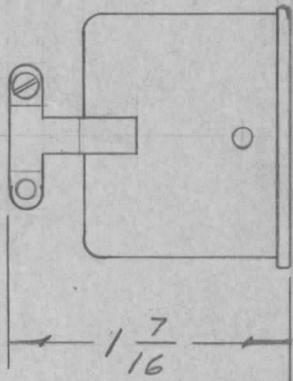
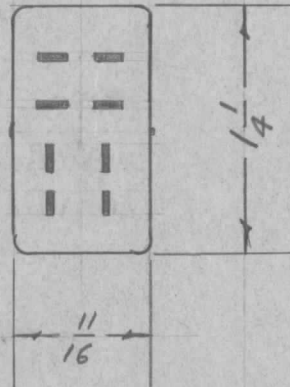
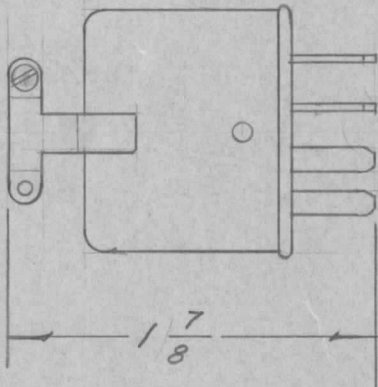
USED ON

MODEL

PROJECT NO.

ASS'Y. NO.

DATE



TMC NO.	CAT. NO.	TYPE
PL-116-1	P-308-CCT	MALE
PL-116-2	S-308-CCT	FEMALE

MATING JACK-JJ-127
 DIM. FOR REF. ONLY
 REF.: CINCH-JONES CAT.

REQ.	ITEM	PART NO.	DESCRIPTION	SYMBOL
		//	THE TECHNICAL MATERIEL CORP. MAMARONECK, NEW YORK	
		STOCK SIZE		
		//	CONNECTOR - 8 PRONG	
		//		
		MATERIAL		
		WEIGHT PER PC.		
		//	16 9/14/53	
		TYPE & TEMPER	A. J. J.	WDC
		//	DRAWN	ELEC. DES. APP.
		//	HEAT TREAT. SPEC.	MECH. DES. APP.
		//	CHECKED	FINAL APPROVAL
		//		PL-116
		FINISH & SPEC. NO.		

ISSUE ITEM CHANGED FROM DATE CN. NO. DRAFTS CHECKER ENG. APP.

TOLERANCES

SCALE

ALL OTHERS

DEC. DIM. ±
 FRAC. DIM. ±
 ANGULAR DIM. ±

DRILL, PUNCH, COMMERCIAL STOCK SIZES AND MANUFACTURERS TOLERANCES ARE NOT INCLUDED.

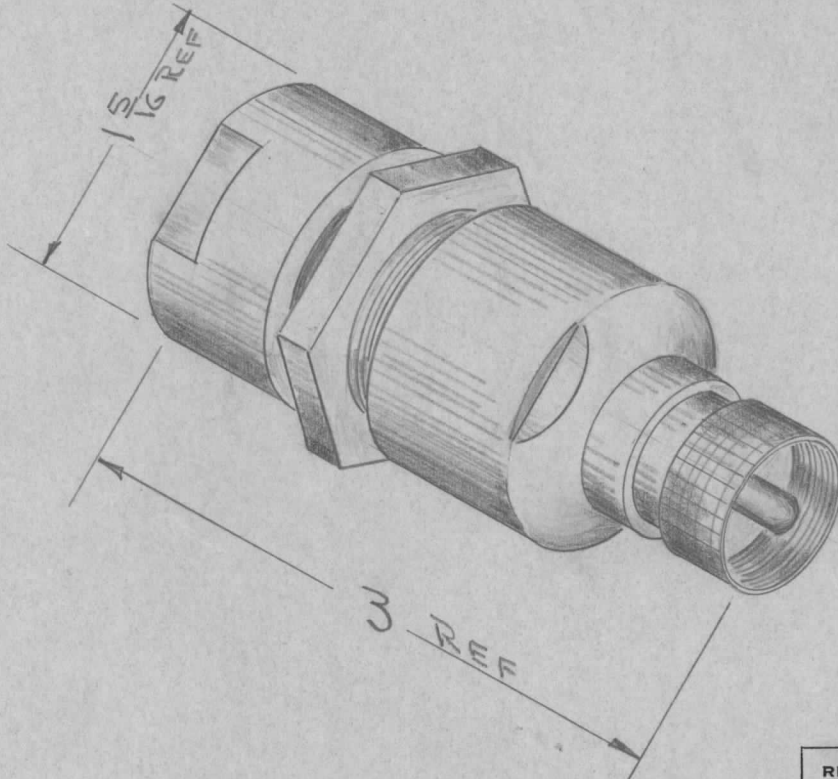
IF IT IS FOUND DESIRABLE TO CHANGE ANY TOLERANCE OR OTHER DETAIL SPECIFIED ON THIS DRAWING NOTIFY THE PURCHASER PROMPTLY.

PL-119

MAXIMUM ALLOWABLE TOLERANCES HAVE BEEN DETERMINED AND DEVIATIONS WILL BE CAUSE FOR REJECTION. REMOVE ALL BURRS AND SHARP EDGES

USED ON

MODEL	PROJECT NO.	ASS'Y. NO.	DATE
-------	-------------	------------	------



SPECIFICATIONS

1. Mfd. to applicable ASES standard specifications for RF Cable connectors.
2. Accepts RG-35/U (.945 max OD) armor covered cable.
3. Mates U.S. Sig. C. S0239, (Navy 49194, Amphenol 83-1R) Connector, receptacle.

REQ.	ITEM	PART NO.	DESCRIPTION	SYMBOL
			THE TECHNICAL MATERIEL CORP. MAMARONECK. NEW YORK	
STOCK SIZE				
			CONNECTOR, ADAPTER, RG-35/U to	
MATERIAL		WEIGHT PER PC.	RG-8,9,10,11/U RF Cables	
TYPE & TEMPER				
			DRAWN <i>JAD</i> 12-17-54	
			ELEC. DES. APP. <i>A. J. J.</i>	
			MECH. DES. APP. <i>1102</i>	
HEAT TREAT. SPEC.			CHECKED	
			FINAL APPROVAL	
FINISH & SPEC. NO.			PL-119	

ISSUE	ITEM	CHANGED FROM	DATE	CN. NO.	DRAFTS	CHECKER	ENG. APP.
-------	------	--------------	------	---------	--------	---------	-----------

TOLERANCES

SCALE S-401-70 - (2427)

ALL OTHERS

DEC. DIM. ±
FRAC. DIM. ±
ANGULAR DIM. ±

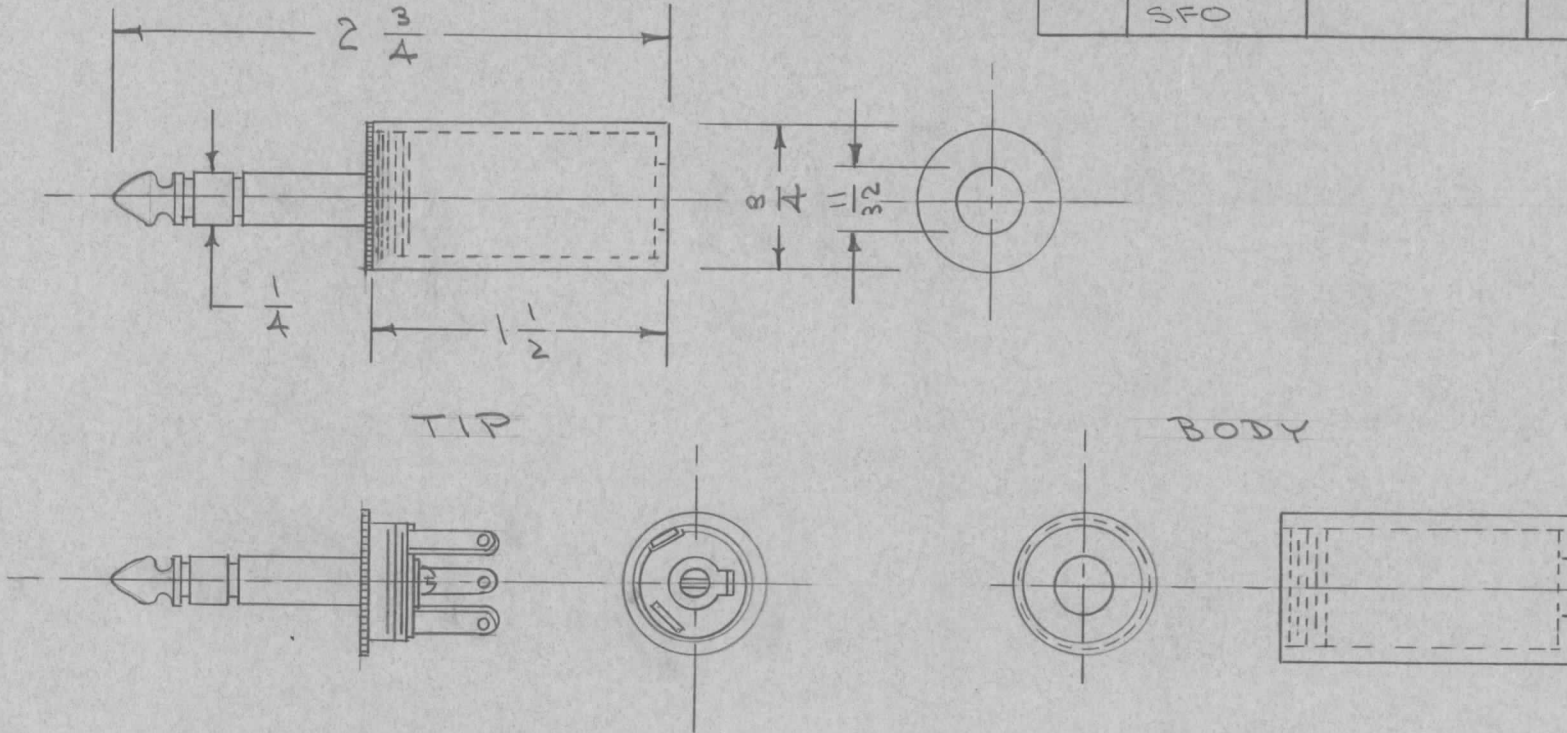
DRILL, PUNCH, COMMERCIAL STOCK SIZES AND MANUFACTURERS TOLERANCES ARE NOT INCLUDED.

IF IT IS FOUND DESIRABLE TO CHANGE ANY TOLERANCE OR OTHER DETAIL SPECIFIED ON THIS DRAWING NOTIFY THE PURCHASER PROMPTLY.

PL-120

MAXIMUM ALLOWABLE TOLERANCES HAVE BEEN DETERMINED AND DEVIATIONS WILL BE CAUSE FOR REJECTION. REMOVE ALL BURRS AND SHARP EDGES

REQ. PER UNIT	USED ON			
	MODEL	PROJECT NO.	ASS'Y. NO.	DATE
	SFO			12-7-54



DIMENSIONS FOR REFERENCE ONLY.

REF: P. R. MALLORY & CO., INC. PLUG NO. 76

REQ.	ITEM	PART NO.	DESCRIPTION	SYMBOL
			THE TECHNICAL MATERIEL CORP. MAMARONECK, NEW YORK	
STOCK SIZE			PLUG, MICROPHONE	
MATERIAL		WEIGHT PER PC.		
TYPE & TEMPER			C.D.D. 12-7-54	WDC
HEAT TREAT. SPEC.			DRAWN	ELEC. DES. APP. MECH. DES. APP.
FINISH & SPEC. NO.			checked	WDC
			FINAL APPROVAL	
			PL-120	

ISSUE	ITEM	CHANGED FROM	DATE	CN. NO.	DRAFTS	CHECKER	ENG. APP.

TOLERANCES

SCALE

ALL OTHERS
DEC. DIM. ±
FRAC. DIM. ±
ANGULAR DIM. ±

DRILL, PUNCH, COMMERCIAL STOCK SIZES AND MANUFACTURERS TOLERANCES ARE NOT INCLUDED.

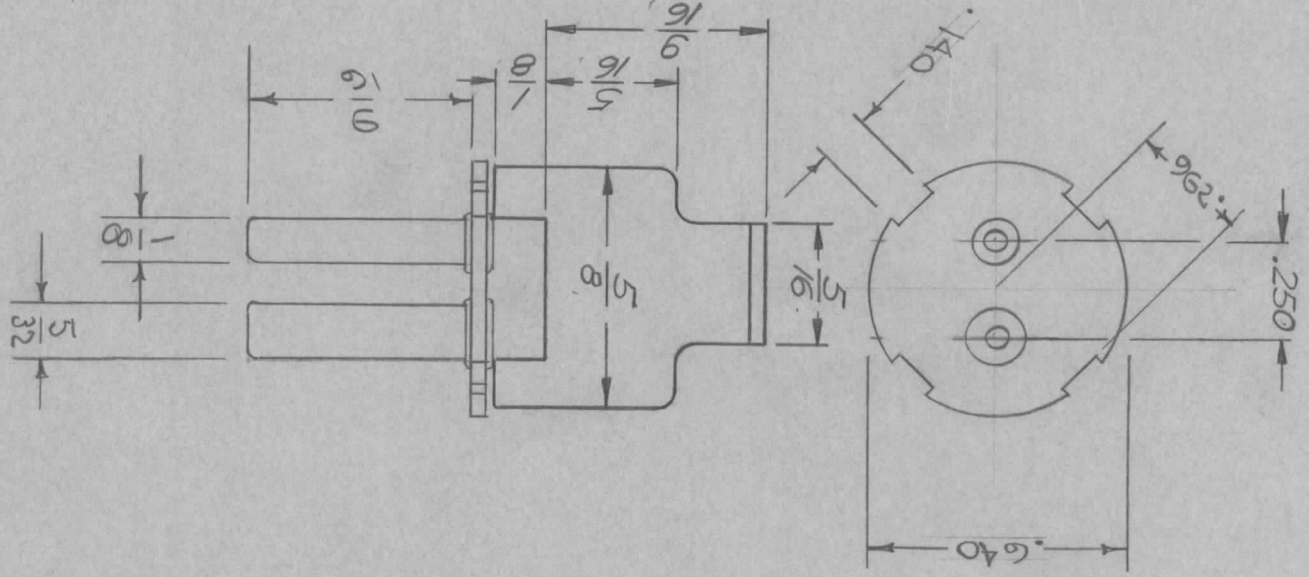
IF IT IS FOUND DESIRABLE TO CHANGE ANY TOLERANCE OR OTHER DETAIL SPECIFIED ON THIS DRAWING NOTIFY THE PURCHASER PROMPTLY.

MAXIMUM ALLOWABLE TOLERANCES HAVE BEEN DETERMINED AND DEVIATIONS WILL BE CAUSE FOR REJECTION. REMOVE ALL BURRS AND SHARP EDGES

STANDARD DRAWING

REQ. PER UNIT	MODEL	PROJECT NO.	ASS'Y. NO.	DATE
---------------	-------	-------------	------------	------

USED ON
 PL-123 A



DIM. FOR REF. ONLY

SHELL REF. PL 124

REF: CINCH MFG. CO. CAT. NO. 2724, 11631

REQ. ITEM	PART NO.	DESCRIPTION	SYMBOL
THE TECHNICAL MATERIEL CORP.			
MAMARONECK.			
NEW YORK			
PLUG, BATTERY TYPE			
W/SHELL AND LINER			
DATE	CN. NO.	DRAFTS CHECKER	ENG. APP.
12/14	19151	K.H. JAC	F.B. JAC
CHANGED FROM	SCALE		
TOLERANCES	TOLERANCES ARE NOT INCLUDED.		
DEC. DIM. \pm	ALL OTHERS		
FRAC. DIM. \pm	ANGULAR DIM. \pm		
ISSUE ITEM	CHANGED FROM	DATE	CN. NO.
A	REV. TO INCL. PL 124	12/14	19151
FINISH & SPEC. NO.			
HEAT TREAT. SPEC.			
CHECKED			
FINAL APPROVAL			
DRAWN			
ELEC. DES. APP.			
MECH. DES. APP.			
PL-123 A			

IF IT IS FOUND DESIRABLE TO CHANGE ANY TOLERANCE OR OTHER DETAIL SPECIFIED ON THIS DRAWING NOTIFY THE PURCHASER PROMPTLY.

STANDARD DRAWING

PL-127 B

MAXIMUM ALLOWABLE TOLERANCES HAVE BEEN DETERMINED AND DEVIATIONS WILL BE CAUSE FOR REJECTION. REMOVE ALL BURRS AND SHARP EDGES

REQ. PER UNIT

USED ON

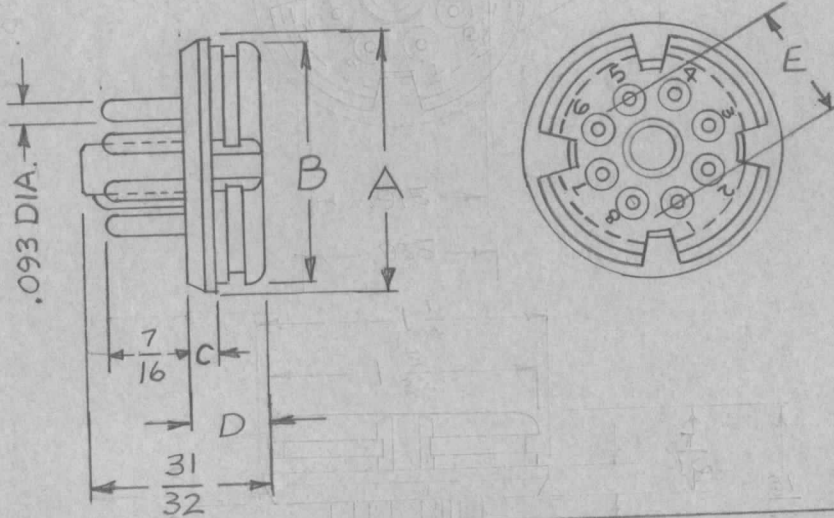
MODEL

PROJECT NO.

ASS'Y. NO.

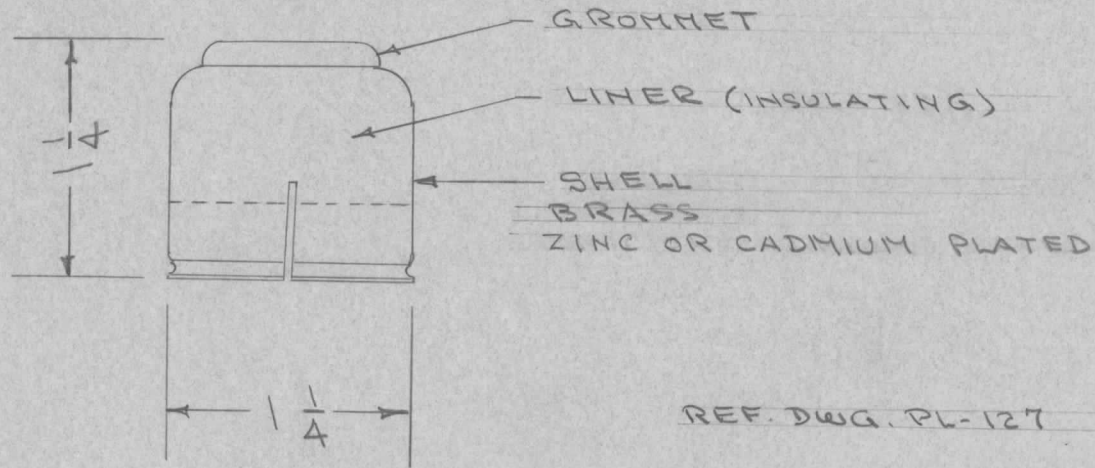
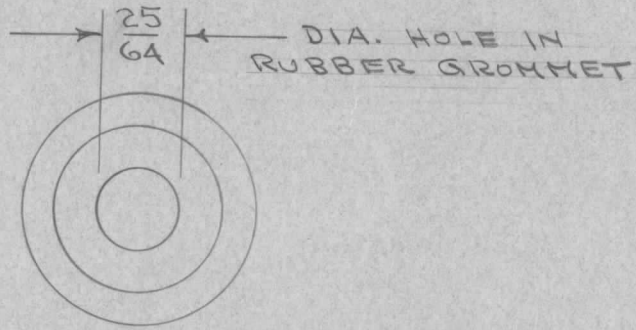
DATE

TMC P/N	S401-71 MFG P/N	S401-76 MFG P/N	CONTACTS	VOLTAGE RATING	CUR. RATING	A	B	C	D	E
				RMS AT SEA LEVEL	RATING AMPS					
PL127	86-CP8T	16022	8 OCTAL	1250	5	1-1/4	1-5/32	.145	7/16	.687
PL127-2	86-CP11T		11	500	5	1-1/4	1-5/32	.145	7/16	.750



REQ.	ITEM	PART NO.		DESCRIPTION	SYMBOL		
				THE TECHNICAL MATERIEL CORP. MAMARONECK. NEW YORK			
		STOCK SIZE		CONNECTOR, PLUG, MALE			
		MICA FILLED PHENOLIC					
		MATERIAL	WEIGHT PER PC.				
B	REV. & UPDATED	4.30.68	18896	W.S.	WV FB		
A	REF: CLARIFIED MATERIALS CLASSIFIED	4-28-66	16168	WHD	WV QC		
ISSUE	ITEM	CHANGED FROM	DATE	CN. NO.	DRAFTS	CHECKER	ENG. APP.
TOLERANCES		SCALE					
ALL OTHERS	DEC. DIM. ± FRAC. DIM. ± ANGULAR DIM. ±	DRILL, PUNCH, COMMERCIAL STOCK SIZES AND MANUFACTURERS TOLERANCES ARE NOT INCLUDED.					
				HEAT TREAT. SPEC.	FINISH & SPEC. NO.		
				DRAWN	ELEC. DES. APP.	MECH. DES. APP.	
				CDD. 5/31/55	WV	WV	
				CHECKED	FINAL APPROVAL		
					G.T.O		
					PL-127 B		

REQ. PER UNIT	USED ON			PL-129
	MODEL	ASS'Y. NO.	DATE	



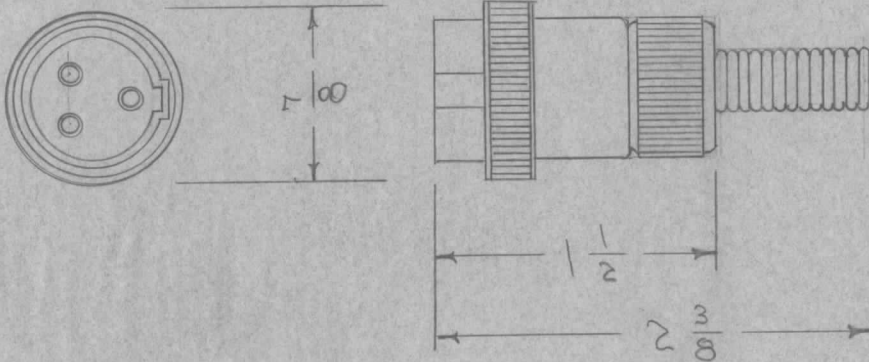
REF. DWG. PL-127

REF: CINCH MFG. CORP. CAT. # 14986

REQ.	ITEM	PART NO.	DESCRIPTION			SYMBOL	
			THE TECHNICAL MATERIEL CORP. MAMARONECK, NEW YORK				
			STOCK SIZE				
			SHELL, PLUG				
			MATERIAL				
ISSUE	ITEM	CHANGED FROM	DATE	CH. NO.	DRAFTS	CHECKER	ENG. APP.
TOLERANCES			SCALE:				
DEC. DIM. ±			MAXIMUM ALLOWABLE TOLERANCES HAVE BEEN DETERMINED AND ANY DEVIATIONS WILL BE CAUSE FOR REJECTION. REMOVE ALL BURRS AND SHARP EDGES				
FRAC. DIM. ±							
ANGULAR DIM. ±							
TYPE & TEMPER		HEAT TREAT. SPEC.		DRAWN		CHECKED	
FINISH & SPEC. NO.		ELEC. DES. APP.		MECH. DES. APP.		G.T.O.	
						PL-129	

STANDARD DRAWING

REQ. PER UNIT	USED ON			PL-132
	MODEL	ASS'Y. NO.	DATE	



REF. DWG. - JJ-133

DIM. FOR REF. ONLY

TYPE DESIGNATION TO BE IN FOLLOWING FORM

PL-132-3
 TYPE NUMBER NO. CONTACTS

REF: AMERICAN PHENOLIC CORP.

3 CONTACT - 91MC3M 4 CONTACT 91MC4M

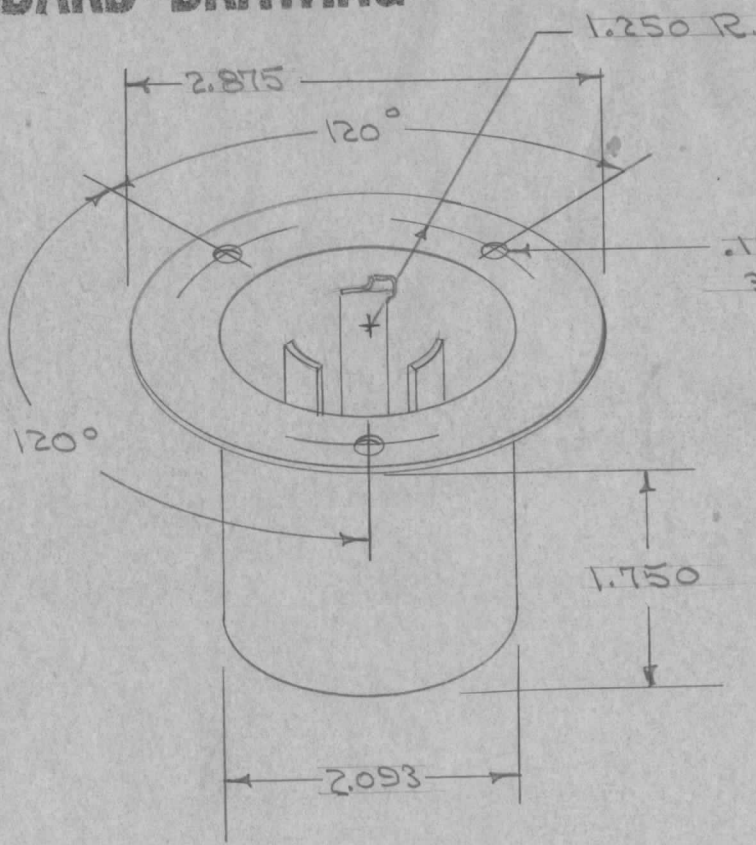
ISSUE	ITEM	CHANGED FROM	DATE	CH. NO.	DRAFTS	CHECKER	ENG. APP.	REQ.	ITEM	PART NO.	DESCRIPTION	SYMBOL	
											THE TECHNICAL MATERIEL CORP. MAMARONECK, NEW YORK PLUG, MALE MICROPHONE		
										STOCK SIZE			
										MATERIAL			
											CD 11/30/55 JAB		
											DRAWN 23	A.T.T. FINAL APPROVAL	
											TYPE & TEMPER CHROME PLATE	PL-132	
											FINISH & SPEC. NO. ELEC. DES. APP.	MECH. DES. APP.	

TOLERANCES
 DEC. DIM. ±
 FRAC. DIM. ±
 ANGULAR DIM. ±

SCALE:
 MAXIMUM ALLOWABLE TOLERANCES HAVE BEEN DETERMINED AND ANY DEVIATIONS WILL BE CAUSE FOR REJECTION.
 REMOVE ALL BURRS AND SHARP EDGES

STANDARD DRAWING

REQ. PER UNIT	USED ON			PL-133	A
	MODEL	ASS'Y. NO.	DATE		



TYPE	DESCRIPTION
NG	NO GROUND
WG	WITH GROUND SHUNT

PL-133-NG
TMC NO TYPE

(IF DESIRED WITH GROUND SHUNT FROM ONE CONTACT TO CASING, ADD LETTER "G" TO CATALOGUE NUMBER)

20 A. 250 V. AC OR DC
10 A. 575 V AC

NOTE:
DIMENSIONS ARE FOR REFERENCE ONLY.

REF. DWG. PL-134

REF: HARVEY HUBBELL INC. CAT. No. 7327

							REQ. ITEM	PART NO.	DESCRIPTION	SYMBOL	
									THE TECHNICAL MATERIEL CORP. MAMARONECK. NEW YORK		
							STOCK SIZE		PLUG, 20A-3 WIRE - LOCKING TYPE - POLARIZED		
							MATERIAL				
A	ADD DIMENSION NOTE	11/2/66	17/56	RME	PCB	PC					
ISSUE	ITEM	CHANGED FROM	DATE	CH. NO.	DRAFTS	CHECKER	ENG. APP.				
TOLERANCES			SCALE:				DRAWN		CHECKED		FINAL APPROVAL
DEC. DIM. ± FRAC. DIM. ± ANGULAR DIM. ±			MAXIMUM ALLOWABLE TOLERANCES HAVE BEEN DETERMINED AND ANY DEVIATIONS WILL BE CAUSE FOR REJECTION. REMOVE ALL BURRS AND SHARP EDGES				TYPE & TEMPER HEAT TREAT. SPEC.		ELEC. DES. APP.		MECH. DES. APP.
							FINISH & SPEC. NO.		0.1P		PL-133
									A. J. J.		A

STANDARD DRAWING

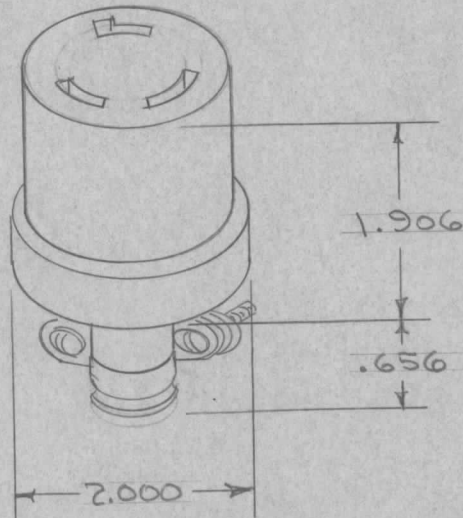
REQ. PER UNIT	USED ON			PL-134	Ø
	MODEL	ASS'Y. NO.	DATE		

TYPE	DESCRIPTION
NG	NOT GROUNDED
WG	WITH GROUND SHUNT

PL-134-NG
 TMC NO. TYPE

20 A. 250 V AC OR DC
 10 A. 600 V AC

ADJUSTABLE CORD GRIP
 CORD DIA. - .437 TO .750



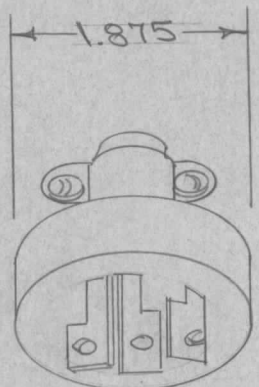
(IF DESIRED WITH GROUND SHUNT)
 ADD LETTER "G" TO CAT. NO.

REF. DWG. PL-133 & PL-135

REF: HARVEY HUBBELL INC. CAT. NO. 7313

							REQ. ITEM	PART NO.	DESCRIPTION	SYMBOL
									THE TECHNICAL MATERIEL CORP. MAMARONECK, NEW YORK	
							STOCK SIZE		CONNECTOR, 3 WIRE	
							MATERIAL		LOCKING TYPE POLARIZED	
Ø	ORIGINAL RELEASE	9/1/65	Ø					COD 17/8/65 DRAWN CHECKED FINAL APPROVAL PL-134 Ø		
ISSUE	ITEM	CHANGED FROM	DATE	CH. NO.	DRAFTS	CHECKER	ENG. APP.			
TOLERANCES			SCALE:				TYPE & TEMPER		HEAT TREAT. SPEC.	
DEC. DIM. ±			MAXIMUM ALLOWABLE TOLERANCES HAVE BEEN DETERMINED AND ANY DEVIATIONS WILL BE CAUSE FOR REJECTION.							
FRAC. DIM. ±			REMOVE ALL BURRS AND SHARP EDGES							
ANGULAR DIM. ±							FINISH & SPEC. NO.		ELEC. DES. APP. MECH. DES. APP.	

REQ. PER UNIT	USED ON			PL-135
	MODEL	ASS'Y. NO.	DATE	



20 AMP. 250 V. AC OR DC.
10 AMP 600V AC.

ADJUSTABLE CORD GRIP.
CORD DIA. .437 TO .750

TYPE	DESCRIPTION
NG	NOT GROUNDED
WG	WITH GROUND

PL-135 - NG
TMC No. TYPE

(IF DESIRED GROUNDED ADD LETTER "G" TO CAT NO.)

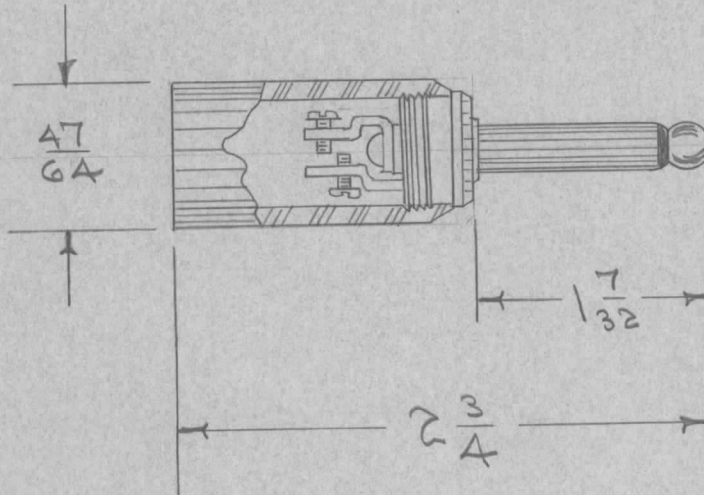
REF. DWG. PL-134

REF: HARVEY HUBBELL INC. CAT. NO. 9965

ISSUE	ITEM	CHANGED FROM	DATE	CH. NO.	DRAFTS	CHECKER	ENG. APP.	REQ. ITEM	PART NO.	DESCRIPTION	SYMBOL	
										THE TECHNICAL MATERIEL CORP. MAMARONECK, NEW YORK CONNECTOR, 3 WIRE LOCKING TYPE, POLARIZED		
									STOCK SIZE			
									MATERIAL			
										CDW	fdk	SPM
TOLERANCES			SCALE:					TYPE & TEMPER	HEAT TREAT. SPEC.	DRAWN	CHECKED	FINAL APPROVAL
DEC. DIM. ± FRAC. DIM. ± ANGULAR DIM. ±			MAXIMUM ALLOWABLE TOLERANCES HAVE BEEN DETERMINED AND ANY DEVIATIONS WILL BE CAUSE FOR REJECTION. REMOVE ALL BURRS AND SHARP EDGES									PL-135
								FINISH & SPEC. NO.		ELEC. DES. APP.	MECH. DES. APP.	

STANDARD DRAWING

REQ. PER UNIT	USED ON			PL-137
	MODEL	ASS'Y. NO.	DATE	



PL-137-RS
 TMC NO SHELL COLOR

BS = BLACK PLASTIC SHELL
 RS = RED PLASTIC SHELL

REF: TRIMM INC. NO 511 OR EQUIVALENT

								REQ. ITEM	PART NO.	DESCRIPTION	SYMBOL		
										THE TECHNICAL MATERIEL CORP. MAMARONECK. NEW YORK			
								STOCK SIZE		PHONE PLUG			
								MATERIAL					
ISSUE	ITEM	CHANGED FROM	DATE	CH. NO.	DRAFTS	CHECKER	ENG. APP.			CDD-12/7/55	JADE	A. J. J.	
TOLERANCES			SCALE:					TYPE & TEMPER	HEAT TREAT. SPEC.	DRAWN	CHECKED	FINAL APPROVAL	
DEC. DIM. ±			MAXIMUM ALLOWABLE TOLERANCES HAVE BEEN DETERMINED AND ANY DEVIATIONS WILL BE CAUSE FOR REJECTION.										
FRAC. DIM. ±			REMOVE ALL BURRS AND SHARP EDGES										
ANGULAR DIM. ±								FINISH & SPEC. NO.		ELEC. DES. APP.	MECH. DES. APP.		
											PL-137		

C/P CAT. NO.	CABLE SIZE (OD)	IMPEDANCE OHMS	A	B
51-516	7/8"	50	1 1/2	5 3/16

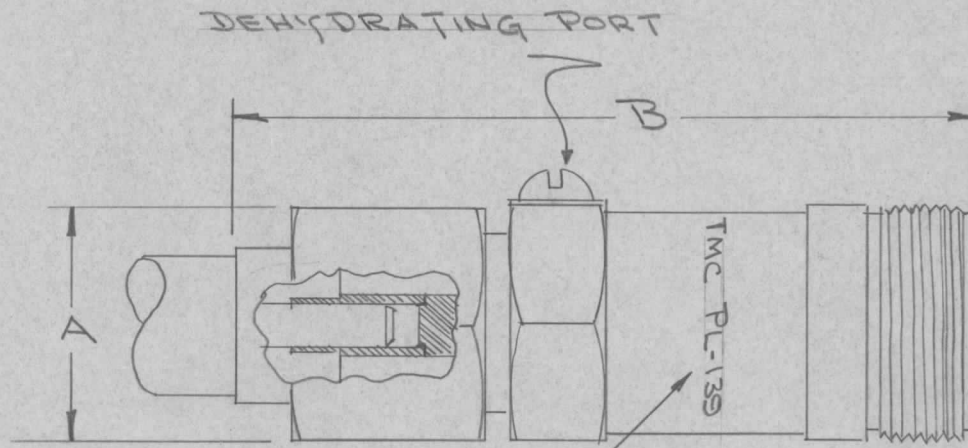
REQ. PER UNIT

USED ON
MODEL ASS'Y. NO. DATE

PL-139

A

STANDARD DRAWING



STAMP AS SHOWN
GOTHIC 1/8 HIGH

NOTE
CONNECTS TO UG-154/U

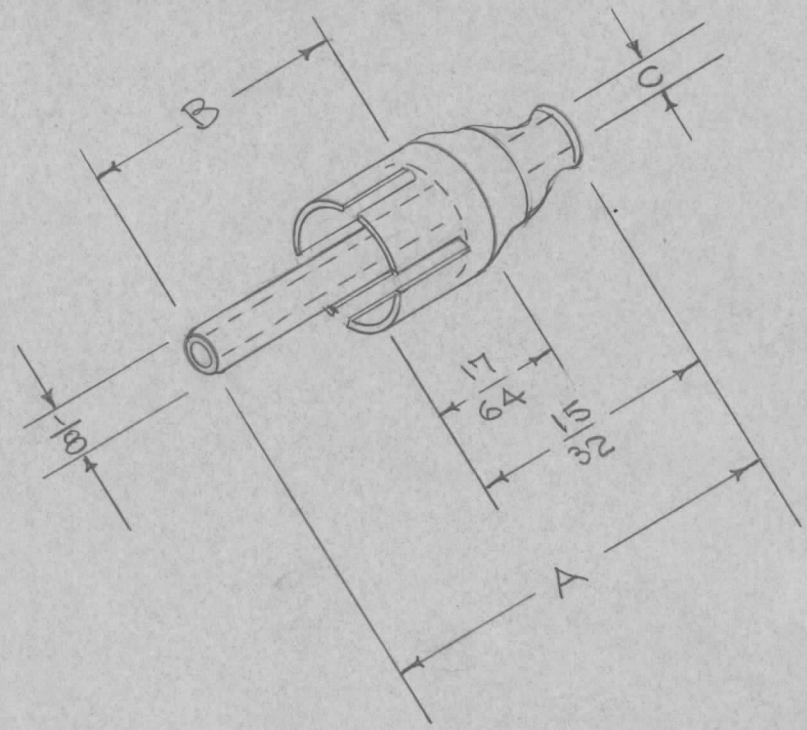
REF: COMMUNICATIONS PRODUCTS CO. (CAT # 255A-ISSUE 3)

REQ. ITEM	PART NO.	DESCRIPTION	SYMBOL
		THE TECHNICAL MATERIEL CORP. MAMARONECK, NEW YORK	
	STOCK SIZE	FLARE TYPE ADAPTER	
	MATERIAL	STYROFLEX TO TYPE LC FEMALE	
A 1	PL-139 was PL-139-1 STAMPING ADDED	12/30/57	1 <i>[Signature]</i> <i>[Signature]</i>
ISSUE ITEM	CHANGED FROM	DATE	CH. NO. DRAFTS CHECKER ENG. APP.
TOLERANCES		SCALE:	
DEC. DIM. ±		MAXIMUM ALLOWABLE TOLERANCES HAVE BEEN DETERMINED AND ANY DEVIATIONS WILL BE CAUSE FOR REJECTION.	
FRAC. DIM. ±		REMOVE ALL BURRS AND SHARP EDGES	
ANGULAR DIM. ±			
	TYPE & TEMPER	HEAT TREAT. SPEC.	DRAWN
			CHECKED
	FINISH & SPEC. NO.	ELEC. DES. APP.	MECH. DES. APP.
		<i>[Signature]</i>	<i>[Signature]</i>
			PL-139
			A

TMC No.	A	B	C
PL-147-1	15/16	11/16	7/8
PL-147-2	13/16	9/16	7/8

REQ. PER UNIT	USED ON		
	MODEL	ASS'Y. NO.	DATE
			PL-147 A

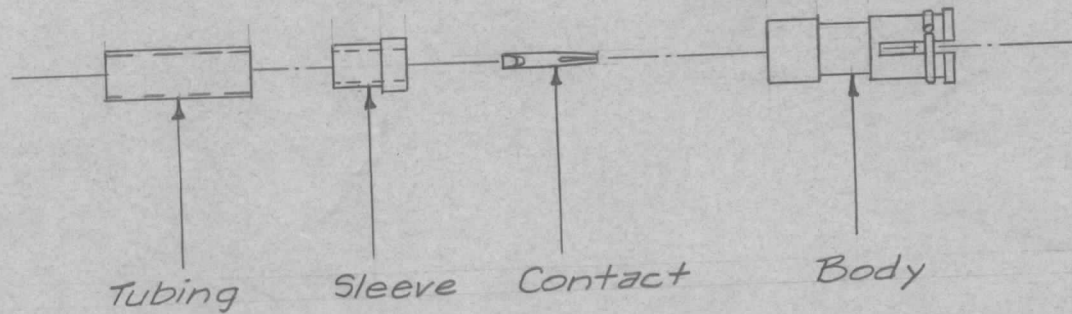
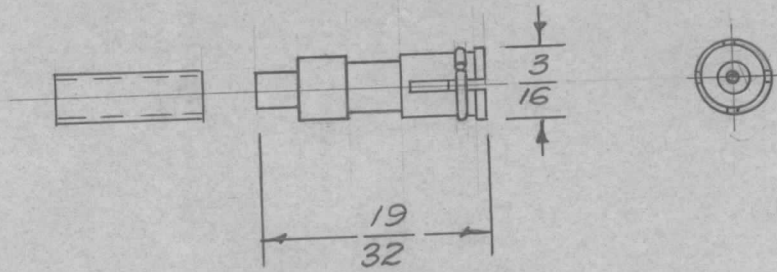
STANDARD DRAWING



MATERIAL:
 SHELL: BRASS CAD. PLATE
 PIN: BRASS NICKEL PLATE
 WASHER: GRAY FIBER

ISSUE	ITEM	CHANGED FROM	DATE	CH. NO.	DRAFTS	CHECKER	ENG. APP.	REQ. ITEM	PART NO.	DESCRIPTION	SYMBOL		
										THE TECHNICAL MATERIEL CORP. MAMARONECK, NEW YORK			
A	4 3 2	PL-147-3,-4,-5,-6 DELE. CAT. NO COLUMN DELETED MAT'L NOTE ADD., REF. DELE TITLE WAS PLUG TIP	8.4.64	12043	WB	@	JC			PLUG, TIP			
TOLERANCES			SCALE:					MATERIAL		DRAWN			
DEC. DIM. ±			MAXIMUM ALLOWABLE TOLERANCES HAVE BEEN DETERMINED AND ANY DEVIATIONS WILL BE CAUSE FOR REJECTION. REMOVE ALL BURRS AND SHARP EDGES					TYPE & TEMPER		HEAT TREAT. SPEC.		DRAWN	
FRAC. DIM. ±								FINISH & SPEC. NO.		ELEC. DES. APP.		MECH. DES. APP.	
ANGULAR DIM. ±									PL-147		A		

REQ. PER UNIT	USED ON			PL-154
	MODEL	ASS'Y. NO.	DATE	

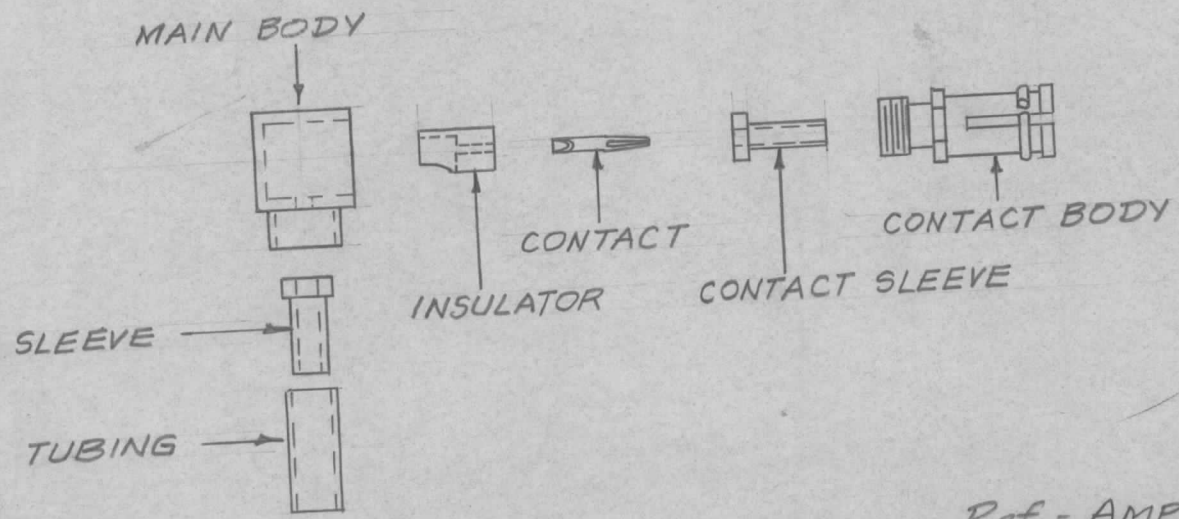
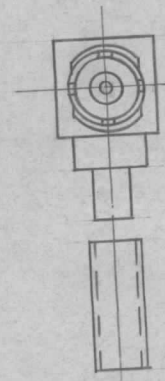
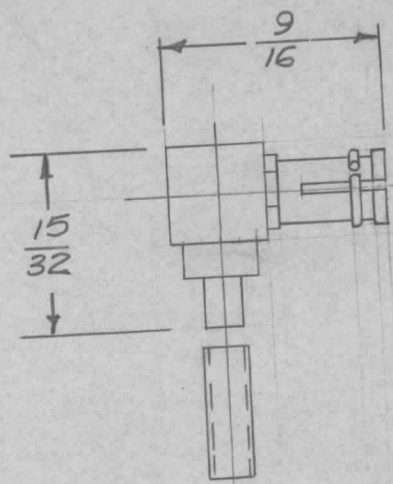


Use With Cable RG-174/U
 Mates with JJ-154
 See S-343 for Connector Ass'y.
 to Cable

Ref- AMPHENOL # 27-1

							REQ.	ITEM	PART NO.	DESCRIPTION	SYMBOL		
										THE TECHNICAL MATERIEL CORP. MAMARONECK. NEW YORK CONNECTOR, PLUG, FEMALE (50 Ω)			
									STOCK SIZE				
									MATERIAL				
ISSUE	ITEM	CHANGED FROM	DATE	CH. NO.	DRAFTS	CHECKER	ENG. APP.			16 7/29 157		 FINAL APPROVAL	
TOLERANCES			SCALE: 2X						TYPE & TEMPER	HEAT TREAT. SPEC.	DRAWN		CHECKED
DEC. DIM. ±			MAXIMUM ALLOWABLE TOLERANCES HAVE BEEN DETERMINED AND ANY DEVIATIONS WILL BE CAUSE FOR REJECTION. REMOVE ALL BURRS AND SHARP EDGES								203	RWB	PL-154
FRAC. DIM. ±												FINISH & SPEC. NO.	
ANGULAR DIM. ±													

REQ. PER UNIT	USED ON		PL-155
	MODEL	ASS'Y. NO.	

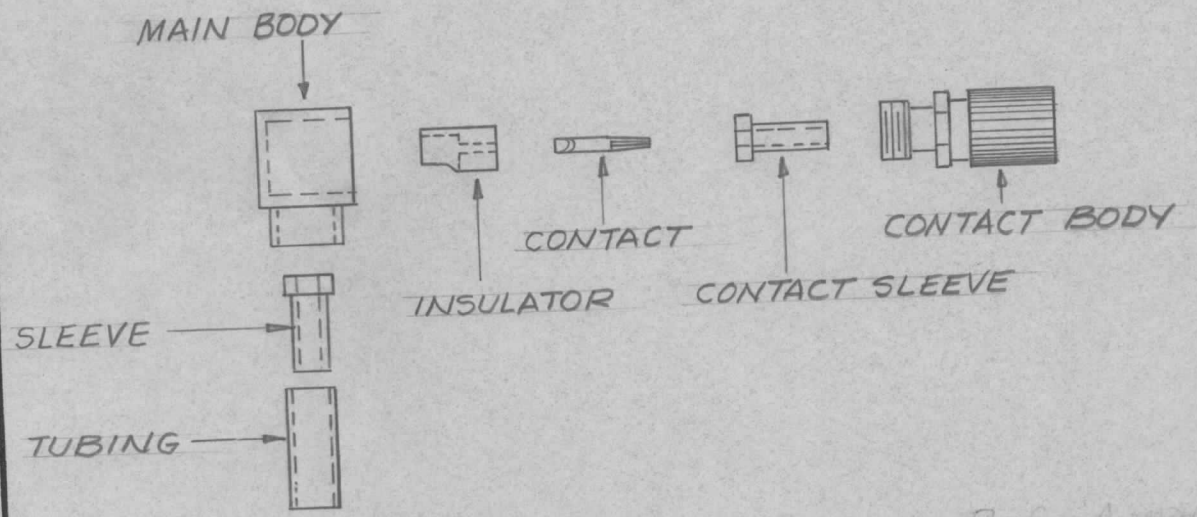
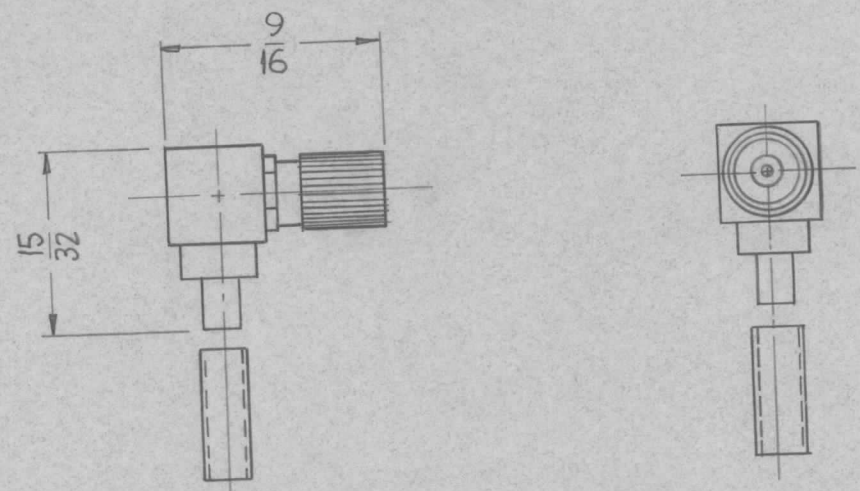


Use with RG-174/U
 Mates with JJ-154.
 See 5-343 for Connector
 Ass'y. to Cable

Ref - AMPHENOL # 27-6

							REQ. ITEM	PART NO.	DESCRIPTION	SYMBOL		
									THE TECHNICAL MATERIEL CORP. MAMARONECK, NEW YORK			
							STOCK SIZE		CONNECTOR, PLUG, FEMALE, ANGLE (50 Ω)			
							MATERIAL		16 7/32/57			
ISSUE	ITEM	CHANGED FROM	DATE	CH. NO.	DRAFTS	CHECKER	ENG. APP.	DRAWN	CHECKED	FINAL APPROVAL		
TOLERANCES		SCALE:					TYPE & TEMPER		HEAT TREAT. SPEC.			
DEC. DIM. ±		MAXIMUM ALLOWABLE TOLERANCES HAVE BEEN DETERMINED AND ANY DEVIATIONS WILL BE CAUSE FOR REJECTION. REMOVE ALL BURRS AND SHARP EDGES					20		RWB			
FRAC. DIM. ±							FINISH & SPEC. NO.		ELEC. DES. APP.		MECH. DES. APP.	
ANGULAR DIM. ±											PL-155	

REQ. PER UNIT	USED ON		DATE	PL-158
	MODEL	ASS'Y. NO.		

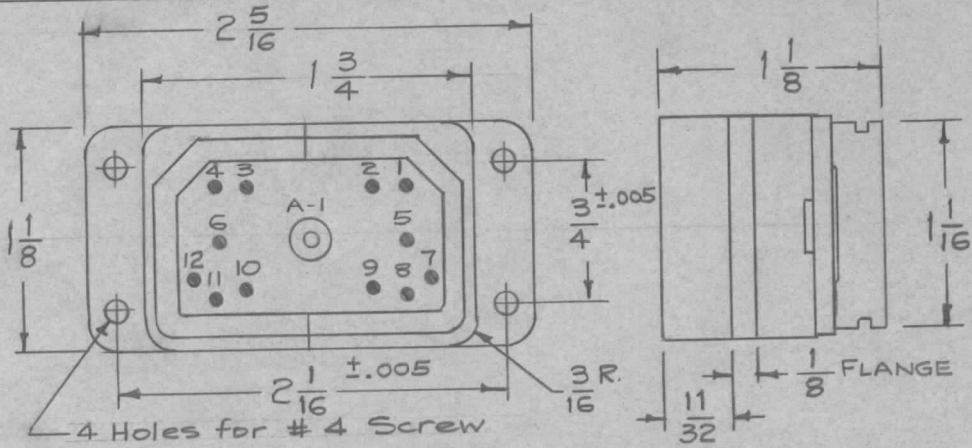


See 5-343 for Connector Ass'y to Cable

Ref. - Appendix #27-26 50Ω

							REQ.	ITEM	PART NO.	DESCRIPTION	SYMBOL	
										THE TECHNICAL MATERIEL CORP. MAMARONECK, NEW YORK		
							STOCK SIZE			CONNECTOR, PLUG, FEMALE ANGLE (50Ω)		
							MATERIAL					
ISSUE	ITEM	CHANGED FROM	DATE	CH. NO.	DRAFTS	CHECKER	ENG. APP.			DRAWN CHECKED		
TOLERANCES			SCALE: S-401-71 (27-26)				TYPE & TEMPER		HEAT TREAT. SPEC.	FINAL APPROVAL		
DEC. DIM. ±			MAXIMUM ALLOWABLE TOLERANCES HAVE BEEN DETERMINED AND ANY DEVIATIONS WILL BE CAUSE FOR REJECTION. REMOVE ALL BURRS AND SHARP EDGES				FINISH & SPEC. NO.		ELEC. DES. APP		MECH. DES. APP	
FRAC. DIM. ±							DRAWN		CHECKED		PL-158	
ANGULAR DIM. ±												

REQ. PER UNIT	USED ON			PL-160
	MODEL	ASS'Y. NO.	DATE	

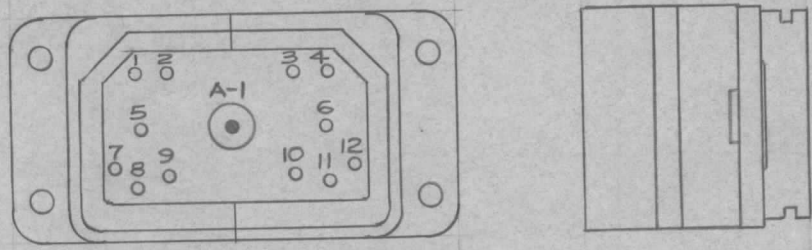


TMC NO. PL-160-P (MFG. DPX-13HV1-34P)

Shell Type Split
 Shell Material Aluminum Alloy Die Cast
 Shell Finish Cadmium Plate
 Contact Material Copper Alloy
 Contact Finish Gold Plate
 Insulation Melamine (XXXP)

PL-160-P

All Dimensions Same as Above



TMC NO. PL-160-S (MFG. DPX-13HV1-34S)

Contact Code
 ● = Pin (male)
 ○ = Socket (female)

Contact Rating
 12- 5amp (#1-12)
 1- HV 5amp (#A-1)

PL-160-S

Note:
 PL-160-P Mates with JJ-158-S
 PL-160-S Mates with JJ-158-P
 Shell Dwg. - PO-150

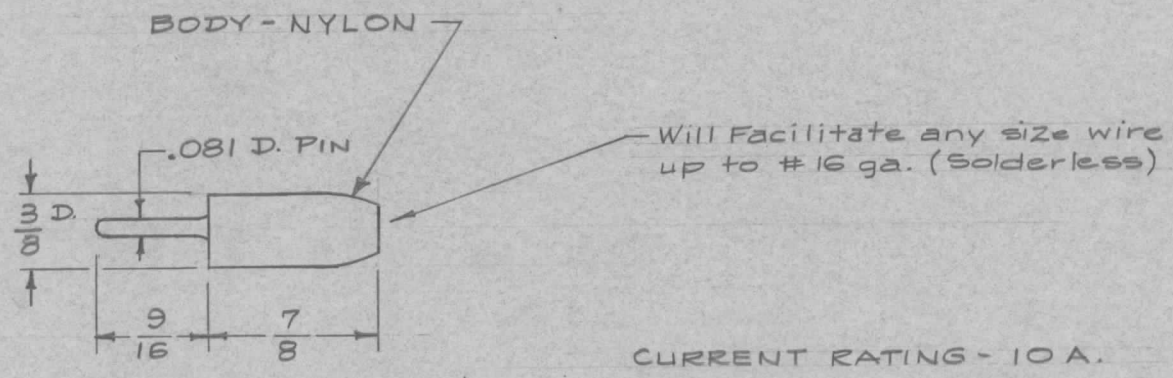
REF- CANNON ELECTRIC CO. TYPE DPX-13HV1-34 ^x

REQ. ITEM	PART NO.	DESCRIPTION	SYMBOL
		THE TECHNICAL MATERIEL CORP. MAMARONECK. NEW YORK	
		CONNECTOR, PLUG	
ISSUE	ITEM	CHANGED FROM	DATE
TOLERANCES		SCALE:	
DEC. DIM. ±		MAXIMUM ALLOWABLE TOLERANCES HAVE BEEN DETERMINED AND ANY DEVIATIONS WILL BE CAUSE FOR REJECTION.	
FRAC. DIM. ± 1/64		REMOVE ALL BURRS AND SHARP EDGES	
ANGULAR DIM. ±			
		16 ⁴ /30/58	A. J. J.
		DRAWN	CHECKED
			FINAL APPROVAL
		FINISH & SPEC. NO.	ELEC. DES. APP. MECH. DES. APP.
			PL-160

TMC NO.	MFG. NO.	BODY COLOR
PL-163-1	105-301	WHITE
PL-163-2	105-302	RED
PL-163-3	105-303	BLACK

REQ. PER UNIT	USED ON		
	1ST MODEL	ASS'Y. NO.	DATE
A-1532/PVC			

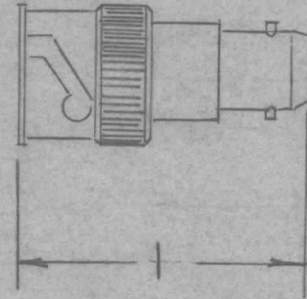
PL-163



REF: E.F. JOHNSON (Mates with TMC Type JJ-114)

ISSUE	ITEM	CHANGED FROM	DATE	CH. NO.	DRAFTS	CHECKER	ENG. APP.	REQ. ITEM	PART NO.	DESCRIPTION	SYMBOL		
								//		THE TECHNICAL MATERIEL CORP. MAMARONECK, NEW YORK	PLUG, TIP		
									STOCK SIZE				
									MATERIAL				
								//	//	16 ⁷ /29/58	Jide		
TOLERANCES								SCALE: FULL					
DEC. DIM. ±								MAXIMUM ALLOWABLE TOLERANCES HAVE BEEN DETERMINED AND ANY DEVIATIONS WILL BE CAUSE FOR REJECTION.					
FRAC. DIM. ±								REMOVE ALL BURRS AND SHARP EDGES					
ANGULAR DIM. ±													
								TYPE & TEMPER		HEAT TREAT. SPEC.	DRAWN	CHECKED	FINAL APPROVAL
								FINISH & SPEC. NO.		ELEC. DES. APP.	MECH. DES. APP.	PL-163	

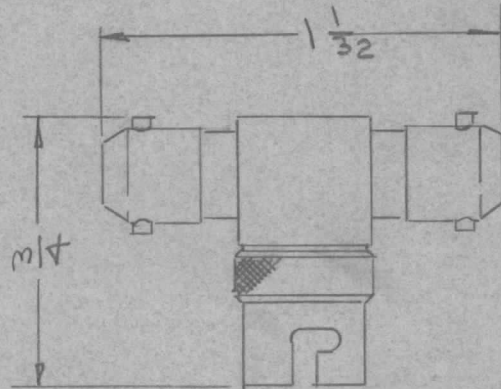
REQ. PER UNIT	USED ON			PL-166
	MODEL	ASS'Y. NO.	DATE	
25	GPT-1DK		1-30-59	



INSULATOR : TEFLON

ISSUE	ITEM	CHANGED FROM	DATE	CH. NO.	DRAFTS	CHECKER	ENG. APP.	REQ.	ITEM	PART NO.	DESCRIPTION	SYMBOL	
											THE TECHNICAL MATERIEL CORP. MAMARONECK, NEW YORK ADAPTER, STRAIGHT MB FEMALE - BNC MALE		
										STOCK SIZE			
										MATERIAL			
TOLERANCES			SCALE: S-401-24(47275)										
DEC. DIM. ±			MAXIMUM ALLOWABLE TOLERANCES HAVE BEEN DETERMINED AND ANY DEVIATIONS WILL BE CAUSE FOR REJECTION. REMOVE ALL BURRS AND SHARP EDGES										
FRAC. DIM. ±								TYPE & TEMPER	HEAT TREAT. SPEC.	DRAWN	CHECKED	FINAL APPROVAL	
ANGULAR DIM. ±													
			FINISH & SPEC. NO.				ELEC. DES. APP	MECH. DES. APP			PL-166		

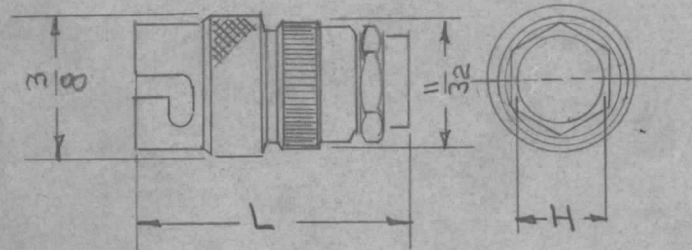
REQ. PER UNIT	USED ON			PL-167
	MODEL	ASS'Y. NO.	DATE	
1	GPT-10K			



NOTES:
 INSULATOR: KEL-F
 ONE MALE, TWO FEMALE

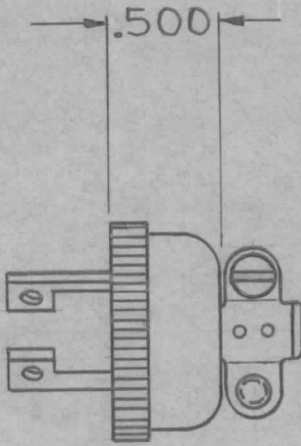
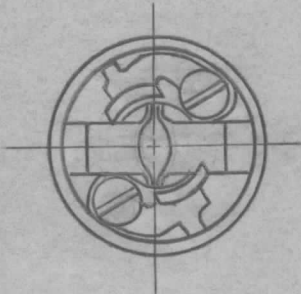
ISSUE	ITEM	CHANGED FROM	DATE	CH. NO.	DRAFTS	CHECKER	ENG. APP.	REQ.	ITEM	PART NO.	DESCRIPTION	SYMBOL	
											THE TECHNICAL MATERIEL CORP. MAMARONECK, NEW YORK ADAPTER, TEE		
										STOCK SIZE			
										MATERIAL			
TOLERANCES			SCALE: 5-401-24(47325)										
DEC. DIM. ± FRAC. DIM. ± ANGULAR DIM. ±			MAXIMUM ALLOWABLE TOLERANCES HAVE BEEN DETERMINED AND ANY DEVIATIONS WILL BE CAUSE FOR REJECTION. REMOVE ALL BURRS AND SHARP EDGES										
							TYPE & TEMPER	HEATTREAT. SPEC.	DRAWN	CHECKED	FINAL APPROVAL		
							FINISH & SPEC. NO.	ELEC. DES. APP.	MECH. DES. APP.				

TMC PART NO	CAT. NO	INSULATOR	DIMENSION		FOR USE WITH CABLE RG-10#	REMARKS	USED ON			
			L	H			REQ. PER UNIT	MODEL	ASS'Y. NO.	DATE
PL-168-1	45000	NYLON	3/4	.203	58	SOLDERLESS CONTACT				PL-168
-2	45025	NYLON	27/32	.258	59, 62	"				
-3	45050	"	3/4	.203	58, A, B, C	SOLDER TYPE CONTACT				
-4	45075	"	3/4	.177	.122					
-5	45100	"	3/4	.082	.070 TO .080	JACKET CLAMP				
-6	45125	"	3/4	.203	.120	"				
-7	45175	"	3/4	.094	.090	"				
-8	45275	KEL-F	3/4	.129	.120	"				
-9	45325	"	13/16	.194	.141					
-10	45425	"	3/4	.094	.090	JACKET CLAMP				
-11	45475	"	25/32	.082	.070 TO .080	"				
-12	45525	"	3/4	.203	58, A, B, C					
-13	45550	NYLON	27/32	.258	59, 62	SOLDER TYPE CONTACT				
-14	45600	KEL-F	3/4	.177	.122					
-15	45650	NYLON	3/4	.105	.174	JACKET CLAMP				
PL-168-16	45700	KEL-F	3/4	.144	.140					



REQ.	ITEM	PART NO.	DESCRIPTION				SYMBOL
			THE TECHNICAL MATERIEL CORP.				
			MAMARONECK, NEW YORK				
			STOCK SIZE				
			PLUG, CONNECTOR				
			MATERIAL				
ISSUE	ITEM	CHANGED FROM	DATE	CH. NO.	DRAFTS	CHECKER	ENG. APP.
TOLERANCES			SCALE: S-401-24				
DEC. DIM. ±			MAXIMUM ALLOWABLE TOLERANCES HAVE BEEN DETERMINED AND ANY DEVIATIONS WILL BE CAUSE FOR REJECTION. REMOVE ALL BURRS AND SHARP EDGES				
FRAC. DIM. ±							
ANGULAR DIM. ±							
TYPE & TEMPER		HEATTREAT. SPEC.		DRAWN		CHECKED	
				J.D. 15		2-1-59	
FINISH & SPEC. NO.		ELEC. DES. APP		MECH. DES. APP		FINAL APPROVAL	
						AMB	
						PL-168	

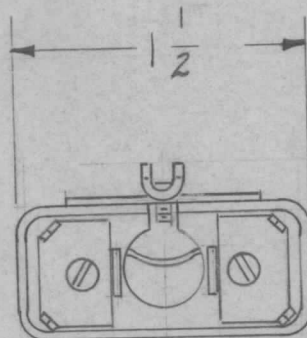
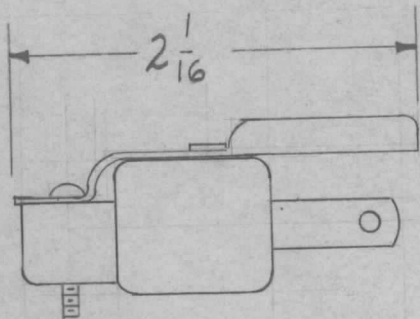
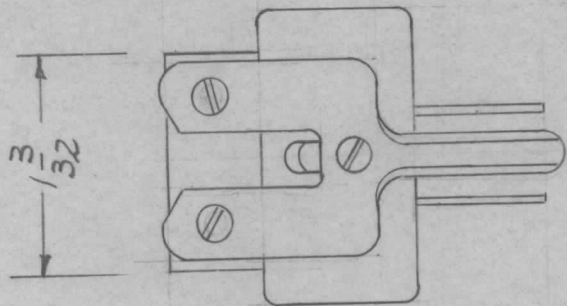
REQ. PER. UNIT	USED ON			PL-171
	MODEL	ASS'Y. NO.	DATE	
1	PLG	PL-171	4-2-59	



REF ~ HUBBEL #7465

ISSUE	ITEM	CHANGED FROM	DATE	CH. NO.	DRAFTS	CHECKER	ENG. APP.	REQ.	ITEM	PART NO.	DESCRIPTION	SYMBOL
											THE TECHNICAL MATERIEL CORP. MAMARONECK, NEW YORK	
											PLUG, CONNECTOR MALE	
											J.C. BIELE	
											DRAWN	CHECKED
											8G.	
											ELEC. DES. APP	MECH. DES. APP
												PL-171

REQ. PER. UNIT	USED ON			PL-172	A
	MODEL	ASS'Y. NO.	DATE		
1	GPT 101C		4/9/59		



NOT TO BE RELEASED
W/O AUTHORIZATION

REDRAWN

For the following reasons:

1. TMC part drawing no. PL-172 was in direct conflict w/ Penta Lab part# PL-172.
2. Therefore, to avoid conflict w/ Penta Lab part nos. & TMC part nos. the dwg # PL-172 was changed to PL-218.

98074

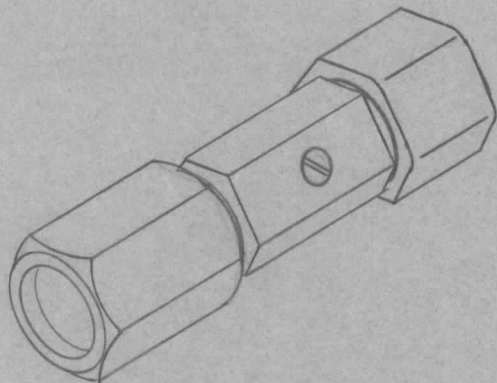
REF. ARM # UP-121-M (GRAY BAR)

3 PRONG POLARIZED PLUG WITH REMOVEABLE
GROUND CONNECTION.

								REQ.	ITEM	PART NO.	DESCRIPTION		SYMBOL				
										THE TECHNICAL MATERIEL CORP. MAMARONECK, NEW YORK							
										POLARIZED AC PLUG							
A	1	REDRAWN NOTE ADDED	11-30-61	5955	RLU												
ISSUE	ITEM	CHANGED FROM	DATE	CH. NO.	DRAFTS	CHECKER	ENG. APP.										
TOLERANCES			SCALE:														
DEC. DIM. ±			MAXIMUM ALLOWABLE TOLERANCES HAVE BEEN DETERMINED AND ANY DEVIATIONS WILL BE CAUSE FOR REJECTION. REMOVE ALL BURRS AND SHARP EDGES					TYPE & TEMPER		HEATTREAT.SPEC.	DRAWN	CHECKED	FINAL APPROVAL				
AC. DIM. ±								FINISH & SPEC. NO.		ELEC. DES. APP.	MECH. DES. APP.					PL-172	A
ANGULAR DIM. ±																	

TMC PART NO.	PRODELIN PART NO.	CABLE SIZE
PL-1	77-875	7/8 IN.
-2	77-1625	1 5/8 IN.
-3	77-3125	3 1/8 IN.

REQ. PER UNIT	USED ON		
	MODEL	ASS'Y. NO.	DATE
			PL-173



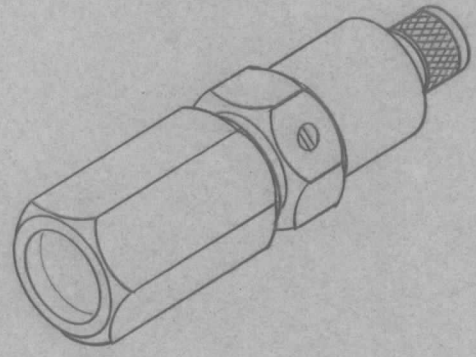
REF: PRODELIN, INC., KEARNEY, N.J.

REQ.	ITEM	PART NO.	DESCRIPTION	SYMBOL
			THE TECHNICAL MATERIEL CORP. MAMARONECK, NEW YORK	
			CONNECTOR, ADAPTER, SPIR-O-LINE TO TYPE LC MALE Connects to UG-352/U	
			MJT 4-17-59	
			CHECKED	
			FINAL APPROVAL	
			PL-173	∅
			ELEC. DES. APP	
			MECH. DES. APP	

ORIGINAL RELEASE 8/26/69
 CHANGED FROM
 DATE CH. NO. DRAFTS CHECKER ENG. APP.
 TOLERANCES SCALE:
 DEC. DIM. ±
 FRAC. DIM. ±
 ANGULAR DIM. ±
 MAXIMUM ALLOWABLE TOLERANCES HAVE BEEN DETERMINED AND ANY DEVIATIONS WILL BE CAUSE FOR REJECTION: REMOVE ALL BURRS AND SHARP EDGES

TMC PART No.	PRODELIN PART No.	CABLE SIZE	
PL-	-1	76-375	3/8 IN.
	-2	76-500	1/2 IN.
	-3	76-875	7/8 IN.
	-4	76-1625	1 5/8 IN.
	-5	76-3125	3 1/8 IN.

REQ. PER UNIT	USED ON		
	MODEL	ASS'Y. NO.	DATE
			PL-174

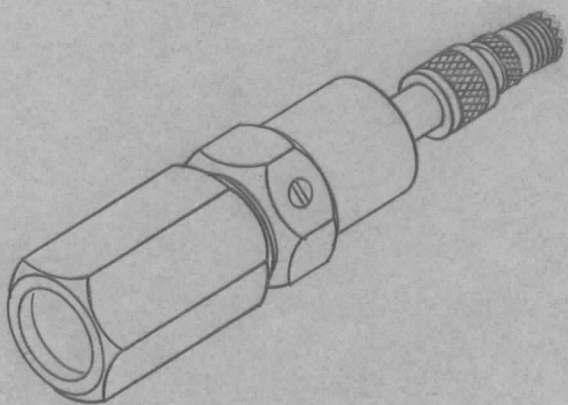


REF: PRODELIN, INC., KEARNY, N.J.

REQ.	ITEM	PART NO.	DESCRIPTION	SYMBOL
			THE TECHNICAL MATERIEL CORP. MAMARONECK, NEW YORK	
			CONNECTOR, ADAPTER, SPIR-O-LINE TO TYPE N MALE Connects to VG-23/U	
			MJT 4-17-59	
			JCB	SEW 8/26/69
			DRAWN	CHECKED
				FINAL APPROVAL
				PL-174
				Ø

TMC PART No.	PRODELIN PART No.	CABLE SIZE
PL- -1	84-375	3/8 IN.
-2	84-500	1/2 IN.
-3	84-875	7/8 IN.
-4	84-1625	1 5/8 IN.

REQ. PER UNIT	USED ON		
	MODEL	ASS'Y. NO.	DATE
			PL-175

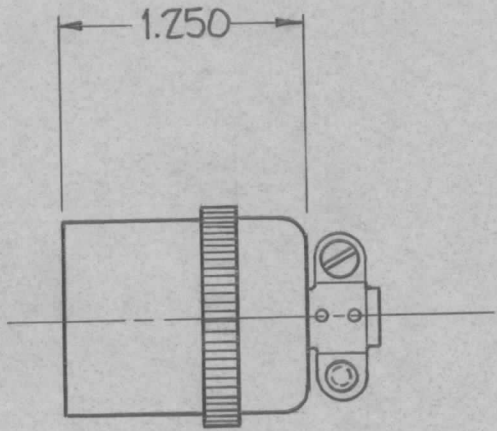
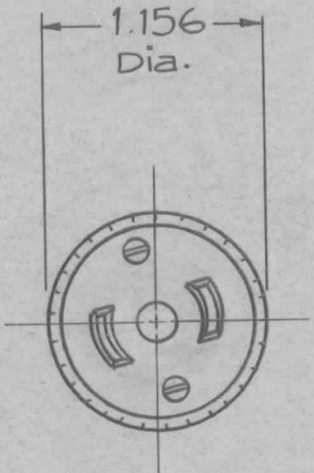


REF: PRODELIN, INC., KEARNY, N.J.

REQ.	ITEM	PART NO.	DESCRIPTION	SYMBOL
			THE TECHNICAL MATERIEL CORP. MAMARONECK, NEW YORK	
			CONNECTOR, ADAPTER, SPIR-O-LINE TO PL-258 Connects to PL-259	
			MJT 4-17-59	
			JCB	
			SAM 8/26/69	
			FINAL APPROVAL	
			PL-175	∅
			ELEC. DES. APP	
			MECH. DES. APP	
			FINISH & SPEC. NO.	

ORIGINAL RELEASE 8/26/69 CW
 DATE CH. NO. DRAFTS CHECKER ENG. APP.
 TOLERANCES SCALE:
 DEC. DIM. ±
 FRAC. DIM. ±
 ANGULAR DIM. ±
 MAXIMUM ALLOWABLE TOLERANCES HAVE BEEN DETERMINED AND ANY DEVIATIONS WILL BE CAUSE FOR REJECTION:
 REMOVE ALL BURRS AND SHARP EDGES

REQ. PER. UNIT	USED ON			PL-176
	MODEL	ASS'Y. NO.	DATE	
1	GPT 10K		5-13-59	

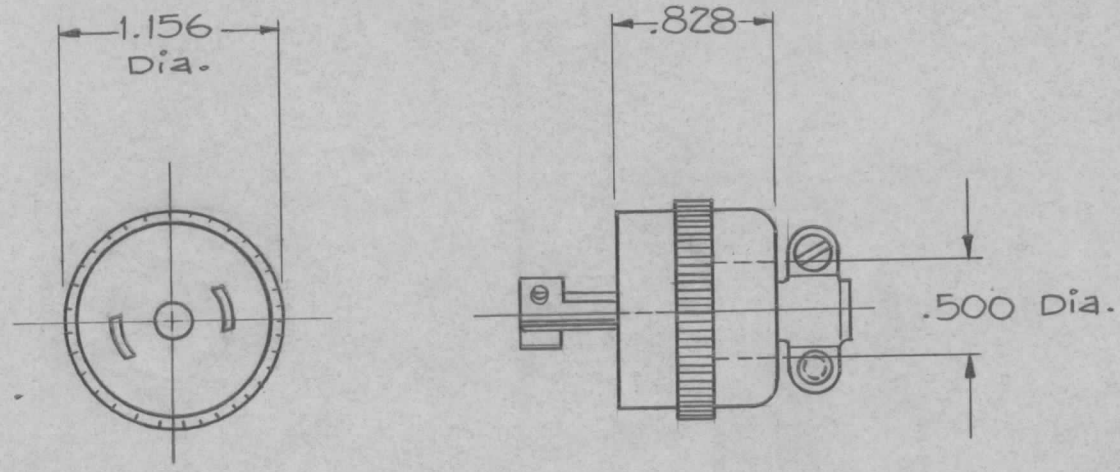


SPECIFICATIONS:
 MIDGET SIZE
 BLACK BAKE LITE
 POLARIZED
 10 AMPS, 250 VOLTS
 15 AMPS, 125 VOLTS

REF. JUBBEL D.C. NO. 7484

REQ.	ITEM	PART NO.	DESCRIPTION			SYMBOL
			THE TECHNICAL MATERIEL CORP. MAMARONECK, NEW YORK			
			PLUG, TWIST LOCK FEMALE (POLARIZED)			
			J.C. BIELE			
			DRAWN			
			CHECKED			
			FINAL APPROVAL			
			ELEC. DES. APP			
			MECH. DES. APP			
			PL-176			

REQ. PER UNIT	USED ON			PL-177
	MODEL	ASS'Y. NO.	DATE	
	RAK-22		5-13-59	

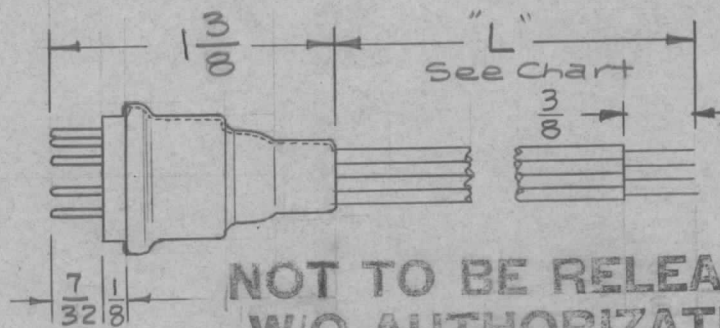
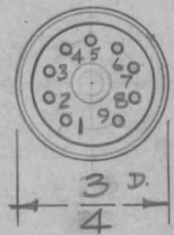


SPECIFICATION:
 MIDGET SIZE
 BLACK BAKELITE
 POLARIZED
 10 AMPS, 250 VOLTS
 15 AMPS, 125 VOLTS

REF - HUBBEL NO - NO 7482

							REQ.	ITEM	PART NO.	DESCRIPTION	SYMBOL			
										THE TECHNICAL MATERIEL CORP.				
										MAMARONECK, NEW YORK				
										PLUG, TWIST LOCK				
										MALE (POLARIZED)				
ISSUE	ITEM	CHANGED FROM	DATE	CH. NO.	DRAFTS	CHECKER	ENG. APP.			J.C. BIELE				
TOLERANCES			SCALE: 5-401-43 (7485)								<i>file</i>	<i>AMB</i>		
DEC. DIM. ±			MAXIMUM ALLOWABLE TOLERANCES HAVE BEEN DETERMINED AND ANY DEVIATIONS WILL BE CAUSE FOR REJECTION. REMOVE ALL BURRS AND SHARP EDGES				TYPE & TEMPER	HEATTREAT. SPEC.	DRAWN	CHECKED	FINAL APPROVAL			
FRAC. DIM. ±									<i>G.G.</i>				PL-177	
ANGULAR DIM. ±											ELEC. DES. APP	MECH. DES. APP		

TMC PART NO.	MFG. CAT. NO.	NUMBER OF LEADS	CONNECT WIRE COLOR SHOWN TO PIN NO.-									WIRE LENGTH "L"
			Pin 1	Pin 2	Pin 3	Pin 4	Pin 5	Pin 6	Pin 7	Pin 8	Pin 9	
PL-184-1	909	NONE	NC	NC	NC	NC	NC	NC	NC	NC	NC	0"
PL-184-2	909C M.C.D.	8	Black	Yellow	Green	White	Red	Orange	Brown	Grey	N.C.	5"
PL-184-3												
PL-184-4												
PL-184-5												



NOTE - NC = No Connection

All Leads will be be Std. 22 Ga. Stranded Insulated Wire (Mil Type MWCZZ(7)U -- Free End will be stripped & tinned 3/8"

NOT TO BE RELEASED W/O AUTHORIZATION

REDRAWN

- SEE PL-219 -

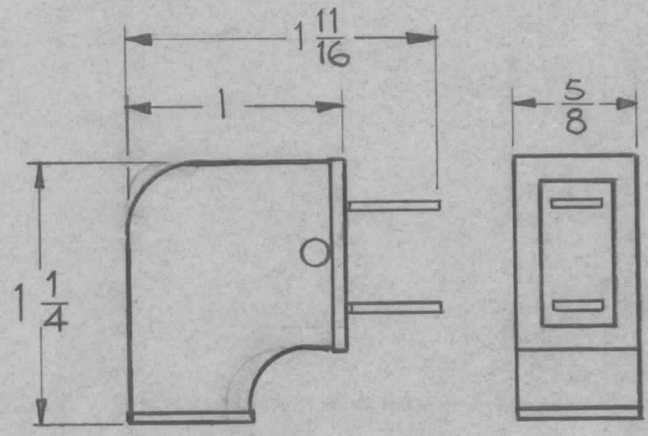
For the following reasons:

1. TMC part drawing no. PL-184 was in direct conflict w/ Penta Lab part # PL-184.
2. Therefore, to avoid conflict w/ Penta Lab part no. & TMC part nos; the TMC dwg # PL-184 was changed to PL-219.

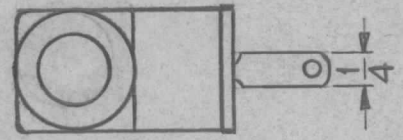
REF - ALDEN PRODUCTS

REQ. UNIT	ITEM	PART NO.	DESCRIPTION			SYMBOL
B	1	REDRAWN NOTE ADDED	THE TECHNICAL MATERIEL CORP.			B
A	1	Wire Colors Chgd (-2)	MAMARONECK, NEW YORK			B
ISSUE ITEM			PLUG, 9 Pin Miniature			
CHANGED FROM			MATERIAL			
DATE			DRAWN			
CH. NO.			CHECKED			
DRAFTS			FINAL APPROVAL			
CHECKER			TYPE & TEMPER			
ENG. APP.			HEAT TREAT. SPEC.			
TOLERANCES			FINISH & SPEC. NO.			
SCALE: 5401-163			ELEC. DES. APP			
DEC. DIM. ±			MECH. DES. APP			
FRAC. DIM. ±			ELEC. DES. APP			
ANGULAR DIM. ±			MECH. DES. APP			

REQ. PER. UNIT	USED ON			PL-185
	MODEL	ASS'Y. NO.	DATE	
	CON		1-12-60	

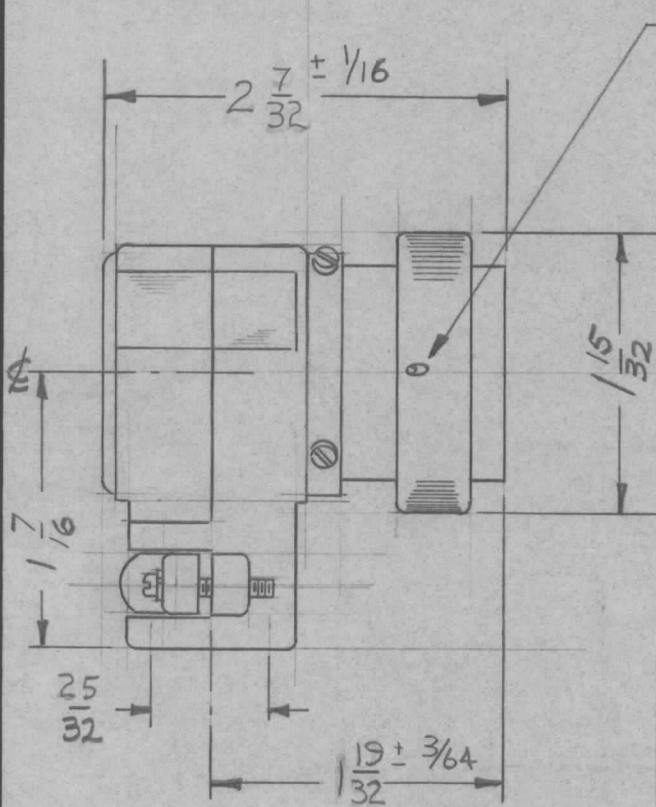


NOTE:
ALL DIMENSIONS FOR
REFERANCE ONLY

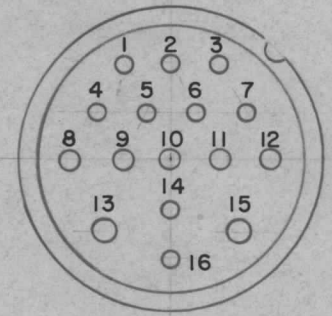
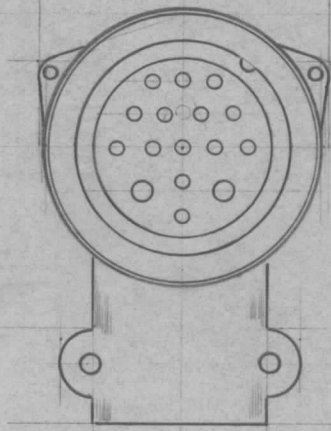


REQ.	ITEM	PART NO.	DESCRIPTION			SYMBOL	
			THE TECHNICAL MATERIEL CORP. MAMARONECK, NEW YORK				
			STOCK SIZE				
			Rubber				
			MATERIAL				
ISSUE	ITEM	CHANGED FROM	DATE	CH. NO.	DRAFTS	CHECKER	ENG. APP.
TOLERANCES			SCALE:				
DEC. DIM. ±			MAXIMUM ALLOWABLE TOLERANCES HAVE BEEN DETERMINED AND ANY DEVIATIONS WILL BE CAUSE FOR REJECTION. REMOVE ALL BURRS AND SHARP EDGES				
FRAC. DIM. ±							
ANGULAR DIM. ±							
			TYPE & TEMPER	HEAT TREAT. SPEC.	DRAWN	CHECKED	FINAL APPROVAL
			FINISH & SPEC. NO.	ELEC. DES. APP	MECH. DES. APP	PL-185	

REQ. PER UNIT	USED ON			PL-186	B
	MODEL	ASS'Y. NO.	DATE		
3	RAK 11		4-15-60		



COUPLING NUT DRILLED AT 4 POINTS FOR SAFETY WIRE



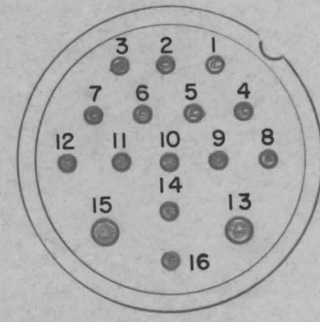
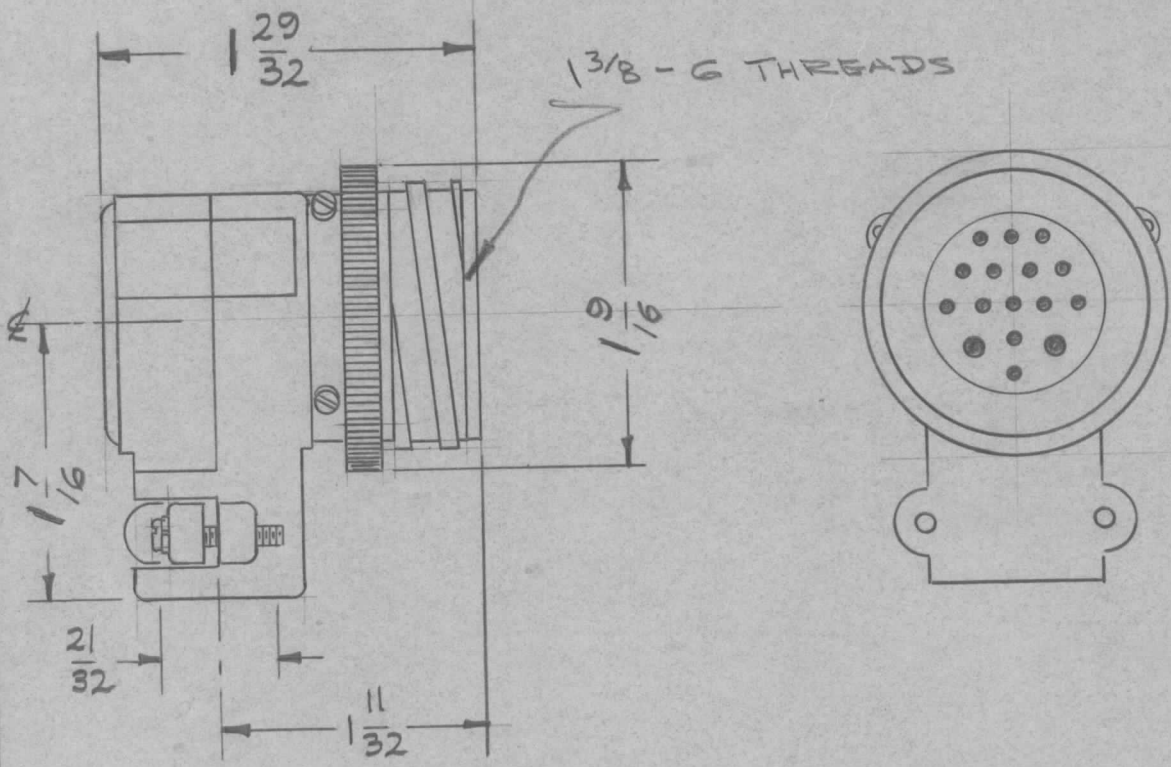
INSERT ARRANGEMENT

SHELL ALUMINUM ALLOY CAD. PLATE
 TEST VOLT - 1300 VRMS - 60 CPS
 CONTACTS - 14 - #16 WIRE
 1-12 INCL + 14 & 16
 2 - #10 WIRE 13 & 15
 CONTACT CURRENT RATING
 #10 - 30 AMP
 #16 - 10 AMP
 CONTACTS - BRASS SILVER PLATED

REF: JI-183 - 17 - TING

REQ.	ITEM	PART NO.	DESCRIPTION				SYMBOL		
			THE TECHNICAL MATERIEL CORP.						
			MAMARONECK, NEW YORK						
			CONNECTOR, PLUG FEMALE						
			16 CONTACTS						
B			DIM. WERE	2 3/32, 2 1/32, 1 17/32	7-2766	16647	RME	CB	JC
A	1		MFG. PART NO. WAS	SK-C16-23C-5/8	11-4-60	3400	grf		
ISSUE	ITEM	CHANGED FROM	DATE	CH. NO.	DRAFTS	CHECKER	ENG. APP.		
TOLERANCES			SCALE: S401-91 (SK-C16-23C-3/4)						
DEC. DIM. ±			MAXIMUM ALLOWABLE TOLERANCES HAVE BEEN DETERMINED AND ANY DEVIATIONS WILL BE CAUSE FOR REJECTION. REMOVE ALL BURRS AND SHARP EDGES						
FRAC. DIM. ±									
ANGULAR DIM. ±									
TYPE & TEMPER		HEAT TREAT. SPEC.		DRAWN		CHECKED		FINAL APPROVAL	
				LORILLO 4-15-60		[Signature]		[Signature]	
FINISH & SPEC. NO.				ELEC. DES. APP		MECH. DES. APP		PL-186 B	

REQ. PER UNIT	USED ON		PL-187	A
	MODEL	ASS'Y. NO.		
3	RAK 11		4-15-60	



INSERT ARRANGEMENT

SHELL - ALUMINUM ALLOY, CADMIUM PL
 TEST VOLT - 1300VRMS 60CPS
 CONTACTS - 14 - #16 WIRE, 1-12 INCL. 14 & 16
 2 - #10 WIRES 13 + 15
 CONTACT CURRENT RATING #10 - 30AMP
 #16 - 10AMP
 CONTACTS - BRASS, SILVER PLATED

REF: JJ-184

ISSUE	ITEM	CHANGED FROM	DATE	CH. NO.	DRAFTS	CHECKER	ENG. APP.	REQ.	ITEM	PART NO.	DESCRIPTION	SYMBOL	
											THE TECHNICAL MATERIEL CORP. MAMARONECK, NEW YORK		
											CONNECTOR, MALE		
											16 CONTACTS		
A	1	MFG. PART NO. WAS RSK-C16-24C-5/B	11-4-60	3400	2/F								
TOLERANCES			SCALE: S-401-91 (RSK-C16-24C-3/4)					TYPE & TEMPER		HEAT TREAT. SPEC.	DRAWN	CHECKED	FINAL APPROVAL
DEC. DIM. ± FRAC. DIM. ± ANGULAR DIM. ±			MAXIMUM ALLOWABLE TOLERANCES HAVE BEEN DETERMINED AND ANY DEVIATIONS WILL BE CAUSE FOR REJECTION. REMOVE ALL BURRS AND SHARP EDGES					FINISH & SPEC. NO.		ELEC. DES. APP.	MECH. DES. APP.		PL-187
												A	

CONTACTS.	MFG #
4 PIN	UNAVAIL
4 SOCKET	126-215 W/HOOD ONLY
5 PIN	126-217
5 SOCKET	126-223
7 PIN	126-195
7 SOCKET	126-196
9 PIN	126-220
9 SOCKET	126-222

TMC PART #	REQ. PER UNIT	USED ON		
		MODEL	ASS'Y. NO.	DATE
PL-189-9-5	2	CHG		10-6-60

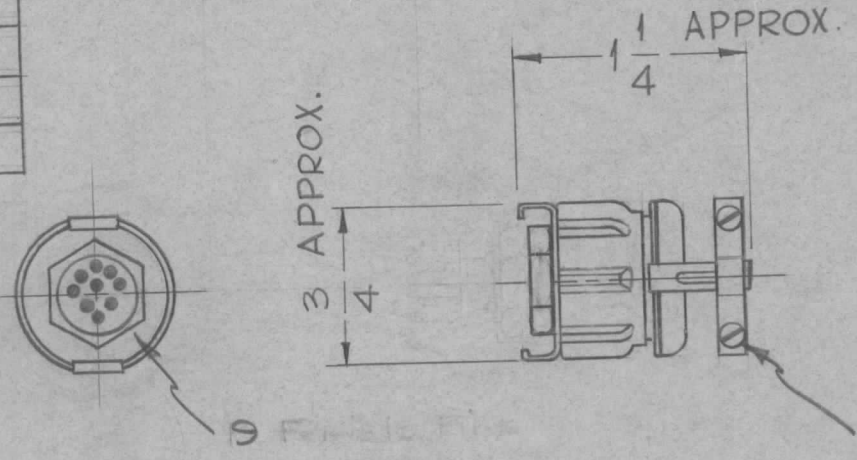
PL-189

ELECTRICAL SPEC.

VOLTAGE BREAKDOWN:
 2000V RMS 60CPS AT SEA LEVEL
 700V RMS 60CPS AT 50,000 FT. ALTITUDE.

CURRENT RATING: 7.5 AMPS.

CONTACTS - Silver Base Plated,
 Gold Finish



Hardware - Brass, Nickel Plate

TMC PART # TO BE IN THE FOLLOWING FORM:

PL-189 - 9 - P

BASIC TMC PART NO.	NO OF CONTACTS AVAILABLE IN 4, 5, 7 & 9.	POLARITY P - MALE (PIN) S - FEMALE (SOCKET)
--------------------	--	---

NOTE - MATES WITH TMC NO. JJ-193.

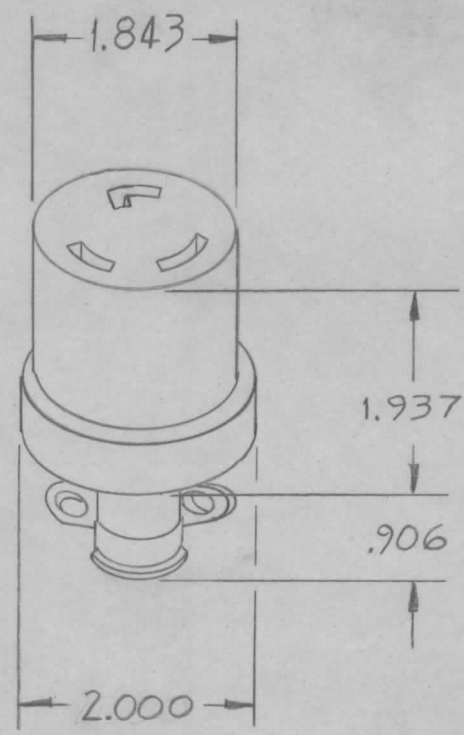
							REQ.	ITEM	PART NO.	DESCRIPTION	SYMBOL
										THE TECHNICAL MATERIEL CORP. MAMARONECK, NEW YORK	
										CONNECTOR, PLUG, MINATURE HEXAGON	
										J.C. Biele	
										SCALE: S401-71 (126 255)	
										MAXIMUM ALLOWABLE TOLERANCES HAVE BEEN DETERMINED AND ANY DEVIATIONS WILL BE CAUSE FOR REJECTION. REMOVE ALL BURRS AND SHARP EDGES	
										TYPE & TEMPER	
										HEATTREAT. SPEC.	
										FINISH & SPEC. NO.	
										DRAWN	
										CHECKED	
										ELEC. DES. APP	
										MECH. DES. APP	
											PL-189

DEC. DIM. ±
 FRAC. DIM. ± 1/64
 ANGULAR DIM. ±

REQ. PER. UNIT	USED ON			PL-190	B
	MODEL	ASS'Y. NO.	DATE		
	RAK-9				

TYPE	DESCRIPTION
NG	NOT GROUNDED
WG	WITH GROUND SHUNT

PL-190 NG
 TMC NO. TYPE



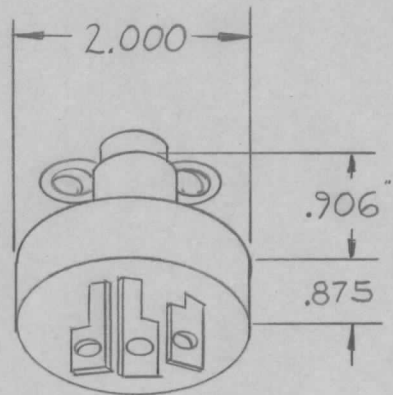
30 A. 250V AC OR DC
 ADJUSTABLE CORD GRIP
 CORD DIA. -.625 TO 1.000

IF DESIRED WITH GROUND SHUNT ADD LETTER "G" TO CAT. NO.

REF. DWG. PL-191 & JJ-194
 REF: HARVEY HUBBELL INC. CAT NO. 3333

REQ.	ITEM	PART NO.	DESCRIPTION				SYMBOL	
			THE TECHNICAL MATERIEL CORP.					
			MAMARONECK, NEW YORK					
			CONNECTOR, 3 WIRE					
			LOCKING TYPE POLARIZED					
B	1		DIRECTION OF KEY REVERSED	11/2/65	CC	MVJ	QC	
A	1		CAT. NO. WAS 7313	11-22-60	3538	DOM	gob	SPM
ISSUE	ITEM	CHANGED FROM	DATE	CH. NO.	DRAFTS	CHECKER	ENG. APP.	
TOLERANCES			SCALE (DO NOT SCALE)					
DEC. DIM. ±			MAXIMUM ALLOWABLE TOLERANCES HAVE BEEN DETERMINED AND ANY DEVIATIONS WILL BE CAUSE FOR REJECTION. REMOVE ALL BURRS AND SHARP EDGES					
FRAC. DIM. ± 1/64								
ANGULAR DIM. ±								
FINISH & SPEC. NO.		ELEC. DES. APP	MECH. DES. APP	DRAWN		CHECKED	FINAL APPROVAL	
				SPM			PL-190	B

REQ. PER. UNIT	USED ON			PL-191	A
	MODEL	ASS'Y. NO.	DATE		



30 AMP 250 V. AC. OR D.C.
 ADJUSTABLE CORD GRIP
 CORD DIA. .625 TO 1.000

IF DESIRED GROUNDED . ADD
 LETTER "G" TO CAT. NO.

TYPE	DESCRIPTION
NG	NOT GROUNDED
WG	WITH GROUND

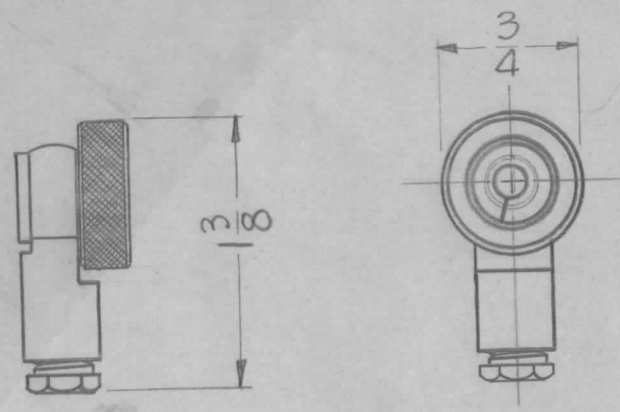
PL-191 NG
 TMC NO. TYPE

REF. DWG. PL-190
 REF: HARVEY HUBBELL INC. CAT No 3331

							REQ.	ITEM	PART NO.	DESCRIPTION			SYMBOL		
							STOCK SIZE			THE TECHNICAL MATERIEL CORP. MAMARONECK, NEW YORK					
							MATERIAL			CONNECTOR, 3 WIRE LOCKING TYPE, POLARIZED					
TOLERANCES							SCALE (DO NOT SCALE)			ALL	FILE	OMP			
DEC. DIM. ± FRAC. DIM. ± 1/64 ANGULAR DIM. ±							MAXIMUM ALLOWABLE TOLERANCES HAVE BEEN DETERMINED AND ANY DEVIATIONS WILL BE CAUSE FOR REJECTION. REMOVE ALL BURRS AND SHARP EDGES			TYPE & TEMPER	HEAT TREAT. SPEC.	DRAWN	CHECKED	FINAL APPROVAL	
							FINISH & SPEC. NO.			ELEC. DES. APP	MECH. DES. APP	PL-191 A			

REQ. PER. UNIT	USED ON		
	MODEL	ASS'Y. NO.	DATE
2	ACU	CA-577	11-4-60
2	GPT-40K	CA-577	11-4-60

PL-192 A



NOTE - THIS CONNECTOR USED FOR SPARE PARTS ONLY. IT IS NORMALLY SUPPLIED WITH COUPLER, TMC #DC-101 (2 PER)

REF: BIRD ELECTRONIC CORP. (#75076)

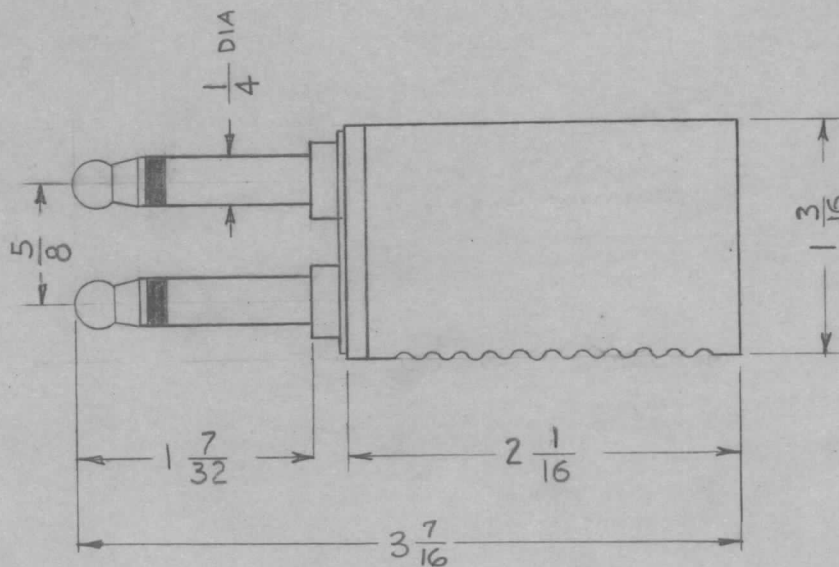
				REQ.	ITEM	PART NO.	DESCRIPTION			SYMBOL
							THE TECHNICAL MATERIEL CORP.			
							MAMARONECK, NEW YORK			
							PLUG, ANGLE TYPE			
							MATERIAL			
							DRAWN			
							CHECKED			
							FINAL APPROVAL			
							ELEC. DES. APP			
							MECH. DES. APP			
							PL-192			A

ISSUE	ITEM	CHANGED FROM	DATE	CH. NO.	DRAFTS	CHECKER	ENG. APP.
A	2	NOTE ADDED REF WAS P/O DC-101	11/28/60	3608	JMM	JCB	DB

TOLERANCES		SCALE:
DEC. DIM. ±		MAXIMUM ALLOWABLE TOLERANCES HAVE BEEN DETERMINED AND ANY DEVIATIONS WILL BE CAUSE FOR REJECTION.
FRAC. DIM. ±		REMOVE ALL BURRS AND SHARP EDGES
ANGULAR DIM. ±		

REQ. PER UNIT	USED ON			PL-194	A
	MODEL	ASSY. NO.	DATE		
			2-1-61		

INSULATION TEST (BETWEEN PARTS) 500V RMS
 FRAME — DIE CAST
 SHELL — BLACK PHENOLIC
 POLARITY — SHELL NOTCHED FOR POLARITY
 TYPE — THREE CONDUCTOR (2 TIP CONDUCTORS,
 PLUS SLEEVE CONNECTION COMMON
 TO BOTH SLEEVES)



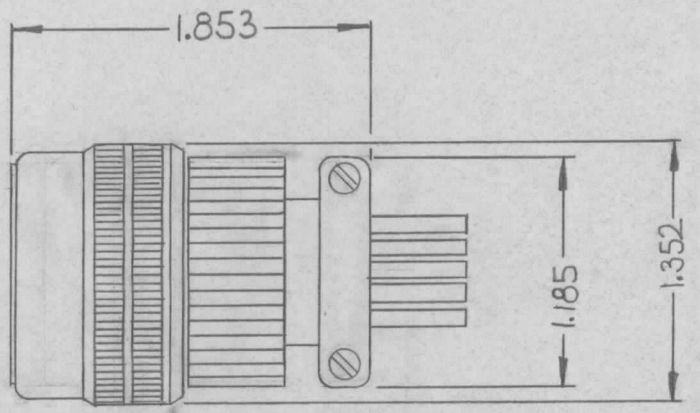
NOTE - For cable Ass'y complete w/ this
 plug at each end, See CA-130

AUDIO DEVEL. CO. # PJ-1

REQ.	ITEM	PART NO.	DESCRIPTION			SYMBOL		
			THE TECHNICAL MATERIEL CORP.					
			MAMARONECK, NEW YORK					
			PLUG TELEPHONE					
A	2	DIM. 3-7/16 ADDED	1-9-63	7995	<i>Phl</i>			
	1	DIM 2 1/16 WAS 3-7/16						
ISSUE	ITEM	CHANGED FROM	DATE	CH. NO.	DRAFTS	CHECKER	ENG. APP.	
TOLERANCES			SCALE:					
DEC. DIM. ±			MAXIMUM ALLOWABLE TOLERANCES HAVE					
FRAC. DIM. ±			BEEN DETERMINED AND ANY DEVIATIONS					
ANGULAR DIM. ±			WILL BE CAUSE FOR REJECTION.					
			REMOVE ALL BURRS AND SHARP EDGES					
TYPE & TEMPER		HEAT TREAT. SPEC.	DRAWN		CHECKED		FINAL APPROVAL	
			<i>Schuis</i>		<i>JDe</i>		<i>SFM</i>	
FINISH & SPEC. NO.		ELEC. DES. APP	MECH. DES. APP		PL-194			A

TMC P/N	MFGR P/N
PL198-1	67-06C18-64S
PL198-2	67-06C18-64P

REQ. PER UNIT	USED ON			PL198	Ø
	MODEL	ASS'Y. NO.	DATE		
	GPR-92		5.13.66		



REQ.	ITEM	PART NO.	DESCRIPTION				SYMBOL
			THE TECHNICAL MATERIEL CORP. MAMARONECK. NEW YORK				
			STOCK SIZE				
			CONNECTOR, PLUG				
			MATERIAL				
Ø	ORIGINAL RELEASE	8/26/69		W			
SYM	DESCRIPTION	DATE	CH. NO.	DRAFTS	CHECKER	ENG. APP.	
UNLESS OTHERWISE SPECIFIED DIMENSIONS ARE IN INCHES AND INCLUDE CHEMICALLY APPLIED OR PLATED FINISHES		SCALE	1/1				
DECIMALS .X ± .05 .XX ± .01 .XXX ± .005		FRACTIONS ± 1/64 ANGLES ± 0° 30'		CODE		SA01-71	
TOLERANCES							
FINISH & SPEC. NO.		ELEC. DES. APP.	MECH. DES. APP.		PL198 Ø		