

PL-156 A

SPECIFICATIONS

SERIES ~ QDS  
 NO OF CONTACTS ~ ONE  
 TYPE OF CONTRACT ~ MALE  
 DIELECTRIC ~ TEFLON  
ELECTRICAL DATA  
 MAX. PEAK OPER. VOLT. ~ 5000V  
 FREQ. LIMIT ~ 10,000 MCS  
 NOMINAL IMPEDANCE ~ 50Ω

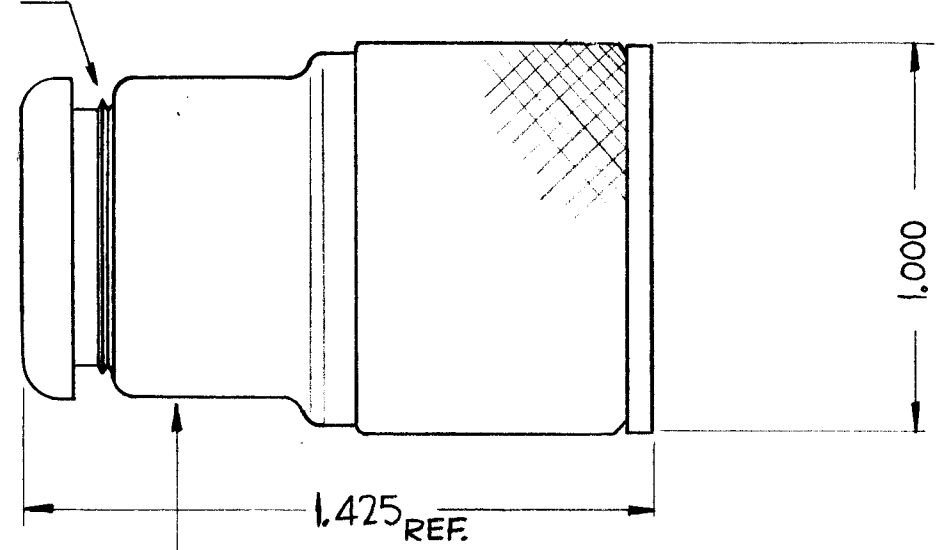
CABLE ACCOMODATIONS

TYPE ~ RG-58/U  
 MAX. O.D. ~  
 IMPEDANCE ~

MATERIAL

EXTERNAL PARTS ~ BRASS  
 CONTACT ~ BRASS  
 GASKET ~ SILICONE, RUBBER  
FINISH  
 EXT. PARTS ~ SILVER PLATE & RHODIUM FLASH

THREAD SIZE



STAMP TMC PL-156

NOTICE TO PERSONS RECEIVING THIS DRAWING

THE TECHNICAL MATERIEL CORPORATION claims proprietary right in its drawings and information. This drawing is issued in confidence for engineering information only and may not be reproduced, loaned to manufacturers, or otherwise disseminated without permission from THE TECHNICAL MATERIEL CORPORATION. This is the responsibility of the recipient.

NOTE ~ USE TMC SPEC. S-345/QDS FOR CABLE ASS'Y.

A	Redrawn & Specs added	5/29/61				
SYM	DESCRIPTION	DATE	CH. NO.	DRAFTS	CHECKER	ENG. APP.

UNLESS OTHERWISE SPECIFIED:  
 DIMENSIONS ARE IN INCHES  
 TOLERANCES ON FRACTIONS ± 1/64 DECIMALS ± .005 ANGLES ± 1/2°  
 SCALE: S-401-70 (8805)  
 MAXIMUM ALLOWABLE TOLERANCES HAVE BEEN DETERMINED AND ANY DEVIATIONS WILL BE CAUSE FOR REJECTION.  
 REMOVE ALL BURRS AND SHARP EDGES

REQ. PER UNIT	MODEL	SECTION	ASS'Y. NO.	DATE
				5-18-61
USED ON				

REQ. ITEM	PART NO.	DESCRIPTION	SYMBOL
		THE TECHNICAL MATERIEL CORP. MAMARONECK, NEW YORK	
		CONNECTOR, PLUG	
		SERIES QDS	
		D. J. Man H. O. J. M.	
		TYPE & TEMPER	HEAT TREAT. SPEC.
		DRAWN	CHECKER
			FINAL APPROVAL
			PL-156 A
		FINISH & SPEC. NO.	ELEC. DES. APP. MECH. DES. APP.