

D
PL-149

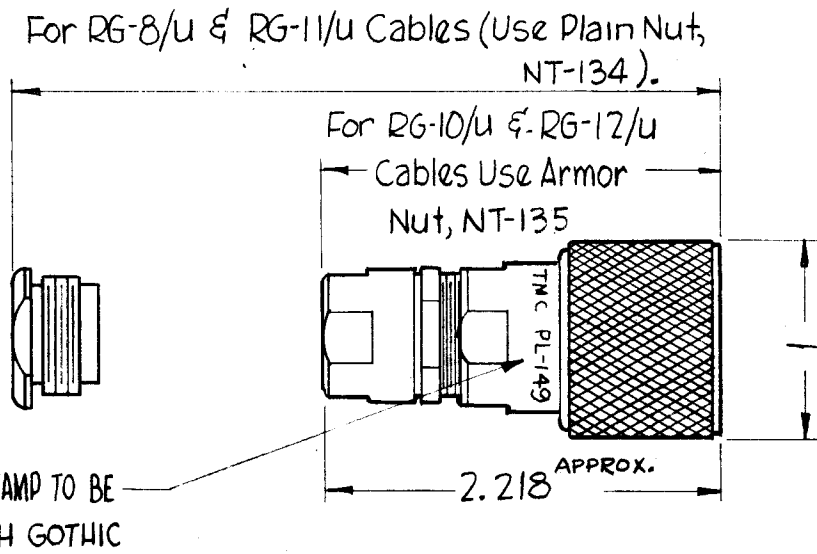
SPECIFICATIONS

SERIES~QDS
 NO OF CONTACTS~ONE(1)
 TYPE OF CONTACT~MALE
 DIELECTRIC~TEFLON
ELECTRICAL DATA
 MAX. PEAK VOLT.~5000V
 FREQ. LIMIT~10,000 MC
 NOM. IMPEDANCE~50Ω
CABLE ACCOMODATIONS
 TYPE~RG-8/u, RG-11/u, RG-10/u & RG-12/u
MATERIAL
 EXTERNAL PARTS~BRASS
 CONTACT~BRASS
FINISH
 EXT. PARTS~SILVER PLATE & RHODIUM FLASH
 CONTACT~SILVER PLATE & GOLD FLASH
 HARDWARE SUPPLIED BY MFGR: NT-134 &/OR NT-135 (SEE NOTE 2)

NOTICE TO PERSONS RECEIVING THIS DRAWING

THE TECHNICAL MATERIEL CORPORATION claims proprietary right in the material disclosed hereon. This drawing is issued in confidence for engineering information only and may not be reproduced or used to manufacture anything shown hereon without permission from THE TECHNICAL MATERIEL CORPORATION to the user. This drawing is loaned for mutual assistance and is subject to recall at any time.

Property of:
 THE TECHNICAL MATERIEL CORPORATION
 MAMARONECK, NEW YORK



NOTES

- 1- USE TMC SPEC. S-345 FOR CABLE ASSEMBLY.
- 2- WHEN SHIPPED BY TMC AS A LOOSE ITEM OR PIECE PART, SUPPLY BOTH ARMOR NUT (NT-135) AND PLAIN NUT(NT-134).

PL-149 IS A DIRECT PLACEMENT FOR PL-145

SYM	DESCRIPTION	DATE	CH. NO.	DRAFTS	CHECKER	ENG. APP.
D	SEE EMN *10846 FOR CHG.	2-5-64	10846	A.M	TR.	[Signature]
C	TMC PART NO CHART ADDED - ON SPEC. HDW. SECTION CLARIFIED	9-13-63	9919	G.DL	[Signature]	[Signature]
B	NT-135 WAS NT-133, NOTE ADDED	7-21-62	7364	[Signature]	[Signature]	[Signature]
A	Revised and Redrawn from (1) Size Drawing	5/16/61	#	[Signature]	[Signature]	[Signature]

UNLESS OTHERWISE SPECIFIED:
 DIMENSIONS ARE IN INCHES
 TOLERANCES ON FRACTIONS ± 1/64 DECIMALS ± .005 ANGLES ± 1/2°

SCALE: 5-40170 (3023)
 MAXIMUM ALLOWABLE TOLERANCES HAVE BEEN DETERMINED AND ANY DEVIATIONS WILL BE CAUSE FOR REJECTION. REMOVE ALL BURRS AND SHARP EDGES

REQ. PER UNIT	MODEL	SECTION	ASS'Y. NO.	DATE
				5/16/61

REQ. ITEM	PART NO.	DESCRIPTION	SYMBOL
		THE TECHNICAL MATERIEL CORP. MAMARONECK, NEW YORK	
		CONNECTOR, PLUG	
		UNIVERSAL, QDS	
		[Signatures]	
		TYPE & TEMPER HEAT TREAT. SPEC. DRAWN CHECKER FINAL APPROVAL	
		FINISH & SPEC. NO. ELEC. DES. APP. MECH. DES. APP.	PL-149 D